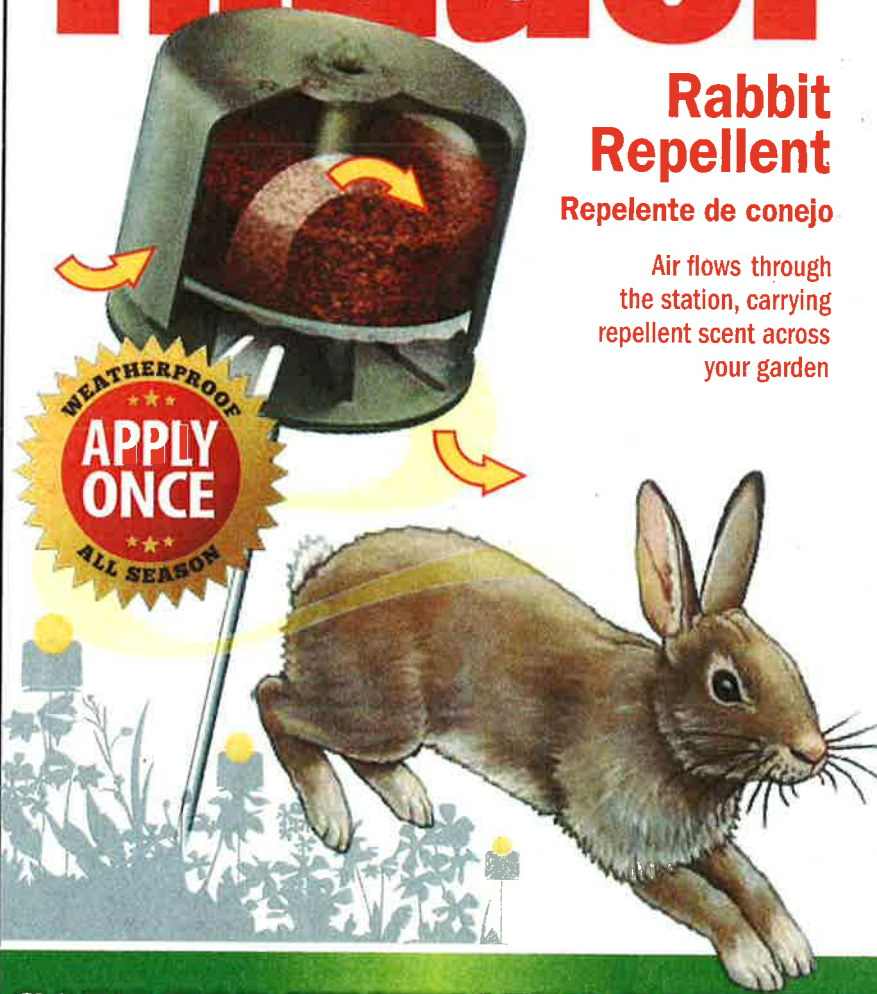


Critter Ridder®

Rabbit Repellent

Repelente de conejo

Air flows through the station, carrying repellent scent across your garden



SAFE FOR VEGETABLE GARDENS

SATISFACTION GUARANTEED

ACTIVE INGREDIENTS/INGREDIENTES ACTIVOS:
 Dried Blood/Sangre seca: 100%
 TOTAL 100%

KEEP OUT OF REACH OF CHILDREN
CAUTION Avoid eye contact. Wash from skin with soap and water to avoid irritation.

3 Ready-to-use repellent stations and stakes

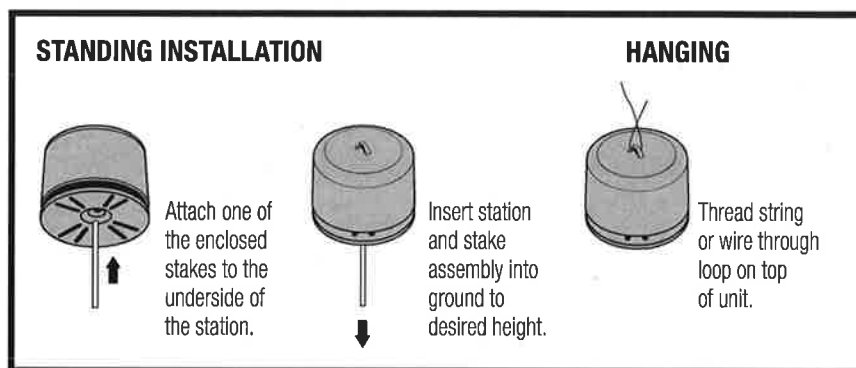
NET CONTENTS/CONTENIDO NETO:
 2.12 OZ (60G) / 0.71 OZ (20G)

INSTRUCTIONS

By following the instructions below, this product will remain effective throughout the entire growing season without further maintenance. The all-natural, scent-based repellent triggers the rabbit's flight response to danger. This box includes three (3) Critter Ridder® Rabbit Repellent stations and three (3) wire stakes.

LOCATION: Units should be installed near the top level of the plant or vegetation they are protecting to allow the scent to work effectively. Please adjust units installed on plants that grow significantly during the season to maximize the repellent capability.

INSTALLATION: For most applications, straighten the stake (included) and insert it into the bottom of the unit. Make sure to firmly push until the stake is fully seated (you should be able to see the tip of the stake in the hole on the top of the unit).



The stakes are designed to fit snugly so that wind and animals cannot easily disrupt them. Insert the other end of the stake in the ground and press down to achieve desired height.

For shorter applications, like pots or low-lying plants, you can cut the stake to a shorter length with a simple pair of wire cutters.

You may also use string, wire, or even Christmas ornament hooks (not included) to hang the units in fencing, hanging pots, shrubs, and trees using the plastic loop at the top of each unit.

PLEASE NOTE: THE FILTER SIDE OF THE UNIT MUST BE DIRECTLY FACING THE GROUND ONCE INSTALLED!

SPACING/COVERAGE: Units should be placed 4 to 8 feet apart in any direction within your flower or vegetable gardens. Units may be placed closer together to increase effectiveness as necessary. For potted flowers / plants, simply place one unit in each pot.

Please avoid placing the units in the direct spray of a lawn sprinkler head as the spray may damage or disrupt the unit.

PETS AND RACCOONS: This product contains a non-toxic blood product that some dogs, cats and raccoons may find attractive.

This product works throughout the entire growing season – Spring, Summer and Fall. However, the effectiveness of scent-based repellents can be diminished in temperatures below 40 degrees F.

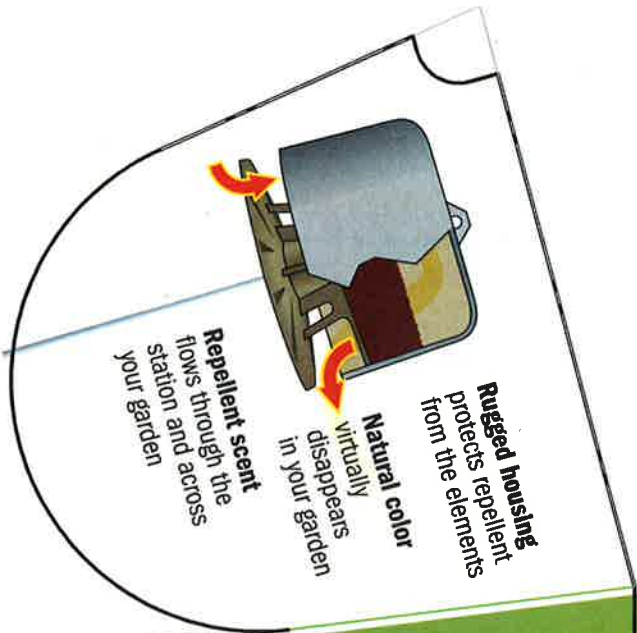
STORAGE: Store product in original container, in a cool, dry place.

DISPOSAL: Place container in trash receptacle or dispose of in a sanitary landfill. Burning is not a legal form of disposal.

This product has not been registered by the U.S. EPA. Woodstream Corporation represents that this product qualifies for exemption from registration under the Federal Insecticide, Fungicide, and Rodenticide Act.

To provide comments or obtain additional information, please go to our website at www.havahart.com or call us at 1-800-800-1819.

Critter Ridder® Rabbit Repellent is manufactured by:
Woodstream Corporation, 69 North Locust Street, Lititz, PA 17543 • 1-800-800-1819.

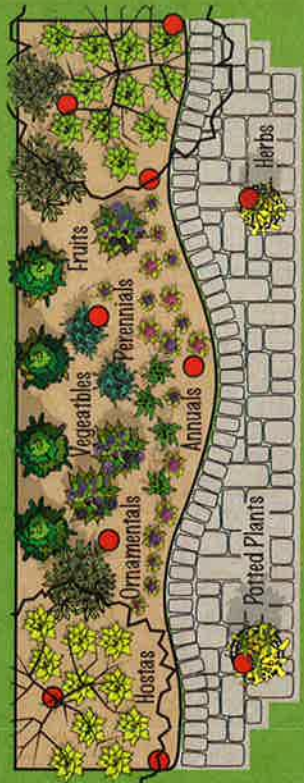


Critter Ridder®

Rabbit Repellent
Repelente de conejo



Place or hang
repellent stations
4 - 8 ft. apart.



HAVAHAART®

Woodstream
© Copyright 2015 Woodstream
Corporation. CRITTER RIDDER®
is a registered trademark of
Woodstream Corporation.

Manufactured for:
Woodstream Corporation
69 North Locust Street, Lititz, PA 17543
1-800-800-1819

HAVAHAART®

 HAVAHAART®

How It Works

- When it rains, the patented weatherproof station protects the repellent and keeps on working
- No repellent contact with fruits or vegetables
- Perfect for use in vegetable gardens right through harvest
- Protects sprouting plants and new growth all season
- No offensive odors to humans

Critter Ridder Repellent Stations can cover an 8' x 24" garden or place them anywhere rabbits like to forage.