



ZERO-BITE[®]
NATURAL INSECT REPELLENT
CONCENTRATE

TO CONTROL:

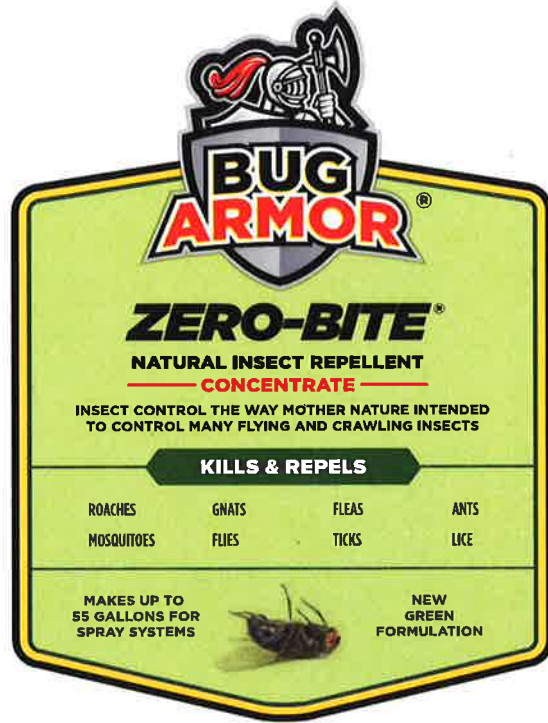
ROACHES	GNATS	FLEAS	ANTS
MOSQUITOES	FLIES	TICKS	LICE

Our Zero-Bite[®] line is also available in Ready To Use sizes:
 4oz, 8oz, 32oz and 1 gallon.

Manufactured Exclusively for:
PYRANHA, INC.
 6602 Cunningham Road
 Houston, Texas 77041
 Phone: 800-291-2966
 Fax: 832-467-3864
 www.pyranhainc.com
 Rev.: 12152015



www.pyranhainc.com



INSECT CONTROL THE WAY MOTHER NATURE INTENDED TO CONTROL MANY FLYING AND CRAWLING INSECTS

KILLS & REPELS

ROACHES	GNATS	FLEAS	ANTS
MOSQUITOES	FLIES	TICKS	LICE

MAKES UP TO 55 GALLONS FOR SPRAY SYSTEMS

NEW GREEN FORMULATION

ACTIVE INGREDIENTS:

Sodium Lauryl Sulfate.....	7.00%
Geraniol.....	3.00%
Clove Oil.....	2.00%
Peppermint Oil.....	1.00%
INERT INGREDIENTS:*	87.00%
TOTAL:	100.00%

*Water, Glycerin
 *NATURAL INGREDIENTS: GERANIOL, CLOVE OIL & PEPPERMINT OIL

KEEP OUT OF REACH OF CHILDREN

CAUTION

SEE BACK/SIDE PANELS FOR ADDITIONAL PRECAUTIONARY STATEMENTS

NET CONTENTS: 1 GALLON (3.8 L)

PRECAUTIONARY STATEMENTS

May cause eye and skin irritation. Avoid contact with skin, eyes or clothing. Wear gloves, protective eyewear and clothing when handling concentrated product. Wash hands thoroughly with soap and water after handling. Avoid contamination of food and foodstuff. Spills may cause a slip and fall hazard - clean up spills immediately.

FIRST AID

Have the product container or label with you when calling a poison control center or doctor, or going for treatment. For additional information (including health concerns, medical emergencies or pesticide incidents), you may call 1-800-222-1222, twenty-four (24) hours per day, seven (7) days per week.

IF SWALLOWED:	<ul style="list-style-type: none"> • Call a poison control center or doctor immediately for treatment advice. • Have person sip a glass of water if able to swallow. • Do not induce vomiting unless told to do so by a poison control center or doctor. • Do not give anything by mouth to an unconscious person.
IF IN EYES:	<ul style="list-style-type: none"> • Hold eye open and rinse slowly and gently with water for 15-20 minutes. • Remove contact lenses, if present, after the first 5 minutes, then continue rinsing eye. • Call a poison control center or doctor for treatment advice.
IF ON SKIN OR CLOTHING:	<ul style="list-style-type: none"> • Take off contaminated clothing. • Rinse skin immediately with plenty of water for 15-20 minutes. • Call a poison control center or doctor for treatment advice.

ENVIRONMENTAL HAZARDS

Do not apply directly to water. Use with care when applying adjacent to any body of water. Applying this product in calm weather when rain is not predicted for the next 24 hours will help ensure that wind or rain does not blow or wash the product off the treatment area. This product may be toxic to bees. Avoid application when bees are actively foraging in the treatment area.



ZERO-BITE[®]

NATURAL INSECT REPELLENT
CONCENTRATE

PROVEN EFFECTIVE!

The goodness of Geraniol, Clove oil and Peppermint oil brings you a safe natural insect fighter.

DIRECTIONS FOR USE:

Read entire label. Use only in accordance with label directions and precautions.

For use in and around (but not limited to): homes, barns, patios, and lawn areas.

Cover or remove food. Cover food processing surfaces during treatment or thoroughly clean before use.

SHAKE WELL.

"This product has not been registered by the U.S. Environmental Protection Agency. Pyranha Inc. represents that this product qualifies for exemption from registration under the Federal Insecticide, Fungicide and Rodenticide Act."

FOR USE IN MISTING SYSTEMS- AS A SPACE SPRAY:

Dilute at the rate of 1 part of this product to 40-54 parts water (1 gallon of the concentrate can be added to 54 gallons of water). Use less water for more severe infestations. Use more water for maintenance applications. Add the entire contents of the 1 gallon concentrate to a third the amount of water. Triple rinse the container with water, pouring the rinse solution into the system container and agitate to mix. Slowly add the remaining water to the system container, as foaming may occur. Mix thoroughly after achieving the desired dilution.

Set nozzles to deliver 1.5 ounces of diluted product per minute. Locate nozzles to cover a maximum of 1000 cubic feet of space per nozzle. Set timer to operate in accordance with equipment directions.

FOR USE IN HANDHELD SPRAYERS- AS A PREMISE SPRAY:

For fleas, dilute at the rate of 1 part of this product to 2 parts water. For all other listed pests, dilute at the rate of 1 part of this product to 9 parts water and apply at a rate of 6 to 24 fl. oz. per 1000 sq. ft. of area using higher amounts for severe infestation. Thoroughly spray diluted product onto infested areas, bedding, resting quarters, nearby cracks and crevices, along and behind baseboards, moldings, window and door frames, plus entire area of floor and floor covering. Spray to moisten the treatment area; but not to the point of saturation. Use caution as some surfaces may become slippery. Allow to air dry.

STORAGE & DISPOSAL

Do not contaminate water, food or feed by storage or disposal.

Storage: Store in the original sealed container in a cool, dry, well ventilated area inaccessible to children and pets.

Disposal: If empty: Non-refillable container: Do not reuse or refill this container. Place in trash or offer for recycling if available.

If partly filled: Call your local solid waste agency for disposal instruction. Never place unused product down any indoor or outdoor drain.