

TRUSTED SINCE 1926
BONIDE[®]

Eight[®] Insect Control

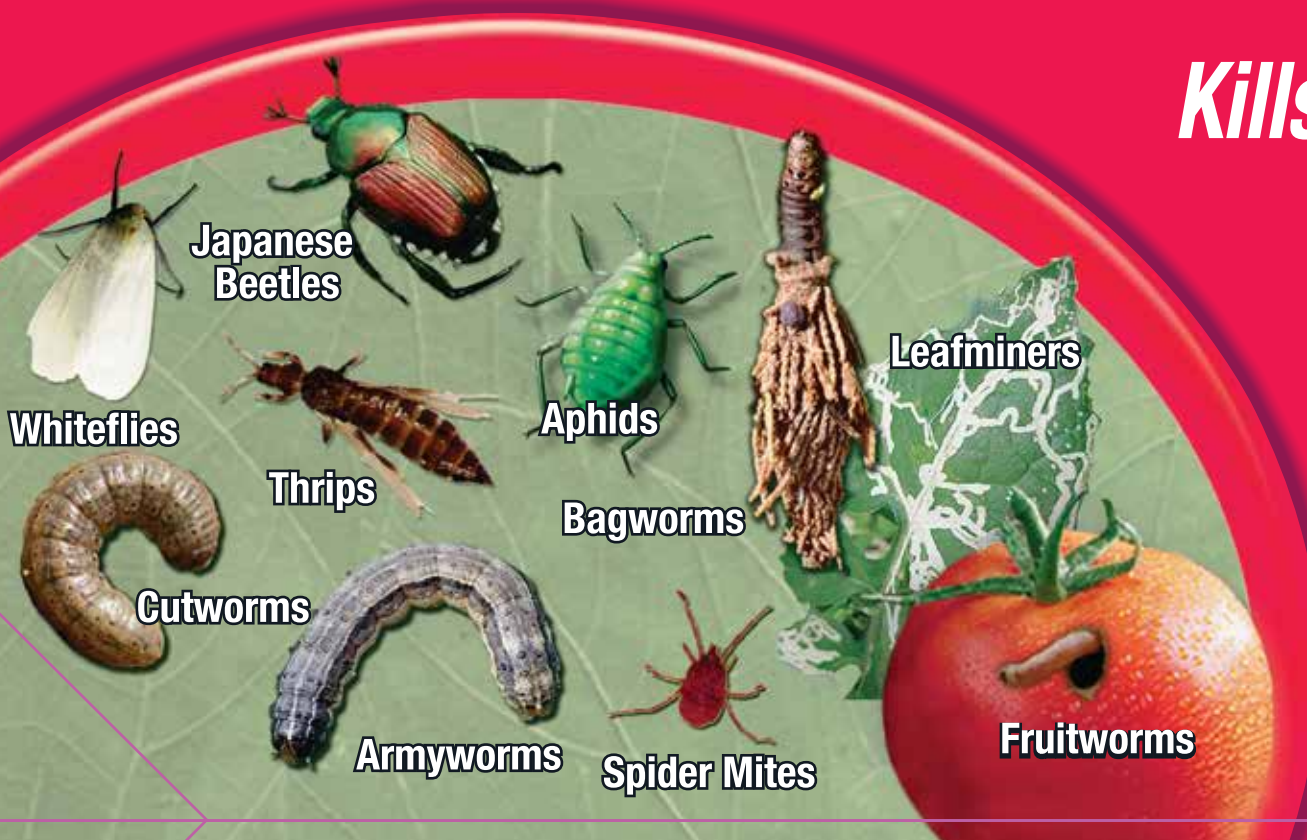
Garden Dust

Contact and residual control of over 55 hard to kill insects

Use on vegetables, roses & flowers

Contact & residual control for up to 4 weeks

Kills & Repels



ACTIVE INGREDIENT:
 Permethrin (CAS No. 52645-53-1) 0.125%
 OTHER INGREDIENTS: 99.875%
 TOTAL 100.000%

Cis/trans ratio: min. 35% ± cis and max 65% ± trans
 EPA Est. No. 4-NY-1 EPA Reg. No. 4-409

For Use Only In and Around the House

Keep Out Of Reach Of Children
CAUTION (See back panel for additional
 Precautionary Statements and First Aid
 Net Weight 3 lbs. (1.36 kg.)

BOTTOM
Eight[®]
Insect Control
GUSSET

Garden Dust



Garden Dust

DIRECTIONS FOR USE: It is a violation of Federal law to use this product in a manner inconsistent with its labeling.

General Precautions and Restrictions

Not for broadcast use on indoor residential surfaces. Avoid contamination of feed and foodstuffs. Remove pets and birds and cover fish aquaria before dusting. Do not use on humans. Do not allow children or pets to contact treated areas. Do not allow adults, children, or pets to enter the treated area until dusts have settled. Do not apply this product in a way that will contact adults, children or pets, either directly or through drift. Do not water the treated area to the point of runoff. Do not make applications during rain. Application is prohibited directly into sewers or drains, or to any area like a gutter where drainage to sewers, storm drains, water bodies, or aquatic habitat can occur. Do not allow the product to enter any drain during or after application.

For Dusting Plants: Be sure to lightly cover all plant surfaces. Do not apply when bees are active in the area. Do not apply if rain is expected within 24 hours. Do not apply if wind causes drift.

Protects Your Roses, Flowers & Vegetables From: Alfalfa Loopers, Ants, Aphids, Armyworms, Bagworms, Beetles, Borers, Brown Dog Ticks, Budworms, Cabbageworms, Chinch Bugs, Cicadas, Citrus Black Flies, Codling Moths, Corn Earworms, Crickets, Cutworms, Earwigs, Elm Spanworms, Fall Cankerworms, Fire Ants, Fleas, Green Fruitworms, Gnats, Grasshoppers, Inchworms, Japanese Beetles, Leafhoppers, Leafminers, Leafrollers, Lone Star Ticks, Lygus Bugs, Mealybugs, Millipedes, Mole Crickets, Moths, Navel Orange Worms, Scales, Sowbugs (Pillbugs), Spider Mites, Spring Cankerworms, Tent Caterpillars, Thrips, Tobacco Budworms, Weevils, Whiteflies and Many Others.

VEGETABLES

For Home Vegetable Gardens: Dust upper and lower leaf surfaces. Use sufficient amount to obtain full coverage of all foliage. Apply no more than 13 ounces over 100 linear feet, or 13 ounces per 100 square feet.

Sites	Pests	How to Use
Asparagus (pre-harvest)	Asparagus Beetles, Cutworms	Apply as needed to ensure uniform coverage. Do not apply more than 4 applications per crop. Can be applied up to 3 days prior to harvest.
(post-harvest)	Larval stages of Asparagus Beetles; Tarnished Plant Bugs; Lygus Bugs and Adult Japanese Beetles.	Treat ferns or bush growth after spear harvest when insects are present.
Celery-See Leafy Vegetables		
Cole Crops: Broccoli, Brussels Sprouts, Cabbage, Cauliflower	Beet Armyworms, Cabbage Aphids, Cabbage Loopers, Diamond Back Moths, Imported Cabbageworms	Apply every 5 days or as needed. Do not make more than 8 applications on Cauliflower, Brussels Sprouts and Broccoli and 10 applications on Cabbage. Can be applied up to 2 days prior to harvest.
Corn-see Sweet Corn		
Cucurbits: Balsam Pear (Bitter Melon), Chinese Waxgourd (Chinese Preserving Melon), Citron Melon, Cucumber, Gherkin, Edible Gourds; Melons including hybrids such as Cantaloupe Casaba, Crenshaw, Honeydew, Honey Balls, Mango Melon, Muskmelon, Persian Melon, Pumpkin, Summer & Winter Squash, Watermelon	Aphids, Cabbage Loopers, Cucumber Beetles (Adults), Cutworms, Leafhoppers, Leafminers, Melonworms, Pickleworms, Plant Bugs, Squash Bugs.	Apply as needed to ensure uniform coverage. Do not make more than 8 applications per crop. Can be applied up to the day of harvest.
Eggplant	Colorado Potato Beetles, Vegetable Leafminers	Apply as needed to ensure uniform coverage. Do not exceed 16 applications. Can be applied up to 3 days prior to harvest.
Horseradish	Imported Crucifer Weevils	Apply as needed. Do not exceed 3 foliar applications. Can be applied up to 22 days prior to harvest.
Leafy Vegetables: Amaranth, Arugula, Celery, Celuice, Chervil, Corn Salad, Chrysanthemum (Edible-Leaved and Garland), Cress (Garden and Upland), Dandelion, Dock, Endive, Fennel, Lettuce (Head and Leaf), Orach, Parsley, Purslane (Garden and Winter), Rhubarb, Spinach, Swiss Chard	Alfalfa Loopers, Aphids, Beet Armyworms, Cabbage Loopers, Corn Earworms, Cutworms, European Corn Borers, Fall Armyworms, Green Cloverworms, Southern Armyworms, Tobacco Budworms, Vegetable Leafminers.	Apply every 5 to 10 days as needed. Do not apply more than 7 applications per crop. Can be applied up to 1 day prior to harvest.
Melons-see Cucurbits		
Potatoes	Beet Armyworms, Colorado Potato Beetles, Potato Leafhoppers, Potato Tuberworms, Cabbage Loopers, Cutworms, European Corn Borers, Potato Psyllids, Tarnished Plant Bugs.	Apply as needed. Do not apply more than 12 applications. Can be applied up to 7 days prior to harvest.
Peppers	Vegetables Leafminers, Cabbage Loopers, Flea Beetles, Corn Earworms, Pepper Weevils, European Corn Borers.	Apply as needed. Do not apply more than 8 applications per crop. Can be applied up to 3 days prior to harvest.
Sweet Corn	Corn Earworms, European Corn Borers, Fall Armyworms, Southern Armyworms	Apply every 5 days and when needed. Do not apply more than 6 applications per season. Can be applied up to 1 day prior to harvest.
Tomatoes: (Do not apply on cherry tomatoes and varieties yielding tomatoes less than one inch in diameter.)	Beet and Southern Armyworms, Tomato Pinworms, Tomato Fruitworms, Hornworms, Granulate Cutworms, Colorado Potato Beetles, Cabbage Loopers	Apply as needed for uniform coverage. Do not apply more than 6 applications per season. Can be applied up to day of harvest.

DIRECTIONS FOR APPLYING ROSES & FLOWERS		
Sites	Pests	How to Use
Ageratum, Aster, Ardisia, Azalea, Baby's Breath, Begonia, Birds-nest Fern, Bleeding Heart, Carnation, Chrysanthemum, Coleus, Common Ninebark and Snowberry, Crown of Thorns, Cockscomb, Cyclamen, Dracaena, Dumbcane, English Ivy, Exacum, Fuschia, Gladiolus, Grape Ivy, Gold Bells, Hypoestes, Ivy, Juniper, Lily, Marigold, Mock-orange, Nannyberry, Orchid, Palm, Pansy, Pea Shrub, Peperomia, Petunia, Philodendron, Piggy-back Plant, Poinsettia, Portulaca, Pothos, Prayer Plant, Purple Passion, Rabbits Foot Fern, Rhododendron, Rose, Schefflera, Snapdragon, Snake Plant, Statice, Velvet Plant, Verbena, Zinnia	Aphids, Armyworms, Bagworms, Cabbage Worms, Cicadas, Corn Earworms, Cutworms, Exposed Thrips, Fall Cankerworms, Fall Webworms, Fungus Gnats, Inchworms, Japanese Beetles, Leafminers, Leafrollers, Mealybugs, Scale Crawlers, Spring Cankerworms, Spider Mites, Whiteflies, Rose Chafers, Psyllids, Scale Insects	Apply at the first sign of insects. Lightly cover all plant surfaces. Repeat as necessary; use at intervals of 4-8 days. Applications can be made up to the day of collection.

Use with care on ferns, palms and fuschia. As with all plants listed above, especially carnations, chrysanthemums, and roses, there exists a wide variety of species and cultivars, and therefore, a wide variety of susceptibility to injury. To ascertain possible phytotoxicity, dust a few plants as described above, wait 24 hours, and check for possible injury.

Repeat applications may be necessary to control citrus blackflies on non-bearing citrus; adult Japanese beetles on roses.

On Tent caterpillars, application should be made when caterpillars are young and tents are first noticed. For best results, apply in the late afternoon or evening, when caterpillars have returned to their tents. A few caterpillars may be seen escaping from the tent; however, they should die within several hours.

OTHER OUTDOOR AREAS

Use **Bonide Eight Insect Control Dust** on **Ants, Crickets, Earwigs, Fleas, Lone Star Ticks** for treatment of localized infestations of these insects in areas where there are weeds or bushy non-crop areas, dust infested areas thoroughly. **For Ants,** thoroughly treat hills and runways. Repeat application as reinfestations occur.

STORAGE AND DISPOSAL

Do not contaminate water, food or feed by storage or disposal.
Pesticide Storage: Store and transport in an upright position. Store in a cool dry area inaccessible to children or pets.
Pesticide Disposal: If partly filled – Call your local solid waste agency for disposal instructions. Never place unused product down any indoor or outdoor drain.
Container Disposal: If empty – Non-refillable container. Do not reuse or refill this container. Place in trash or offer for recycling if available.

FIRST AID

Have the product container or label with you when calling a poison control center or doctor, or going for treatment. You may also contact the National Pesticide Information Center at 1-800-858-7378 for emergency medical treatment information.

If Swallowed:	<ul style="list-style-type: none"> Call poison control center or doctor immediately for treatment advice. Have person sip a glass of water if able to swallow. Do not induce vomiting unless told to do so by the poison control center or doctor. Do not give anything by mouth to an unconscious person.
If on Skin or Clothing:	<ul style="list-style-type: none"> Take off contaminated clothing. Rinse skin immediately with plenty of water for 15-20 minutes. Call a poison control center or doctor for treatment advice.
If Inhaled:	<ul style="list-style-type: none"> Move person to fresh air. If person is not breathing, call 911 or an ambulance, then give artificial respiration, preferably by mouth-to-mouth, if possible. Call a poison control center or doctor for further treatment advice.
If in Eyes:	<ul style="list-style-type: none"> Hold eye open and rinse slowly and gently with water for 15-20 minutes. Remove contact lenses, if present, after the first 5 minutes, then continue rinsing eye. Call a poison control center or doctor for treatment advice.

PRECAUTIONARY STATEMENTS

HAZARDS TO HUMANS AND DOMESTIC ANIMALS

CAUTION: May be harmful if swallowed or absorbed through skin. Avoid breathing dust. Avoid contact with skin, eyes or clothing. Wash thoroughly with soap and water after handling and before eating, drinking, chewing gum or using tobacco, or using the toilet. Remove and wash contaminated clothing before reuse.

ENVIRONMENTAL HAZARDS

This pesticide is extremely toxic to aquatic organisms, including fish and invertebrates. To protect the environment, do not allow pesticide to enter or run off into storm drains, drainage ditches, gutters or surface waters. Applying this product in calm weather when rain is not predicted for the next 24 hours will help ensure that wind or rain does not blow or wash pesticide off the treatment area. This product is highly toxic to bees exposed to direct treatment on blooming crops or weeds. Do not apply this product or allow it to drift to blooming crops or weeds while bees are actively visiting the treatment area.

NOTICE: To the extent consistent with applicable law, buyer assumes all responsibility for safety and use not in accordance with directions.

For information on pesticide products (including health concerns, medical emergencies, or pesticide incidents), call the National Pesticide Information Center at 1-800-858-7378.

Bonide Products, Inc.
 6301 Sutliff Road
 Oriskany, NY 13424
 ©Bonide Products, Inc.
 All Rights Reserved

