

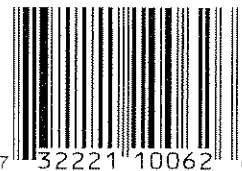


ferti-lome®



Produced For:
VOLUNTARY PURCHASING
GROUPS, INC.
230 FM 87

BONHAM, TX 75418
Visit Us At: www.fertilome.com
EPA Reg. No. 44446-62-7401
EPA Est. No. 44446-TX-1
20M-10-77



7 32221 10062 6

READ ENTIRE LABEL BEFORE EACH USE.
FOR PET USES: USE ONLY ON DOGS.

DIRECTIONS FOR USE

It is a violation of Federal Law to use this product in a manner inconsistent with its labeling.

Not for use on Plants being grown for sale or other commercial use, or for commercial seed production, or for research purposes. For use on Plants intended for aesthetic purposes or climatic modification and being grown in Ornamental Gardens or Parks, or on Golf Courses or Lawns and Grounds.

Do not use in the edible product areas of food/food processing plants, restaurants or other areas where food/feed is commercially prepared or processed. Do not use in serving areas while food is exposed or facility is in operation. Serving areas are areas where prepared foods are served such as dining rooms but excluding areas where foods may be prepared or held. Not for use in Federally Inspected Meat and Poultry Plants. In the home, cover all food handling surfaces and cover or remove all food and cooking utensils, or wash thoroughly after treatment. Exposed food should be covered or removed.

NONFOOD AREAS: ferti-lome® INDOOR/OUTDOOR MULTI-PURPOSE INSECT SPRAY may be applied in nonfood/feed areas. Nonfood/feed establishment areas are areas such as garbage rooms, lavatories, floor drains (to sewers), entries and vestibules, offices, locker rooms, machine rooms, boiler rooms, mop closets and storage (after canning or bottling).

SHAKE WELL BEFORE USING
Remove protective cap, hold container upright and spray from a distance of 12 to 15 inches. Remove birds and cover fish aquariums before spraying. Spray until surface is just damp, but not to the point of wetness or run-off. Avoid excessive application. Keep Children and/or pets out of treated areas during treatment. Do not apply this product to or near children's toys. Vacate room after treatment and ventilate before reoccupying. Cover or remove fishbowls.

HOUSEFLIES, FRUIT FLIES, MOSQUITOES, GNATS, BLACK FLIES, SKIPPER FLIES, BLOW FLIES AND SMALL FLYING MOTHS: Close all doors and windows and spray room at the rate of 2 to 3 seconds per 1,000 cubic feet. Direct spray to all parts of the room, especially windows and other light sources which attract these insects. Keep nozzle in constant motion. Upon reentry, open windows and ventilate for at least 2 hours. Repeat treatment once a month.

COCKROACHES, WATERBUGS, PALMETTO BUGS, SILVERFISH, FIREBRATS, CRICKETS, SCORPIONS, SPIDERS, MILLIPEDES, CENTIPEDES, SOWBUGS, AND PILLBUGS: Spray into hiding places such as cracks and crevices, behind sinks, cabinets, along baseboards and floors, around drains and plumbing, hitting Insects with spray whenever possible. Upon reentry, open windows and ventilate for at least 2 hours. Repeat treatment once a month.

ANTS: Spray trails, nests and points of entry. Spray on Ants where possible. Repeat treatment once a month.

CARPET BEETLES: Spray directly on Beetles, floors, baseboards, shelves and carpets. Repeat treatment once a month.

BEDBUGS: Spray mattresses, particularly around tufts and seams. Take beds apart and spray into all joints. Treat baseboards, moldings and floors. Allow all sprayed articles to dry thoroughly before reuse. After mattress is dry, cover with mattress cover and sheet. Do not use mattress without cover. Repeat treatment once a month.

FLEAS AND TICKS: (ADULTS AND LARVAE): Remove and thoroughly clean or destroy pet bedding. Spray pet sleeping quarters, bed, entire floor and floor covering, with special attention to cracks and crevices around baseboards, and window and door frames. Infested upholstered furniture may also be treated with this product. A test application should be made to upholstery or drapery fabrics in an inconspicuous place before use.

TO CONTROL FLEAS AND TICKS ON DOGS: Starting at the tail, stroke against the lay of the hair, spraying the parted fur in short bursts, directly behind the hand to insure penetrating the coat. Dampen the fur up to the head. Repeat application every two weeks if necessary.

FOR THE CONTROL OF GARDEN INSECTS: For use on Roses, Dahlias, Asters and other Ornamentals to kill Japanese Beetles hit by spray as well as *Whiteflies*, *Aphids*, exposed *Thrips*, *Spiders*, *Red Mites* and *Leafminers*. May be used on Plants, as well as a multi-purpose spray in small Gardens and for spot treatments of incipient Insect infestations to prevent spreading in large Garden areas.

May also be used on other Plants such as African Violets, Asters, Azaleas, Begonias, Camellias, Carnations, Chrysanthemums, Dahlias, Delphiniums, Dogwood, English Ivy, Euonymus, Fuschia, Geraniums, Crassula, Grape Vine, Kentia Palm, Laurel, Marigolds, Rhododendrons, Roses, Rubber Plants, Snapdragons, Stocks, Wandering Jews, and Zinnias.

Effective when used as directed against *Whiteflies*, *Aphids*, *Spider* and *Red Mites*, exposed *Thrips*, *Lady Bugs*, *Japanese Beetles*, *Pavement Ants*, *Clover Mites* and *Army Worms*. When spraying Plants, do not operate closer than 18 inches. Use sweeping motion. Spray in one second bursts. Be cautious about wetting tender foliage, young Plants and new growth. Do not spray Plants when temperatures exceed 90°F. Contact Insects directly whenever possible. Repeat treatment as infestations occur.

NOTICE: Buyer assumes all responsibility for safety and use not in accordance with directions.

STORAGE AND DISPOSAL

Do not contaminate water, food or feed by storage or disposal. **STORAGE:** Do not store near heat or open flame. Store in cool dry area away from children. **DISPOSAL:** Do Not Puncture or Incinerate! If Empty: Place in trash or offer for recycling if available. If partly filled: Call your local solid waste agency or 1-800-CLEANUP for disposal instructions.

**PRECAUTIONARY STATEMENTS
HAZARDS TO HUMANS AND DOMESTIC ANIMALS**

Harmful if absorbed through skin. Avoid inhalation of spray mist. Causes eye irritation. Avoid contact with skin, eyes, or clothing. Wash thoroughly with soap and water after handling and before eating, drinking, chewing gum or using tobacco. Remove and wash contaminated clothing before reuse. Avoid contamination of feed and food stuffs.

Animals: Do not spray directly in/on eyes, mouth or genitalia of pets. Use only on dogs. Do not use on cats or kittens. Do not use on puppies less than twelve (12) weeks old. Consult a Veterinarian before using this product on debilitated, aged, pregnant, medicated or nursing animals. Sensitivities may occur after using any pesticide product for pets. If signs of sensitivity occur, bathe your pet with mild soap and rinse with large amounts of water. If signs continue, consult a Veterinarian immediately.

FIRST AID

If Inhaled: Move person to fresh air. If person is not breathing, call 911 or an ambulance, then give artificial respiration, preferably by mouth-to-mouth, if possible. Call a poison control center or doctor for further treatment advice.

If on Skin or Clothing: Take off contaminated clothing. Rinse skin immediately with plenty of water for 15-20 minutes. Call a poison control center or doctor for treatment advice.

If in Eyes: Hold eye open and rinse slowly and gently with water for 15-20 minutes. Remove contact lenses, if present, after the first 5 minutes, then continue rinsing eye. Call a poison control center or doctor for treatment advice. Have the product container or label with you when calling a poison control center or doctor or going for treatment.

ENVIRONMENTAL HAZARDS

This product is toxic to fish. Do not apply to any body of water. Do not contaminate water when disposing of equipment washwaters.

PHYSICAL OR CHEMICAL HAZARDS

Contents under pressure. Do not use or store near heat or open flame. Do not puncture or incinerate container. Exposure to temperatures above 130°F may cause bursting. Do not use this product in or on electrical equipment due to the possibility of shock hazard.

INGREDIENTS (CAS#): Water (7732-18-5), Propane-Isobutane (68476-85-7), Petroleum Distillate (8002-05-9), Permethrin (52645-53-1).

HMIS RATINGS: HEALTH - 1, FLAMMABILITY - 2, REACTIVITY - 1, PERSONAL - A.

**Indoor\Outdoor
Multi-purpose Insect Spray**

Containing
MICROEMULSIFIED PERMETHRIN

- Controls whiteflies, aphids, red spider mites on roses, ornamentals, and other plants.
- Controls cockroaches, mosquitoes, crickets, spiders, scorpions, and many other listed insects.
- Controls fleas and ticks on dogs for 14 days.

**KEEP OUT OF
REACH OF
CHILDREN
CAUTION**

SEE SIDE PANEL FOR
ADDITIONAL PRECAUTIONARY
STATEMENTS

ACTIVE INGREDIENTS:

*Permethrin0.25%

OTHER INGREDIENTS:.....99.75%

TOTAL:.....100.00%

1(3-phenoxyphenyl)methyl(+/-) cis/trans

3-(2, 2-dichloroethenyl)-2, 2-dimethylcyclopropanecarboxylate

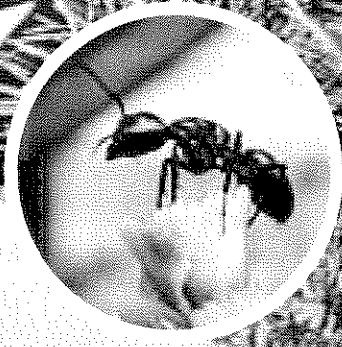
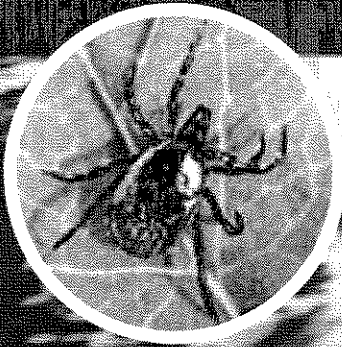
(Cis/Trans ratio: Min. 35% (+/-) cis and max. 65% (+/-) trans.)

Net Weight 11 OZS. (312 G)

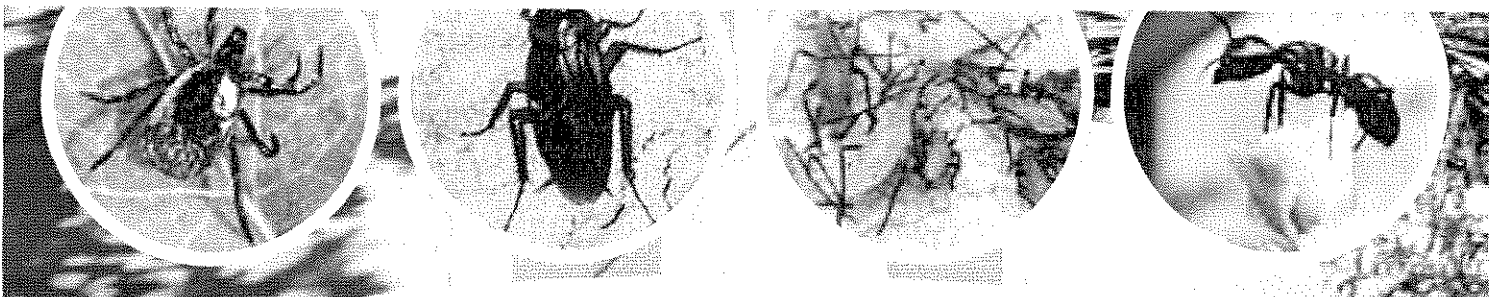
REV 11-1-10 322



ferti·lome®



Indoor\Outdoor
Multi-purpose Insect Sprav



Indoor\Outdoor Multi-purpose Insect Spray

Containing
MICROEMULSIFIED PERMETHRIN

- Controls whiteflies, aphids, red spider mites on roses, ornamentals, and other plants.
- Controls cockroaches, mosquitoes, crickets, spiders, scorpions, and many other listed insects.
- Controls fleas and ticks on dogs for 14 days.

**KEEP OUT OF
REACH OF
CHILDREN
CAUTION**

SEE SIDE PANEL FOR
ADDITIONAL PRECAUTIONARY
STATEMENTS

ACTIVE INGREDIENTS:

*Permethrin	0.25%
OTHER INGREDIENTS:.....	99.75%
TOTAL:	100.00%

1(3-phenoxyphenyl)methyl(+/-) cis/trans
3-(2, 2-dichloroethenyl)-2, 2-dimethylcyclopropanecarboxylate
(Cis/Trans ratio: Min. 35% (+/-) cis and max. 65% (+/-) trans.)

Net Weight 11 OZS. (312 G)



Produced For:
**VOLUNTARY PURCHASING
GROUPS, INC.**
230 FM 87
BONHAM, TX 75418
Visit Us At: www.fertilome.com
EPA Reg. No. 44446-62-7401
EPA Est. No. 44446-TX-1
20M-10-77



**READ ENTIRE LABEL BEFORE EACH USE.
FOR PET USES: USE ONLY ON DOGS.**

DIRECTIONS FOR USE

It is a violation of Federal Law to use this product in a manner inconsistent with its labeling.

Not for use on Plants being grown for sale or other commercial use, or for commercial seed production, or for research purposes. For use on Plants intended for aesthetic purposes or climactic modification and being grown in Ornamental Gardens or Parks, or on Golf Courses or Lawns and Grounds.

Do not use in the edible product areas of food/feed processing plants, restaurants or other areas where food/feed is commercially prepared or processed. Do not use in serving areas while food is exposed or facility is in operation. Serving areas are areas where prepared foods are served such as dining rooms but excluding areas where foods may be prepared or held. Not for use in Federally Inspected Meat and Poultry Plants.

In the home, cover all food handling surfaces and cover or remove all food and cooking utensils, or wash thoroughly after treatment. Exposed food should be covered or removed.

NONFOOD AREAS: *ferti-lome*® **INDOOR/OUTDOOR MULTI-PURPOSE INSECT SPRAY** may be applied in nonfood/feed areas. Nonfood/feed establishment areas are areas such as garbage rooms, lavatories, floor drains (to sewers), entries and vestibules, offices, locker rooms, machine rooms, boiler rooms, mop closets and storage (after canning or bottling).

SHAKE WELL BEFORE USING

Remove protective cap, hold container upright and spray from a distance of 12 to 15 inches. Remove birds and cover fish aquariums before spraying.

Spray until surface is just damp, but not to the point of wetness or run-off. Avoid excessive application. Keep Children and/or pets out of treated areas during treatment. Do not apply this product to or near children's toys. Vacate room after treatment and ventilate before reoccupying. Cover or remove fishbowls.

HOUSEFLIES, FRUIT FLIES, MOSQUITOES, GNATS, BLACK FLIES, SKIPPER FLIES, BLOW FLIES AND SMALL FLYING MOTHS: Close all doors and windows and spray room at the rate of 2 to 3 seconds per 1,000 cubic feet. Direct spray to all

FOR THE CONTI
and other Ornami
Aphids, exposed 7
as well as a multi-
ent Insect infestati
May also be used
Camellias, Carnati
Euonymus, Fusch
Rhododendrons, F
Zinnias.

Effective when us
exposed *Thripes*,
Army Worms. Wt
sweeping motion.
foliage, young Pl
exceed 90°F. Cont
tations occur.

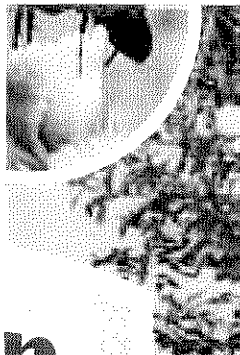
**NOTICE: Buyer ;
dance with direc**

Do not contamina
store near heat or
AL: Do Not Punc
if available. **If part**
disposal instructio

HAZ

Harmful if absorbe
Avoid contact with
handling and befc
wash contaminat
stuffs.

Animals: Do not
dogs. Do not use o
old. Consult a Vet
medicated or nurs
uct for pets. If sign



r

r

es,

rs,

1.25%

1.75%

1.00%

oxylate
trans.)

INSECT SPRAY may be applied in nonfood/feeder areas. Nonfood/feeder establishment areas are areas such as garbage rooms, lavatories, floor drains (to sewers), entries and vestibules, offices, locker rooms, machine rooms, boiler rooms, mop closets and storage (after canning or bottling).

SHAKE WELL BEFORE USING

Remove protective cap, hold container upright and spray from a distance of 12 to 15 inches. Remove birds and cover fish aquariums before spraying.

Spray until surface is just damp, but not to the point of wetness or run-off. Avoid excessive application. Keep Children and/or pets out of treated areas during treatment. Do not apply this product to or near children's toys. Vacate room after treatment and ventilate before reoccupying. Cover or remove fishbowls.

HOUSEFLIES, FRUIT FLIES, MOSQUITOES, GNATS, BLACK FLIES, SKIPPER FLIES, BLOW FLIES AND SMALL FLYING MOTHS: Close all doors and windows and spray room at the rate of 2 to 3 seconds per 1,000 cubic feet. Direct spray to all parts of the room, especially windows and other light sources which attract these Insects. Keep nozzle in constant motion. Upon reentry, open windows and ventilate for at least 2 hours. Repeat treatment once a month.

COCKROACHES, WATERBUGS, PALMETTO BUGS, SILVERFISH, FIREBRATS, CRICKETS, SCORPIONS, SPIDERS, MILLIPEDES, CENTIPEDES, SOWBUGS, AND PILLBUGS: Spray into hiding places such as cracks and crevices, behind sinks, cabinets, along baseboards and floors, around drains and plumbing, hitting Insects with spray whenever possible. Upon reentry, open windows and ventilate for at least 2 hours. Repeat treatment once a month.

ANTS: Spray trails, nests and points of entry. Spray on Ants where possible. Repeat treatment once a month.

CARPET BEETLES: Spray directly on Beetles, floors, baseboards, shelves and carpets. Repeat treatment once a month.

BEDBUGS: Spray mattresses, particularly around tufts and seams. Take beds apart and spray into all joints. Treat baseboards, moldings and floors. Allow all sprayed articles to dry thoroughly before reuse. After mattress is dry, cover with mattress cover and sheet. Do not use mattress without cover. Repeat treatment once a month.

FLEAS AND TICKS: (ADULTS AND LARVAE): Remove and thoroughly clean or destroy pet bedding. Spray pet sleeping quarters, bed, entire floor and floor covering, with special attention to cracks and crevices around baseboards, and window and door frames. Infested upholstered furniture may also be treated with this product. A test application should be made to upholstery or drapery fabrics in an inconspicuous place before use.

TO CONTROL FLEAS AND TICKS ON DOGS: Starting at the tail, stroke against the lay of the hair, spraying the parted fur in short bursts, directly behind the hand to insure penetrating the coat. Dampen the fur up to the head. Repeat application every two weeks if necessary.

HAZ

Harmful if absorbed. Avoid contact with handling and before wash contaminated stuffs.

Animals: Do not use on dogs. Do not use on old. Consult a Veterinarian for medicated or nursing product for pets. If significant large amounts of

If Inhaled: Move to fresh air, then give artificial respiration. Call a poison control center. **If on Skin or Clothing:** Wash with plenty of water for several days. Get medical advice.

If in Eyes: Hold eye open. Remove contact lenses. Call a poison control center. Have the product removed by a doctor or going to hospital.

This product is toxic to water when disposed.

Contents under pressure or incinerate container. Do not use this product if hazardous.

INGREDIENTS (C) Petroleum Distillate
HVIR RATINGS: HI



**USE BEFORE EACH USE.
TOXIC TO DOGS.**

FOR USE
Do not use in a manner inconsistent with its

other commercial use, or for commercial use.
For use on Plants intended for aesthetic purposes, growing in Ornamental Gardens and

Indoor areas. Do not use in food processing plants, restaurants or areas where food is prepared or processed. Do not use in service areas. Serving areas are areas where food is prepared but excluding areas where foods may be stored. Meat and Poultry Plants.

Do not cover or remove all food and cooking utensils. Exposed food should be covered or

INDOOR/OUTDOOR MULTI-PURPOSE
Indoor areas. Nonfood/feed establishment areas, floor drains (to sewers), entries, restrooms, boiler rooms, mop closets and

FOR USING
Spray and spray from a distance of 12 to 15 feet before spraying. Avoid wetness or run-off. Avoid spraying children's toys. Vacate room after treatment or remove fishbowls.

FOR GNATS, BLACK FLIES, SKIPPER BUTTERFLIES: Close all doors and windows in a room of 1,000 cubic feet. Direct spray to all

FOR THE CONTROL OF GARDEN INSECTS: For use on Roses, Dahlias, Asters and other Ornamentals to kill Japanese Beetles hit by spray, as well as *Whiteflies*, *Aphids*, exposed *Thrips*, *Spiders*, *Red Mites* and *Leafminers*. May be used on Plants, as well as a multi-purpose spray in small Gardens and for spot treatments of incipient Insect infestations to prevent spreading in large Garden areas.

May also be used on other Plants such as African Violets, Asters, Azaleas, Begonias, Camellias, Carnations, Chrysanthemums, Dahlias, Delphiniums, Dogwood, English Ivy, Euonymus, Fuschia, Geraniums, Crassula, Grape Vine, Kentia Palm, Laurel, Marigolds, Rhododendrons, Roses, Rubber Plants, Snapdragons, Stocks, Wandering Jews, and Zinnias.

Effective when used as directed against *Whiteflies*, *Aphids*, *Spider* and *Red Mites*, exposed *Thrips*, *Lady Bugs*, *Japanese Beetles*, *Pavement Ants*, *Clover Mites* and *Army Worms*. When spraying Plants, do not operate closer than 18 inches. Use sweeping motion. Spray in one second bursts. Be cautious about wetting tender foliage, young Plants and new growth. Do not spray Plants when temperatures exceed 90°F. Contact Insects directly whenever possible. Repeat treatment as infestations occur.

NOTICE: Buyer assumes all responsibility for safety and use not in accordance with directions.

STORAGE AND DISPOSAL

Do not contaminate water, food or feed by storage or disposal. **STORAGE:** Do not store near heat or open flame. Store in cool dry area away from children. **DISPOSAL: Do Not Puncture or Incinerate! If Empty:** Place in trash or offer for recycling if available. **If partly filled:** Call your local solid waste agency or 1-800-CLEANUP for disposal instructions.

PRECAUTIONARY STATEMENTS HAZARDS TO HUMANS AND DOMESTIC ANIMALS

Harmful if absorbed through skin. Avoid inhalation of spray mist. Causes eye irritation. Avoid contact with skin, eyes, or clothing. Wash thoroughly with soap and water after handling and before eating, drinking, chewing gum or using tobacco. Remove and wash contaminated clothing before reuse. Avoid contamination of feed and food stuffs.

Animals: Do not spray directly in/on eyes, mouth or genitalia of pets. Use only on dogs. Do not use on cats or kittens. Do not use on puppies less than twelve (12) weeks old. Consult a Veterinarian before using this product on debilitated, aged, pregnant, medicated or nursing animals. Sensitivities may occur after using any pesticide product for pets. If signs of sensitivity occur, bathe your pet with mild soap and rinse with

in areas. Non food/feed establishment
kitchens, floor drains (to sewers), entries
rooms, boiler rooms, mop closets and

RE USING

and spray from a distance of 12 to 15
feet before spraying.

at the point of wetness or run-off. Avoid
spraying out of treated areas during treat-
ment. Children's toys. Vacate room after treat-
ment. Remove fishbowls.

SPRING, GNATS, BLACK FLIES, SKIPPER

SPRING: Close all doors and windows
in a room of 1,000 cubic feet. Direct spray to all
near light sources which attract these
insects. Reentry, open windows and ventilate
room.

SPRING, SILVERFISH, FIRE- ANTS, MILLIPEDES, CENTIPEDES,

in places such as cracks and crevices,
around drains and plumbing, hit-
ing. Reentry, open windows and ventilate
room.

spray on Ants where possible. Repeat

on floors, baseboards, shelves and car-

pet tufts and seams. Take beds apart
mattresses and floors. Allow all sprayed arti-
cles to dry, cover with mattress cover
Repeat treatment once a month.

E): Remove and thoroughly clean or
replace rug, bed, entire floor and floor covering,
around baseboards, and window and
curtains also be treated with this product. A
vacuum drapery fabrics in an inconspicuous

S: Starting at the tail, stroke against
the direction of the fur, directly behind the hand to
the head. Repeat application every

PRECAUTIONARY STATEMENTS HAZARDS TO HUMANS AND DOMESTIC ANIMALS

Harmful if absorbed through skin. Avoid inhalation of spray mist. Causes eye irritation. Avoid contact with skin, eyes, or clothing. Wash thoroughly with soap and water after handling and before eating, drinking, chewing gum or using tobacco. Remove and wash contaminated clothing before reuse. Avoid contamination of feed and food stuffs.

Animals: Do not spray directly in/on eyes, mouth or genitalia of pets. Use only on dogs. Do not use on cats or kittens. Do not use on puppies less than twelve (12) weeks old. Consult a Veterinarian before using this product on debilitated, aged, pregnant, medicated or nursing animals. Sensitivities may occur after using any pesticide product for pets. If signs of sensitivity occur, bathe your pet with mild soap and rinse with large amounts of water. If signs continue, consult a Veterinarian immediately.

FIRST AID

If Inhaled: Move person to fresh air. If person is not breathing, call 911 or an ambulance, then give artificial respiration, preferably by mouth-to-mouth, if possible. Call a poison control center or doctor for further treatment advice.

If on Skin or Clothing: Take off contaminated clothing. Rinse skin immediately with plenty of water for 15-20 minutes. Call a poison control center or doctor for treatment advice.

If in Eyes: Hold eye open and rinse slowly and gently with water for 15-20 minutes. Remove contact lenses, if present, after the first 5 minutes, then continue rinsing eye. Call a poison control center or doctor for treatment advice.

Have the product container or label with you when calling a poison control center or doctor or going for treatment.

ENVIRONMENTAL HAZARDS

This product is toxic to fish. Do not apply to any body of water. Do not contaminate water when disposing of equipment washwaters.

PHYSICAL OR CHEMICAL HAZARDS

Contents under pressure. Do not use or store near heat or open flame. Do not puncture or incinerate container. Exposure to temperatures above 130°F may cause bursting. Do not use this product in or on electrical equipment due to the possibility of shock hazard.

INGREDIENTS (CAS#): Water (7732-18-5), Propane-Isobutane (68476-85-7), Petroleum Distillate (8002-05-9), Permethrin (52645-53-1).

HMIS RATINGS: HEALTH - 1, FLAMMABILITY - 2, REACTIVITY - 1, PERSONAL - A.