

96
REV 11-01-10

Eggplant: Colorado potato beetle, vegetable leafminer. Apply to plants as needed to ensure uniform coverage. Do not make more than 16 applications per season. Can be applied up to 3 days prior to harvest.

Grapes: Leafhoppers, Japanese beetles, grape berry moths. Apply to plants as needed to ensure uniform coverage.

Horse radish: Imported crucifer weevil. Apply as needed. Do not make more than 3 foliar applications per season. Can be applied up to 22 days prior to harvest.

Leafy Vegetables: Amaranth, arugula, celery, celtuce, chervil, corn salad, chrysanthemum (edible-leaved and garland), cress (garden and upright), dandelion, dock, endive, fennel, lettuce (head and leaf), orach, parsley, purslane (garden and winter), rhubarb, spinach, Swiss chard; Alfalfa potato, aphids, beet armyworm, cabbage looper, corn earworm, cutworms, European corn borer, fall armyworm, green cloverworm, southern armyworm, tobacco budworm, vegetable leafminer. Apply every 5 to 10 days as needed. Do not make more than 7 applications per crop per season. Can be applied up to 1 day prior to harvest.

Melons: See Cucurbits.

Onions (Dry bulb and Garlic): Onion thrips, armyworm, cutworm, leafminer, onion maggot (adult), stink bug. Dust lightly. Apply up to 6 times per season. Can be applied up to 1 day prior to harvest.

Peaches: Peach twig borer, Oriental fruit moth, green fruitworm, lesser peachtree borer, plum curculio, tarnished plant bug. Dust lightly. Apply up to 5 times per season. Can be applied up to 14 days prior to harvest.

Potatoes: Beet armyworm, Colorado potato beetle, potato beetle, potato leafhopper, potato aphid, potato tuberworm, cabbage looper, cutworms, European corn borer, potato psyllid, tarnished plant bug. Apply to plants as needed. Do not make more than 12 applications per season. Can be applied up to 7 days prior to harvest.

Peppers: Vegetable leafminer, cabbage looper, flea beetle, corn earworm, pepper weevil, European corn borer. Apply to plants as needed. Do not make more than 8 applications per season. Can be applied up to 3 days prior to harvest.

Strawberries: Meadow spittlebugs, leafrollers. Apply to plants as needed to ensure uniform coverage. Can be applied up to 1 day prior to harvest.

Sweet Corn: Corn earworms, European corn borers, fall armyworms, southern armyworms. Apply to plants every 5 days. Do not make more than 6 applications per season. Can be applied up to 1 day prior to harvest.

Tomatoes (Do not apply on cherry tomatoes and varieties yielding tomatoes less than one inch in diameter): Beet and southern armyworms, Colorado potato beetle, potato beetle, potato leafhopper, potato tuberworm, cabbage looper, cutworms, European corn borer, potato psyllid, tarnished plant bug. Apply to plants as needed. Do not make more than 6 applications per season. Can be applied up to 1 day prior to harvest.

Walnuts: Navel orangeworm, codling moth, walnut husk fly. Dust lightly. Apply up to 8 times per season. Can be applied up to 1 day prior to harvest.

DOGS AND CATS

USE ONLY ON DOGS OR CATS. Consult a veterinarian before using this product on debilitated, aged, pregnant, nursing or medicated animals.

To control (kill) **Fleas, Ticks and Lice:** Use product only outside or in a well-ventilated area. Wearing household latex or rubber gloves, dust entire animal avoiding pet's eyes, nose, mouth and genital areas. Rub or brush pet's hair to work dust down to skin. Use 1/2 oz. on animals 20 pounds and under and 1 oz. on pets over 20 pounds. Repeat every three weeks. This product should not be applied by children. Do not use on pregnant animals. Do not use on puppies or kittens under 12 weeks of age. Dust pet bedding and doghouse using a shaker can or other dust applicator.

BEEF AND DAIRY CATTLE, HORSES, SWINE AND POULTRY

Can be used in dust bags, shaker can and mechanical dust applicator.

Horn Flies, Lice, Face Flies: Place contents of this package in any commercially available dust bag, suspend bag in areas frequented by cattle or in gateways or lanes through which the animals must pass daily for water, feed, or minerals. Bags may also be placed in feeding sheds or in front of mineral feeders. For dairy cows, bags may be suspended in the exit through which the cows leave the milking barn. The bags should hang 4 to 6 inches below the back line of the cattle. For reduction of Face Flies, bags must be located so animals will be forced to use them daily and hung at a height so that the face is dusted.

Horn Flies, Lice Direct Application: Apply 2 oz. of dust per animal by shaker can over the head, neck, shoulders, back and tailhead. Repeat as necessary.

Horses: Dust horse for horn flies with shaker can or dust glove along back, neck and legs.

Swine: Lice on Swine Direct Application: Apply only 1 ounce per head as a uniform coat to the head, shoulder and back by use of a shaker can or suitable mechanical dust applicator. Repeat as necessary but not more often than once every 10 days. In severe infestation, both animals and bedding may be treated. Do not send animals for slaughter within 5 days of treatment.

Poultry: To control Northern Fowl Mites, apply at a rate of 1 lb. per 100 birds. Ensure thorough treatment of vent area.

STORAGE AND DISPOSAL

PESTICIDE STORAGE: Store in original container. Keep in an area inaccessible to children and pets.

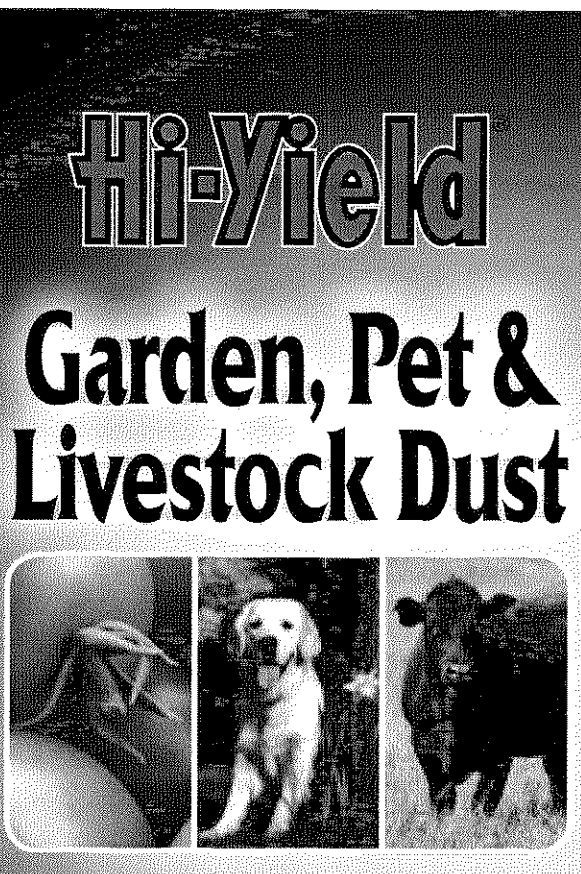
PESTICIDE DISPOSAL: If empty, non-refillable container. Do not reuse or refill this container. Place in trash or offer for recycling if available. If partly filled, call your local solid waste for disposal instructions. Never place unused product down any indoor or outdoor drain.

Note: Buyer assumes all risks of use, storage or handling of this product not in strict accordance with directions given hereon. Voluntary Purchasing Groups, Inc. warrants this product to conform to the chemical description on the label and for the purposes stated on the label. The limits of any liability incurred shall be the purchase price paid by the user or buyer.

Released For Shipment By:
VOLUNTARY PURCHASING GROUPS, INC.
230 FM 87 • BONHAM, TEXAS 75418
EPA Reg. No. 7401-447
EPA Est. No. 7401-TX-1
Visit Us At: www.hi-yield.com



15M-8-89



Hi-Yield

Garden, Pet & Livestock Dust

- A Broad-Use, Ready-To-Use Insecticide.
- For Use On Home Ornamental & Vegetable Gardens.
- For Use On Fruit And Nut Trees.
- Use On Dogs And Cats To Control Fleas, Ticks And Lice.
- Effectively Controls Cutworms, Japanese Beetles, Aphids, Squash Bugs, Armyworms And Others On Fruits and Vegetables.

ACTIVE INGREDIENT:
Permethrin, Cyfluthrin, Bifenthrin, Deltamethrin, Fenprophethrin, Lambda-Cyhalothrin, Pyrethrin, Pyrethrum, Resmethrin, Spinosad, Zeta-Cypermethrin, and others.
KEEP OUT OF REACH OF CHILDREN
CAUTION
NET WEIGHT 1 LB. 32201

PRECAUTIONARY STATEMENTS HAZARDS TO HUMAN AND DOMESTIC ANIMALS

Humans: Harmful if swallowed, inhaled. Avoid breathing dust. Avoid contact with eyes and skin. Wash thoroughly with soap and water after handling. Avoid contamination of feed and foodstuffs.

Animals: Harmful if swallowed, inhaled. Consult a veterinarian before using this product on debilitated, aged, pregnant or nursing animals or animals on medication. Sensitivities may occur after using ANY pesticide product for pets. If signs of sensitivity occur, bathe your pet with mild soap and rinse with large quantities of water. If signs continue, consult a veterinarian immediately.

ENVIRONMENTAL HAZARDS

To protect the environment, do not allow pesticide to enter or run off into storm drains, drainage ditches, gutters or surface waters. Applying this product in calm weather when rain is not predicted for the next 24 hours will help to ensure that wind or rain does not blow or wash pesticide off the treatment area.

DIRECTIONS FOR USE

It is a violation of Federal Law to use this product in a manner inconsistent with its labeling.
Not for use on plants grown for sale or other commercial or for commercial seed production or research purposes.

Ornamental Plants — Indoors: Use a dust applicator such as a shaker can, dust gun, puffer or other bulbous duster, rotary duster or other appropriate duster available.

To protect plants in indoor landscaping — Apply directly on insects to control leafrollers, armyworms, cutworms and cabbageworms on chrysanthemums and fungus gnats on velvet plant.

Dust lightly to cover both upper and lower leaf surfaces with a thin, even film of dust to control aphids, armyworms, corn earworms, fall caterpillars, cutworms, Japanese beetles, leafminers, leafrollers, mealybugs, scale crawlers, spring cankerworms, and exposed thrips of the following plants: Ageratum, Anemone, Aster, Azalea, Baby's Breath, Begonia, Bird-of-Paradise Fern, Blood-leaf Hyacinth, Canna, Chrysanthemum, Coleus, Crown of Thorns, Cockscomb, Dracaena, Fuchsia, English Ivy, Fuchsia, Gladiolus, Grape Ivy, Hydrangea, Impatiens, Juniper, Lily, Mangold, Palm, Pansy, Poinsettia, Petunia, Philodendron, Pigeon-bank Plant, Poinsettia, Portulaca, Pothos, Prayer Plant, Purple Passion, Rabbits Foot Fern, Rose, Schefflera, Sedum, Snake Plant, Statice, Velvet Plant, Verbena, Pigeonwing, Purple Passion, and Zinnia.

If application is made indoors, remove infested plants from living area prior to application. Dust plants in an area not likely to be occupied by children or pets (particularly fish). When dust settles plants can be returned to original location.

Use with care on ferns, palms and fuchsia, as with all plants listed especially carnations, chrysanthemums and roses. There exists a wide variety of species and cultivars, and therefore, a wide variety of susceptibility to injury. To ascertain possible phytotoxicity, dust a few plants as described wait 24 hours and check for possible injury.

Repeat applications may be necessary to control adult Japanese beetles on roses.

Ornamental Plants — Outdoors: Use a dust applicator such as a shaker can, dust gun, puffer or other bulbous duster, rotary duster or other appropriate duster available. Dust lightly to cover both upper and lower leaf surfaces with a thin, even film of dust. Apply when air is calm to avoid drift and contact with eyes and skin. Start applying at the farthest corner of the treatment area and work backward to avoid contact with dusted surfaces. Allow dust to settle in treated areas before reentering. Contact insects directly whenever possible. Repeat treatment as needed.

Controls aphids, cicadas, corn earworms, fall caterpillars, fall webworms, inchworms, Japanese beetles (adults), leafminers, leafrollers, mealybugs, bagworms, spider mites, whiteflies and exposed thrips on the following plants: African Violets, Ageratum, Arizona Cypress, Aster, Azalea, Begonia, Camellias, Chrysanthemum, Coleus, Common Nuts, Common Snowberry, Crocus, Dahlias, Delphinium, Dogwood, Eucalyptus, Euponymus, English Ivy, Fuchsia, Geranium, Gladiolus, Gold Bell, Grape Vines (ornamental), Hydrangea, Ivy, Laurel, Lilac, Mangold, Mock Orange, Honeysuckle, Orchid, Palm, Pansy, Pea Shrub, Petunia, Philodendron, Poinsettia, Rhododendron, Rose, Spaldragon, Stevia, Taxus, Wandering Jew, Wax Plant, Weeping Fig, Zinnia.

Home Fruit & Vegetable Gardens: Use a dust applicator such as a shaker can, dust gun, puffer or other bulbous duster, rotary duster or other appropriate duster available. Dust lightly to cover both upper and lower leaf surfaces with a thin, even film of dust. Apply when air is calm to avoid drift and contact with eyes and skin. Start applying at the farthest corner of the treatment area and work backward to avoid contact with dusted surfaces. Allow dust to settle in treated areas before reentering.

FRUITS AND VEGETABLES

Apples: Apple aphid, redbanded leafroller, obliquebanded leafroller, plum curculio, white apple leafroller, spotted tentiform leafminer, tarnished plant bug. Dust lightly. Do not apply after petal fall.

Asparagus (pre-harvest): Cutworms, asparagus beetle. Apply to plants as needed to ensure uniform coverage. Do not make more than 4 applications per season. Can be applied up to 3 days prior to harvest.

Asparagus (post-harvest): Larval stages of asparagus beetle, tarnished plant bug, fungus bugs and adult Japanese beetles. Treat fern or bush growth after seed harvest when insects are present.

Celery: See leafy vegetables.

Cole Crops: Broccoli, Brussels Sprouts, Cabbage Cauliflower: Beet armyworm, diamond back moth, imported cabbageworm, cabbage aphid, cabbage looper. Apply to plants as needed up to one day prior to harvest. Do not make more than 10 applications on cabbage and 8 applications on the other cole crops per season.

Corn: See sweet corn.

Cucurbits: Balsam pear (bitter melon), Chinese wargourd (Chinese preserving melon), Citrus melon, Cucurbit, Okra, Edible gourds, Melons — including hybrids such as cantaloupe, caska, creamhorn, honeydew, honey balls, mango melon, muskmelon, and Persian melon, pumpkin, summer & winter squash, Watermelon; Aphids, cabbage looper, cucumber beetle (adult), cutworms, leafhoppers, leafminers, meadowworm, pickleworm, plant bugs, squash bugs. Apply to plants as needed to ensure uniform coverage. Do not make more than 8 applications per crop per season. Can be applied up to the day of harvest.

Eggplant: Colorado potato beetle, vegetable leafminer. Apply to plants as needed to ensure uniform coverage. Do not make more than 16 applications per season. Can be applied up to 3 days prior to harvest.

Grapes: Leafhoppers, Japanese beetles, grape berry moths. Apply to plants as needed to ensure uniform coverage.

Horseradish: Imported crucifer weevil. Apply as needed. Do not make more than 3 foliar applications per season. Can be applied up to 22 days prior to harvest.

Leafy Vegetables: Amaranth, arrugula, celery, celluce, chervil, corn salad, chrysanthemum (edible-leaved and garland), cress (garden and upland), dandelion, dock, endive, fennel, lettuce (head and leaf), orach, parsley, purslane (garden and winter), rhubarb, spinach, Swiss chard: Alfalfa looper, aphids, beet armyworm, cabbage looper, corn earworm, cutworms, European corn borer, fall armyworm, green cloverworm, southern armyworm, tobacco budworm, vegetable leafminer. Apply every 5 to 10 days as needed. Do not make more than 7 applications per crop per season. Can be applied up to 1 day prior to harvest.

Melons: See Cucurbits.

Onions (Dry bulb and Garlic): Onion thrips, armyworm, cutworm, leafminer, onion maggot (adult), stink bug. Dust lightly. Apply up to 6 times per season. Can be applied up to 1 day prior to harvest.

Peaches: Peach twig borer, Oriental fruit moth, green fruitworm, lesser peachtree borer, plum curculio, tarnished plant bug. Dust lightly. Apply up to 5 times per season. Can be applied up to 14 days prior to harvest.

Potatoes: Beet armyworm, Colorado potato beetle, potato beetle, potato leafhopper, potato aphid, potato tuberworm, cabbage looper, cutworms, European corn borer, potato psyllid, tarnished plant bug. Apply to plants as needed. Do not make more than 12 applications per season. Can be applied up to 7 days prior to harvest.

Peppers: Vegetable leafminer, cabbage looper, flea beetle, corn earworm, pepper weevil, European corn borer. Apply to plants as needed. Do not make more than 8 applications per season. Can be applied up to 3 days prior to harvest.

Strawberries: Meadow spittlebugs, leafrollers. Apply to plants as needed to ensure uniform coverage. Can be applied up to 1 day prior to harvest.

Sweet Corn: Corn earworms, European corn borers, fall armyworms, southern armyworms. Apply to plants every 5 days. Do not make more than 6 applications per season. Can be applied up to 1 day prior to harvest.

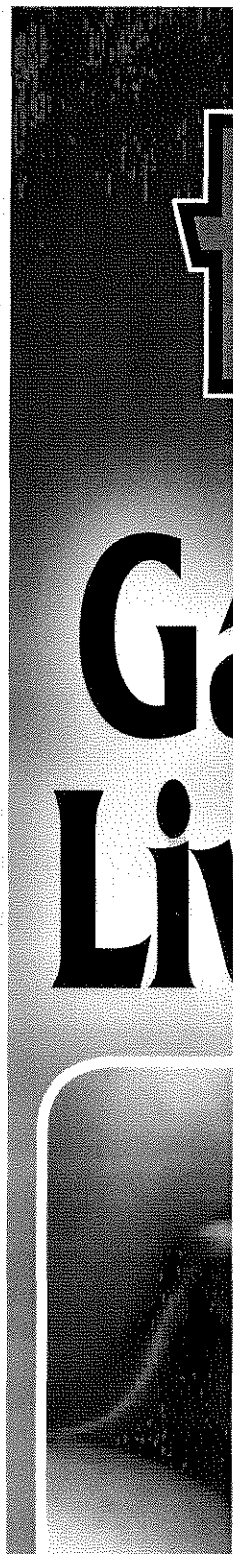
Tomatoes (Do not apply on cherry tomatoes and varieties yielding tomatoes less than one inch in diameter): Beet and southern armyworms, tomato pinworms, tomato fruitworms, hornworms, granulate cutworms, Colorado potato beetles, cabbage loopers. Apply to plants when needed for uniform coverage. Do not make more than 6 applications per season. Can be applied up to day of harvest.

Walnuts: Navel orangeworm, codling moth, walnut husk fly. Dust lightly. Apply up to 8 times per season. Can be applied up to 1 day prior to harvest.

DOGS AND CATS

USE ONLY ON DOGS OR CATS. Consult a veterinarian before using this product on debilitated, aged, pregnant, nursing or medicated animals.

To control (kill) **fleas, ticks and lice:** Use product only outside or in a well-ventilated area. Wearing household latex or rubber gloves, dust entire animal avoiding pet's eyes, nose, mouth and genital areas. Rub or brush pet's hair to work dust down to skin. Use ½ oz. on animals 20 pounds and under and 1 oz. on pets over 20 pounds. Repeat every three weeks. This product should not be applied by children. Do not use on pregnant animals. Do not use on puppies or kittens under 12 weeks of age. Dust pet bedding and doghouse using a



nursing or medicated animals.

To control (kill) **fleas, ticks and lice**: Use product only outside or in a well-ventilated area. Wearing household latex or rubber gloves, dust entire animal avoiding pet's eyes, nose, mouth and genital areas. Rub or brush pet's hair to work dust down to skin. Use 1/2 oz. on animals 20 pounds and under and 1 oz. on pets over 20 pounds. Repeat every three weeks. This product should not be applied by children. Do not use on pregnant animals. Do not use on puppies or kittens under 12 weeks of age. Dust pet bedding and doghouse using a shaker can or other dust applicator.

BEEF AND DAIRY CATTLE, HORSES, SWINE AND POULTRY

Can be used in dust bags, shaker can and mechanical dust applicator.

Horn Flies, Lice, Face Flies: Place contents of this package in any commercially available dust bag, suspend bag in areas frequented by cattle or in gateways or lanes through which the animals must pass daily for water, feed, or minerals. Bags may also be placed in loafing sheds or in front of mineral feeders. For dairy cows, bags may be suspended in the exit through which the cows leave the milking barn. The bags should hang 4 to 6 inches below the back line of the cattle. For reduction of Face Flies, bags must be located so animals will be forced to use them daily and hung at a height so that the face is dusted.

Horn Flies, Lice Direct Application: Apply 2 oz. of dust per animal by shaker can over the head, neck, shoulders, back and tailhead. Repeat as necessary.

Horses: Dust horse for horn flies with shaker can or dust glove along back, neck and legs.

Swine: Lice on Swine Direct Application: Apply only 1 ounce per head as a uniform coat to the head, shoulder and back by use of a shaker can or suitable mechanical dust applicator. Repeat as necessary but not more often than once every 10 days. In severe infestation, both animals and bedding may be treated. Do not ship animals for slaughter within 5 days of treatment.

Poultry: To control Northern Fowl Mites, apply at a rate of 1 lb. per 100 birds. Ensure thorough treatment of vent area.

STORAGE AND DISPOSAL

PESTICIDE STORAGE: Store in original container. Keep in an area inaccessible to children and pets.

PESTICIDE DISPOSAL: If empty: **Non-refillable container**. Do not reuse or refill this container. Place in trash or offer for recycling if Available. If partly filled: Call your local solid waste for disposal instructions. Never place unused product down any indoor or outdoor drain

Note: Buyer assumes all risks of use, storage or handling of this product not in strict accordance with directions given herewith. Voluntary Purchasing Groups, Inc. warrants this product to conform to the chemical description on the label and for the purposes stated on the label. The limit of any liability incurred shall be the purchase price paid by the user or buyer.

Released For Shipment By:
VOLUNTARY PURCHASING GROUPS, INC.
230 FM 87 • BONHAM, TEXAS 75418
EPA Reg. No. 7401-447
EPA Est. No. 7401-TX-1
Visit Us At: www.hi-yield.com



15M-8-89

- A Bro
- For Us
- Garde
- For Us
- Use O
- Ticks
- Effect
- Beetle
- And O

ACTIVE INGRED
Permethrin (3)
dichloroetheny
INERT INGREDIE
TOTAL
Cis/trans ratio: 1

NET WE

firm cover-
rvest.

re uniform

ations per

le-leaved
af), orach,
beet army-
overworm,
not make

stink bug.

, tarnished

tato tuber-
plants as
rest.

pean corn
died up to

erage. Can

. Apply to
day prior

diameter):
cutworms,
not make

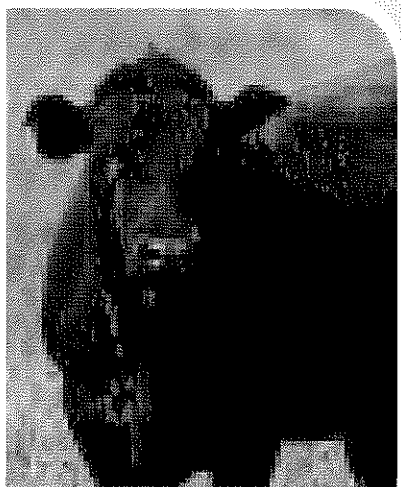
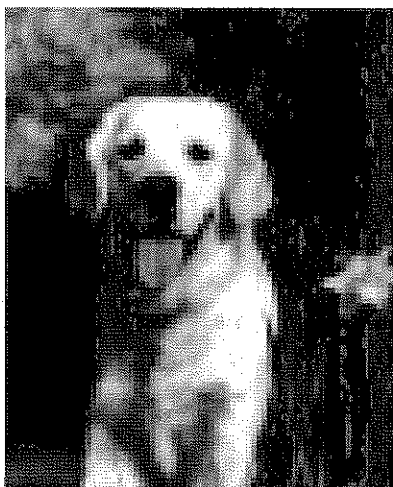
er season.

pregnant,

household
b or brush
ts over 20
pregnant
se using a

Hi-Yield®

Garden, Pet & Livestock Dust



Hur
tho
Ani
pre
pro
of v

To p
guti
24 l

It is

Not
pur

Orn
dus

To j
cut

Dus
con

leaf
the

ing
Eng

Pet
Rat

Pur

If ap
area

to c

Use
and

to i
pos
Rep
Orn
dis



- **A Broad-Use, Ready-To-Use Insecticide.**
- **For Use On Home Ornamental & Vegetable Gardens.**
- **For Use On Fruit And Nut Trees.**
- **Use On Dogs And Cats To Control Fleas, Ticks And Lice.**
- **Effectively Controls Cutworms, Japanese Beetles, Aphids, Squash Bugs, Armyworms And Others On Fruits and Vegetables.**

ACTIVE INGREDIENT:

*Permethrin: (3-phenoxyphenyl) methyl (+/-) *cis-trans*-3-(2,2-dichloroethenyl) 2,2-dimethyl cyclopropanecarboxylate..... 0.25%

INERT INGREDIENTS:..... 99.75%

TOTAL:..... 100.00%

* *Cis/trans* ratio: Max. 65% (+/-) *trans* and min. 35% (+/-) *cis*.

**KEEP OUT OF REACH
OF CHILDREN
CAUTION**

See side panels for additional precautionary statements.

READ ENTIRE LABEL BEFORE EACH USE.

NET WEIGHT 1 LB.

32201

household
brush
over 20
pregnant
use using a

Y

dust bag,
imals must
ont of min-
s leave the
eduction of
a height so

head, neck,

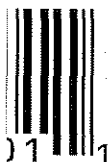
id, shoulder
ut not more
Do not ship

h-treatment

ts.

ace in trash
ions. Never

with direc-
ne chemical
shall be the



an
to
po
Re
Or
du
su
St
su
Re
Co
(ac
fol
Ch
Dc
m
Pe
Pl
Hc
bu
lov
ey
co
Ap
sp
As
Dc
As
be
Ce
Co
im
pri
cro
Co
Cu
Cu
ho
sq
me
no

PRECAUTIONARY STATEMENTS HAZARDS TO HUMAN AND DOMESTIC ANIMALS

CAUTION:

Humans: Harmful if swallowed, inhaled. Avoid breathing dust. Avoid contact with eyes and skin. Wash thoroughly with soap and water after handling. Avoid contamination of feed and foodstuffs.

Animals: Harmful if swallowed, inhaled. Consult a veterinarian before using this product on debilitated, aged, pregnant or nursing animals or animals on medication. Sensitivities may occur after using ANY pesticide product for pets. If signs of sensitivity occur, bathe your pet with mild soap and rinse with large quantities of water. If signs continue, consult a veterinarian immediately.

ENVIRONMENTAL HAZARDS

To protect the environment, do not allow pesticide to enter or run off into storm drains, drainage ditches, gutters or surface waters. Applying this product in calm weather when rain is not predicted for the next 24 hours will help to ensure that wind or rain does not blow or wash pesticide off the treatment area.

DIRECTIONS FOR USE

It is a violation of Federal Law to use this product in a manner inconsistent with its labeling.

Not for use on plants grown for sale or other commercial or for commercial seed production or research purposes.

Ornamental Plants — Indoors: Use a dust applicator such as a shaker can, dust gun, puffer or other bulbous duster, rotary duster or other appropriate duster available.

To protect plants in indoor landscaping — Apply directly on insects to control leafrollers, armyworms, cutworms and cabbageworms on chrysanthemums and fungus gnats on velvet plant.

Dust lightly to cover both upper and lower leaf surfaces with a thin, even film of dust to control aphids, armyworms, corn earworms, fall cankerworms, inchworms, Japanese beetles, leafminers, leafrollers, mealybugs, scale crawlers, spring cankerworms, and exposed thrips on the following plants: Ageratum, Ardisia, Aster, Azalea, Baby's Breath, Begonia, Birds-nest Fern, Bleeding Heart, Carnation, Chrysanthemum, Coleus, Crown of Thorns, Cockscomb, Dracaena, Dumbcane, English Ivy, Fuschia, Gladiolus, Grape Ivy, Hypoestes, Ivy, Juniper, Lily, Marigold, Palm, Pansy, Piperomia, Petunia, Philodendron, Piggy-back Plant, Poinsettia, Portulaca, Pothos, Prayer Plant, Purple Passion, Rabbits Foot Fern, Rose, Schefflera, Snapdragon, Snake Plant, Statice, Velvet Plant, Verbena, Piperomia, Purple Passion, and Zinnia.

If application is made indoors, remove infested plants from living area prior to application. Dust plants in an area not likely to be occupied by children or pets (particularly fish). When dust settles plants can be returned to original location.

Use with care on ferns, palms and fuschia. As with all plants listed especially carnations, chrysanthemums and roses, there exists a wide variety of species and cultivars, and therefore, a wide variety of susceptibility to injury. To ascertain possible phytotoxicity, dust a few plants as described, wait 24 hours and check for possible injury.

Repeat applications may be necessary to control adult Japanese beetles on roses.

Ornamental Plants — Outdoors: Use a dust applicator such as a shaker can, dust gun, puffer or other bulbous duster, rotary duster or other appropriate duster available. Dust lightly to cover both upper and lower leaf



and roses, there exists a wide variety of species and cultivars, and therefore, a wide variety of susceptibility to injury. To ascertain possible phytotoxicity, dust a few plants as described, wait 24 hours and check for possible injury.

Repeat applications may be necessary to control adult Japanese beetles on roses.

Ornamental Plants — Outdoors: Use a dust applicator such as a shaker can, dust gun, puffer or other bulbous duster, rotary duster or other appropriate duster available. Dust lightly to cover both upper and lower leaf surfaces with a thin, even film of dust. Apply when air is calm to avoid drift and contact with eyes and skin. Start applying at the farthest corner of the treatment area and work backward to avoid contact with dusted surfaces. Allow dust to settle in treated areas before reentering. Contact insects directly whenever possible. Repeat treatment as needed.

Controls aphids, cicadas, corn earworms, fall cankerworms, fall webworms, inchworms, Japanese beetles (adults), leafminers, leafrollers, mealybugs, bagworms, spider mites, whiteflies and exposed thrips on the following plants: African Violets, Ageratum, Arizona Cypress, Aster, Azalea, Begonia, Camellias, Carnations, Chrysanthemum, Coleus, Common Ninebark, Common Snowberry, Crassula, Dahlias, Delphinium, Dogwood, Exacum, Euonymus, English Ivy, Fuschia, Geranium, Gladiolus, Gold Bells, Grape Vines (ornamental), Hypoestes, Ivy, Laurel, Lilac, Marigold, Mock Orange, Nannyberry, Orchid, Palm, Pansy, Pea Shrub, Petunia, Philodendron, Poinsettia, Rhododendron, Rose, Snapdragon, Stocks, Taxus, Wandering Jew, Wax Plant, Weeping Fig, Zinnia.

Home Fruit & Vegetable Gardens: Use a dust applicator such as a shaker can, dust gun, puffer or other bulbous duster, rotary duster or other appropriate duster available. Dust lightly to cover both upper and lower leaf surfaces with a thin, even film of dust. Apply when air is calm to avoid drift and contact with eyes and skin. Start applying at the farthest corner of the treatment area and work backward to avoid contact with dusted surfaces. Allow dust to settle in treated areas before reentering.

FRUITS AND VEGETABLES

Apples: Apple aphid, redbanded leafroller, obliquebanded leafroller, plum curculio, white apple leafroller, spotted tentiform leafminer, tarnished plant bug. Dust lightly. Do not apply after petal fall.

Asparagus (pre-harvest): Cutworms, asparagus beetle. Apply to plants as needed to ensure uniform coverage. Do not make more than 4 applications per season. Can be applied up to 3 days prior to harvest.

Asparagus (post-harvest): Larval stages of asparagus beetle, tarnished plant bug, lygus bugs and adult Japanese beetles. Treat fern or bush growth after spear harvest when insects are present.

Celery: See leafy vegetables.

Cole Crops: Broccoli, Brussels Sprouts, Cabbage Cauliflower: Beet armyworm, diamond back moth, imported cabbageworm, cabbage aphid, cabbage looper. Apply every 5 days. Can be applied up to one day prior to harvest. Do not make more than 10 applications on cabbage and 8 applications on the other cole crops per season.

Corn: See sweet corn.

Cucurbits: Balsam pear (bitter melon), Chinese waxgourd (Chinese preserving melon), Citrus melon, Cucumber, Gherkin, Edible gourds, Melons — including hybrids such as cantaloupe, casaba, crenshaw, honeydew, honey balls, mango melon, muskmelon, and Persian melon, pumpkin, summer & winter squash. Watermelon: Aphids, cabbage looper, cucumber beetle (adults), cutworms, leafhoppers, leafminers, melonworm, pickleworm, plant bugs, squash bugs. Apply to plants as needed to ensure uniform coverage. Do not make more than 8 applications per crop season. Can be applied up to the day of harvest.

de.
etable

as,

ese
worms

OF REACH
LDREN
TION

32201