

Eight[®]
Insect Control

TRUSTED SINCE 1926
BONIDE[®]

Yard & Garden

Ready to spray

Kills over 100 different listed insects

**Use on lawns, trees, shrubs, flowers,
fruits, and vegetables**

Keeps working for up to 4 weeks

ACTIVE INGREDIENT:

Permethrin . . . (Cas No. 52645-53-1) . . . 2.50%

OTHER INGREDIENTS: 97.50%

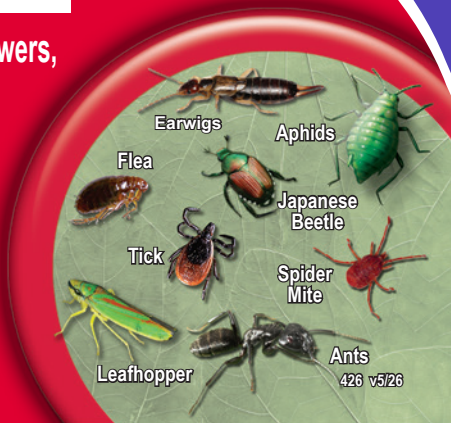
TOTAL: 100.00%

EPA Reg. No. 4-407 EPA Est. No. 4-NY-1

FOR RESIDENTIAL USE ONLY

Keep Out Of Reach Of Children

CAUTION (See back booklet for additional
Precautionary Statements and First Aid)
Net Contents 32 FL. OZ. (946 ML.)



TRUSTED SINCE 1926
BONIDE[®]

Eight[®]

Insect Control

Yard & Garden Ready to Spray

- ✓ Use on lawns, trees, shrubs, flowers, fruits, and vegetable
- ✓ Kills mosquitoes that may carry/transmit the Zika Virus
- ✓ Just connect to hose and spray
- ✓ Waterbased

Store and transport in an upright position.
EPA Reg. No. 4-407 EPA Est. No. 4-NY-1
Buyers Guarantee Limited to Label Claims.
©Bonide Products, LLC All Rights Reserved
Manufactured by: Bonide Products, LLC
6301 Sutliff Road, Oriskany, NY 13424

Quart #426 v05/26

BN



STOP! READ THE ENTIRE LABEL FIRST. OBSERVE ALL PRECAUTIONS AND FOLLOW DIRECTIONS CAREFULLY.

DIRECTIONS FOR USE

It is a violation of Federal law to use this product in a manner inconsistent with its labeling. Not for use on plants being grown for sale or for other commercial use, or for commercial seed production or for research purposes. For outdoor use only.

For Residential use only.

Use Restrictions

Do not allow adults, children, or pets to enter the treated area until sprays have dried. All outdoor spray applications must be limited to spot or crack-and-crevice treatments only, except for the following permitted uses:

- 1) Application to pervious surfaces such as soil, lawn, turf, and other vegetation;
- 2) Perimeter band treatments of 7 feet wide or less from the base of a man-made structure to pervious surfaces (e.g., soil, mulch or lawn);
- 3) Applications to vertical surfaces (such as the side of a man-made structure) directly above impervious surfaces (e.g., driveways, sidewalks, etc.), up to 2 feet above ground level;
- 4) Applications to vertical surfaces directly above pervious surfaces, such as soil, lawn, turf, mulch or other vegetation) only if the pervious surface does not drain into ditches, storm drains, gutters, or surface waters.

Do not make applications during rain. Avoid making applications when rainfall is expected before the product has sufficient time to dry (minimum 4 hours). Rainfall within 24 hours after application may cause unintended runoff of pesticide application. Do not apply when windspeed is greater than 15 mph.

Spot treatments must not exceed two square feet in size (e.g., 2 ft x 1 ft or 4 ft x 0.5 ft.)

Treat surfaces to ensure thorough coverage but avoid runoff. To treat insects harbored in voids and crack-and-crevices, applications must be made in such a manner to limit dripping and avoid runoff onto untreated structural surfaces and plants.

For soil or foliar applications, do not apply by ground within 25 feet of lakes, reservoirs, rivers, permanent streams, marshes or natural ponds, estuaries and commercial fish farm ponds. Do not apply the product into fish pools, ponds, streams, or lakes. Do not apply directly to sewers or storm drains, or to any area like a drain or gutter where drainage to sewers, storm drains, water bodies, or aquatic habitat can occur. Do not allow the product to enter any drain during or after application. Do not apply directly to impervious horizontal surfaces such as sidewalks, driveways, and patios except as a spot or crack-and-crevice treatment. Do not apply or irrigate to the point of runoff.

DIRECTIONS FOR USE CONT.



Do not allow to enter indoor or outdoor drains.

No permita la entrada a desagues internos o externos.

Not for use in outdoor residential misting systems.

SHAKE WELL BEFORE USING

HOSE END SPRAYER: EASY TO USE

1. Make sure knob Control lever is in the OFF position. Shake well and attach to hose.
2. Turn water on at faucet, aim nozzle toward lawn and turn knob Control lever to ON to begin spraying.
3. When finished turn Control lever to OFF position. Turn faucet to OFF position. Discharge residual water pressure by turning ON and OFF again.

Store out of reach of children.

Do not allow people and pets in treated areas until spray has dried.

APPLICATION INSTRUCTIONS

HOME LAWNS

	Pests:	How to Use:
Bent, Bermuda, Bluegrass, Dichondra, Fescue, Irish Moss, Merion, St. Augustine	Ants, Armyworms, Brown dog ticks, Chinch bugs, Clover mites, Crickets, Cutworms, Fleas, Grasshoppers, Japanese beetle grubs, Mole crickets, Sod webworms, Ticks that may carry Lyme Disease, Leafhoppers	Home lawns should be 3 inches or less in height at the time of application. 1 Quart of this concentrate as applied through the Hose-End Sprayer treats 5,000 sq. ft. For heavy infestations, repeat application after 2 weeks.

TREES & SHRUBS

	Pests:	How to Use:
Arizona Cypress, Azalea, Birch, Cherry, Non-Bearing Citrus, Conifers, Elm, English Ivy, Euonymous, Weeping Fig, Fir, Honeysuckle, Lilac, Mock-Orange, Oak, Palm, Philodendron, Pine, Poinsettia, Tulip Poplar, Rhododendron, Taxus	Aphids, Bagworms, Boxelder Bugs, Cicadas (Locust), Exposed thrips, Fall cankerworms, Inchworms, Leafminers, Leafrollers, Locust, Mealybugs, Spider mites, Stink Bugs, Whiteflies, Gypsy Moth, Tent Caterpillar, Japanese Beetles	Try to penetrate dense foliage. Spray in the late afternoon or evening, when the temperature ranges from 50° F to 75° F and when there is little or no wind. Spray at the first sign of insects. Repeat as necessary; use at intervals of 4-8 days. Application can be made up to the day of collection.
Cherry, Honeysuckle	Fall webworms	
Conifer	Budworms	
Elm	Elm Leaf Beetles, Elm Spanworms, Fall Webworms	
Douglas and Grand Firs	Tussock moths	
Non-bearing Citrus	Citrus black flies	
Oak	Oakworms	
Pine	Pine beetles, Pine moths, Pine needleminers, Needle scales	

On Tent caterpillars, application should be made when caterpillars are young and tents are first noticed. For best results, apply in the late afternoon or evening, when caterpillars have returned to their tents. Wet tents with spray on all sides. A few caterpillars may be seen escaping from the tent; however, they should die within several hours.

ROSES & FLOWERS

	Pests:	How to Use:
<p>Ageratum, Aster, Ardisia, Azalea, Baby's breath, Begonia, Birds-nest fern, Bleeding heart, Carnation, Chrysanthemum, Coleus, Common Ninebark and Snowberry, Crown of thorns, Cockscomb, Cyclamen, Dracaena, Dumbcane, English Ivy, Exacum, Fuchsia, Gladiolus, Grape Ivy, Gold Bells, Hypoestes, Ivy, Juniper, Lilac, Marigold, Mock-Orange, Nannyberry, Orchid, Palm, Pansy, Pea Shrub, Peperomia, Petunia, Philodendron, Piggy-back Plant, Poinsettia, Portulaca, Pothos, Prayer Plant, Purple Passion, Rabbits Foot fern, Rhododendron, Rose, Schefflera, Snapdragon, Snake Plant, Statice, Velvet Plant, Verbena, Zinnia</p>	<p>Aphids, Armyworms, Bagworms, Boxelder Bugs, Cabbage worms, Cicadas (Locust), Cornworms, Cutworms, Exposed thrips, Fall cankerworms, Fall webworms, Fungus gnats, Inchworms, Japanese beetles, Leafminers, Leafrollers, Locust, Mealybugs, Scale crawlers, Spring cankerworms, Spider mites, Whiteflies, Japanese Beetles, Rose Chafer, Psyllids, Scale Insects</p>	<p>Try to hit underside of leaves and penetrate dense foliage. Spray in the late afternoon or evening, when the temperature ranges from 50° F to 75° F and when there is little or no wind. Spray at the first sign of insects. Repeat as necessary; use intervals of 4-8 days. Application can be made up to the day of collection.</p>

FRUIT & NUT TREES

Apply when insects appear. Wet plants to the dripping point. Try to hit underside of leaves and penetrate dense foliage.

	Pests:	How to Use:
Almonds	Navel orangeworms, Peach twig borers	Do not make more than 2 applications during hull split and 5 applications per season. Can be applied up to 7 days prior to harvest.
Apples	Green fruitworms, Aphids, Leafrollers (Oblique-banded, Redbanded), Plum curculio, Rosy apple aphids, Spotted tentiform leafminers, Tarnished plant bugs, White apple leafhoppers, Japanese beetles	Repeat as required to maintain control. Do not make more than 3 applications. Do not apply after petal fall.
Peaches	Borers (Lesser peachtree, Peach twig), Green fruitworms, Plum curculio, Oriental fruit moths, Tarnished plant bugs	Do not apply within 7 days of harvest. Do not make more than 8 applications per season.
Pears (dormant through delayed dormant)	Pear psylla	Apply during the dormant through delayed dormant growth period only. Do not make more than 2 applications per season.
Pears (summer)	Codling Moths, Green fruitworms, Pear psylla, Aphids	Do not make more than 3 applications per season. Can be applied up to 14 days prior to harvest.

VEGETABLES

	Pests:	How to Use:
Asparagus (pre-harvest)	Asparagus beetles, Cutworms	Apply as needed to ensure uniform coverage. Do not make more than 4 applications per crop. Can be applied up to 3 days prior to harvest.
Asparagus (post-harvest)	Larval stages of asparagus beetle, Tarnished plant bug, Lygus bugs and Adult Japanese beetle	Treat ferns or bush growth after spear harvest when insects are present.
Celery - See Leafy Vegetables		
Cole Crops, Broccoli, Brussels Sprouts, Cabbage, Cauliflower	Beet armyworms, Cabbage Aphids and Loopers, Diamondback Moths, Imported cabbage worms	Apply every 5 days or as needed. Can be applied up to 1 day prior to harvest. Do not make more than 8 applications on Cauliflower, Brussels Sprouts and Broccoli and 10 applications on Cabbage.
Corn - see Sweet Corn		
Cucurbits: Balsam pear (bitter melon), Chinese waxgourd (Chinese preserving melon), citron melon, cucumber, gherkin, edible gourds: melons including hybrids such as cantaloupe, casaba, crenshaw, honeydew, honey balls, mango	Aphids, Cabbage looper, Cucumber beetle (adults), Cutworms, Leafhoppers, Leafminers, Melonworms, Pickleworm, Plant bugs, Squash bugs	Apply as needed to ensure uniform coverage. Can be applied up to the day of harvest.

	Pests:	How to Use:
melon, muskmelon, Persian melon, pumpkin, summer & winter squash, watermelon		
Eggplant	Colorado potato beetles, Vegetable leafminers	Apply as needed to ensure uniform coverage. Do not exceed 16 applications. Can be applied up to 3 days prior to harvest.
Horseradish (Foliar application)	Imported crucifer weevils	Apply as needed. Do not exceed 3 foliar applications. Can be applied up to 22 days prior to harvest.
<u>Leafy Vegetables:</u> Amaranth, Arugula, Celery, Celtuce, Chervil, Corn salad, Chrysanthemum (edible-leaved and garland), cress (garden and upland), Dandelion, Dock, Endive, Fennel, Lettuce (head and leaf), Parsley, Purslane (garden and winter), Rhubarb, Spinach, Swiss Chard	Alfalfa looper, Aphids, Beet armyworm, Cabbage looper, Corn earworm, Cutworms, European corn borer, Fall armyworm, Green cloverworm, Southern armyworm, Tobacco budworm, Vegetable leaf miner	Apply every 5 to 10 days as needed. Do not make more than 7 applications per crop. Can be applied up to one day prior to harvest.
Melons—see Cucurbits		

	Pests:	How to Use:
Peppers	Vegetable leafminers, Cabbage looper, Flea beetle, Corn earworm, Pepper weevil, European corn borer	Apply as needed, but not more than 8 applications per season. Can be applied up to 3 days prior to harvest.
Potatoes	Beet armyworm, Colorado potato beetle, Potato leafhopper, Potato tuberworm, Cabbage looper, Cutworms, European corn borer, Potato psyllid, Tarnished plant bug	Apply as needed. Do not make more than 12 applications. Can be applied up to 7 days prior to harvest.
Sweet Corn	Corn earworm, European corn borer, Fall armyworm, Southern armyworm	Apply every 5 days and when needed, but not more than 6 applications per season. Can be applied up to 1 day prior to harvest.
Tomatoes	Beet and southern armyworm, Tomato pinworm, Tomato fruitworm, Horn worms, Granulate cutworms, Colorado potato beetle, Cabbage looper	Apply as needed for uniform coverage. Can be applied up to day of harvest.

NUISANCE PESTS IN OUTDOOR AREAS

OUTSIDE SURFACES OF BUILDING

Use this product on Ants, Boxelder Bug, Clover mites, Crickets, Earwigs, Firebrats, Millipedes, Silverfish, Sowbugs (pillbugs), Springtails, and Stink bugs, to help prevent infestation of buildings, treat the building foundation to a height of 2 to 3 feet, where pests are active and may find entrance. Also, apply as a spot or crack-and-crevice treatment to outside surfaces of building, including porches, screens, window frames, eaves, patios, garages, refuse dumps and other areas where these pests congregate or have been seen. Apply until damp. Repeat treatment as needed to maintain effectiveness.

OTHER OUTDOOR AREAS

Use this product on Ants, Asian Lady Beetle, Boxelder Bug, Clover Mites, Crickets, Earwigs, Fleas, Locust, Springtails. Ticks (**including ticks that may carry Lyme Disease**) for treatment of localized infestations of these insects in areas where there are weeds or bushy non-crop areas, spray infested areas thoroughly. **For Ants**, thoroughly wet hills and runways. Repeat application as reinfestations occur. To reduce annoyance from: **Cluster Flies, Flying Moths, Gnats, House Flies, and Mosquitoes**. Spray outside surfaces of screens, doors, window frames or wherever these insects may enter the room. Also treat surfaces around light fixtures on porches, in garages, around shrubbery, and other places where these insects alight or congregate. Repeat as necessary.

STORAGE AND DISPOSAL

Pesticide Storage: Store and transport in an upright position. Store in a cool dry area inaccessible to children or pets.

Pesticide Disposal & Container Handling: *If empty* - Nonrefillable container. Do not reuse or refill this container. Place in trash or offer for recycling if available. *If partly filled* - do not pour or dispose down-the-drain or sewer. Call your local solid waste Agency for disposal options.

FIRST AID

Have the product container or label with you when calling a poison control center or doctor, or going for treatment. You may also contact SafetyCall® at 1-833-972-1101 for emergency medical treatment information.

If Swallowed:	<ul style="list-style-type: none">• Call a poison control center or doctor immediately for treatment advice.• Have person sip a glass of water if able to swallow.• Do not induce vomiting unless told to do so by the poison control center or doctor.• Do not give anything by mouth to an unconscious person.
----------------------	---

PRECAUTIONARY STATEMENTS HAZARDS TO HUMANS AND DOMESTIC ANIMALS

CAUTION: Harmful if swallowed. Wash thoroughly with soap and water after handling and before eating, drinking, chewing gum, using tobacco or using the toilet. Remove contaminated clothing and wash clothing before reuse.

ENVIRONMENTAL HAZARDS

This pesticide is extremely toxic to aquatic organisms, including fish and invertebrates. To protect the environment, do not allow pesticide to enter or run off into storm drains, drainage ditches, gutters or surface waters. Applying this product in calm weather when rain is not predicted for the next 24 hours will help to ensure that wind or rain does not blow or wash pesticide off the treatment area. Rinsing application equipment over the treated area will help avoid run off to water bodies or drainage systems. This product is highly toxic to bees exposed to direct treatment on blooming crops or weeds. Do not apply this product or allow it to drift to blooming crops or weeds while bees are foraging the treatment area.

NOTICE: To the extent consistent with applicable law, buyer assumes all responsibility for safety and use not in accordance with directions.

For Emergency Medical Treatment Information call SafetyCall® at 1-833-972-1102

For Spill, Leak, Fire or Accident Information call Chemtrec at 1-800-424-9300

TRUSTED SINCE 1926
BONIDE[®]

Eight[®]

Insect Control

Yard & Garden Ready to Spray

ACTIVE INGREDIENT: Permethrin (CAS #52645-53-1).....2.50%
OTHER INGREDIENTS:97.50%
TOTAL:.....100.00%

**KEEP OUT OF REACH OF CHILDREN
CAUTION**

See attached booklet for additional precautionary Statements and First Aid

PRECAUTIONARY STATEMENTS HAZARDS TO HUMANS AND DOMESTIC ANIMALS

CAUTION: Harmful if swallowed. Wash thoroughly with soap and water after handling and before eating, drinking, chewing gum, using tobacco or using the toilet. Remove contaminated clothing and wash clothing before reuse.

STORAGE AND DISPOSAL

Pesticide Storage: Store and transport in an upright position. Store in a cool dry area inaccessible to children or pets. **Pesticide Disposal & Container Handling:** *If empty* - Nonrefillable container. Do not reuse or refill this container. Place in trash or offer for recycling if available. *If partly filled* - Call your local solid waste agency for disposal instructions. Never place unused product down any indoor or outdoor drain.

Manufactured by:
Bonide Products, LLC
6301 Sutliff Road Oriskany, NY 13424
(800) 536-8231

EPA Reg. No. 4-407 EPA Est. No. 4-NY-1
©Bonide Products, LLC
All Rights Reserved
Quart #426 v05/26

Lift & Peel Here