

.5mm clear
2mm clear

282mm Slit Width

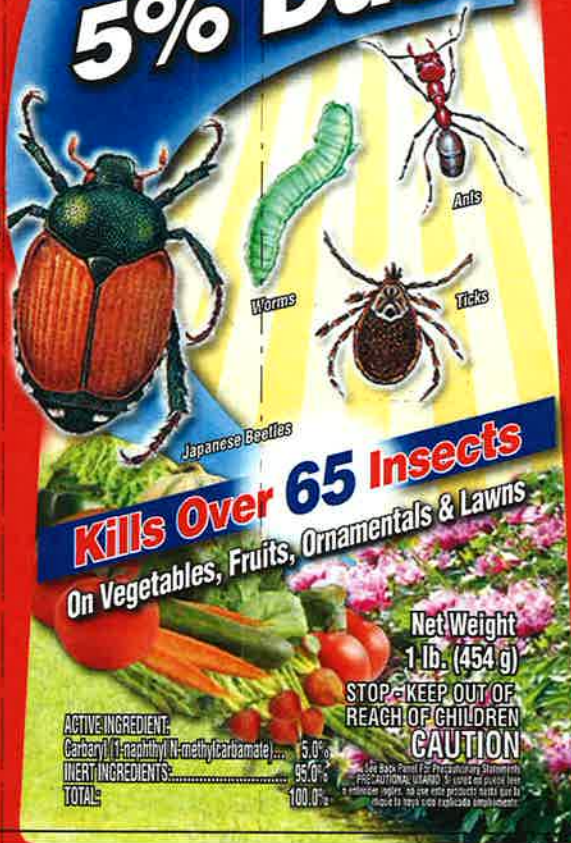
4mm clear

GARDENTECH

Sevin-5

Ready-To-Use 5% Dust

FOLD 1



Kills Over 65 Insects
On Vegetables, Fruits, Ornamentals & Lawns

Net Weight
1 lb. (454 g)

STOP - KEEP OUT OF REACH OF CHILDREN
CAUTION

ACTIVE INGREDIENT:
Carbaryl (1-maphthyl N-methylcarbamate) 5.0%
INERT INGREDIENTS: 95.0%
TOTAL: 100.0%

See Back Panel For Preharvest Interval
PRECAUTIONARY STATEMENT: See back panel for use instructions and precautions. For more information, visit us at www.gardentech.com

Distributed by: TeePac, L.L.C.,
2030 Powers Ferry Road, Ste 870
Atlanta, GA 30339

Sevin-5 is a registered trademark of
Tessenderlo Kelley, Inc.
Gardentech is a registered trademark
of Bellstream Home and Garden, Inc.
EPA Reg. No. 432-1209-71004
EPA Est. 67572-04-18, 67572-04-28
Support our need to test letter of non
code on container.
120210E

If you have a medical emergency, need consultation on diagnosis, therapy and analysis, please call 800-420-9347.
If you have questions relating to product use or application, please call 866-945-5033. If you have a product spill or
transportation emergency, please call 800-424-8300. For Material Safety Data Sheets, please call 866-945-5033.
Product of China. Contains U.S. and Imported Ingredients.

FOR OUTDOOR RESIDENTIAL USE ONLY

DIRECTIONS FOR USE
It is a violation of Federal law to use this product in a manner inconsistent with its labeling.

STORAGE AND DISPOSAL
Store pesticide in original container and place in a locked storage area.
DISPOSAL: If empty, Non-refillable container. Do not reuse or refill this container. Offer for recycling if available. Place in trash or offer for recycling if available.
IF PARTLY FILLED: Call your local solid waste agency or 866-945-5033 for disposal instructions. Never place unused product down any indoor or outdoor drain.

RESTRICTIONS: Do not apply this product in a way that will contact any person or pet, either directly or through drift. Keep people and pets out of the area during application. Do not allow people or pets to enter the treated area until dusts have settled.

NON-REFILLABLE CONTAINER. DO NOT CUT PACKAGE TO EXPOSE CONTENTS. Discard package when empty. Not for use on plants grown for sale or commercial use, research or commercial seed production.

PRECAUTIONS: Some phytotoxicity may occur on tender foliage in the presence of rain or high humidity of several days duration following application. Begin applications when insect or damage is first observed.

DIRECTIONS: Wearing household latex or rubber gloves, use this ready-to-use shaker container to apply product. Dust lightly to cover leaf surfaces with a thin, even film of dust. Apply when air is calm. Start applying at the farthest corner of the treatment area and work backward. For plants above chest height, consider using a liquid carbaryl product.

HOME GARDEN VEGETABLES AND SMALL FRUITS
Do not repeat applications more than once a week (7 days)

PREHARVEST USE RESTRICTIONS
Observe the following preharvest intervals (number of days between last application and harvest)

GARDEN CROP	PREHARVEST INTERVAL (DAYS)
Green beans (snap), radishes, rutabagas, turnips (roots), carrots, potato, blackberries, boysenberries, dewberries, loganberries, raspberries, blueberries, grapes and strawberries.	7
Cauliflow, garden beets (tops), kale, lettuce (head and leaf), mustard greens, spinach and turnip (tops).	14
Dried shelled legume beans and peas including: field bean, kidney bean, dry lima bean, navy bean, pinto bean, black-eyed pea, cowpea, crowder pea, mung bean, southern pea, lentil (dry).	21
Edible-podded legume vegetables including: snap bean, wax bean, yardlong bean, jack bean, adzuki-pod pea, mung pea, sugar snap pea, broccol, brussel sprouts, cabbage, cauliflower, kohlrabi, cantaloupe, cucumber, melon, pumpkin squash, eggplant, pepper and tomato.	3

VEGETABLES

CROP	INSECT PESTS	COMMENTS
Edible-podded legume vegetables including: Snap bean, wax bean, yardlong bean, jack bean, adzuki-pod pea, mung pea, sugar snap pea, broccol, brussel sprouts, cabbage, cauliflower, kohlrabi, cantaloupe, cucumber, melon, pumpkin squash, eggplant, pepper and tomato.	Bean leaf beetle, cucumber beetles, corn earworm, flea beetles, Japanese beetles, leafhoppers, Lima bean pod borer, lygus bug, Mexican bean beetle, stink bugs	Maximum number of applications per year: 4

FIRST AID

If Swallowed:
• Call poison control center or doctor immediately for treatment advice.
• Have person sip a glass of water if able to swallow.
• Do not induce vomiting unless told to do so by the poison control center or doctor.
• Do not give anything by mouth to an unconscious person.

If on Skin or Clothing:
• Take off contaminated clothing.
• Rinse skin immediately with plenty of water for 15-20 minutes.
• Call a poison control center or doctor for treatment advice.

NOTE TO PHYSICIAN

CARBARYL is an N-methyl carbamate insecticide which is a cholinesterase inhibitor. Specific antidote consists of atropine, naloxone and other sedatives should be used. Drugs like 2-PAM (pyridine-2-aldochrome methiodide) are NOT recommended.

ENVIRONMENTAL HAZARDS
This pesticide is extremely toxic to aquatic invertebrates. To protect the environment, do not allow pesticide to enter or run off into streams, ditches, drainage ditches, gutters or surface waters. Applying this product in rain weather when rain is not predicted for the next 24 hours will help to ensure that wind or rain does not blow or wash pesticide off the treatment area. **SEE CAUTION: MAY KILL HONEY BEES AND OTHER BEES.** This product is highly toxic to honey bees and other bees. Do not apply to plants in bloom.

WARNING: This product contains carbaryl, a chemical known to the State of California to cause cancer and reproductive harm in laboratory animals.

SMALL FRUIT		
PLANT	INSECT PESTS	COMMENTS
Blackberries, boysenberries, strawberries, loganberries, dewberries, raspberries	Japanese beetles, leafhoppers, leafrollers, raspberry cranid	Maximum number of applications per year: 5
Blueberries	Blueberry maggot, cherry fruitworms, cranberry fruitworms, Japanese beetles	Apply 3 weeks before harvest and repeat 10 days later if necessary. Maximum number of applications per year: 5
Grapes	Grape berry moth, grape leafhopper, grape leafhopper, grape leaf skeletonizer, Japanese beetle, June beetle, red-tailed katydid	Apply just before first brood leafhopper larvae emerge from rolls and as needed for leafhoppers. Maximum number of applications per year: 5
Strawberries	Meadow spittlebug, strawberry leafroller, strawberry weevil	Maximum number of applications per year: 5

ORNAMENTAL SHRUBS AND FLOWERS

For outdoor use only. To kill bagworm, blister beetles, borer, boxwood leafminer, flea beetle, Japanese beetle, leafhopper, leafrollers, periodical cicada, plant bugs, psyllids, rose aphid, rose slug, scale insects on the crawler stage, treet caterpillars and reported thrips, apply thoroughly to the infested plants at the first sign of damage. Do not repeat application more than once weekly or more than 5 times per year. For best results on scale, apply in spring and early summer when scale crawlers are present.

HOME LAWNS

To kill earwigs, fall armyworm, leafhoppers, millipedes, soil webworm, and sowbugs, sprinkle lightly on grass. To kill ants (except pharaoh and carpenter ants), chiggers, fleas, spiders (except brown and black widow) and ticks, sprinkle lightly on grass. Will only kill pests present at the time of application. Must not be directly contacted by product to be effective. For best results, apply after rain or watering and do not water for at least 2 days after application. Repeat treatment as needed but not more than every 2 weeks and not more than four times per year.

EARWIGS

This material is effective in killing earwigs and when properly used will reduce the number gaining entrance to homes. Using this ready-to-use shaker container, lightly dust a band 3 to 4 inches wide around the outside foundation wall of the home. Sprays treated over wide areas around yards and fields and are driven by cold weather to seek shelter in warm buildings. As they move along the foundation wall seeking entrance, they come into contact with the treated barrier and are killed. Be sure to treat in front of all steps and other entrance ways as well as along the foundation wall. Apply also around refuse piles, lumber, mulch and other areas in the yard offering areas of concealment to earwigs. Repeat application on 10 days or when earwigs become troublesome. If the dust barrier is washed away by rain, it should be replaced with a new application if earwigs are still a problem.

This container is sold by weight, NOT by volume. You can be assured of the proper weight even though some settling of contents normally occurs during transportation and handling.

Important: Read the entire Directions before using this product. Disclaimer: Manufacturer warrants that this product conforms to the chemical description on the label and is (where applicable) for the specific purposes intended to in the Directions for Use. To the extent consistent with applicable law, manufacturer makes no other express or implied warranty of fitness or merchantability nor any other express or implied warranty. To the extent consistent with applicable law, in no case shall Manufacturer be liable for consequential, special or indirect damages resulting from the use, handling or application of this product.

PRECAUTIONARY STATEMENTS: Harmful if swallowed. Harmful if absorbed through skin. Avoid contact with eyes, skin or clothing. Wash thoroughly with soap and water after handling and before eating, drinking, chewing gum, or using tobacco. Remove contaminated clothing before reuse.

CAUTION:

FIRST AID
If Swallowed:
• Call poison control center or doctor immediately for treatment advice.
• Have person sip a glass of water if able to swallow.
• Do not induce vomiting unless told to do so by the poison control center or doctor.
• Do not give anything by mouth to an unconscious person.

If on Skin or Clothing:
• Take off contaminated clothing.
• Rinse skin immediately with plenty of water for 15-20 minutes.
• Call a poison control center or doctor for treatment advice.

Have the product container or label with you when calling a poison control center or doctor, or going for treatment. You may also contact 1-800-420-9347 for emergency treatment information.

NOTE TO PHYSICIAN CARBARYL is an N-methyl carbamate insecticide which is a cholinesterase inhibitor. Specific antidote consists of atropine, naloxone and other sedatives should be used. Drugs like 2-PAM (pyridine-2-aldochrome methiodide) are NOT recommended.

ENVIRONMENTAL HAZARDS
This pesticide is extremely toxic to aquatic invertebrates. To protect the environment, do not allow pesticide to enter or run off into streams, ditches, drainage ditches, gutters or surface waters. Applying this product in rain weather when rain is not predicted for the next 24 hours will help to ensure that wind or rain does not blow or wash pesticide off the treatment area. **SEE CAUTION: MAY KILL HONEY BEES AND OTHER BEES.** This product is highly toxic to honey bees and other bees. Do not apply to plants in bloom.

WARNING: This product contains carbaryl, a chemical known to the State of California to cause cancer and reproductive harm in laboratory animals.

129mm Long Fold

2mm clear

15.5mm Short Fold

137.5mm Lay Flat

(Production LF 137.5mm ±0.5mm/-0.5mm)
(Customer LF 137.5mm ±0.5mm/-0.5mm)

6mm copy free zone. Graphics OK

6mm copy free zone. Graphics OK

6mm copy free zone. Graphics OK

203mm Cut Length