

# INFUSE™

TRUSTED SINCE 1926

**BONIDE®**

systemic  
disease control



*Absorbed into the plant*

**Prevents and stops major diseases on  
roses, flowers, lawns, trees and shrubs**  
**Works for up to 4 weeks on  
certain diseases**

**ACTIVE INGREDIENT:**

Propiconazole . . (CAS No. 60207-90-1)..... 1.55%

**OTHER INGREDIENTS:**.....98.45%

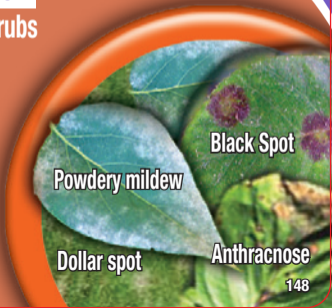
**TOTAL**..... 100.00%

EPA Est. No. 4-NY-1      EPA Reg. No. 100-773-4

**Keep Out Of Reach Of Children**

**WARNING** (Si usted no entiende la etiqueta, busque a alguien para que se la explique a usted en detalle. (If you do not understand the label, find someone to explain it to you in detail.)

**Net Contents 16 FL OZ (473 ML)**



# INFUSE SYSTEMIC DISEASE CONTROL

- ✓ Prevents and stops major diseases on roses, flowers, lawns, trees and shrubs
- ✓ Absorbed into the plant - Can't be washed off by rain or sprinklers after spray has dried
- ✓ Prevents and stops... black spot, dollar spot, rust, brown patch, powdery mildew, leaf spot, and more!

Store and transport in an upright position.

EPA Est. No. 4-NY-1 EPA Reg. No. 100-773-4

Buyers Guarantee Limited to Label Claims.

©Bonide Products, LLC All Rights Reserved

Distributed by:

Bonide Products, LLC

6301 Sutliff Road

Oriskany, NY 13424

Pint

BN



## DIRECTIONS FOR USE

It is a violation of Federal law to use this product in a manner inconsistent with its labeling.

**STOP. READ ALL INSTRUCTIONS INSIDE BEFORE USE.**

**FAILURE TO FOLLOW THE DIRECTIONS FOR USE AND PRECAUTIONS ON THIS LABEL MAY RESULT IN POOR DISEASE CONTROL OR INJURY TO DESIRABLE PLANTS.**

### **Use Restrictions**

Do not apply this product in a way that will contact adults, children, or pets, either directly or through drift.

Do not allow adults, children, or pets to enter treated area until sprays have dried.

## PRODUCT INFORMATION

This water-based systemic fungicide effectively prevents and stops major diseases on roses, flowers, lawns, trees and shrubs.

### **USE TIPS:**

- This product is highly effective when it is used to prevent diseases or applied at the first sign of disease. Consider treating early in the season. This product will not eliminate disease already present.
- When used as directed, this product is safe to plants and controls the diseases listed. Plants not listed may be injured by this product and diseases not listed may not be controlled.
- Do not apply this product to African Violets, begonias, Boston ferns, or geraniums.
- If you need more information about lawn and ornamentals diseases, contact your local County Extension Service.

## MIXING PROCEDURES

Shake well before using. Apply only with a pump-up pressure sprayer, concentrate plus water-style, or a hose-end sprayer.

**NOTE:** ½ fl. oz. = 1 Tablespoon    1 fl. oz. = 2 Tablespoons

Food utensils, such as measuring cups and spoons, must not be used for food purposes after use in measuring pesticides.

## PUMP-UP SPRAYER

1. Fill with required amount of water.
2. Add the amount of concentrate specified in the charts that follow.
3. Shake well before application.

## CONCENTRATE PLUS WATER STYLE SPRAYER

1. From the following chart, determine the amount of concentrate required.
2. Pour concentrate into sprayer jar to the required "fl. oz." level.
3. Then add the required amount of water to the "gals." level.
4. Replace sprayer top on jar and shake well before spraying.

## DIAL-STYLE HOSE-END SPRAYER

1. Set sprayer on the "fl. oz./gallon" level specified in the following chart.
2. Use only enough product for the area to be treated.
3. Close sprayer, attach to hose and apply product to lawn.  
(For example: To treat a 1,000 sq. ft. lawn for powdery mildew, pour 12 fl. oz. into sprayer jar. Set sprayer dial at 3 fl. oz. per gallon.)

## APPLICATION INSTRUCTIONS

### ROSES AND FLOWERS

#### Use Directions

1. Apply product to the point just when it begins to run off of the leaves.
2. Allow spray to completely dry before watering.

Plant	Disease	Amount of Product	Comments
Roses	Powdery Mildew	1 Tablespoon ( $\frac{1}{2}$ fl. oz.) per gal. of water	Thorough coverage needed for best results. Begin application at bud break. Treat every 10 days.
	Black Spot, Rust	2 Tablespoons (1 fl. oz.) per gal. of water	Treat every 10 days. <b>Note:</b> May not provide 100% control of black spot under severe conditions.
Calendula	Powdery Mildew	1 Tablespoon ( $\frac{1}{2}$ fl. oz.) per gal. of water	Apply every 30 days.
Carnation, Iris	Rust	1 Tablespoon ( $\frac{1}{2}$ fl. oz.) per gal. of water	Apply every 10 - 14 days.
Chrysanthemums	Ray Blight	2 Tablespoons (1 fl. oz.) per gal. of water	Apply every 7 days.
Delphinium	Powdery Mildew	1 Tablespoon ( $\frac{1}{2}$ fl. oz.) per gal. of water	Apply every 14 days.
Marigold	Leaf Blight, Leaf Spots	2 Tablespoons (1 fl. oz.) per gal. of water	Apply every 14 days.

Plant	Disease	Amount of Product	Comments
Phlox, Zinnia	Powdery Mildew	1 Tablespoon (½ fl. oz.) per gal. of water	Apply every 10 - 14 days.
Snapdragons	Rust	2 Tablespoons (1 fl. oz.) per gal. of water	Apply every 10 days.
Sweet William	Leafspot	1 Tablespoon (½ fl. oz.) per gal. of water	Apply every 14 days.

### LAWNS

#### Use Directions

1. Apply after mowing or allow sprayed area to completely dry before mowing.
2. Measure the length and width of area to be treated before application.  
Length x width = square feet. For example, an area 25 ft. long and 20 ft. wide is 500 sq. ft.

### ESTABLISHED LAWNS

Disease	Amount of Product	Comments
Brown Patch	5 fl. oz. in 1 gal. of water per 250 sq. ft. of lawn	If needed, repeat treatment every 10 days. First application should be in May or June before disease is present.
Dollar Spot, Powdery Mildew, Rust, Anthracnose	3 fl. oz. in 1 gal. of water per 250 sq. ft. of lawn	Apply every 14 days.
Fusarium Patch	5 fl. oz. in 1 gal. of water per 250 sq. ft. of lawn	If needed, repeat every 21 days when conditions are favorable for disease to occur.
Necrotic Ring Spot	9 fl. oz. in 1 gal. of water per 250 sq. ft. of lawn	Apply in the Fall and/or the early spring.
Red Thread, Pink Patch, Dichondra Rust on Dichondra Lawns	5 fl. oz. in 1 gal. of water per 250 sq. ft. of lawn	If needed, repeat every 21 days when conditions are favorable for disease to occur.

<b>Disease</b>	<b>Amount of Product</b>	<b>Comments</b>
Snowmold (Gray or Pink)	5 fl. oz. in 1 gal. of water per 250 sq. ft. of lawn	Apply twice in the Fall prior to snow cover waiting 14 days between each application.
Spring Dead Spot	9 fl. oz. in 1 gal. of water per 250 sq. ft. of lawn	Apply when conditions are favorable for disease development.
Stripe Smut	3 fl oz. in 1 gal. of water per 250 sq. ft. of lawn	Apply in Fall after grass is dormant or in early Spring before grass starts to grow.
Take-All Patch	5 fl. oz. in 1 gal. of water per 250 sq. ft. of lawn	Apply twice in the Fall (Sept. and Oct.) and twice in the Spring (April and May). Southern lawns also need to be treated twice in the summer (June-August).
Zoysia Patch	5 fl. oz. in 1 gal. of water per 250 sq. ft. of lawn	Make one application in the early Fall prior to development of disease symptoms.

### **NEW SEEDINGS**

<b>Amount of Product</b>	<b>Comments</b>
5 fl. oz. in 2 gals. of water per 500 sq. ft. of lawn	Apply at the 2 to 3-leaf stage of growth for faster root development and top growth.

### **TREES AND SHRUBS**

#### **Use Directions**

1. Spray just until product runs off leaves.
2. Allow the spray to dry before watering plants.

Plant	Disease	Amount of Product	Comments
Ash	Powdery Mildew	3 Tablespoons (1 ½ fl. oz.) per gal. of water	Apply every 21 days.
Azalea	Flower blight	½ Tablespoon (¼ fl. oz.) per gal. of water	Apply when there is a 5% bloom and again at 70% bloom.
Crab Apple <b>Note:</b> Do not use fruit from treated crab apples for food purposes.	Scab, Rust	½ Tablespoon (¼ fl. oz.) per gal. of water	Apply when buds just begin to break open. For scab, apply every 14 days. For rust, make 3 applications, beginning when buds just begin to break open. Apply at 7 day intervals.
	Powdery Mildew	1 ½ Tablespoons (¾ fl. oz.) per gal. of water	Apply every 14 days.
Crape Myrtle	Powdery Mildew	3 Tablespoons (1½ fl. oz.) per gal. of water	Apply every 21 days.
Dogwood	Anthracnose	1 Tablespoon (½ fl. oz.) per gal. of water	Apply every 14 - 28 days.
Douglas Fir, Shasta Fir	Needle Rust	3 Tablespoons (1½ fl. oz.) per gal. of water	For Douglas Fir, apply every 21 days. For Shasta Fir, apply in May-June before disease occurs.
Hawthorne, Poplars	Rust	½ Tablespoon (¼ fl. oz.) per gal. of water	Apply every 14 to 21 days.
Jeffrey Pine	Tip Blight	3 Tablespoons (1½ fl. oz.) per gal. of water	Make the first application in mid-late winter (Nov.-Jan.) Apply every 2 months up to 3 times.



Plant	Disease	Amount of Product	Comments
Juniper	Blight	1 Tablespoon ( $\frac{1}{2}$ fl. oz.) per gal. of water	Apply every 14 to 21 days.
Lilac	Powdery Mildew	3 Tablespoons (1 $\frac{1}{2}$ fl. oz.) per gal. of water	Apply every 21 days.
Oak, Red Tip Photinia	Leaf Spot	3 Tablespoons (1 $\frac{1}{2}$ fl. oz.) per gal. of water	Apply every 14 days.
Pines	Conifer Blights	3 Tablespoons (1 $\frac{1}{2}$ fl. oz.) per gal. of water	Apply every 14 to 21 days.
Pyracantha	Leaf Spot	$\frac{1}{2}$ Tablespoon ( $\frac{1}{4}$ fl. oz.) per gal. of water	Apply every 14 to 21 days.
Rhododendron	Flower Blight	$\frac{1}{2}$ Tablespoon ( $\frac{1}{4}$ fl. oz.) per gal. of water	Apply when there is a 5% bloom and again at 70% bloom.

## NON-BEARING FRUIT AND NUT TREES

### Use Directions

1. Non-bearing fruit and nut trees are those trees that will not produce fruit for at least one year after application of this product.
2. Apply product to the point just when it begins to run off of the leaves.

Plant	Disease	Amount of Product	Comments
Apple	Scab	½ Tablespoon (¼ fl. oz.) per gal. of water	Start applications when leaves start growing in the Spring and spray every 14 days.
	Rust	½ Tablespoon (¼ fl. oz.) per gal. of water	Make 3 applications beginning when buds just begin to break open. Apply at 7-day intervals.
	Powdery Mildew	1 Tablespoon (½ fl. oz.) per gal. of water	Start applications in early Spring and spray every 14 days.
Citrus	Greasy Spot	4 Tablespoons (2 fl. oz.) per gal. of water	Apply June-August every 21 days.
Pecan	Scab, Powdery Mildew, Downy Spot, Zonate Leaf Spot, Fungal Leaf Scorch, Brown Spot	2 Tablespoons (1 fl. oz.) per gal. of water	Start applications at bud break and make 3 applications at 14-day intervals.
Walnut	Anthracoese	2 Tablespoons (1 fl. oz.) per gal. of water	Apply every 14 days.

## BEARING FRUIT AND NUT TREES

Plant	Disease	Amount of Product	Comments
Apricots, Cherries, Nectarines, Peaches, Plums and Prunes  Do not apply to "Stanley" type plums.	Brown Rot Blossom blight, Powdery Mildew, Cherry Leaf Spot and Fruit Brown rot	2 Tablespoon (1 fl. oz.) per gal. of water	Start applications in early Spring and spray every 21 days, making no more than 4 applications.

## STORAGE AND DISPOSAL

Do not contaminate water, food, or feed by storage or disposal.

**Pesticide Storage:** Store in a cool, dry place away from heat or open flame.

**Pesticide Disposal and Container Handling:** *If empty:* Non-refillable container. Do not reuse or refill this container. Place in trash or offer for recycling if available.

*If partly filled:* Call your local solid waste agency for disposal instructions. Never place unused product down any indoor or outdoor drain.

### FIRST AID

<b>If swallowed</b>	<ul style="list-style-type: none"><li>• Call a poison control center or doctor immediately for treatment advice.</li><li>• Have person sip a glass of water if able to swallow.</li><li>• Do not induce vomiting unless told to do so by the poison control center or doctor.</li><li>• Do not give anything by mouth to an unconscious person.</li></ul>
<b>If on skin or clothing</b>	<ul style="list-style-type: none"><li>• Take off contaminated clothing.</li><li>• Rinse skin immediately with plenty of water for 15-20 minutes.</li><li>• Call a poison control center or doctor for treatment advice.</li></ul>
<b>If inhaled</b>	<ul style="list-style-type: none"><li>• Move person to fresh air.</li><li>• If person is not breathing, call 911 or an ambulance, then give artificial respiration, preferably by mouth-to-mouth, if possible.</li><li>• Call a poison control center or doctor for further treatment advice.</li></ul>
<b>If in eyes</b>	<ul style="list-style-type: none"><li>• Hold eye open and rinse slowly and gently with water for 15-20 minutes.</li><li>• Remove contact lenses, if present, after the first 5 minutes, then continue rinsing eye.</li><li>• Call a poison control center or doctor for treatment advice.</li></ul>

Have the product container or label with you when calling a poison control center or doctor, or going for treatment.

### HOT LINE NUMBER

For 24-Hour Medical Emergency Assistance (Human or Animal) or chemical Emergency Assistance ( Spill, Leak, Fire, or Accident), Call 1-800-858-7378.

**Precautionary Statements  
Hazards to Humans and Domestic Animals**

**WARNING/AVISO**

Causes substantial but temporary eye injury. Do not get in eyes, on skin or on clothing. Harmful if swallowed, absorbed through skin, or inhaled. Avoid breathing vapor or spray mist. Wash thoroughly with soap and water after handling and before eating, drinking, chewing gum, using tobacco, or using the toilet. Remove and wash contaminated clothing before reuse.

**Environmental Hazards**

This pesticide is toxic to fish and shrimp. Do not apply directly to water. Do not contaminate water when cleaning equipment or disposing of equipment wash waters or rinsate. Drift and runoff may be hazardous to aquatic organisms in water adjacent to treated areas.

NOTICE: To the extent consistent with applicable law, buyer assumes all responsibility for safety and use not in accordance with label directions.

For information on pesticide products (including health concerns, medical emergencies, or pesticide incidents), call the National Pesticide Information Center at 1-800-858-7378.