

**Shake well before each use****DIRECTIONS FOR USE**

It is a violation of federal law to use this product in a manner inconsistent with its labeling.

**READ ALL DIRECTIONS COMPLETELY BEFORE USE.** This product is intended to use around residential structures to keep ants from entering the structure. The product will deliver a stream of product 10 to 15 feet long to help you treat hard-to-reach areas around the house. Direct your application to areas that ants and other insects use as common entry points and foraging trails. This product is especially useful outside in early spring when ants emerge and attempt to enter the house. Use it again in the fall when ants may attempt to come inside for the winter.

**SHAKE WELL BEFORE EACH USE.** HOLD CONTAINER UPRIGHT. APPLY IN SHORT BURSTS and always use the enclosed red extension tube to direct the application. A spare red extension tube is included with each can. For best results, follow directions for specific insects and use areas. **This product is designed for outdoor use.** Do not use on animals. Any liquid product may adversely affect some building materials. Always test in an inconspicuous area prior to widespread use.

**DO NOT CONTAMINATE FOOD AREAS.** Do not allow adults, children or pets to enter the treated area until sprays have dried. Do not apply this product in a way that will contact adults, children, or pets, either directly or through drift. Do not water the treated area to the point of run-off. Do not make applications during rain. All outdoor applications must be limited to spot or crack-and-crevice treatments only, except for the following permitted uses: 1. Treatment to soil or vegetation around structures; 2. Applications to lawns, turfs, and other vegetations; 3. Applications to building foundations, up to a maximum height of 3 feet. Other than applications to building foundations, all outdoor applications to impervious surfaces such as sidewalks, driveways, patios, porches and structural surfaces (such as windows, doors, and eaves) are limited to spot and crack-and-crevice applications, only. Application is prohibited directly into sewers or drains, or to any area like a gutter where drainage to sewers, storm drains, water bodies, or aquatic habitat can occur. Do not allow the product to enter any drain during or after application.

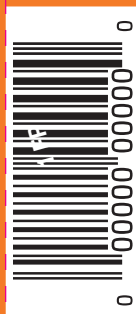
**OUTDOOR USE:** Spray with caution when wind conditions may create a mist that may blow back to applicator. Always attempt to use the attached red extension tube or the spare. When engaged, spray will shoot out a stream 10 to 15 feet long. The liquid will expand upon hitting a target surface and then leave an invisible residual deposit to kill ants. Look for ant activity around the outside of the house and spray the outdoor surface areas contacting as many insects as possible. Do not apply this product in or around bodies of water.

**ANTS:** Focus your treatment in key areas outside the house, where you suspect ants are entering the structure, such as around downspouts and gutters, near window sills and door openings. Spray ants directly where possible. Seal up any visible exterior cracks where ants can be seen entering the home. Spray ant trails, hills, ant mounds and other areas of entry and infestation.

**CARPENTER ANTS:** Carpenter ants usually come from an outside colony and enter your house looking to establish a satellite colony in an area containing water damaged wood. Carpenter ants are easy to identify because they are larger than all other pest ants. Often you will find them living in wood that has been in contact with water such as around downspouts and gutters, near window sills and door openings, close to leaking water pipes, or around decks. Carpenter ants are most active between dusk and dawn. Locate their outside trails during this time. Carpenter ants follow distinct trails such as edges of landscape timbers, along the ground close to outside walls, near downspouts or along the edge of an outside wall. After a careful inspection around the outside of the house, apply this product to all areas where you suspect ants are entering the home. Seal any visible exterior cracks where ants can be seen entering the home. If ants are discovered inside the home, use a suitable Terro® indoor ant control product to treat indoors. If you find the main colony outside in the yard, treat areas where ants are seen entering the main colony.

**SPIDERS:** Spray directly on spiders and webs.

**CRAWLING INSECTS: Cockroaches, Boxelder Bugs, Crickets, Sowbugs, Multicolored Asian Lady Beetles.** Focus your treatment in key areas outside the house where you suspect these insects are entering the structure, such as around downspouts and gutters, near windowsills and door openings. Spray insects directly where possible. Seal up any visible exterior cracks where crawling insects can be seen entering the home.



Manufactured for:  
**Senoret Chemical Co., Inc.**  
69 North Locust Street  
Littitz, PA 17543 USA  
1-800-800-1819

EPA Reg. No. 1021-1808-149  
EPA Est. No. 33595-MO-2a, 33595-MO-3b,  
33595-MO-4c, 11623-GA-2d  
Est. No. subscript is first letter of batch code  
on bottom of container.

Model No.: T1700  
BOT-P1700-4  
REV-071817

**STORAGE AND DISPOSAL**

Do not contaminate water, food, or feed by storage and disposal. **PESTICIDE STORAGE:** Store in a cool, dry area. Always store pesticides in the original container. Store away from food and pet food. **PESTICIDE DISPOSAL AND CONTAINER HANDLING:** Do not puncture or incinerate! Nonrefillable container. Do not reuse or refill this container. **If empty:** Place in trash or offer for recycling if available. **If partly filled:** Call your local solid waste agency for disposal instructions.

**PRECAUTIONARY STATEMENTS****HAZARDS TO HUMANS AND DOMESTIC ANIMALS**

**CAUTION:** Harmful if swallowed or absorbed through skin. Avoid contact with skin, eyes, or clothing. Wash thoroughly with soap and water after handling and before eating, drinking, chewing gum or using tobacco. Remove and wash contaminated clothing before reuse.

**FIRST AID: IF ON SKIN OR CLOTHING:** Take off contaminated clothing. Rinse skin immediately with plenty of water for 15 – 20 minutes. Call a poison control center or doctor for treatment advice. **IF SWALLOWED:** Immediately call a poison control center or doctor. Do not induce vomiting unless told to do so by a poison control center or doctor. Do not give any liquid to the person. Do not give anything by mouth to an unconscious person. Have the product container or label with you when calling a poison control center or doctor or going for treatment. For information regarding medical emergencies or pesticide incidents, call 1-888-740-8712.

**ENVIRONMENTAL HAZARDS:** This product is extremely toxic to aquatic organisms, including fish and invertebrates. Do not apply directly to or near water. Drift and run-off may be hazardous to fish in water adjacent to treated areas. Do not contaminate water when disposing of equipment, washwater, or rinsate. See Directions for Use for additional precautions and requirements. This pesticide is highly toxic to bees exposed to direct treatment on blooming crops or weeds. Do not apply this product or allow it to drift to blooming crops or weeds while bees are actively visiting the treatment area.

**PHYSICAL OR CHEMICAL HAZARDS: Contents under pressure.** Do not use or store near heat or open flame. Do not puncture or incinerate container. Exposure to temperatures above 130° F may cause bursting. Do not use this product in or on electrical equipment due to possibility of shock hazard.

**Agite bien antes de usar****ALMACENAMIENTO Y ELIMINACIÓN**

No contamine el agua, los alimentos o alimentos para animales al almacenarlo o desecharlo. **ALMACENAMIENTO DEL PESTICIDA:** Almacene en un área fresca y seca. Siempre guarde los pesticidas en el envase original. Almacene lejos de los alimentos y alimento para mascotas. **ELIMINACIÓN DEL PESTICIDA Y MANIPULACIÓN DEL ENVASE:** No perforo ni incinere el envase! El envase no se puede rellenar. No vuelva a usar ni llenar este envase. **Si está vacío:** Colóquelo en la basura o, si está disponible, ofrézcalo para reciclaje. **Si está parcialmente lleno:** Llame a su agencia local de desechos sólidos para obtener instrucciones sobre cómo desechar el producto.

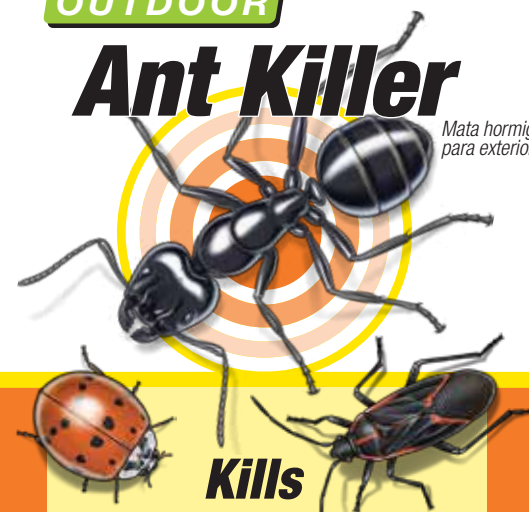
**DECLARACIONES DE PRECAUCIÓN****RIESGOS PARA LOS HUMANOS Y LOS ANIMALES DOMÉSTICOS**

**PRECAUCIÓN:** El producto es nocivo si se ingiere o es absorbido por la piel. Evite el contacto con la piel, los ojos o la ropa. Lávese cuidadosamente con jabón y agua después de manipular el producto y antes de comer, beber, masticar chicle o usar tabaco. Quítense y lave la ropa contaminada antes de volver a usarla.

**PRIMEROS AUXILIOS: SI ESTÁ EN LA PIEL O EN LA ROPA:** Quítense la ropa contaminada. Enjuague la piel inmediatamente con bastante agua por 15 – 20 minutos. Llame a un centro de control de envenenamientos o a un médico para recibir instrucciones de tratamiento. Cuando llame a un centro de control de envenenamientos o a un médico, o busque tratamiento, tenga a mano el envase o la etiqueta del producto. **SI SE INGIERE:** Llame inmediatamente a un centro de control de envenenamientos o a un médico. No induzca el vómito, a menos que se lo indique un médico o el centro de control de envenenamientos. No administre ningún líquido a la persona. Jamás administre nada por la boca a una persona que haya perdido el conocimiento. Llame al 1-888-740-8712 para obtener información sobre emergencias médicas o incidentes con pesticidas.

**RIESGOS AMBIENTALES:** Este producto es extremadamente tóxico para organismos acuáticos, incluyendo peces e invertebrados. No lo aplique directamente en el agua o cerca de ella. El escurrimiento y la propagación pueden ser peligrosos para peces en aguas adyacentes a las áreas vecinas. No contamine el agua al desechar el agua con que lavó o enjuagó el equipo. Consulte las instrucciones de uso para precauciones y requerimientos adicionales. Este pesticida es altamente tóxico para las abejas expuestas al tratamiento directo en cultivos o hierbas en flor. No aplique este producto ni deje que llegue hasta los cultivos o hierbas en flor mientras haya abejas que visiten activamente el área de tratamiento.

**RIESGOS FÍSICOS O QUÍMICOS: Contenido bajo presión.** No utilice ni almacene el producto cerca de fuentes de calor o fuego. No perforo ni incinere el envase. La exposición a temperaturas superiores a 130 °F puede causar una explosión. No utilice este producto dentro o sobre equipos eléctricos, debido al riesgo de descarga eléctrica.

**TERRO®****OUTDOOR****Ant Killer***Mata hormigas para exteriores***Kills Asian Lady Beetles & Boxelder Bugs****SPRAYS 10 TO 15 FEET****Also Kills:**  
Carpenter Ants, Carpenter Bees  
Cockroaches, Spiders & Other Home Invaders**KEEP OUT OF REACH OF CHILDREN****CAUTION**

See Rear Panel for Additional Precautionary Statements.

**NET WT/PESO NETO 1 lb. 3 oz. (539g)****MANTÉNGASE FUERA DEL ALCANCE DE LOS NIÑOS****PRECAUCIÓN**

Vea el Panel Posterior para Precauciones Adicionales.

**ACTIVE INGREDIENTS/INGREDIENTE ACTIVO:**

Permethrin 0.200%

Related reaction products 0.017%

Tetramethrin 0.200%

**OTHER INGREDIENTS/OTROS INGREDIENTES:** 99.583%**TOTAL** 100.000%

\*Cis-trans isomers ratio: Min. 35% (+ or -) cis, Max. 65% (+ or -) trans