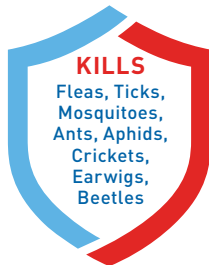


ADAMSTM *plus*

YARD SPRAY



TREATS UP TO
5,000
SQUARE FEET

KILLS 50+ INSECTS

UP TO 4 WEEKS CONTROL

For Use Around Residential Areas Only

ACTIVE INGREDIENT:

Permethrin*..... 2.5%

OTHER INGREDIENTS: 97.5%

TOTAL: 100.0%

*Cis/trans isomer ratio: Min. 35% (±) cis, Max. 65% (±) trans

KEEP OUT OF REACH OF CHILDREN CAUTION

See Back Panels for Precautionary Statements & First Aid

RM: 99.0000550.03 • ADP010523-1

NET CONTENTS: 1 QT (32 FL OZ)(946.3 mL)

MADE IN
USA
*Made in the USA from US
and imported ingredients.

ADAMSTM *plus* YARD SPRAY



PRECAUTIONARY STATEMENTS – HAZARDS TO HUMANS AND DOMESTIC

ANIMALS – CAUTION: Harmful if absorbed through skin. Avoid contact with skin, eyes, or clothing. Wash thoroughly with soap and water after handling and before eating, drinking, chewing gum, using tobacco or using the toilet. Remove and wash contaminated clothing before reuse.

FIRST AID

**If on skin
or clothing**

- Take off contaminated clothing.
- Rinse skin immediately with plenty of water for 15-20 minutes.
- Call a poison control center or doctor for treatment advice.

Have the product container or label with you when calling a poison control center or doctor, or going for treatment. You may also contact 1-800-234-2269 for emergency medical treatment information.

Manufactured for: **Farnam Companies Inc.**

1501 East Woodfield Road, 200W, Schaumburg, IL 60173

EPA Reg. No. 28293-271-270 EPA Est. No. 59144-GA-1

Product Code: 3006022 • 99.0000551.03 • ADP032122-2

©2006, 2010, 2013, 2019, 2022 Wellmark International.



ENVIRONMENTAL HAZARDS: This pesticide is extremely toxic to aquatic organisms, including fish and invertebrates. To protect the environment, do not allow pesticide to enter or run off into storm drains, drainage ditches, gutters or surface waters. Applying this product in calm weather when rain is not predicted for the next 24 hours will help to ensure that wind or rain does not blow or wash pesticide off the treatment area. Rinsing application equipment over the treated area will help avoid run off to water bodies or drainage systems. This pesticide is highly toxic to bees exposed to direct treatment on blooming crops or weeds. Do not apply this product or allow it to drift to blooming crops or weeds while bees are actively visiting the treatment area.

DIRECTIONS FOR USE: It is a violation of Federal Law to use this product in a manner inconsistent with its labeling.

USE RESTRICTIONS

Do not allow adults, children or pets to enter the treated area until vapors, mists and aerosols have dispersed and the treated area has been thoroughly ventilated.

Do not spray animals.

Do not water the treated area to the point of run-off.

Do not make applications during rain.

All outdoor applications must be limited to spot or crack-and-crevice treatments only, except for the following permitted uses:

- 1) Treatment to soil or vegetation around structures;
- 2) Applications to lawns, turf, and other vegetation;
- 3) Applications to building foundations, up to a maximum height of 3 feet.

Other than applications to building foundations, all outdoor applications to impervious surfaces such as sidewalks, driveways, patios, porches, and structural surfaces (such as windows, doors, and eaves) are limited to spot and crack-and-crevice applications only.

Application is prohibited directly into sewers or drains, or to any area like a gutter where drainage to sewers, storm drains, water bodies, or aquatic habitat can occur. Do not allow the product to enter any drain during or after application.

Not for use in outdoor residential misting systems.

This product kills troublesome outdoor insects which destroy lawns, roses, flowers, trees and shrubs: Ants, Bagworms, Aphids, Armyworms, Chinch bugs, Inchworms, Spider mites, Beetles, Fleas, Cicadas, Thrips, Cutworms, Sod webworms, Leafrollers, Whiteflies, Moths. Also kills Brown dog ticks, Budworms, Citrus black flies, Crickets, Earwigs, Elm spanworms, Fall cankerworms, Grasshoppers, Japanese beetles, Leafminers, Lone star ticks, Mealybugs, Millipedes, Mole crickets, Mosquitoes, Scales, Sowbugs (pillbugs), Tent caterpillars, Ticks including Deer tick (which may carry Lyme disease), and many others.

NUISANCE PESTS IN OUTDOOR AREAS

TREATMENT AREAS	PESTS	REMARKS
Outside Surfaces of Buildings	Ants (including foraging Fire ants), Chiggers, Clover mites, Crickets, Earwigs, Millipedes, Sowbugs (Pillbugs), Mosquitoes	To help prevent infestation of buildings, treat the building foundation to a height of 3 feet, where pests are active and may find entrance. Repeat treatment as needed to maintain effectiveness.
Other Outdoor Areas	Ants (including foraging Fire ants), Chiggers, Crickets, Earwigs, Fleas, Lone star ticks, Ticks, including Deer tick (which may carry Lyme disease)	For treatment of localized infestations of these insects in areas where there are weeds or bushy non-crop areas, spray infested areas thoroughly. For Ants, thoroughly wet hills and runways. Repeat application as reinfestation occurs.
	Tent Caterpillars	Application should be made when caterpillars are young and tents are first noticed. For best results, apply in the late afternoon or evening, when caterpillars have returned to their tents. Wet tents with spray on all sides. A few caterpillars may be seen escaping from the tent, however, they should die within several hours.

HOME LAWNS

TREATMENT AREAS	PESTS	REMARKS
Bent, Bermuda, Bluegrass, Dichondra, Fescue, Irish Moss, Merion, St. Augustine	Armyworms, Brown dog ticks, Chiggers, Chinch bugs, Cutworms, Fleas, Japanese beetle grubs, Mole crickets, Mosquitoes, Sod webworms, Ticks, including Deer tick (which may carry Lyme disease)	Thoroughly wet down grass a few hours before applying. Home lawns should be no taller than 3 inches at time of application. Slightly more water may be used as long as the amount of product per area is as listed. For heavy infestations, repeat application after 2 weeks.
	Ants (including foraging Fire ants), Crickets, Grasshoppers	

TREES & SHRUBS

TREATMENT AREAS	PESTS	REMARKS
Arizona cypress, Azalea, Birch, Cherry, Non-bearing citrus, Conifers, Elm, English ivy, Euonymus, Weeping fig, Fir, Honeysuckle, Lilac, Mock-orange, Oak, Palm, Philodendron, Pine, Poinsettia, Tulip, Poplar, Rhododendron, Taxus	Aphids, Bagworms, Cicadas, Exposed thrips, Fall cankerworms, Inchworms, Leafminers, Leafrollers, Mealybugs, Spider mites, Whiteflies	Apply as a thorough spray, wetting leaves and branches to the dripping point. Try to penetrate dense foliage. Spray in the late afternoon or evening, when the temperature ranges from 50° to 75° F and when there is little or no wind. Spray at the first sign of insects. Repeat as necessary; use intervals of 4-8 days. Application can be made up to the day of collection.
Cherry, Honeysuckle	Fall webworms	
Conifers	Budworms	
Elm	Elm leaf beetles, Elm spanworms, Fall webworms	
Douglas and Grand firs	Tussock moths	
Non-bearing citrus	Citrus black flies	
Oak	Oakworms	
Pine	Pine beetles, Pine moths, Pine needleminers, Needle scales	

ROSES & FLOWERS

TREATMENT AREAS	PESTS	REMARKS
Ageratum, Aster, Azalea, Begonia, Coleus, Common ninebark and snowberry, Exacum, Gladiolus, Gold bells, Hypoestes, Ivy, Lilac, Marigold, Mock-orange, Nannyberry, Orchid, Pansy, Pea shrub, Petunia, Poinsettia, Rhododendron, Rose, Snapdragon, Zinnia	Aphids, Bagworms, Cicadas, Exposed thrips, Fall cankerworms, Fall webworms, Inchworms, Leafminers, Leafrollers, Mealybugs, Spider mites, Whiteflies	Apply as a thorough spray, wetting the plants to the dripping point. Try to hit underside of leaves and penetrate dense foliage. Spray in the late afternoon or evening, when the temperature ranges from 50° to 75° F and when there is little or no wind. Spray at the first sign of insects. Repeat as necessary; use intervals of 4-8 days. Application can be made up to the day of collection.

HOSE END SPRAYER: Easy to Use. For Application to Lawns, Outdoor Ornamentals, Outside Surfaces of Buildings, and Other Outdoor Residential Areas.

32 ounces treats up to 5,000 square feet.

Snap off tab on top of sprayer before first use.

1. Make sure knob Control lever is in the OFF position. Shake well and attach to hose.
2. Turn water on at faucet, aim nozzle toward lawn and turn knob Control lever to ON to begin spraying.
3. When finished turn Control lever to OFF position. Turn faucet to OFF position. Discharge residual water pressure by turning ON and OFF again. Store out of reach of children.

STORAGE AND DISPOSAL:

PESTICIDE STORAGE: Store in a cool, dry area away from heat or open flame. **PESTICIDE DISPOSAL:** If **partly filled** – Call your local solid waste agency for disposal instructions. Never place unused product down any indoor or outdoor drain. **CONTAINER DISPOSAL** If **empty** – Nonrefillable container. Do not reuse or refill this container. Place in trash or offer for recycling if available.

ADAMSTMplus YARD SPRAY

ACTIVE INGREDIENT:

Permethrin* 2.5%

OTHER INGREDIENTS:..... 97.5%

TOAL:..... 100.0%

*Cis/trans isomer ratio: Min. 35% (±) cis, Max. 65% (±) trans

KEEP OUT OF REACH OF CHILDREN

CAUTION

See Attached Leaflet for Additional Precautionary Statements & First Aid

For information or in an emergency, call 1-800-234-2269
or visit our Web site: www.adamspetcare.com

Notice: To the extent consistent with applicable law, Buyer assumes all responsibility for safety and use not in accordance with directions.

Central Garden & Pet and Central Garden & Pet with design are trademarks of Central Garden & Pet Company. All other trademarks are property of their respective owners.

EPA Reg. No. 28293-271-270 EPA Est. No. 59144-GA-1

©2006, 2010, 2013, 2019, 2022 Wellmark International.

