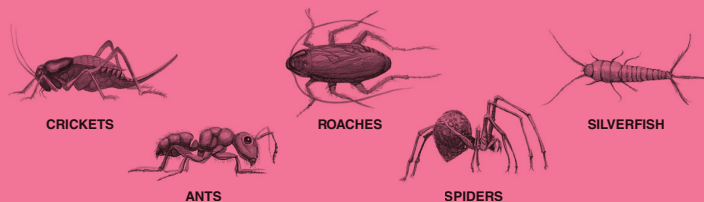




CR-2

ROACH & ANT KILLER



- Provides quick killing action and residual control
- Kills bugs you see and even the ones you don't see
- Protects for up to 3 months • Pleasing Cherry Scent

DIELECTRIC BREAKDOWN VOLTAGE OF 47,000 VOLTS

ACTIVE INGREDIENTS:

*Tetramethrin	0.10%
**Permethrin	0.25%
***Piperonyl Butoxide, Technical	0.50%

OTHER INGREDIENTS: 99.15%

TOTAL 100.00%

* 1-cyclohexene-1,2-dicarboximidomethyl 2,2-dimethyl-3-(2-methylpropenyl) cyclopropanecarboxylate.

** (3-phenoxyphenyl) methyl (±) cis/trans 3-(2,2-dichloroethenyl) 2,2-dimethyl cyclopropanecarboxylate.

Cis/trans ratio: min. 35% (±) cis and max. 65% (±) trans.

*** Equivalent to min. 0.4% (butylcarbityl)(6-propyl-

piperonyl) ether and 0.1% related compounds.

† Contains Petroleum Distillates.

EPA REG. NO. 10088-92-5741 EPA EST. 33595-MO-3
EPA EST. 33595-MO-2 EPA EST. 33595-MO-4

The Est. No. appears after the can code

KEEP OUT OF REACH OF CHILDREN
CAUTION

SEE SIDE PANEL FOR ADDITIONAL PRECAUTIONARY STATEMENTS

#6903 NET WEIGHT: 14 OZ. (397 g)

DIRECTIONS FOR USE: It is a violation of Federal law to use this product in a manner inconsistent with its labeling.

PRECAUTIONS AND RESTRICTIONS

Do not use in commercial food/feed handling establishments, restaurants or other areas where food is commercially prepared or processed. Do not allow adults, children, or pets to enter the treated area until sprays have dried. Do not apply this product in a way that will contact adults, children, or pets either directly or through drift. Remove pets, birds, and cover fish aquariums before spraying. Do not wet articles to point of runoff or drip. Do not use treated article until spray has dried. Do not use as a space spray. Not for broadcast use on indoor residential surfaces. Do not water the treated area to the point of runoff. All outdoor applications must be limited to spot or crack-and-crevice treatments only, except for the following permitted uses: Treatment to soil or vegetation around structures; Applications to building foundations, up to a maximum height of 3 feet. Other than applications to building foundations, all outdoor applications to impervious surfaces such as sidewalks, driveways, patios, porches and structural surfaces (such as windows, doors, and eaves) are limited to spot and crack-and-crevice applications, only.

Remove protective cap, hold container upright and direct spray away from face. Hold can 12-15 inches from surface being sprayed. Press valve down and spray as directed. Spray surface until slightly wet (at a rate of 4 ounces product to treat approximately 25 square feet of surface area).

INDOORS: COCKROACHES (including adult and immature stages of both non-resistant and organophosphate and carbamate resistant strains), **ANTS**, **BOOKLICE**, **BOXELDER BUGS**, **CENTPEDES**, **CRICKETS**, **DERMESTIDS**, **FIREBRATS**, **FLEAS**, **PALMETTO BUGS**, **SILVERFISH**, **SOWBUGS**, **TICKS** **AND WATERBUGS:** Apply thoroughly to all areas where these pests crawl and hide, especially in cracks and crevices, and hidden areas around sinks and storage areas, behind baseboards, around doors and windows, behind and under refrigerators, cabinets, sinks and stoves, the underside of shelves, drawers, bookcases, and similar areas. When pests are driven out, spray directly. Repeat as necessary.

ANTS: Spray around ant trails, doors and windows and other places where ants enter premises. Spray around nests hidden under steps, brickwork, concrete, etc. Break apart accessible nests and spray freely on and around debris. Repeat as necessary.

BROWN DOG TICKS and FLEAS in Buildings: Apply in infested areas such as pet beds and resting quarters, nearby cracks and crevices, under the edges of rugs and floor coverings, between and under cushions of upholstered furniture and other areas where these pests may be present. Old bedding of pets should be removed and replaced with clean, fresh bedding after treatment of pet areas. Do not use directly on pets.

SPIDERS: Apply along and behind baseboards, to window and door frames, corners, pipes, storage localities, attics, crawlspaces and other areas over which these pests may crawl.

CENTPEDES, EARWIGS, GROUND BEETLES, MILLPEDES, MOLE CRICKETS, PILLBUGS, TICKS, SOWBUGS and SCORPIONS: Apply around doors and windows and other places where these pests may enter premises. Treat baseboards, storage areas and other locations where these pests are found.

CARPET BEETLES (BLACK, FURNITURE AND VARIED): Spray on and under edges of floor coverings, under rugs and furniture and in closets or other localities where these insects are found.

PRECAUTIONARY STATEMENTS HAZARDS TO HUMANS AND DOMESTIC ANIMALS

CAUTION:

Causes moderate eye irritation. Avoid contact with eyes or clothing. Harmful if swallowed. Prolonged or frequently repeated skin contact may cause allergic reactions in some individuals. Wash thoroughly with soap and water after handling and before eating, drinking, chewing gum, using tobacco or using the toilet.

FIRST AID:

IF IN EYES: Hold eye open and rinse slowly and gently with water for 15-20 minutes. Remove contact lenses, if present, after the first 5 minutes, then continue rinsing eye. **IF SWALLOWED:** Immediately call a poison control center or doctor. Do not induce vomiting unless told to do so by a poison control center or doctor. Do not give any liquid to the person. Do not give anything by mouth to an unconscious person. **IF ON SKIN OR CLOTHING:** Take off contaminated clothing. Rinse skin immediately with plenty of water for 15-20 minutes. **IF INHALED:** Move person to fresh air. If person is not breathing, call 911 or an ambulance, then give artificial respiration, preferably mouth-to-mouth if possible.

Call a poison control center or doctor for further treatment advice. Have the product container or label with you when calling a poison control center or doctor, or going for treatment. For information on this pesticide (including health concerns, medical emergencies, or pesticide incidents), call the National Pesticide Information Center at 1-800-858-7378.

NOTE TO PHYSICIAN: Contains petroleum distillate—vomiting may cause aspiration pneumonia.

ENVIRONMENTAL HAZARDS

This product is extremely toxic to fish and aquatic invertebrates. Do not apply directly to water.

PHYSICAL OR CHEMICAL HAZARDS

FLAMMABLE. Contents under pressure. Do not use or store near heat or open flame. Do not puncture or incinerate container. Exposure to temperatures above 130°F may cause bursting.

STORAGE AND DISPOSAL

Do Not Contaminate Water, Food, or Feed By Storage or Disposal.

Pesticide Storage: Store in a dry place no lower in temperature than 50°F or higher than 120°F. **Container Disposal:** Do Not Puncture or Incinerate! Nonrefillable container. Do not reuse or refill this container. If empty: Place in trash or offer for recycling, if available. If partly filled: Call your local solid waste agency for disposal instructions.

SOLD BY: **SPARTAN CHEMICAL COMPANY, INC.**

1110 Spartan Dr., Maumee, OH 43537/1-800-537-8990/spartanchemical.com

©SCC 2/19

