

INDOORS

LOCALIZED TREATMENT OF WOOD DESTROYING INSECTS:

Carpenter Ants, Termites and Carpenter Bees: For effective control, locate and treat nests and surrounding areas. Apply around doors and windows and other places where ants enter premises and where they crawl and hide. Spray into infested wood through existing openings. For termites, the purpose of the application is to kill winged forms, which may be present in the treated areas at the time of application. Not recommended as sole protection against wood destroying insects. For active infestations, get a professional inspection. Such applications are not a substitute for mechanical alteration, soil treatment or foundation treatment but are merely a supplement. For severe termite infestations, contact a professional pest control operator in your area.

Cockroaches (Including Adult and Immature Stages of Both Non-Resistant and Organophosphate and Carbamate Resistant Strains), Ants, Booklice, Boxelder Bugs, Centipedes*, Crickets, Dermestids, Firebrats, Fleas, Palmetto Bugs, Silverfish, Sowbugs*, Ticks and Waterbugs: Apply as a spot and crack & crevice treatment to areas where these pests crawl and hide, especially in hidden areas around sinks and storage areas, behind baseboards, around doors and windows, behind and under refrigerators, cabinets, sinks and stoves, the underside of shelves, drawers, bookcases, and similar areas. When pests are driven out, spray directly. Cover all food handling surfaces and cover or remove all food and cooking utensils or wash thoroughly after treatment. Exposed food should be covered or removed. Repeat as necessary but not more than once per week.

Roaches: Spray in cracks and crevices, around baseboards and other hiding places until wet. When driven out, spray bugs directly.

Ants: Spray ant trails and around doors and windows and other places where ants enter the house. Repeat as necessary but not more than once per week.

Ticks and Fleas ON SURFACES: Remove pet bedding and destroy or clean thoroughly. Spray pet resting quarters. Adult fleas and larvae contacted by spray will be killed. Put fresh bedding down once spray has dried. Do not spray animals directly. For best results, pets should be treated with an appropriate flea and/or tick control product registered for use on pets before allowing them to return to the treated area. Spray rugs and carpets where infestations are bad. Delicate fabrics should be tested for staining in an inconspicuous area prior to use.

Spiders: Apply along and behind baseboards, to window and door frames, corners, pipes, storage localities, attics, crawl spaces and other areas over which these pests may crawl.

Centipedes*, Ground Beetles, Pillbugs, Sowbugs*, Scorpions* and Ticks: Apply around doors and windows and other places where these pests may enter premises. Treat baseboards, storage areas and other locations where these pests are found.

Silverfish, Crickets, Spiders, Earwigs: Apply around doors and windows, baseboards, storage areas, pipes and other areas infested by these pests or spray pests directly. Spray surfaces until wet.

PANTRY PESTS: Grain Beetles (Rusty, Merchant and Saw-Toothed), Flour Beetles (Red and Confused), Chocolate Moths, Cigarette Beetles, Clover Mites, Cluster Flies, Drugstore Beetles, Elmleaf Beetles, Rice Weevils, Lesser Grain Borers, Spider Beetles and Tobacco Moths: Treat exposed stages. Remove all food-stuffs, utensils and shelf paper from area to be treated. Discard used shelf paper and any infested foodstuffs. Apply spray to shelves and in cracks and crevices behind and under cupboards and cabinets. Allow spray to dry prior to replacement of shelf paper, food and utensils. Wash any exposed food handling surfaces and utensils before use.

Carpet Beetles (Black, Furniture and Varied): Spray on and under edges of floor coverings, under rugs and furniture and in closets or other localities where these insects are found.

Webbing Clothes Moths: Use this product as a crack and crevice treatment in closets and other storage areas where these pests are found. This is an adjunct treatment and will not control moth larvae already on clothes. Do not apply to clothing.

*Not for use on Centipedes, Sowbugs or Scorpions in California.

Buyer assumes all risks of use, storage and handling of this material not in strict accordance with directions given herewith.

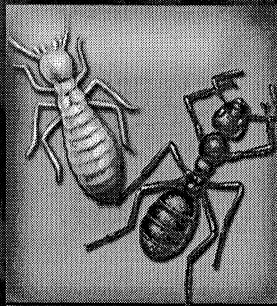
TRUSTED SINCE 1926

BONIDE

TERMITE & CARPENTER ANT KILLER



KILLS EXPOSED TERMITES, CARPENTER ANTS AND CARPENTER BEES



Kills On Contact

ACTIVE INGREDIENTS	
S-Bioallethrin	0.05%
Deltamethrin	0.02%
OTHER INGREDIENTS*	
Total	99.93%
	100.00%
* Contains petroleum distillate.	
EPA Est. No. 11622-GA-1 (G), 11715-TN-1(T), 10806-NJ-1 (N), 5693-MA-1 (M)	
EPA Reg. No. 4-461	

Keep Out Of Reach Of Children

CAUTION

(See Side Panels for additional Precautionary Statements)

Net Contents 15 oz. (424 g)

PRECAUCION AL CONSUMIDOR: Si usted no lee ingles, no use este producto hasta que la etiqueta le haya sido explicada ampliamente. **TO THE USER:** If you cannot read English, do not use this product until the label has been fully explained to you.

FIRST AID	
If swallowed:	<ul style="list-style-type: none"> • Immediately call a poison control center or doctor. • Do not induce vomiting unless told to do so by a poison control center or doctor. • Do not give any liquid to the person. • Do not give anything by mouth to an unconscious person.

HOT LINE NUMBER
Have the product container or label with you when calling a poison control center or doctor, or going for treatment. For information on pesticide products (including health concerns, medical emergencies, or pesticide incidents), call the National Pesticide Information Center at 1-800-858-7378.

NOTE TO PHYSICIAN
Contains petroleum distillate - vomiting may cause aspiration pneumonia.

PRECAUTIONARY STATEMENTS
HAZARDS TO HUMANS AND DOMESTIC ANIMALS
CAUTION: Harmful if swallowed. Wash thoroughly with soap and water after handling and before eating, drinking, chewing gum or using tobacco.

ENVIRONMENTAL HAZARDS
This product is toxic to fish. Do not apply directly to water. This product is highly toxic to bees exposed to direct treatment or residues on blooming crops or weeds. Do not apply this product or allow it to drift to blooming crops or weeds if bees are visiting the treatment area.

PHYSICAL AND CHEMICAL HAZARDS
Contents under pressure. Keep away from heat, sparks and open flame. Do not puncture or incinerate container. Exposure to temperatures above 130°F may cause bursting. Do not apply this product in or on electrical equipment due to the possibility of shock hazard.

DIRECTIONS FOR USE:
It is a violation of Federal law to use this product in a manner inconsistent with its labeling.

SHAKE WELL BEFORE EACH USE. Hold container upright. Do not spray up into air. Apply to surfaces only. Remove protective cap and direct spray away from face. Hold can 12-15 inches from surface being sprayed. Press button down and spray as directed. Test product in an inconspicuous area before applying. Spray until surface is slightly wet but not to the point of run-off. Over application may cause damage. Will not stain surfaces or fabrics where water alone causes no damage.

Remove pets, birds and cover fish aquariums before spraying. Prevent re-entry of dogs and cats into treated area until spray deposits are dry.

This product is intended for use in and around residential structures and their immediate surroundings. Permitted areas of use include: apartments, attics, automobiles, basements, bathrooms, boats, cabins, campers, carports, cat sleeping quarters, clothes storage, condominiums, decks, dens, driveways, garages, gazebos, homes, kitchens, lanais, living rooms, parlors, patios, pet sleeping areas, play rooms, porches, recreational vehicles, rooms, solariums, storage areas, sun rooms, utility rooms and verandas.

STORAGE AND DISPOSAL
Storage: Store and transport in an upright position in a cool, dry area away from children and pets and away from heat, sparks and open flame. Do not transport or store below 32°F.
Disposal: Do Not Puncture or Incinerate! *If empty:* Place in trash or offer for recycling if available. *If partly filled:* Call your local solid waste agency for disposal instructions.

Bonide Products, Inc.
6301 Suttiff Road
Oriskany, NY 13424



0 37321 00370 0