

WA

NOV 24 2008

53883-217-7401

52166
H & G

New 11-19-08

169

**PRECAUTIONARY STATEMENTS
HAZARDS TO HUMANS AND DOMESTIC ANIMALS**

CAUTION. Harmful if swallowed or absorbed through skin. Causes eye irritation. Avoid contact with skin, eyes, or clothing. Washing hands thoroughly with soap and water after handling and before eating, drinking, chewing gum, or using tobacco will reduce exposure.

FIRST AID

If Swallowed:	<ul style="list-style-type: none"> • Call a poison control center or doctor immediately for treatment advice. • Have person sip a glass of water if able to swallow. • Do not induce vomiting unless told to do so by a poison control center or doctor. • Do not give anything to an unconscious person.
If On Skin Or Clothing:	<ul style="list-style-type: none"> • Take off contaminated clothing. • Rinse skin immediately with plenty of water for 15-20 minutes. • Call a poison control center or doctor for treatment advice.
If In Eyes:	<ul style="list-style-type: none"> • Hold eye open and rinse slowly and gently with water for 15 to 20 minutes. • Remove contact lenses, if present, after the first 5 minutes, then continue rinsing eye. • Call a poison control center or doctor for treatment advice.

NOTE: When calling poison control center, have this product label accessible. If seeking treatment at an emergency room or doctor's, bring product label to show medical personnel. You may also contact National Pesticide Information Center at 1-800-858-7378 for emergency medical treatment information

ENVIRONMENTAL HAZARDS

This product is highly toxic to aquatic invertebrates. Do not apply directly to water. Do not contaminate water when cleaning equipment or disposing of equipment wash-water.

DIRECTIONS FOR USE

It is a violation of Federal Law to use this product in a manner inconsistent with its labeling. For best results, read and follow all label directions.

USE RESTRICTIONS

- Do not apply near fish pools, ponds, lakes or streams
- Do not use in vegetable gardens
- Food utensils such as teaspoons or measuring cups should not be used for food purposes after use with insecticides.

GENERAL INFORMATION

HI-YIELD® SYSTEMIC INSECT GRANULES is for use on roses, flowers, shrubs and containerized plants (except edible plants) to kill insect pests listed in the table below. **HI-YIELD® SYSTEMIC INSECT GRANULES** is absorbed by roots and moves through the entire plant. New growth is protected against insects for up to 8 weeks

INSECTS CONTROLLED

Adelgids	Pine Tip Moth Larvae
Aphids	Plant bugs
Armored Scales (<i>suppression</i>)	Psyllids
Fungus Gnat Larvae	Root Weevil Larvae (<i>including black vine weevils</i>)
Japanese Beetle Adults	Sawfly Larvae
Lace bugs	Soft Scales (<i>including lobate lac scales</i>)
Leaf Beetles (<i>including Elm Leaf, Viburnum Leaf, and Lily Leaf Beetles</i>)	Thrips
Leafhoppers (<i>including Glassy-winged Sharpshooter</i>)	Whiteflies
Leafminers (<i>including Birch and Boxwood Leafminers</i>)	White Grub Larvae (<i>such as Japanese Beetles, Chafers, European Chafer, Oriental Beetle, Asiatic Garden Beetle</i>)
Mealybugs	

APPLICATION TIMING

HI-YIELD® SYSTEMIC INSECT GRANULES may be applied at planting. When using on established plants, apply before pest problems occur or immediately when first seen. Applications should be made every 8 weeks during the growing season.

APPLICATION INSTRUCTIONS

For best results, apply **HI-YIELD® SYSTEMIC INSECT GRANULES** evenly, cultivate lightly, and water thoroughly. For containerized plants, apply the appropriate amount of granules evenly to the top of the soil. Mix the granules thoroughly into the top layer of the soil making sure not to damage the upper roots. Water in thoroughly. To help assure that the roots can absorb the insecticide, do not water too heavily for the first 10 days. Work granules into top 1 to 2 inches of soil. For flower beds, sprinkle granules evenly over the bed.

Distributed By:

VOLUNTARY PURCHASING GROUPS, INC.
P.O. BOX 460 • HWY. 56 WEST
BONHAM, TEXAS 75418

Visit Us At: www.hi-yield.com

EPA Reg. No. 53883-217-7401

EPA Est. No 7401-TX-001

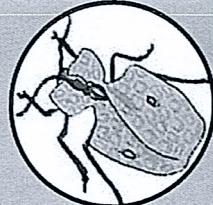
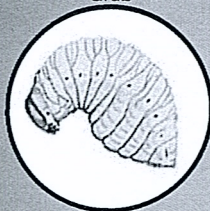


8-08

Hi-Yield®

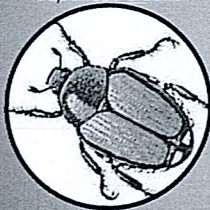
Systemic Insect Granules

Grub



Lace Bug

Japanese Beetle



Leaf Hopper

- Protects Against Damaging Insects For Up To 2 Months.
- Protects Plants From Damage By: Aphids, Whiteflies, Mealybugs, Scale, And Other Listed Insects.
- Use In Potted Plants Indoors And Outdoors.
- Even New Growth Is Protected Against Insects For Up To 8 Weeks.

FOR RESIDENTIAL USE ONLY

ACTIVE INGREDIENT: Imidacloprid 0.22%
INERT INGREDIENTS: 99.78%
TOTAL: 100.00%

**KEEP OUT OF REACH
OF CHILDREN
CAUTION**

STOP - READ ENTIRE LABEL BEFORE EACH USE.

See side panels for Additional Ingredients and Precautionary Statements.

Not for sale, sale info, distribution and or use in Nassau, Suffolk, Kings, and Queens counties of New York.

NET WEIGHT 1 LB.**31228****APPLICATION RATES**

PLANTS	AMOUNT HI-YIELD® SYSTEMIC INSECT GRANULES NEEDED*	(g/AI)
Roses (2 lbs. treats up to 16 medium-size roses)	¼ cup per plant	(0.12)
Flowers	¼ cup per 50 sq. ft. (5' x 10' bed area)	(0.12)
Shrubs	½ cup per foot of plant height	(0.24)

CONTAINERIZED PLANT/SIZE 8 OZ. TREATS UP TO SIX-6 INCH POTTED PLANTS	AMOUNT OF HI-YIELD® SYSTEMIC INSECT GRANULES NEEDED	(g/AI)
1 gallon	2.5 tablespoons	(0.77)
2 gallon	½ cup	(0.193)
3 gallon	¾ cup	(0.23)
5 gallon	¾ cup	(0.345)
Or	Or	Or
4 inch	2.5 teaspoons	(0.025)
5 inch	1.5 tablespoons	(0.05)
6 inch	2.5 tablespoons	(0.075)
8 inch	¾ cup	(0.1)
10 inch	¾ cup	(0.15)
12 inch	¾ cup	(0.2)

STORAGE AND DISPOSAL

STORAGE: Store in original container in a cool, dry place, out of the reach of children, preferably a locked storage cabinet. Protect from freezing.

DISPOSAL: If Empty: Do not reuse empty container. Place in trash.

If Partly Filled: It is best to use all of the product in accordance with label directions. If it is necessary to dispose of unused product, please call your local solid waste agency for disposal instructions. Never place unused product down any indoor or outdoor drain.

IMPORTANT: READ BEFORE USE

Read the entire Directions for Use, Conditions, Disclaimer of Warranties and Limitations of liability before using this product.

If terms are not acceptable, return the unopened product container at once. By using this product, user or buyer accepts the following conditions, disclaimer of warranties and limitations of liability.

CONDITIONS: The directions for use of this product are believed to be adequate and must be followed carefully. However, because of manner of use and other factors beyond Voluntary Purchasing Groups, Inc. control it is impossible for Voluntary Purchasing Groups, Inc. to eliminate all risks associated with the use of this product. As a result, crop injury or ineffectiveness is always possible. All such risks shall be assumed by the user or buyer.

DISCLAIMER OF WARRANTIES: TO THE EXTENT CONSISTENT WITH APPLICABLE LAW VOLUNTARY PURCHASING GROUPS, INC. MAKES NO OTHER WARRANTIES, EXPRESS OR IMPLIED, OF MERCHANTABILITY OR OF FITNESS FOR A PARTICULAR PURPOSE OR OTHERWISE, THAT EXTEND BEYOND THE STATEMENTS MADE ON THIS LABEL. No agent of Voluntary Purchasing Groups, Inc. is authorized to make any warranties beyond those contained herein or to modify the warranties contained herein. Voluntary Purchasing Groups, Inc. disclaims any liability whatsoever for special, incidental or consequential damages, resulting from the use or handling of this product.

LIMITATIONS OF LIABILITY: TO THE EXTENT CONSISTENT WITH APPLICABLE LAW THE EXCLUSIVE REMEDY OF THE USER OR BUYER FOR ANY AND ALL LOSSES, INJURIES OR DAMAGES RESULTING FROM THE USE OR HANDLING OF THIS PRODUCT, WHETHER IN CONTRACT WARRANTY, TORT, NEGLIGENCE, STRICT LIABILITY OR OTHERWISE, SHALL NOT EXCEED THE PURCHASE PRICE PAID, OR AT VOLUNTARY PURCHASING GROUPS, INC.'S ELECTION, THE REPLACEMENT OF PRODUCT.

AN ADDITIONAL EQUIVALENT CHART FOR DRY MEASURE IS LISTED BELOW*

DRY MEASURE CHART			
3 teaspoons	1 Tablespoon	½ ounce	
2 Tablespoons	¼ cup	1 ounce	
4 Tablespoons	¼ cup	2 ounces	
5½ Tablespoons	½ cup	2.6 ounces	
8 Tablespoons	½ cup	4 ounces	
12 Tablespoons	¾ cup	6 ounces	
32 Tablespoons	2 cups	16 ounces	1 pound
64 Tablespoons	4 cups	32 ounces	2 pounds

*Please note: Dry Measure differs from Liquid Measure

Food utensils such as teaspoons or measuring cups should not be used for food purposes after use with insecticides.