

NEW 0 15 09

27

Surround[®] At Home[®] Crop Protectant

Surround *At Home* Crop Protectant forms a Barrier Film, which acts as a Broad Spectrum Crop Protectant for Home, Landscape, and Garden. Use for controlling damage from various Insect, Mite, and Disease Pests, Growth Enhancer, and Protectant against Sunburn and Heat Stress.

For External Household Use Only

Do not spray where a visible white film is undesirable or cannot be washed off such as porous wood, masonry, asphalt, and other valuable goods.

NOT A PLANT FOOD INGREDIENT

ACTIVE INGREDIENT:

Kaolin	95.0%
Other INGREDIENTS.....	5.0%
Total: 100.0%	

KEEP OUT OF REACH OF CHILDREN

CAUTION

See Attached Booklet For First Aid Statement,
Precautionary Statements, Directions For Use, Mixing Instructions,
General Application and Specific Crop Use Instructions

EPA Reg. No. 61842-18-56872

EPA Est. No. 56872-IN-001

Growth enhancer uses are not registered in California.

The use of Surround[®] *at Home*[®] in crop protection applications is covered by
U.S. Patents: 6,027,740; 6,069,112; 6,110,869; and 6,156,327.

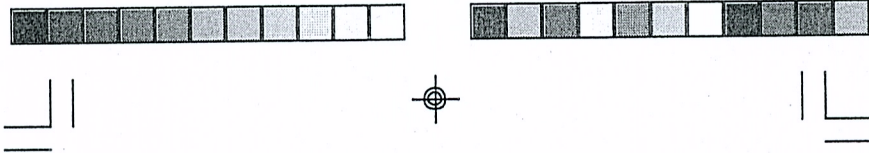
Net Weight: 5 lbs. (2.3 kg)

#8072

Manufactured for:
Gardens Alive![®], Inc.
5100 Schenley Place
Lawrenceburg, IN 47025
513-354-1483
www.GardensAlive.com



WA 61842-18-56872
AUG 17 2009



Surround® *At Home*® Crop Protectant

Surround At Home Crop Protectant forms a Barrier Film, which acts as a Broad Spectrum Crop Protectant for Home, Landscape, and Garden. Use for controlling damage from various Insect, Mite, and Disease Pests, Growth Enhancer, and Protectant against Sunburn and Heat Stress.

For External Household Use Only

Do not spray where a visible white film is undesirable or cannot be washed off such as porous wood, masonry, asphalt, and other valuable goods.

ACTIVE INGREDIENT:

Kaolin	95.0%
Other INGREDIENTS.....	5.0%
Total:	100.0%

Contains Non-Plant Food Ingredient:

Guaranteed Analysis
Active Ingredients
95% Kaolin
5% Inert Ingredients

KEEP OUT OF REACH OF CHILDREN

CAUTION

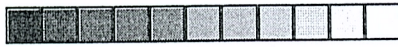
EPA Reg. No. 61842-18-56872

EPA Est. No. 56872-IN-001

Growth enhancer uses are not registered in California.

The use of Surround® at Home® in crop protection applications is covered by U.S. Patents: 6,027,740; 6,069,112; 6,110,869; and 6,156,327.

Manufactured for:
GardensAlive!®, Inc.
5100 Schenley Place
Lawrenceburg, IN 47025
513-354-1483
www.GardensAlive.com



FIRST AID	
If in eyes	<ul style="list-style-type: none"> • Hold eye open and rinse slowly and gently with water for 15-20 minutes. • Remove contact lenses, if present, after the first 5 minutes, then continue rinsing eye. • Call a poison control center or doctor for treatment advice.
HOT LINE NUMBER	
Have the product container or label with you when calling a poison control center or doctor or going for treatment. You may contact 1-800-424-9300 for emergency medical treatment information 24 hours a day 7 days a week.	

PRECAUTIONARY STATEMENTS

HAZARDS TO HUMANS AND DOMESTIC ANIMALS

CAUTION: Causes moderate eye irritation. Avoid contact with eyes or clothing. Wash thoroughly with soap and water after handling and before eating, drinking, chewing gum or using tobacco. Remove contaminated clothing and wash clothing before reuse.

ENVIRONMENTAL HAZARDS

Do not apply directly to water. Do not contaminate water when disposing of equipment wash water or rinsate.

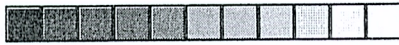
DIRECTIONS FOR USE

It is a violation of federal law to use this product in a manner inconsistent with its labeling.

I. GENERAL INFORMATION

Surround *At Home* protectant forms a mineral-based particle film intended for protection of crops, and plants in greenhouses, home landscapes and gardens. When Surround *At Home* is applied to plants, a dry white film results. Many pests are listed as suppressed, which means that full control may not be achieved, and supplemental methods will be needed to enhance the level of control. **Thorough, uniform, and consistent coverage is essential throughout the infestation or stress period.**

For crops that will not be washed where a residual white film is not desired, make applications early-season only. White residue at harvest can be minimized if applications to smooth skin crops like apples stop when the fruit is approximately 1/4 of its expected size.



Plant Response Precautions: Surround *At Home* keeps plant surfaces cooler and an advance or delay in maturity can result. Pome and stone fruit can have maturity delays of 3 to 7 days, especially in cool regions.

MIX INSTRUCTIONS

For Non-agitating Sprayer Tanks, Such as Handheld or Backpack Sprayers

The following mixing sequence must be followed:

1. Use Surround *At Home* powder at a rate of 1/4 to 1/2 lb. of Surround *At Home* powder per one gallon of water. One-half pound is approximately 3 cups. For sprayers difficult to shake, premix in a 5 gallon bucket, stir, and pour suspension into sprayer.
2. While stirring or swirling, slowly add Surround *At Home* powder into 1/4 to 1/2 of the water that will be used in the batch.
3. Mix thoroughly by shaking the closed container vigorously for 30 seconds.
4. Add tank mix pesticides, if any. See compatibility section below before adding any tank mix pesticides.
5. Add the remainder of the batch water and shake for an additional 30 seconds.
6. Shake the sprayer occasionally during application.
7. At the end of the application, spray until empty and flush system and nozzles or, blow air pressure out of the line and nozzle then store in a cool place. Apply the leftover mix within two weeks to avoid spoilage. Rinse the sprayer before next batch.

Compatibility:

Surround *At Home* is not generally affected by most other insecticides, miticides, and fungicides. However, to ensure compatibility test tank mixes before use. When mixing with other products, make up a small batch and observe slurry and film characteristics. Curdling, precipitation, lack of film formation, or changes in viscosity are signs of incompatibility. **Add tank mix pesticides after the Surround *At Home* has been added.**

Do not tank mix with other white mineral particulate products like diatomaceous earth or other sunburn materials.





General Application Instructions (see, also, specific crop use instructions):

Rates: Rate is dependent on the amount of foliage that needs to be covered.

Concentration (the amount of Surround *At Home* per 1 gallon of water): Use Surround *At Home* at concentrations of 1/4 to 1/2 lb. (or 1.5 to 3 cups) per gallon of water.

Coverage: Use sufficient spray volume to obtain thorough **near drip** coverage. Two or more applications are desirable for complete coverage. For optimal performance as an insecticide, applications must coat all portions of plant that are to be protected, including both sides of the leaves. If coverage is insufficient additional sprays are necessary. Dwarf, semi-dwarf, and otherwise well-pruned trees will be easier to cover than large trees. Optimum efficacy may be more difficult to achieve in large trees due to increased difficulty achieving thorough coverage.

Reapplication is generally required every 7-14 days. Intervals can be widened to 14 to 21 days later in the season when new growth diminishes.

Plant Color Change: Plant surfaces will typically turn a hazy white color after drying. Additional treatments will turn the plant surfaces a deeper white. This is normal, and is indicative of appropriate film formation.

Foliage Dryness: Do not apply to wet foliage.

When the dry foliage has lost its white appearance, reapplication is necessary. Heavy rainfall, new growth, and wind erosion will affect film quality. Reapply to re-establish coverage after heavy rain as soon as the foliage is dry. However, reapplication may not be necessary if all target surfaces remain thoroughly coated. Do not apply excessively thick coatings.

Non-Target Surfaces: Do not spray where the resulting visible white film will be undesirable or cannot be washed off, such as porous wood, masonry, asphalt, and other valuable goods.





Growth Enhancer, Sunburn and Heat Stress Protectant and Light Reflectant:

When applied at instructed rates and frequencies, benefits such as increased plant vigor and improved yields may occur on many crops. Under high ambient temperatures, *Surround At Home* reduces canopy temperature and, therefore, can help to reduce heat and water stress. When *Surround At Home* is used, many fruits have shown improved fruit color, soluble solids, smoothness, and size with less russet, dropping, sunburn and cracking.

Sunburn Reduction: Apply before conditions leading to sunburn occur. If initiating sprays for sunburn reduction where there have been no prior sprays, apply initial 1-2 applications at full rates no more than 7 days apart. Depending upon the length of the high heat period, three to four applications in total may be needed, with subsequent applications every 14-21 days. *Surround At Home* may be rubbed off by leaf movement making reapplication necessary.

II. CROP GROUPS

TREE FRUIT

Volume: Apply to near-drip. Do not apply to run-off to avoid waste and poor coverage.

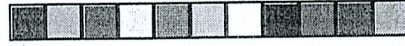
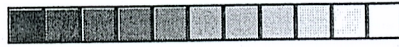
Concentration (the amount of *Surround At Home* per one gallon of water): Use concentrations of 1.5 to 3.0 cups of *Surround At Home* per gallon of water.

Pome Fruits

Such as apple, crabapple, quince, pear and loquat

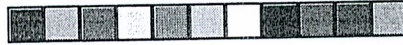
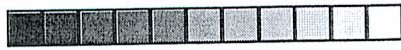
PEST	APPLICATION INSTRUCTIONS
Pear psylla	<ul style="list-style-type: none"> • Prebloom: Apply 3 applications, applying every 7-10 days at delayed dormant, but no later than green cluster bud. • Petal Fall: Apply 3 applications, applying every 7-14 days starting at first petal fall. • Spring populations can be reduced with a fall or winter application.
Insects	Suppression only.* Start before infestation and continue at 7-14 day intervals. Longer intervals will impair performance.





<p>Pear: cutworms, mealy bug, pear midge, pear rust mite, pear slug, pearleaf blister mite</p> <p>Apple: apple sucker, apple rust mite, climbing cutworm, eastern tent caterpillar, European apple sawfly, Gypsy moth, Japanese beetle, June beetle, lesser appleworm, leafminer, rosy apple aphid, spirea aphid, tufted apple bud moth</p> <p>Pear and Apple: aphid, crickets, European red mite, grasshoppers, green fruit worm, leafrollers, Lygus bug, Mormon cricket, periodical cicada, San Jose scale, stink bug, tarnished plant bug, thrips, two-spotted spider mite.</p>	
<p>Apple or Pear Diseases Cedar apple rust, fabrea leafspot, powdery mildew, sooty blotch</p>	<p>Suppression only.* Supplements are generally necessary especially in high pressure areas.</p>
<p>Over-wintering leafrollers, especially oblique-banded leafroller (OBLR)</p>	<p>Apply 2 sprays 7 days apart starting just prior to green tip or at initial emergence of leafroller larvae.</p>
<p>Leafhoppers</p>	<p>Apply first spray within 3 days of first petal fall or at initial infestation. Continue every 7-14 days during infestation period.</p>
<p>Laconobia</p>	<p>• Oviposition: Apply at least one spray at start of oviposition and a second spray within 5-7 days.</p>





	<ul style="list-style-type: none"> • Egg Hatch: Apply 2-3 sprays starting at initial egg hatch and continuing at 7 day intervals. • Surround <i>At Home</i> can be used for the later generation of laconobia if fruit will be thoroughly washed prior to picking or packing.
Apple maggot	Apply 2 sprays 7 days apart before expected oviposition or first detection of infestation. Continue applications every 7-14 days to keep fruit completely covered during egg laying period.
Codling moth (first generation only), oriental fruit moth, plum curculio	Suppression only.* Apply at first detection. Continue applications every 7 days to keep fruit completely covered during egg lay period.
Sunburn and heat stress	See General Information/Growth Enhancer, Sunburn and Heat Stress Protectant and Light Reflectant/Sunburn Reduction
* For complete control is needed, consider using supplemental controls.	



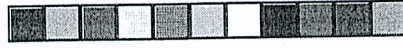
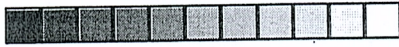
Horticultural Benefits

Surround *At Home* can often improve fruit quality (See General Information/Growth Enhancer, Sunburn and Heat Stress Protectant for general horticultural benefits) if applications start at petal fall and are continued up until harvest. Many pear cultivars, particularly Comice and Anjou varieties have shown improved improved fruit color, smoothness, and size with less russet when Surround *At Home* is used.

Diseases

Surround *At Home* can often enhance the efficacy of wettable sulfur and/or lime-sulfur against scab, powdery mildew, sooty blotch, and flyspeck. See Product Guides for specific mixture instructions. Fungicides, like sulfur, must be added to the tank after Surround *At Home* has been mixed in. It is especially important to keep small fruit covered.

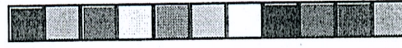
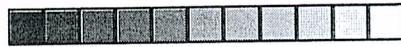




Stone Fruit
Such as apricot, cherry¹, nectarine, peach, plum, pluot,
plumcot and prune

PEST	APPLICATION INSTRUCTIONS
Japanese beetle, rose chafer	Start one week prior to expected infestation and follow with 3 to 4 applications at 5 - 7 day intervals.
Oblique banded leaf-roller (OBLR), thrips	Suppression* only for OBLR. Start at pink bud and continue applications at 5 - 7 day intervals through jacket split.
Leafhoppers including sharpshooters	Suppression only*. Start before expected infestation, if possible. <ul style="list-style-type: none"> • Prebloom: Apply at 7 - 14 day intervals up to bloom • Post harvest: Apply 2 or more applications at 7 - 14 day intervals
Aphid, cherry fruit flies, crickets, European red mite, European earwig, grasshoppers, June beetle, leafhoppers, lesser peach tree borer, naval orange worm, oriental fruit moth, peachtree borer, peach silver mite, peach twig borer, stink bugs, tarnished plant bug, two-spotted spider mite, tufted apple bud moth	Suppression only*. Start before expected infestation, if possible and continue at 7 - 14 day intervals.
Plum curculio	Suppression only*. Apply at 7 day intervals throughout egg laying period.





Sunburn and heat stress	See General Information/Growth Enhancer, Sunburn and Heat Stress Protectant and Light Reflectant/Sunburn Reduction
¹ For processing fruit only * For complete control is needed, consider using supplemental controls.	

Special Directions

Special Washing Considerations for Stone Fruit: For fresh fruit, special washing is required; especially for fuzzy peaches. Most residues wash off with brushing and forced water sprays. Prior to brushing, a pre-soak in approved fruit cleaning detergent is usually needed for fuzzy peaches. If fresh peaches cannot be washed as noted above, discontinue sprays when the fruit are approximately 3/4 inch in diameter. Residues do not affect processed fruit quality.

For cherries, discontinue applications when fruit are half size (approximately 1/4 inch) if no washing is available.

Citrus Fruits

Such as lemon, lime, grapefruit, mandarin, and orange

PEST	APPLICATION INSTRUCTIONS
Thrips	Start at pre-bloom. Continue at 5 - 7 day intervals throughout bloom. Post-bloom continue at 7 - 14 day intervals through infestation.
Leafhoppers including sharpshooters	<ul style="list-style-type: none"> • Apply every 7 - 14 days as infestation occurs. • Pre-harvest: Apply at least 2 applications 7 days apart for pre-harvest control of sharpshooters.
Aphids, citrus leaf miner, citrus psyllid, crickets, diaprepes root weevil, grasshoppers, mites	Suppression only*. Apply every 7 - 14 days as infestation occurs.



Sunburn and heat stress	See General Information/Growth Enhancer, Sunburn and Heat Stress Protectant and Light Reflectant/Sunburn Reduction
* For complete control is needed, consider using supplemental controls.	

Nut Crops

Volume: Apply to near-drip, not to excessive run-off.

Concentration (the amount of Surround *At Home* per 1 gallon of water):
Use concentrations of 1.5 to 3.0 cups of Surround *At Home* per gallon of water.

Tree Nuts

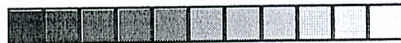
Such as almond, beech nut, Brazil nut, cashew, chestnut, filbert, hickory nut, macadamia nut, pecan, walnut and including pistachio

PEST	APPLICATION INSTRUCTIONS
Aphids such as pecan, black, and yellow aphid, codling moth, crickets, grasshoppers, husk fly, leafhoppers, mites, naval orange worm, peach twig borer, stink bug	Suppression only*. Start as infestation occurs. Apply every 7 - 14 days throughout infestation. For codling moth, apply a minimum of 2 sprays per generation.
Sunburn and heat stress	See General Information/Growth Enhancer, Sunburn and Heat Stress Protectant and Light Reflectant/Sunburn Reduction
* For complete control is needed, consider using supplemental controls.	

Small Fruits

Volume: Apply to near-drip. Do not apply to run-off to avoid waste and poor coverage. The volume of water/acre required will increase throughout the growing season in relationship to the increasing size of the crop and its foliage.





Concentration (the amount of Surround *At Home* per 1 gallon of water):
Use concentrations of 1.5 to 3.0 cups of Surround *At Home* per gallon of water.

Berries

Such as blackberry, raspberry, dewberry, boysenberry, loganberry, elderberry, blueberry, ribes such as currant and gooseberry and including cranberry

PEST	APPLICATION INSTRUCTIONS
Blackberry psyllid, crickets, European raspberry aphid, European red mite, grasshoppers, Japanese beetle, leafhoppers, leafrollers, plum curculio, rose chafer, two-spotted spider mite, thrips	Suppression only*. Begin applications after fruit set and prior to infestation, applying every 7 - 14 days.
Blueberry maggot	Suppression only*. Apply 2 sprays 7 days apart before expected infestation or first detection of infestation. Continue applications every 7 - 14 days during egg lay period.
Sunburn and heat stress	See General Information/Growth Enhancer, Sunburn and Heat Stress Protectant and Light Reflectant/Sunburn Reduction

* For complete control is needed, consider using supplemental controls.

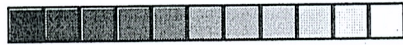
Special Directions

Apply only to fruits to be used for processing (cooking) as the white film will be difficult to remove completely. Only apply on berries up to the first three weeks after fruit set as trace residues will be difficult to remove after harvest.

Grapes

PEST	APPLICATION INSTRUCTIONS
Thrips	Apply 1 - 2 applications 7 days apart starting at bud break





Crickets, European red mite, two-spotted spider mite, rose chafer, omnivorous leaf-roller, grape berry moth, grape leafroller, grape leaf folder, grasshoppers, grape leaf skeletonizer, leaf hoppers, Japanese beetle, June beetle, thrips	Suppression only*. Start as infestation occurs, applying a minimum of 2 - 3 applications by applying every 7 - 14 days.
Leafhoppers including sharpshooter	Apply initial application as infestation occurs, applying at least 2 - 3 applications by applying every 7 - 14 days throughout the infestation
* For complete control is needed, consider using supplemental controls.	



Special Directions

Harvest parameters may be altered and maturity may be delayed especially in white varieties. Closely monitor harvest parameters to determine optimal time to harvest. Changes in harvest parameters can affect taste.

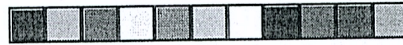
Do not spray table grapes from bloom to harvest. Infestations may be sprayed up to bloom, and again after harvest.

Garden Vegetables

Volume: Apply to near-drip. Do not apply to run-off to avoid waste and poor coverage.

Concentration (the amount of Surround *At Home* per 1 gallon of water): Use concentrations of 1.5 to 3.0 cups of Surround *At Home* per gallon of water.





Deer and rabbit damage may be reduced (suppressed) on garden vegetables. Start applications prior to animal feeding and maintain thorough coverage during feeding period. For plants on which Surround *At Home* does not adhere well, re-sprays as soon as possible are required following rainfall or protection will be lost.

Legume Vegetables
Such as bean, pea and soybean

PEST	APPLICATION INSTRUCTIONS
Alfalfa looper, aphids, bean leaf beetle, crickets, European red mite, fall armyworm, flea beetles, grasshoppers, Japanese beetle, leafhoppers, Lygus bug, Mexican bean beetle, stink bug, tarnished plant bug, three cornered alfalfa hopper, thrips, two-spotted spider mite, velvet-bean caterpillar	Suppression only*. Start prior to infestation, applying every 7 - 14 days throughout infestation.
Sunburn and heat stress	See General Information/Growth Enhancer, Sunburn and Heat Stress Protectant and Light Reflectant/Sunburn Reduction
* For complete control is needed, consider using supplemental controls.	



Special Directions

Only spray beans that are difficult to wash, such as string beans when beans are small.





Root and Tuber Vegetables
Such as potato, garden beet, sugar beet, horseradish, radish, rutabaga,
carrot, sweet potato and turnip

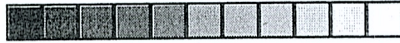
PEST	APPLICATION INSTRUCTIONS
Armyworm, Boll worm, Colorado potato beetle, crickets, cutworm, European red mite, flea beetles, grasshoppers, harlequin bug, imported cabbage worm, leafhoppers, tarnished plant bug, tomato horn worm, two-spotted spider mite	Suppression only*. Start prior to infestation, applying every 7 - 14 days throughout infestation.
Sunburn and heat stress	See General Information/Growth Enhancer, Sunburn and Heat Stress Protectant and Light Reflectant/Sunburn Reduction
* For complete control is needed, consider using supplemental controls.	



Fruiting Vegetables
Such as tomato, pepper¹ and including eggplant¹

PEST	APPLICATION INSTRUCTIONS
Aphids, Colorado potato beetle, crickets, European red mite, flea beetles, grasshoppers, leafhoppers, lace bugs, stink bugs, tarnished plant bug, tomato horn worm, tomato pin worm, two-spotted spider mite	Suppression only*. Start prior to infestation, applying every 7 - 14 days throughout infestation.
Sunburn and heat stress	See General Information/Growth Enhancer, Sunburn and Heat Stress Protectant/Sunburn Reduction
¹ For fresh use apply only up to 1/4 fruit size	
* For complete control is needed, consider using supplemental controls.	





Bulb Vegetables

Such as onion, garlic, leek and shallot

PEST	APPLICATION INSTRUCTIONS
Thrips	Suppression only*. Start prior to infestation, applying every 5 - 7 days throughout infestation. Good coverage down into the plant crown is essential for efficacy.
Sunburn and heat stress	See General Information/Growth Enhancer, Sunburn and Heat Stress Protectant and Light Reflectant/ Sunburn Reduction

* For complete control is needed, consider using supplemental controls.

Cucurbits

Such as cucumber, summer and winter squash, pumpkin, muskmelon, and watermelon

PEST	APPLICATION INSTRUCTIONS
Aphids, crickets, cucumber beetle, grass-squash vine borer, silver leaf whitefly, squash bugs	Suppression only*. Start prior to infestation, applying every 5 - 7 days, with the first two hoppers, applications 3 days apart.
Powdery mildew	Suppression only*. Apply every 7 - 14 days as required to maintain coverage.
Sunburn and heat stress	See General Information/Growth Enhancer, Sunburn and Heat Stress Protectant and Light Reflectant/ Sunburn Reduction

* For complete control is needed, consider using supplemental controls.

Brassica (Cole) Leafy Vegetables

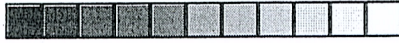
Such as broccoli, Brussels sprouts, cauliflower, collards, cabbage, mustard greens, canola and kohlrabi

PEST	APPLICATION INSTRUCTIONS
Crickets, flea beetles, grasshoppers, loopers	Suppression only*. Use only in early season to avoid residue at harvest. Apply every 7 - 10 days making sure to wet the plant surface completely. Spreading will be improved on waxy brassica surfaces, if the first application is tank mixed with 1/4 to a full rate of potassium fatty acids such as Safer® ¹ brand soap products.
Sunburn and heat stress	See General Information/Growth Enhancer, Sunburn and Heat Stress Protectant and Light Reflectant/ Sunburn Reduction

¹Registered trademark of Woodstream Corporation

* For complete control is needed, consider using supplemental controls.





Leafy Vegetables (non-Brassica)
Such as arugula, celery, lettuce, parsley, rhubarb, and spinach

PEST	APPLICATION INSTRUCTIONS
Aphids, armyworm, crickets, cutworms, flea beetles, grasshoppers, leafhoppers, loopers, sea chalcids, thrips, weevils	Suppression only*. Use only in early season to avoid residue at harvest. Start prior to infestation. Apply every 3 - 5 days to maintain adequate coverage throughout infestation.
Sunburn and heat stress	See General Information/Growth Enhancer, Sunburn and Heat Stress Protectant and Light Reflectant/Sunburn Reduction
* For complete control is needed, consider using supplemental controls.	

Asparagus

PEST	APPLICATION INSTRUCTIONS
Aphids, common and spotted asparagus beetle, crickets, grasshoppers, thrips	Suppression only*. Start prior to infestation. Apply every 7 - 10 days being sure to maintain coverage throughout infestation.
Sunburn and heat stress	See General Information/Growth Enhancer, Sunburn and Heat Stress Protectant and Light Reflectant/Sunburn Reduction
* For complete control is needed, consider using supplemental controls.	

Other Crops

Volume: Apply to near-drip. Do not apply to run-off to avoid waste and poor coverage. The volume of water per acre required will increase throughout the growing season in relationship to the increasing size of the crop and its foliage.

Concentration (the amount of Surround *At Home* per 1 gallon of water): Use concentrations of 1.5 to 3.0 sups of Surround *At Home* per gallon of water.





Corn	
PEST	APPLICATION INSTRUCTIONS
Aphids, armyworm, crickets, cutworms, flea beetles, grasshoppers, leafhoppers, loopers, sea chalcids, thrips, weevils	Suppression only*. Start prior to infestation. Apply every 5 - 10 days during infestation, with the first two applications 3 days apart. Tighten spray intervals during fast growing periods.
Sunburn and heat stress	See General Information/Growth Enhancer, Sunburn and Heat Stress Protectant and Light Reflectant/Sunburn Reduction
* For complete control is needed, consider using supplemental controls.	

Tropical Crops

Such as avocado, banana, guava, mango, papaya and pineapple

PEST	APPLICATION INSTRUCTIONS
Aphids, avocado looper, coconut bug, crickets, fruit flies, grasshoppers, leafhoppers, leafrollers, mango weevil, mites, thrips	Suppression only*. Start prior to infestation. Apply minimum of 2 applications 7 - 14 days apart during application.
Sunburn and heat stress	See General Information/Growth Enhancer, Sunburn and Heat Stress Protectant and Light Reflectant/Sunburn Reduction
* For complete control is needed, consider using supplemental controls.	

Special Directions

Initial application over waxy surfaces such as mango fruit may bead and not spread adequately. Spreading is improved if Surround *At Home* is tank mixed with 1/4 to a full rate of potassium fatty acid products (See instructions under Brassica section). Subsequent applications may not require the additional spreader.

Miscellaneous Crops

Such as artichoke, fig, hops, ginseng, globe, kiwifruit, olives, okra, paw paw, peanut, persimmon, pomegranate**, strawberry and water chestnut

** Not for use in CA unless accompanied by a Supplemental label

PEST	APPLICATION INSTRUCTIONS
Aphids, crickets, flea beetles, fruit flies, grasshoppers, leafhoppers, leafrollers, olive fruit fly, thrips, white flyweevil, mites	Suppression only*. Start prior to infestation. Spray every 7 - 14 days throughout infestation.
Sunburn and heat stress	See General Information/Growth Enhancer, Sunburn and Heat Stress Protectant and Light Reflectant/Sunburn Reduction





* For complete control is needed, consider using supplemental controls.

Non-food Crops

Ornamental Plants

Such as landscape plants, flowers and garden transplants

PEST	APPLICATION INSTRUCTIONS
Aphids, black vine weevil, crickets, cutworms, diabrotica beetle, earwig, grasshoppers, leafhoppers including sharpshooters, Japanese beetle, thrips, whitefly	Suppression only*. Start prior to infestation. Spray every 5 - 7 days throughout infestation.
Deer, rabbit	Suppression only*. Start prior to animal feeding and maintain coverage during feeding periods. For plants on which Surround <i>At Home</i> does not adhere well, re-spray as soon as possible following rainfall or protection will be lost.
Sunburn and heat stress	See General Information/Growth Enhancer, Sunburn and Heat Stress Protectant and Light Reflectant/ Sunburn Reduction
* For complete control is needed, consider using supplemental controls.	

Special Direstions

Flower and ornamental plants will obtain a white covering from applications of Surround *At Home*. If this is undesireable do not spray. On cut-flower plants, it is best to spray only the leafy foliage of the plant, so that cuttings are not affected.

STORAGE AND DISPOSAL

Do not contaminate water, food or feed by storage and disposal.

PESTICIDE STORAGE: Store in a dry, sheltered location and away from food or feed. Store the container in the upright position. Product is slippery when wet.

PESTICIDE DISPOSAL: If partly filled: Call you local solid waste agency or 1-800-CLEANUP (or equivalent organization) for disposal instructions. Unless otherwise instructed, discard in trash. Never pour unused product down any indoor or outdoor drain.

CONTAINER DISPOSAL: If empty: Do not reuse the container. Place in trash or offer for recycling if available.



**LIMITED WARRANTY AND LIMITATIONS OF LIABILITY
AND REMEDIES (CONDITIONS OF SALE)**

The directions on this label are believed to be reliable and must be followed carefully. Insufficient control of pests and/or injury to the crop to which the product is applied may result from the occurrence of extraordinary or unusual weather conditions, the failure to follow the label directions, or failure to follow good application practices, all of which are beyond the control of Gardens Alive, Inc. In addition, failure to follow label directions may cause injury to crops, animals, man or the environment. Gardens Alive, Inc. warrants that this product conforms to the chemical description on the label and is reasonably fit for the purpose referred to in the directions for use, subject to the factors noted above which are beyond the control of Gardens Alive, Inc. Except as warranted by this label, Gardens Alive, Inc. makes no other warranties or representations of any kind, express or implied, concerning the product, including no implied warranty of merchantability or fitness for any particular purpose. To the extent consistent with applicable law, the exclusive remedy against Gardens Alive, Inc. for any cause of action relating to the handling or use of this product is a claim of damage, and in no event shall damages or any other recovery of any kind against Gardens Alive, Inc. exceed the price of the product which causes the alleged loss, damage, injury, or other claim. To the extent consistent with applicable law, Gardens Alive, Inc. shall not be liable and any and all claims against Gardens Alive, Inc. are waived, for special, indirect, incidental, or consequential damages or expense of any nature, including, but not limited to, loss of profits or income, whether or not based on the negligence of Gardens Alive, Inc. breach of warranty, strict liability on tort, or any other cause of action. Gardens Alive, Inc. offers this product and the buyers and users accept it, subject to the foregoing conditions of sale and limitations of warranty, liability and remedies.



SURROUND® AT HOME® Crop Protectant

Surround® is a registered trademark of Tessenderlo Kerley, Inc.

