

5.250

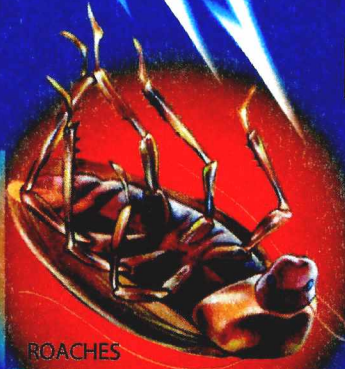
KNOCKOUT

READY-TO-USE

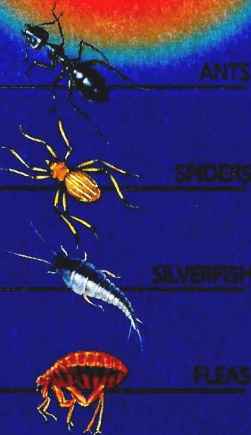
Indoor/Outdoor Insect Killer

KILLS HIDDEN BUGS

- **USE INDOORS** – Spray hiding places, cracks, and crevices.
- **USE OUTDOORS** – Treat around windows, doors, porches, screens, patios and garages.
- **Controls fleas and ticks on dogs.**



USE ON:



Active Ingredient:	
Permethrin*	0.25%
Inert Ingredients	99.75%
Total	100.00%
* Cis/trans ratio: Min. 35% (±), max. 65% (±) trans	

KEEP OUT OF REACH OF CHILDREN

CAUTION See back for additional Precautionary Statements.

NET CONTENTS 24 OZ. (0.710 liters)

KnockOut

OPEN HERE

Indoor/Outdoor Insect Killer

KILLS HIDDEN BUGS

- **Kills Cockroaches, Waterbugs, Scorpions, Millipedes, Centipedes, Spiders, Crickets and more.**
- **Controls fleas and ticks on dogs.**

PRODUCT FACTS

KILLS	Insects in and around the home.
USE ON	USE INDOORS - Spray hiding places, cracks and crevices. USE OUTDOORS - Treat around windows, doors, porches, screens, patios and garages.
AMOUNT TO USE	Ready-To-Use. Requires no mixing.

IN CASE OF EMERGENCY CALL 1-800-424-9300

Manufactured for Gro Tec, Inc.
P.O. Box 290 Madison GA 30650
Form 228-03
EPA Reg. No. 28293-261-59144
EPA Est. 59144-GA-1A, 44616-MO-1B,
67572-GA-1c
Subscript is first letter of
run code on container



file: 52395_book art
folder: 52395_Gro Tec KOI/024OZBK
colors: black, 012, 301, 485
barcode: upca, 100%, -39

created by customer
alt: 4-1-10 bm
size: 3.125"(w) x 5.25"(h)

**READ ENTIRE LABEL BEFORE EACH USE.
FOR PET USE - USE ONLY ON DOGS.
SHAKE WELL BEFORE USING.**

PRECAUTIONARY STATEMENTS HAZARDS TO HUMANS AND DOMESTIC ANIMALS

CAUTION: Wash thoroughly after handling and before smoking or eating. Avoid contamination of feed and foodstuffs. Remove pets and birds and cover fish aquaria before surface applications. Do not use on humans. Do not allow children or pets to contact treated areas until surfaces are dry. Sensitivities may occur after using ANY pesticide product for pets. If signs of sensitivity occur bathe your pet with mild soap and rinse with large amounts of water. If signs continue, consult a veterinarian immediately.

FIRST AID

IF IN EYES	<ul style="list-style-type: none">• Hold eye open and rinse slowly and gently with water for 15-20 minutes. Remove contact lenses, if present, after the first 5 minutes, then continue rinsing eye.• Call a poison control center or doctor for treatment advice.
IF ON SKIN OR CLOTHING	<ul style="list-style-type: none">• Take off contaminated clothing.• Rinse skin immediately with plenty of water for 15-20 minutes.• Call a poison control center or doctor for treatment advice.
IF SWALLOWED	<ul style="list-style-type: none">• Call a poison control center or doctor immediately for treatment advice.• Have person sip a glass of water if able to swallow.• Do not induce vomiting unless told to do so by a poison control center or doctor.• Do not give anything by mouth to an unconscious person.
IF INHALED	<ul style="list-style-type: none">• Move person to fresh air.• If person is not breathing, call 911 or an ambulance, then give artificial respiration, preferably mouth-to-mouth if possible.• Call a poison control center or doctor for further treatment advice.

Have the product container or label with you when calling a poison control center or doctor, or going for treatment.

ENVIRONMENTAL HAZARDS:

This product is extremely toxic to fish. To protect the environment, do not allow pesticide to enter or run off into storm drains, drainage ditches, gutters or surface waters. Applying this product in calm weather when rain is not predicted for the next 24 hours will help to ensure that wind or rain does not blow or wash pesticide off the treatment area.

DIRECTIONS FOR USE

It is a violation of Federal law to use this product in a manner inconsistent with its labeling.

Affix trigger, pump or other type sprayer to container for application. Do not transfer to another container. SHAKE WELL BEFORE USING.

INDOOR APPLICATION:

For spot application only. Do not use as a space spray indoors. Do not apply to classrooms while in use. In the home, all food processing surfaces and utensils should be covered during treatment or thoroughly washed before use. Exposed food/feed should be covered or removed.

SURFACE SPRAYING:

For control of **Cockroaches** (180 day/6 month control), **Waterbugs**, **Palmetto Bugs**, **Scorpions**, **Millipedes**, **Centipedes**, **Sowbugs**, **Pillbugs**, **Ants**, **Silverfish**, **Firebrats**, **Spiders**, **Crickets**, **Clovermites**, **Cheese Mites**, **Granary Weevils**, **Rice Weevils**, **Confused Flour Beetles**, **Rust Red Flour Beetles**, **Drugstore Beetles**, **Darkling Beetles**, **Meal Worms**, **Grain Mites** and **Cadollos**: Direct the spray into hiding places, cracks and crevices, and behind shelves and drawers. For silverfish, spray bookcases. For ants, spray trails, nests and points of entry.

To control Carpet Beetles: Spray edges of carpeting and under carpeting and rugs. Make localized application to floor and baseboards. Spray directly into cracks, crevices and infested areas of shelving. Spray to the point of dampness but not run-off.

To control Fleas (adults and larvae) and Ticks (adults and larvae): Thoroughly spray infested areas, pet beds, resting quarters, nearby cracks and crevices, along and behind baseboards, moldings, window and door frames, and entire areas of floor and floor covering. Spray to the point of dampness but not run-off. Fresh bedding should be placed in animal quarters following treatment. Allow to dry thoroughly before allowing pets to contact treated areas.

FOR USE ONLY ON DOGS:

Do Not Use on Cats or Kittens

ON DOGS

To control fleas, ticks and lice: Start spraying at the tail, moving the dispenser rapidly and making sure that the animal's entire body is covered, including the legs and underbody. While spraying, fluff the hair so that the spray will penetrate to the skin. Make sure spray wets thoroughly, but do not saturate animal. Do not spray into eyes or face. Avoid contact with genitalia. Use protective gloves or mitts when applying product. Reapply every two (2) weeks as needed. NOTE: Do not use on puppies under 12 weeks of age. Consult a veterinarian before using this product on debilitated, aged, pregnant or nursing animals or animals on medication.

OUTDOOR APPLICATION:

Not for use on plants being grown for sale or commercial seed production or for research purposes.

TO CONTROL TICKS (PERIMETER TREATMENT): Use this product as a residual treatment to control ticks including the Deer Tick (*Ixodes dammini*), Lone Star Tick (*Amblyomma americanum*), Brown Dog Tick (*Rhipicephalus sanguineus*), American Dog Tick (*Dermacentor variabilis*) and Western Black-legged Tick (*Ixodes pacificus*). For each area listed below, apply until surface is wet (approximately 1 gal/750 - 1000 sq. ft.).

Treat around windows and doors, porches, screens, eaves, patios, garages, under stairways and in crawl spaces where these pests may enter.

Treat a band of vegetation and leaf litter 6 to 10 feet wide around and the outside of buildings to help control ticks occurring there. To help control ticks in outdoor activity areas, treat a band of vegetation and leaf litter 6 - 10 feet wide and adjacent to activity areas, especially where dense vegetation occurs.

STORAGE AND DISPOSAL

Do not contaminate water, food or feed by storage or disposal.

PESTICIDE STORAGE: Store in a cool, dry area away from heat or open flame.

Store above 32°F.

PESTICIDE DISPOSAL: If partly filled - Call your local solid waste agency for disposal instructions. Never place unused product down any indoor or outdoor drain.

CONTAINER DISPOSAL: If empty - Nonrefillable container. Do not reuse or refill this container. Place in trash or offer for recycling if available.

To the extent consistent with applicable law, buyer assumes all risks of use, storage or handling of this product not in strict accordance with directions given herewith.

IN CASE OF EMERGENCY CALL: 1-800-424-9300

file: 52396_base art
folder: 52396_Gro Tec KOI/0240ZBK
colors: black

created: by customer
alt: 4-1-10 bm
size: 4"(w) x 5.25"(h)