



# MOLEMAX<sup>®</sup>

## Mole & Vole Repellent

Repels moles, gophers, voles,  
armadillos, rabbits, ground squirrels  
& other burrowing animals

Granules 

Use on lawns, gardens and planting beds

Treats up to 2,500 sq. ft.



Penetrates deep into the soil  
where animals burrow



**ACTIVE INGREDIENT:**

Castor Oil ..... 10.0%

\*INERT INGREDIENTS: ..... 90.0%

TOTAL: ..... 100.0%

\*Inert Ingredients: Fuller's earth and Water

**People & Pet Safe**

24331016 when used as directed

Keep Out Of Reach Of Children

**CAUTION** (See back panel for additional  
Precautionary Statements)

Net Weight 5 LBS. (2.27 kg)

# MOLEMAX<sup>®</sup>

## Mole & Vole Repellent

✓ Tunnel penetrating formula    ✓ Stops the digging

Effectively rids lawns and ornamental planting areas of Moles, Voles, Gophers, Armadillos, Ground Squirrels, Groundhogs and other burrowing animals.

This product can be used around children and pets, when used as directed. This product is biodegradable and will not harm lawns, ornamentals, flowerbeds, or other desirable plants.

### DIRECTIONS FOR USE

Apply 1 lb. of product per 500 sq. ft. and reapply every 2-3 months to ensure consistent repellency. 5 lbs. treats up to 2,500 sq. ft. This product can be applied directly from the container.

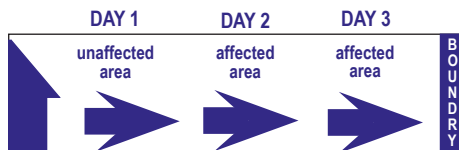
### FOR LAWNS

Locate active mole areas and runways to determine which way to push the moles out of your yard. Next, protect the areas that are not yet invaded by the moles. Then, direct the moles away from the lawn by treating the lawn in stages.

**Day 1:** Spread the granules over the areas not yet invaded by the moles. Lightly water in the granules for approximately 10-15 minutes after application.

**Day 2:** Spread the granules over the second area away from the undamaged lawn and towards the boundary of the lawn. Lightly water in the granules for approximately 10-15 minutes on the same area as day 1, PLUS the second area to get the moles moving.

**Day 3:** Spread the granules over the third area away from the areas previously applied and towards the boundary of the lawn. Lightly water in the granules for approximately 10-15 minutes on the same areas as day 1 and 2, PLUS the third area.



**TIP:** Throughout the process, punch holes into the mole tunnels every 4-6 feet and place 2-4 tablespoons of the granules directly into the tunnel.

### FOR ORNAMENTAL GARDEN BEDS

Sprinkle product in and around garden bed. Lightly water in after application. For new plantings, apply 2 tablespoons to the bottom of the planting hole and 3-4 tablespoons to the soil mix before back filling.

### FOR BULBS

After placing bulb in hole, apply 1 tablespoon of product into the hole, making sure granules surround the bulb then backfill with soil.

### RESTRICTIONS

Do not apply directly to water. Intended for outdoor use only.

This product is exempt from registration with the Federal EPA under section 25(b) of FIFRA, and as such, is not registered with the Environmental Protection Agency. Bonide represents that the ingredients qualify for exemption from registration under FIFRA.

### Buyer's Guarantee Limited to Label Claims

#### Satisfaction guaranteed or your money back

If not completely satisfied, please submit a refund request. Please send a copy of the receipt, the back label of the product that contains the UPC Code and a note explaining why you were dissatisfied. Send to, Bonide Products, Inc., Attn: Refund Request, 6301 Suttiff Road, Oriskany, NY 13424. Bonide will not be liable for any damage, direct or incidental. Refund or replacement product is Bonide's only obligation.

### CAUTION Keep out of Reach of Children

#### STORAGE AND DISPOSAL

Store and transport in an upright position. Store only in original container, in a dry place inaccessible to children and pets. Do not reuse empty container. Discard empty container in trash.

#### First Aid and User Precautions

**CAUTION:** Product can cause moderate eye irritation. For certain individuals, skin irritation may occur. In case of eye contact, flush with plenty of water, seek medical attention if irritation persists. In case of skin irritation, wash area thoroughly with soap and water, seek medical attention if irritation persists.

Bonide Products, Inc.  
6301 Suttiff Road  
Oriskany, NY 13424  
(315) 736-8231



xxxxxxx