

PERMA-GUARD CRAWLING INSECT CONTROL™

EPA Reg. No. 73729-1-67197 EPA Establishment No. 67197-UT-001

ACTIVE INGREDIENTS:

Silicon dioxide, from diatomaceous earth.....	85%
Other element oxides	10%
Moisture	5%
Total	100%

Effective and long lasting when kept dry.

Kills Cockroaches, Ants, Earwigs, Silverfish, Beetles, Slugs and Other Crawling Insects.

An effective addition for insect control, by physical action, for suppressing insect damage to stored grain.

KEEP OUT OF REACH OF CHILDREN

CAUTION

PRECAUTIONARY STATEMENTS
HAZARDS TO HUMANS AND DOMESTIC ANIMALS

CAUTION: Causes moderate eye irritation. Avoid contact with eyes. Use adequate ventilation and avoid breathing dust. Wear a suitable dust mask approved by NIOSH/MSHA when using this product during prolonged exposure.

DIRECTIONS FOR USE:

It is a violation of Federal Law to use this product in a manner inconsistent with it's Labeling.

Diatomaceous Earth is a mechanical insect killer. Insects cannot become immune to its action. Insects come in contact with this powder and die within 48 hours.

(OTHER USES (INDOOR AND OUTDOOR APPLICATIONS))

CRAWLING INSECT CONTROL is intended for application with a hand duster, power duster or other similar means for application to areas where crawling insects are found. Apply CRAWLING INSECT CONTROL t to cracks and crevices with the use of a bulbous duster or other suitable equipment. Apply lightly and uniformly.

Indoor use: Cockroaches, Ants, Earwigs, Millipedes and Centipedes, Crickets and Silverfish. Lightly coat a thin layer of CRAWLING INSECT CONTROL in areas where these pests are found and may hide such as cracks and crevices, behind and beneath refrigerators, cabinets, stoves, garbage cans and in and around sewer pipes and drains, window frames and in attics and basements. Dust insects directly if possible. Repeat treatment regularly.

Fleas: Thoroughly treat floor and bedding in and around pets' sleeping quarters. Treat surrounding cracks and crevices, baseboards, carpeting and wherever fleas are suspected.

Carpet Beetles: Dust along baseboards, carpet edges, under carpeting, furniture, in closets and shelving where these insects are seen or suspected.

Bedbugs: Dismantle bed. Use CRAWLING INSECT CONTROL in joints, crevices and where rungs are inserted. See that all interior areas are dusted. Dust mattresses especially folds and edges. All cracks and crevices in the bedroom should be treated.

Outdoor use: Cockroaches, Earwigs, Grasshoppers, Ants, Crickets and other crawling insects: Lightly coat a thin layer of CRAWLING INSECT CONTROL in areas where these insects are found such as patios, outdoor sills, window and door frames. Dust around foundations, along ant trails and around sewer pipes and drains. Repeat treatment as necessary.

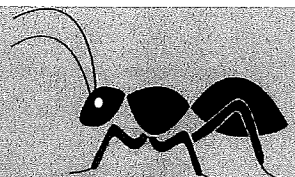
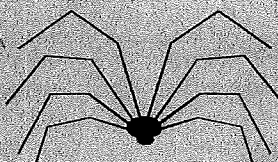
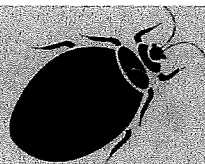
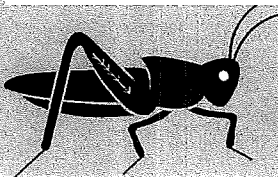
Manufacturer makes no warranty, expressed or implied, regarding the performance of this product in the absence of control over how it is used.

STORAGE AND DISPOSAL

STORAGE: Store in a cool, dry area

PESTICIDE DISPOSAL: Wastes resulting from the use of this product may be disposed of on site or at an approved waste disposal facility.

CONTAINER DISPOSAL: **If empty:** Do not reuse this container. Place in trash or offer for recycling if available. **If partly filled:** Call your local solid waste agency or 1-800-CLEANUP for disposal instructions. Never place unused product down any indoor or outdoor drain.



all natural ingredients
PERMA-GUARD™
Pure Diatomaceous Earth Products

Net Weight
50 lbs

Bountiful, UT (801)-726-7107

