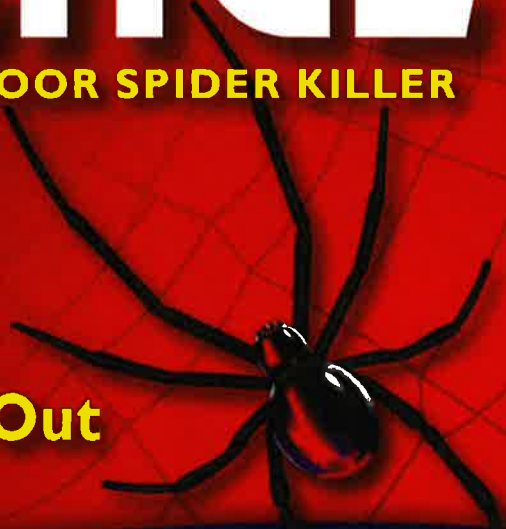


# MISS MUFFET'S™ REVENGE

PERIMETER & INDOOR SPIDER KILLER

**Kills Spiders Inside  
Keeps Spiders Out**



**Long Residual Spider Control**  
Creates a Barrier to Spiders  
For Residential Indoor and Outdoor Use Only

**WET & FORGET®**  
NET CONTENTS: 0.5 GALLON (1.89L)

**KEEP OUT OF REACH OF CHILDREN**  
**CAUTION: SEE BACK PANEL FOR PRECAUTIONARY STATEMENTS AND FIRST AID**

ACTIVE INGREDIENT:	
Bifenthrin* .....	0.05%
OTHER INGREDIENTS: .....	99.95%
TOTAL: .....	100.00%

\*Cis isomers 97% minimum, trans isomers 3% maximum

5.67



# MISS MUFFET'S™ REVENGE

## PERIMETER & INDOOR SPIDER KILLER

**Kills Spiders.** Up to 12 month control indoors for Spiders (excluding Black Widow and Brown Recluse).

**Notice:** Buyer assumes all risks of use, storage or handling of this product not in accordance with directions.

**DIRECTIONS FOR USE:** It is a violation of Federal law to use this product in a manner inconsistent with its labeling.

**To Attach Sprayer:** Open flip cap and firmly insert hose tip. Hold sprayer 12 inches from surfaces being sprayed.

**For Indoor Applications:** Apply a 4-inch band along the interior of your home in areas where spiders are a recurring problem. Spray until slightly wet without soaking.

**For Outdoor Applications:** Apply a 12-inch band along the exterior perimeter of your home. Spray until slightly wet without soaking.

After each use turn sprayer nozzle to 'OFF' position and snap back into bottle to avoid leaks. Once trigger is connected store and transport in upright position to avoid leakage through breather hole.

**After You Apply:** People and pets may re-enter treated areas after spray has dried • Thoroughly wash all food processing surfaces and utensils with soap and water before reuse • For long lasting residual control leave spray undisturbed. The product will keep killing for up to 12 months.

### PRECAUTIONARY STATEMENTS:

#### HAZARDS TO HUMANS AND DOMESTIC ANIMALS

**CAUTION:** Causes moderate eye irritation. Avoid contact with eyes or clothing. Wash thoroughly with soap and water after handling and before eating, drinking, chewing gum, using tobacco or using the toilet.

**ENVIRONMENTAL HAZARDS:** This pesticide is extremely toxic to fish and aquatic invertebrates. To protect the environment, do not allow pesticide to enter or run off into storm drains, drainage ditches, gutters or surface waters. Applying this product in calm weather when rain is not predicted for the next 24 hours will help to ensure that wind or rain does not blow or wash pesticide off the treatment area.

Drift and run-off from treated areas may be hazardous to aquatic organisms in neighboring areas. Care should be used when spraying to avoid fish and reptile pets in and around ornamental ponds. This product is highly toxic to bees exposed to direct treatment or residues on blooming plants. Do not apply this product or allow it to drift to blooming plants if bees are visiting the treatment area.

#### PHYSICAL OR CHEMICAL HAZARDS:

Do not apply this product in or on electrical equipment due to the possibility of shock hazard.

### STORAGE AND DISPOSAL:

**STORAGE:** After each use, turn sprayer nozzle to off position and snap back into bottle to avoid leaks. Store in original container in areas inaccessible to children. Protect container from freezing.

**DISPOSAL:** Nonrefillable container. Do not reuse or refill this container.

**If Empty:** Place in trash or offer for recycling if available.

**If Partly Filled:** Call your local solid waste agency for disposal instructions. Never place unused product down any indoor or outdoor drain.

**FIRST AID: IF IN EYES:** Hold eye open and rinse slowly and gently with water for 15-20 minutes. Remove contact lenses, if present, after first 5 minutes, then continue rinsing eye. Call a poison control center or doctor for treatment advice. Have the container or label with you when calling a poison control center or doctor, or going for treatment.

In case of transport or medical emergency, call CHEMTREC at 1-800-424-9300.



Distributed by **Wet & Forget USA**, a New Zealand Limited Partnership.  
P.O. Box 5805, Elgin, Illinois, 60121, USA. TOLL FREE: 888-727-8524  
sales@wetandforget.com WetandForget.com

**MADE IN THE USA**

EPA Reg. No. 84115-2-85342 EPA Est. No. 58880-GA-1

**WET & FORGET®**