



Temprid[®]
READY-TO-SPRAY

INSECTICIDE

CONTROLS: Ants (excluding fire ants), bed bugs, black widow spiders, boxelder bugs, brown recluse spiders, brown widow spiders, carpenter ants, carpenter bees, carpet beetles, centipedes, clothes moths, cluster flies, cockroaches, crickets, earwigs, elm leaf beetles, firebrats, fleas, flies, fruit flies, flour beetles, globular stink (kudzu) bugs, gnats, grain weevils, hide beetles, house flies, leather beetles, millipedes, mosquitoes, moths, multicolored Asian lady beetles, phorid flies, pill bugs, sciarid flies (fungus gnats), scorpions, silverfish, sow bugs, spiders, springtails, stable flies, ticks, wood-infesting beetles, and wasps.

FOR USE IN AND AROUND: Apartment buildings, bakeries*, bottling facilities*, breweries*, cafeterias*, correctional facilities, factories, hospitals, hotels, houses, industrial buildings, kitchens, laboratories, livestock housing, pet kennels, manufacturing establishments, nursing homes, poultry houses*, processing and packing plants*, restaurants*, schools, stores, warehouses, and modes of transport (airplanes, automobiles, buses, marine vessels, rail cars, trailers, trucks).

* non-food/non-feed areas

Dual mode of action: contact activity and systemic action

Control of hard to kill pest such as spiders, ants (excluding fire ants), and bed bugs

Kills bed bugs resistant to pyrethroid insecticides

Kills bed bug eggs

Controls bed bugs for up to 6 months on wooden, fabric or upholstered surfaces

Will not damage paints, plastics, fabrics, or other surfaces where water alone causes no damage

ACTIVE INGREDIENTS:

Imidacloprid, 1-[6-Chloro-3-pyridinyl)methyl]-N-nitro-2-imidazolidinimine	0.050%
β-Cyfluthrin, Cyano(4-fluoro-3-phenoxyphenyl)methyl 3-(2,2-dichloroethenyl)-2,2-dimethyl-cyclopropanecarboxylate	0.025%
OTHER INGREDIENTS:	99.925%

TOTAL:

100.000%

EPA Reg. No. 432-1527

**STOP - Read The Label Before Use.
KEEP OUT OF REACH OF CHILDREN**

For **MEDICAL** and **TRANSPORTATION** Emergencies ONLY Call 24 Hours A Day 1-800-334-7577
For **PRODUCT USE** Information Call 1-800-331-2867

PRECAUTIONARY STATEMENTS

ENVIRONMENTAL HAZARDS

This pesticide is extremely toxic to wildlife, fish, and aquatic invertebrates. Care should be used when spraying around ornamental ponds. Do not apply directly to water or to areas where surface water is present or intertidal areas below the mean high water mark.

PHYSICAL & CHEMICAL HAZARDS

Contents under pressure. Do not puncture or incinerate container. Exposure to temperatures above 120°F may cause bursting. Do not spray directly into any electrical equipment such as radios, televisions, computers, etc. (where there is exposed wiring or contact points) due to the possibility of short circuits and shock hazard.

DIRECTIONS FOR USE

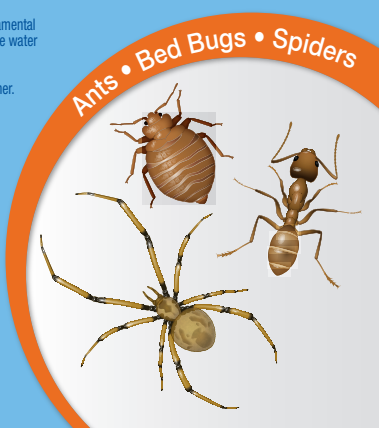
It is a violation of federal law to use this product in a manner inconsistent with its labeling. Shake well before use.

Net Contents:

15 Fl Oz
80867395
80876777C 140123AV1

Produced for:

Bayer Environmental Science
A Division of Bayer CropScience LP
2 T. W. Alexander Drive
Research Triangle Park, NC 27709



For indoor or outdoor use as either a crack and crevice injection or spot treatment. Use this product with the supplied actuator or injection tubes; this product can also be used in aerosol application equipment.

Application Restrictions:

- Do not contact treated surfaces until dry. People and pets may re-enter after the treated area is dry.
- Do not apply in food/feed areas of food and feed handling establishments.
- Do not apply in classrooms, hospital, and/or nursing home rooms while they are occupied.
- Do not treat areas of furniture or upholstery where prolonged contact with humans will occur.
- Do not spray bed linens or other materials which come in direct contact with occupants of the bed.
- In the home, cover or thoroughly wash all food processing surfaces and utensils following treatment. Cover exposed food or remove from area being treated.
- Do not apply directly to impervious horizontal surfaces such as sidewalks, driveways, and patios except as a spot or crack and crevice treatment. During application, do not allow pesticide to enter or run into storm drains, drainage ditches, gutters, or surface waters.
- All outdoor applications must be limited to spot or crack and crevice treatments only.
- Do not apply this product, by any application method, to linden, basswood, or other Tilia species.

When to apply: Apply when pests are seen or found. Reapply every 7 to 10 days until infestation is eliminated.

Crack and crevice treatment: Inject into cracks and crevices or void spaces where insects may be harboring, living, and breeding. Place injector tip into cracks, crevices, holes, and other small openings.

In light infestations or maintenance treatments, move the injection tube along cracks and crevices at the rate of 1 linear foot per second. For heavy infestations or clean-out treatments, move the injection tube along cracks and crevices at the rate of 6 inches per second. In enclosed void spaces, after calculating the void's cubic area, apply at a rate of 2 seconds per cubic feet. Several holes may be required in long-running voids.

Spot treatment: Hold nozzle between 12 to 18 inches from the surface to be treated. Release product at a rate of 4 seconds per 2 square feet. Each spot treatment must not exceed 2 square feet.

Crawling pests: Indoors, treat into and around known or suspected pest harborage and entry points, such as around water pipes and other utility lines, doors, windows, behind baseboards and molding, behind cabinetry and in cracks and crevices in cabinets, drawers and shelves, beneath and behind refrigerators, washing machines, and stoves. Make spot treatments in corners, to flooring beneath furniture, in closets and storage areas.

Outdoors, apply as a crack and crevice or spot treatment to surfaces on buildings, porches, patios, and other structures, openings around doors and windows, eaves and attic vents, utility entry points, weep holes, soffit areas and other exterior openings (including foundation cracks or drilled holes) where these pests may enter the structure or where they have been seen or found, or can find shelter.

Bed bugs: Spray bugs and eggs directly wherever possible; this product kills bed bugs that are directly treated and young nymphs emerging from eggs are killed by dried residues.

Remove linens and wash before reuse. On infested mattresses, apply only as spot treatment to tufts, seams, folds, and edges until moist; allow mattress to dry before remaking bed. Apply to bedsprings, box springs, and the interior of bed frames or headboards, including all cracks and joints.

When upholstered furniture is infested, apply as spot treatment only to the infested tufts, seams, folds and edges.

Apply as a crack and crevice treatment to all baseboards, moldings, beneath floor coverings and carpets, closets, shelves, curtains, furniture and picture frames that may provide harborage to bed bugs. Inside empty luggage, apply to seams, folds and edges until moist; remove all clothes and other articles from luggage before application and allow treated areas to thoroughly dry before use.

Ants (excluding fire ants): Indoors, apply to trails on walls or baseboards, around pipes, under cabinets, and other places where ants are active, but try to follow trails back to where ants may be nesting or entering the structure and treat these locations.

Outdoors, treat around windows and doors, along sidewalks, or other areas where ants are seen. Locate and treat ant nests, if possible; follow trails of foraging workers, check under objects near the structure, and inspect other likely nest sites. Where ant nests are located in tree hollows or non-structural wooden construction (e.g.; posts, fences, decks), treat the interior cavity and/or the nest site by injecting a sufficient volume of product.

Ticks and fleas: Apply spot treatments on and around pet sleeping quarters and bedding, and as a crack and crevice or void treatment around the pet's habitat. Treat carpeting, furniture, and floor coverings where fleas and ticks are found. One application will kill adult fleas for 2 to 3 months, and aids in control of larval fleas for up to 1 month.

Flying insect pests: Apply to surfaces where house flies or other listed flying insects congregate, collect or rest.

Wasps: Make applications directly into nests. Remove and destroy treated nests if possible, or retreat nests as necessary.

Carpenter bees: Apply the spray directly into gallery entrance holes. Exterior wood surfaces may be treated to prevent nest cavity excavation by adult carpenter bees.

Occasional or fall invaders: Apply directly to listed insects that have congregated around doors, windows or similar areas where they may enter structures.

Wood-infesting beetles: Locate active galleries. Penetrate the gallery system by drilling holes to receive the injector tip. Inject spray into the gallery system. Drill holes in commonly occupied areas should be sealed after treatment. Avoid drilling (to access voids) where electrical wiring, plumbing lines, etc. are located.

For inaccessible surfaces, drill and treat the interior of structural voids. Apply the spray to the wood surface using sufficient volume to cover the surface, but avoid applying to the point of runoff. When spraying wood surfaces overhead in living areas, cover surfaces below the treated area with plastic sheeting or similar material.

STORAGE AND DISPOSAL

Do not contaminate water, food, or feed by storage or disposal.

PESTICIDE STORAGE:

Store in a cool, dry area. Store away from food and pet food.

PESTICIDE DISPOSAL: Do not puncture or incinerate! Non-refillable container.

CONTAINER HANDLING:

Do not reuse or refill this container.

If empty: Place in trash or offer for recycling if available.

If partly filled: Call your local solid waste agency for disposal instructions.

IMPORTANT: READ BEFORE USE

Read the entire Directions for Use, Conditions, Disclaimer of Warranties and Limitations of Liability before using this product. If terms are not acceptable, return the unopened product container at once.

By using this product, user or buyer accepts the following Conditions, Disclaimer of Warranties and Limitations of Liability.

CONDITIONS: The directions for use of this product are believed to be adequate and must be followed carefully. However, it is impossible to eliminate all risks associated with the use of this product. Crop injury, ineffectiveness or other unintended consequences may result because of such factors as weather conditions, presence of other materials, or the manner of use or application, all of which are beyond the control of Bayer CropScience LP. All such risks shall be assumed by the user or buyer.

DISCLAIMER OF WARRANTIES: TO THE EXTENT CONSISTENT WITH APPLICABLE LAW, BAYER CROPSCIENCE LP MAKES NO OTHER WARRANTIES, EXPRESS OR IMPLIED, OF MERCHANTABILITY OR OF FITNESS FOR A PARTICULAR PURPOSE OR OTHERWISE, THAT EXTEND BEYOND THE STATEMENTS MADE ON THIS LABEL. No agent of Bayer CropScience LP is authorized to make any warranties beyond those contained herein or to modify the warranties contained herein. TO THE EXTENT CONSISTENT WITH APPLICABLE LAW, BAYER CROPSCIENCE LP DISCLAIMS ANY LIABILITY WHATSOEVER FOR SPECIAL, INCIDENTAL OR CONSEQUENTIAL DAMAGES RESULTING FROM THE USE OR HANDLING OF THIS PRODUCT.

LIMITATIONS OF LIABILITY: TO THE EXTENT CONSISTENT WITH APPLICABLE LAW, THE EXCLUSIVE REMEDY OF THE USER OR BUYER FOR ANY AND ALL LOSSES, INJURIES OR DAMAGES RESULTING FROM THE USE OR HANDLING OF THIS PRODUCT, WHETHER IN CONTRACT, WARRANTY, TORT, NEGLIGENCE, STRICT LIABILITY OR OTHERWISE, SHALL NOT EXCEED THE PURCHASE PRICE PAID, OR AT BAYER CROPSCIENCE LP'S ELECTION, THE REPLACEMENT OF PRODUCT.

Bayer (reg'd), the Bayer Cross (reg'd), Temprid[®] and Backed by Bayer[™] are trademarks of Bayer.

Bayer

DOT 2Q M5749 DSC

