

**Easy
to Use!**

**Calibrated,
No Settings!**

Ready2Go
SPREADER

GREENVIEW®

**WEED & FEED
WITH Preen**

- Helps lawns retain water to **protect against heat & drought**
- Feeds your lawn **up to 8 weeks**
- Apply when listed weeds are growing in **spring or early fall**

**KILLS OVER
250 WEEDS**
as listed

ACTIVE INGREDIENTS:	
2,4-D, 2-ethylhexyl ester.....	1.108%
Mecoprop-p acid.....	0.167%
Dicamba acid.....	0.071%
OTHER INGREDIENTS:	98.654%
TOTAL ..	100.000%

THIS PRODUCT CONTAINS:

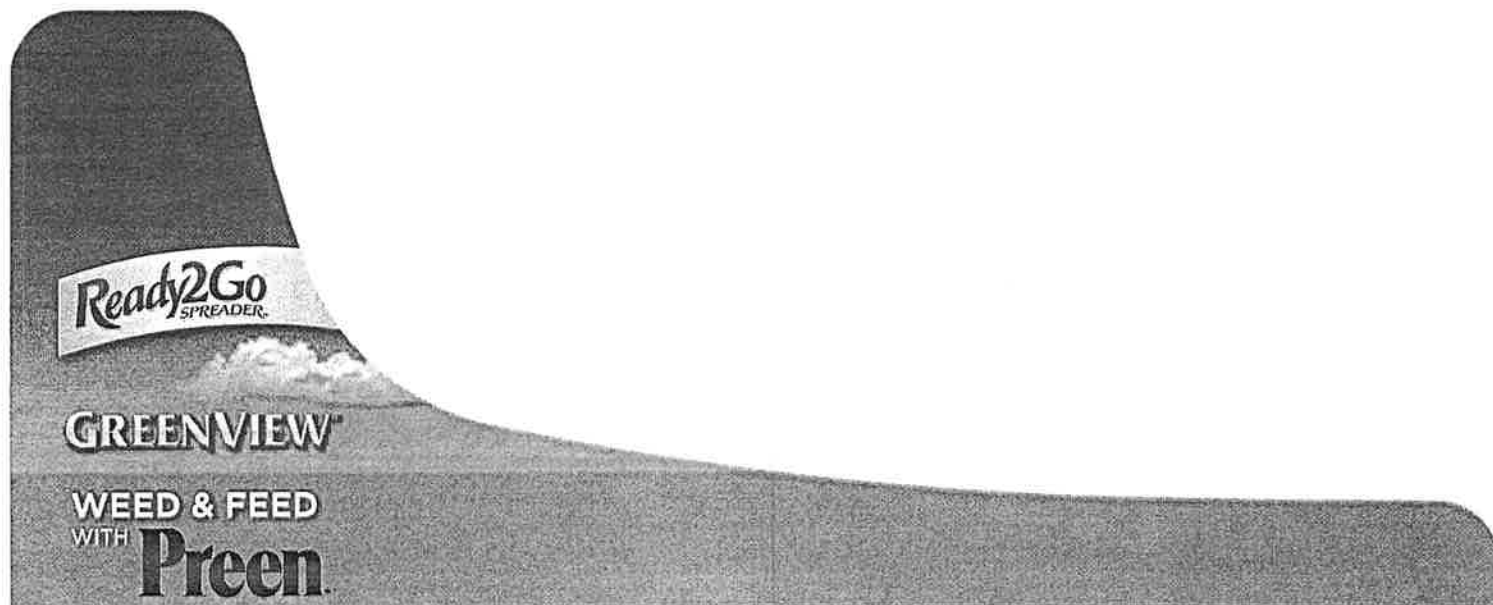
14.70 lb 2,4-dichlorophenoxyacetic acid equivalent per ton or 0.735%. CAS 1928-43-4.
3.34 lb (+)-(R)-2-(2-methyl-4-chlorophenoxy) propionic acid equivalent per ton or 0.167%. CAS 16484-77-8.
1.42 lb 3,6-dichloro-o-anisic acid equivalent per ton or 0.071%. CAS 1918-00-9

Isomer Specific by AOAC Methods
TRIMEC is a registered trademark
of PBI/Gordon Corporation.

**KEEP OUT OF REACH
OF CHILDREN
CAUTION**

See container label for First Aid and
additional Precautionary Statements

NET WEIGHT 7 lbs. (3.17 kg)
Covers 2,500 sq. ft.



**STOP! READ THE ENTIRE LABEL FIRST. OBSERVE ALL PRECAUTIONS
AND FOLLOW DIRECTIONS CAREFULLY.**

**PRECAUTIONARY STATEMENTS
HAZARDS TO HUMANS AND DOMESTIC ANIMALS
CAUTION**

Causes moderate eye irritation. Avoid contact with eyes or clothing. Wash thoroughly with soap and water after handling and before eating, drinking, chewing gum, using tobacco or using the toilet.

FIRST AID

If in eyes: • Hold eye open and rinse slowly and gently with water for 15 - 20 minutes.
• Remove contact lenses, if present, after the first 5 minutes, then continue rinsing eye.
• Call a poison control center or doctor for treatment advice.

Have the product container or label with you when calling a poison control center or doctor or going for treatment. For Emergency Medical Treatment Information call (888)208-1368.

ENVIRONMENTAL HAZARDS

This pesticide is toxic to fish and aquatic invertebrates and may adversely affect non-target plants. To protect the environment, do not allow pesticide to enter or run off into storm drains, drainage ditches, gutters or surface waters. Applying this product in calm weather when rain is not predicted for the next 24 hours will help to ensure that wind or rain does not blow or wash pesticide off the treatment area. Sweeping any product that lands on a driveway, sidewalk, or street, back onto the treated area of the lawn will help to prevent run off to water bodies or drainage systems. This chemical has properties and characteristics associated with chemicals detected in groundwater. The use of this chemical in areas where soils are permeable, particularly where the water table is shallow, may result in groundwater contamination. Application around a cistern or well may result in contamination of drinking water or groundwater.

MANUFACTURED BY:

Lebanon Seaboard Corporation
1600 East Cumberland Street, Lebanon, PA 17042
Made in the U.S.A. of U.S. and imported parts
www.greenviewfertilizer.com

EPA Reg. No. 961-415

(L) (D)

EPA Est. No. 961-PA-01, 961-IL-01

Superscript used is first letter of lot number.

GUARANTEED ANALYSIS

27-0-4

Total Nitrogen (N)	27%
3.4% Ammoniacal Nitrogen	
2.0% Water Insoluble Nitrogen*	
18.1% Urea Nitrogen	
3.5% Other Water Soluble Nitrogen*	
Soluble Potash (K ₂ O)	4%
Sulfur (S)	3.8%
3.8% Combined Sulfur (S)	
Derived From: Ammonium Sulfate, Methylene Ureas, Urea, Muriate of Potash.	
Chlorine (Cl) not more than	4%
* 5.5% Slowly Available Nitrogen from Methylene Ureas.	

F699

Information regarding the contents and levels of metals in this product is available on the internet at:
<http://www.regulatory-info-lebsea.com>

GreenView® is a registered trademark of Lebanon Seaboard Corporation.

Preen® is a registered trademark of Lebanon Seaboard Corporation.

Ready2Go SPREADER and design is a trademark of Lebanon Seaboard Corporation.



PRESS TO RESEAL

LIFT HERE TO OPEN

21-29773

SEE INSIDE BOOKLET FOR COMPLETE DIRECTIONS FOR USE

**STOP! READ THE ENTIRE LABEL FIRST. OBSERVE ALL PRECAUTIONS
AND FOLLOW DIRECTIONS CAREFULLY.**

**PRECAUTIONARY STATEMENTS
HAZARDS TO HUMANS AND DOMESTIC ANIMALS**

CAUTION

Causes moderate eye irritation. Avoid contact with eyes or clothing. Wash thoroughly with soap and water after handling and before eating, drinking, chewing gum, using tobacco or using the toilet.

DIRECTIONS FOR USE

It is a violation of Federal law to use this product in a manner inconsistent with its labeling.

- Do not apply this product in a way that will contact any person or pet either directly or through drift.
- This product is for residential use.
- Do not allow people (other than applicator) or pets on treatment area during treatment.
- Do not enter treatment area until dust has settled.

REFILL INSTRUCTIONS

- This container with Ready2Go Spreader™ is reusable with this product.
- Refill the container with desired amount of this product and use as directed.
- When done, store or dispose of this container as listed on the label.

STORAGE AND DISPOSAL

Do not contaminate water, food or feed by storage and disposal.

Pesticide Storage: Store product in its original container in a cool dry, locked place out of the reach of children and animals.

Pesticide Disposal and Container Handling: Nonrefillable container. Do not reuse or refill this container except as described in the DIRECTIONS FOR USE (see Refill Instructions).

If Empty: Place in trash or offer for recycling if available.

If partly filled: Call your local solid waste agency for disposal instructions. Never place unused product down any indoor or outdoor drain.

GUARANTEED ANALYSIS

27-0-4

Total Nitrogen (N)	27%
3.4% Ammoniacal Nitrogen	
2.0% Water Insoluble Nitrogen*	
18.1% Urea Nitrogen	
3.5% Other Water Soluble Nitrogen*	
Soluble Potash (K ₂ O)	4%
Sulfur (S)	3.8%
3.8% Combined Sulfur (S)	
Derived From: Ammonium Sulfate, Methylene Ureas, Urea, Muriate of Potash.	
Chlorine (Cl) not more than	4%
* 5.5% Slowly Available Nitrogen from Methylene Ureas.	

F699

Information regarding the contents and levels of metals in this product is available on the internet at: <http://www.regulatory-info-lebsea.com>

MANUFACTURED BY:

Lebanon Seaboard Corporation
1600 East Cumberland Street
Lebanon, PA 17042

Made in the U.S.A. of U.S. and imported parts
www.greenviewfertilizer.com

21-29773

EPA Reg. No. 961-415

(L) (D)
EPA Est. No. 961-PA-01, 961-IL-01

Superscript used is first letter of lot number.



GREENVIEW WEED & FEED WITH PREEN

KEEP OUT OF REACH OF CHILDREN CAUTION

See Container label for First Aid and additional Precautionary Statements

ACTIVE INGREDIENTS:	
2,4-D, 2-ethylhexyl ester	1.108%
Mecoprop-p acid	0.167%
Dicamba acid	0.071%
OTHER INGREDIENTS:	98.654%
TOTAL	100.000%

USE PRECAUTIONS

- Do not use on dichondra, carpetgrass, "Floratum" St. Augustinegrass, creeping bentgrass, or turfgrass where desirable clovers are present.
- Do not apply this product to newly seeded grasses until well-established or after the second or third mowing.
- Do not use this product on flowers, vegetables, groundcovers, gardens or landscape plantings including shrubs and trees. Do not exceed specified dosage for any area and do not apply this product within the dripline of or over surface roots of trees, shrubs, and other ornamentals.
- Reseeding or overseeding areas may occur three (3) weeks after the application of this product.
- Do not use this product on or near desirable plants and avoid spreading granules onto exposed root systems or adventitious shoots (rhizomes) within the drip line of the roots of desirable trees and shrubs, since injury may result.
- Do not apply directly to or near water, storm drains, gutters, sewers, or drainage ditches. Do not apply within 25 feet of rivers, fish ponds, lakes, streams, reservoirs, marshes, estuaries, bays, and oceans. Do not apply when windy. Apply this product directly to your lawn, and sweep any product landing on the driveway, sidewalk, gutter, or street back onto the treated area. To prevent product run-off, do not over water the treated area(s) to the point of runoff or apply when raining or when rain is expected that day.

HOW MUCH TO APPLY

For use on: Kentucky bluegrass, fescue spp., perennial ryegrass, common bermudagrass, bahiagrass, and zoysiagrass, St. Augustinegrass, centipedegrass, hybrid bermudagrass, and colonial bentgrass: Apply 2.8 pounds of product per 1,000 square feet of turfgrass. A second application may be made after 30 days. The maximum number of broadcast applications per treatment site is 2 per year.

MAXIMUM USE RATE STATEMENT

Do not apply more than 2.8 pounds of product per 1000 square feet of turfgrass per application. If necessary, a second application may be made no sooner than 30 days after the first. Do not apply more than 5.6 pounds of product per 1000 square feet per year.

WHEN TO APPLY

- Apply when listed broadleaf weeds are actively growing in spring or early fall.
- Apply when the air is calm to ensure uniform coverage and avoid spreading granules onto flowers, vegetables, and ornamental shrubbery.

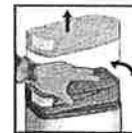
APPLICATION INSTRUCTIONS

- Mow lawn to normal height, 1 to 2 days before application.
- For best results lawn must be MOIST and the air calm, when product is applied. When the lawn is moist, the product granules stick better to the leafy parts of the weeds, ensuring that the weed-killing ingredients are absorbed by the weed plant.
TIP: Apply after a heavy dew or rain, or on a thoroughly watered lawn.
TIP: DO NOT apply to a moist lawn IF rain is expected within 24 hours of application.
TIP: DO NOT water in immediately after application as the granules need to stick to the weed plant leaf for 1-2 days to be most effective.
- Apply when weeds are young and actively growing.
- Avoid applying when temperatures are consistently above 90°F.
- After a 1-2 day period after application, if it has not rained – the lawn should be thoroughly watered. Use protective eyewear when using battery powered spreader.

READY2GO SPREADER™ DIRECTIONS: FIRST TIME USE



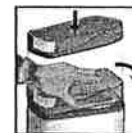
PLACE the Ready2Go Spreader™ UPSIDE DOWN on a flat surface (the GREEN BASE facing up).



HOLD the container steadily and TURN the base COUNTER-CLOCKWISE to left, approximately quarter turn, until it STOPS and LIFT to remove.



REMOVE the protective seal from the round opening, and PULL the tab from the battery compartment.

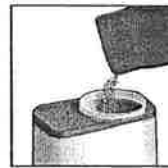


REALIGN the protruding tabs on the base with the slots on the container and TURN CLOCKWISE to right until the base LOCKS back in its original position.



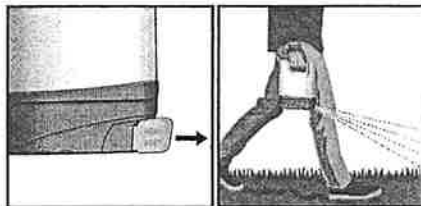
FLIP the Ready2Go Spreader™ back to the UPRIGHT position. The Ready2Go Spreader™ is now ready to use.

TO REFILL YOUR READY2GO SPREADER™ CONTAINER

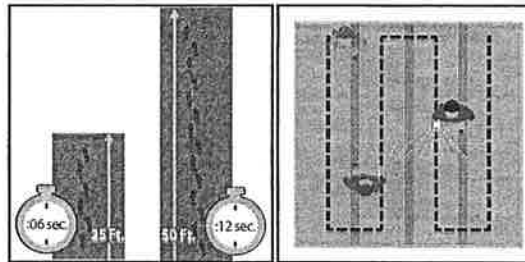


- PLACE the Ready2Go Spreader™ UPSIDE DOWN on a flat surface the GREEN BASE facing up.
- HOLD the container steady while TURNING the base COUNTER-CLOCKWISE until it STOPS and LIFT to remove.
- CUT a corner opening on the GreenView Weed & Feed with Preen refill bag, and pour into the Ready2Go Spreader™ until the container is FULL.
- Replace the spreader unit base. Align tabs and slots and twist clockwise into place.
- FLIP the Ready2Go Spreader™ to the UPRIGHT position. The Ready2Go Spreader™ is now ready to operate. Follow application instructions.

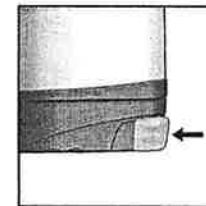
DIRECTIONS FOR APPLYING THE PRODUCT TO YOUR LAWN



Move to the lawn area to be treated. POSITION the Ready2Go Spreader™ comfortably at your side (arm fully extended), over the target area, and TURN ON by pulling back the on/off slide switch.



When product begins spreading, WALK over the application area at a NORMAL WALKING PACE. (6 seconds for a 25' strip, or 12 seconds for a 50' strip). CONTINUE to within 2' of the end of the application area, and begin a new row by taking 2 STEPS TO THE RIGHT OR LEFT, and walk back parallel to your first row. There should be a SLIGHT OVERLAP to the spread radius. CONTINUE in this manner until you have finished applying the product.



TURN OFF the Ready2Go Spreader™ by PUSHING IN the slide switch. If product remains, store in a cool, dry place. If empty and lawn application is finished, simply refill the container.

INSTRUCTIONS

GreenView Weed & Feed with Preen contains Trimec® Herbicide. Trimec® controls a wide range of lawn weeds, including dandelion, chickweed, plantain, henbit, spurge and many other listed weeds commonly found in home lawns. In addition, a 27-0-4 fertilizer provides a supply of lawn food. Possible retreatment may be necessary if (a) the lawn is heavily overrun by weeds or, (b) if adverse low moisture conditions prevail and weeds are in a state of poor growth. A second application may be made after 30 days. Treated areas may be seeded 3 weeks after application.

GREENVIEW WEED & FEED WITH PREEN KILLS MORE THAN 250 WEEDS!

Amaranth: purple, slender; Aster: heath, white heath, purple, white prairie; Artichoke: Austrian fieldcress; Bedstraw: Catchweed, smooth, Northern, pinewoods; Beggarticks, hairy; Belony, Florida; Bindweed: Field, Hedge; Bitter Wintercress; Bittercress, hairy; Bitterweed; Black-eyed Susan; Black Medic; Blood flower milkweed; Blue lettuce; Brassbuttons; Bristly oxtongue; Broomweed; Buckhorn; Bullnettle; Burdock; Burweed, lawn (spurge); Buttercup: bulbous, creeping; Buttonweed: common (poorjoe), Virginia; Carolina geranium (wild); Carpetweed; Catnip; Catsear, spotted (false dandelion); Chamber bitter; Chickweed: common, mouseear, sticky; Chicory; Cinquefoil; Clover: crimson, alyce, hop, rabbit foot, red, strawberry, yellow sweet, white sweet, white; Cockle; Cocklebur: oriental, spiny; Common mullein; Corn Spurry; Creeping Beggarweed; Creeping Jenny (creeping charlie); Cupid shaving Brush; Cudweed; Daisy: English, oxeye; Dandelion: common, false; Day flower; Deadnettle; Dichondra; Dock: broadleaf, curly; Dogbane; Dogfennel; Dollarweed (Pennywort); Dove weed; Elderberry; Falseflax; False sunflower; Fiddleneck; Filaree: redstem, whitestem; Fleabane: daisy (annual), rough; Galinsoga: hairy, smallflower, Goldenrod; Ground ivy; Groundsel; Gumweed; Hairy fleabane; Hawkweed: meadow, mouseear, orange, yellow; Healall; Heartleaf drymary; Hemp; Henbit; Hoary cress; Horsenettle; Horseweed; Jimsonweed; Johnny-Jumpup violet; Knapwe; Knotweed, prostrate; Kochia; Lambsquarters; Lespedeza; Mallow: alkali, bristly, common, dwarf, venice; Marcela; Matchweed; Mexicanweed; Moneywort; Morningglory: bigroot, ivyleaf, mexican, red, tall, woolly; Mugwort; Mustard: ball, black, blue, hedge, Indian, tansy, tumble, white, wormseed; Nettle: stinging (burning), tall, wood; Parsley-piert; Parsnip; Pearlwort; Pennycress (frenchweed); Pepperweed: perennial, Virginia (Peppergrass); Pigweed: prostate, redroot, russian, smooth,

tumble; Pineapple weed; Plains coreopsis (tickseed); Plantain: blackseed, bracted, broadleaf, buckhorn, hoary, narrowleaf, slender, woolly; Poison ivy; Poison oak; Pokeweed; Prairie Sunflower; Prickly lettuce (compass plant); Prickly sida; Prostrate knotweed; Puncturevine; Purslane, common; Pusley: brazil, florida, large flower; Ragweed: bur, common, lancleaf, western; Redstem filaree; Rough cinquefoil; Scarlet pimpernel; Shepardspurse; Smartweed: ladythumb, pale, Pennsylvania; Smooth chaff-flower; Smoothdock; Sorrel, red (sheep); Sowthistle: annual, spiny; Spanish needles; Speedwell: bi-lobed, common, corn, ivyleaf, persian, purslane, slender, snow, thymeleaf; Spiny amaranth; Spurge: spotted, prostrate; Spurweed; Star of Bethlehem; Strawberry, India mock; Tansy ragwort; Tanweed; Thistle: blessed, bull, canada, nodman (prairie), musk, platte, plumeless, russian, scotch, wavyleaf, yellow (horrible); Trailing crownvetch; Velvetleaf; Vervain: blue, hoary, prostrate, tall; Vetch: bird, hairy, milk, narrowleaf, wild; Virginia creeper; Western clematis; Western salsify; Wild aster; Wild buckwheat; Wild carrot; Wild four-o'clock; Wild garlic; Wild lettuce; Wild marigold; Wild mustard (yellow rocket); Wild onion; Wild parsnip; Wild radish; Wild rape; Wild strawberry; Wild sweet potato; Wild violet; Woodsorrel: creeping, violet, yellow (Oxalis); Woolly croton; Wormseed; Yarrow: common, western, yellow

TO REPLACE BATTERIES

- Access the battery compartment on the inside of the spreader base.
- Battery compartment door opens by pinching tab and lifting to open.

Requires 4 AA batteries (included).

Batteries included, but disabled for shipment. Pull tab from battery compartment to activate.

WARRANTY

NOTE To the extent consistent with applicable law, Buyer assumes all responsibility for safety and performance if this product is not used according to the directions.

GUARANTEE

Lebanon Seaboard guarantees you will be satisfied with the performance of this product when used as directed, or your money back. If not satisfied, describe the nature of your problem and simply send proof of purchase to Lebanon Seaboard Corporation, 1600 East Cumberland Street, Lebanon, PA 17042