

ANT KILLER

● **Kills ants, including acrobat, allegheny, argentine, big-headed, cornfield, crazy, ghost, odorous house, pavement, pharaoh, pyramid, thief and white-footed ants (excludes fire, carpenter and harvester ants)**

● **Starts killing worker ants in 24 hours**

● **For Indoor and Outdoor Use ● Uses 4 food sources to kill listed ants**

● **Content: 6 CHILD RESISTANT BAIT STATIONS**

CAUTION
See First Aid and Precautionary Statements on back panel

DO NOT ALLOW CHILDREN OR PETS TO PLAY WITH BAITS

ACTIVE INGREDIENT: 0.05%
OTHER INGREDIENTS: 99.95%
NET WT: 100.00%
TOTAL NET WEIGHT: 600 grams / 18 grams



HOMEPLUS **Ant KILLER** **AB** **6 CHILD RESISTANT BAIT STATIONS**

KILLS THE QUEEN KILLS THE COLONY

PRECAUTIONARY STATEMENTS
Hazards to Humans and Domestic Animals: **CAUTION:** Causes moderate eye irritation. Avoid contact with skin, eyes or clothing. Wash hands thoroughly with soap and water after use and before eating, drinking, chewing gum, using tobacco or using the toilet.

ENVIRONMENTAL HAZARDS
To protect the environment, do not allow bait to enter or run off into storm drains, drainage ditches, gutters or surface waters.

First Aid
If in Eyes: -Hold eye open and rinse slowly and gently with water for 15-20 minutes.
-Remove contact lenses, if present, after the first five minutes, then continue rinsing.
-Call a poison control center or doctor for treatment advice.
Have the product or label with you when calling a Poison Control Center or doctor or going for treatment. In case of emergency, for additional information call 800 255 3924.

DIRECTIONS FOR USE:
It is a violation of federal law to use this product in a manner inconsistent with its labeling. For use in and around homes, apartments, commercial, industrial, municipal, institutional, research, recreational, health care, educational, day care, hospitality and agricultural buildings and other man-made structures, garages, transport vehicles, sewers, animal research facilities, and food service, storage, handling and processing establishments.

1. Remove bait from package.
2. Punch in semi-perforated holes.
3. Place stations where ants are seen or ant activity is suspected to occur.
4. Do not place on food preparation surfaces when food is being handled or on utensils that are used for food preparation.

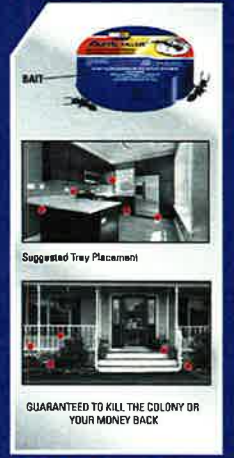
Remove other sources of food, like crumbs, sugar and grease spots. Common areas to place baits include: along baseboards, in corners of rooms and cabinets, on counter tops, under and behind appliances, under sinks, around pipes and water sources, in pantry, on window sills and around doorways, near garbage cans, and along ant trails. For lawn and garden, place along trails and near nests. Space stations 10-20 feet apart.

Food Processing and Handling Establishments: Food areas include serving areas while the establishment is in operation, areas for receiving, storing, packing, and preparation, and edible waste storage and enclosed processing systems. Do not contaminate food and feedstuffs. Use as instructed above.

STORAGE AND DISPOSAL
Do not contaminate water, food or feed by storage or disposal.

Pesticide Storage: Store in a dry place, below 130 °F. Do not store where children or animals may gain access.

Container Handling and Disposal: If empty: Non-refillable container. Do not reuse this container. Place in trash or offer for recycling if available. If partly filled: Call your local solid waste agency for disposal instructions.



Manufactured For:
PIC CORPORATION
1101-1107 West Elizabeth Ave.
Linden, NJ 07036, USA
EPA Reg. No. 73079-13-3095
EPA Est. No. 3095-NJ-1 (P) 2005-NJ-2-B
Circled letter is first letter of lot number.
STOCK# AT-GABMETAL MADE IN U.S.A.





To open station, punch in semi-perforated holes. To open station, punch in semi-perforated holes. To open station, punch in semi-perforated holes.