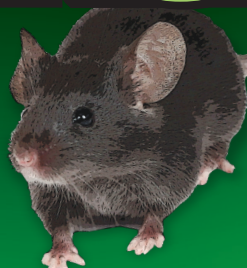


Refillable

1 Refillable Bait Station Container
with 8 one ounce Mini Bars

Ramik[®] mouser RF



This Bait Station is Resistant to Tampering by Children
Use Indoors Only

KILLS HOUSE MICE

Active Ingredient:

Diphacinone (2-Diphenylacetyl-1,3-Indandione)0.005%

Other Ingredients:.....99.995%

Total.....100.000%

EPA Reg. No. 61282-57

EPA Est. No. 61282-WI-01

**KEEP OUT OF REACH
OF CHILDREN
CAUTION**

- Child-Resistant Station
- Includes Mini Bars



Net Contents: 1 Refillable Bait Station Container with 8 one oz. Mini Bars
Net Weight: 8 oz. (226.8 g)

Ramik[®] mouser RF

KILLS HOUSE MICE



Refillable

1 Refillable Bait Station Container
with 8 one oz. Mini Bars

Ramik[®] mouser RF

FIRST AID

If Swallowed:	<ul style="list-style-type: none"> • Call a poison control center or doctor immediately for treatment advice. • Have person sip a glass of water if able to swallow. • Do not induce vomiting unless told to do so by the poison control center or doctor.
If on Skin or Clothing:	<ul style="list-style-type: none"> • Take off contaminated clothing. • Rinse skin immediately with plenty of water for 15-20 minutes. • Call a poison control center or doctor immediately for treatment advice.
If in Eyes:	<ul style="list-style-type: none"> • Hold eye open and rinse slowly and gently with water for 15-20 minutes. • Remove contact lenses, if present, after the first 5 minutes, then continue rinsing eye. • Call a poison control center or doctor immediately for treatment advice.
<p>NOTE TO PHYSICIAN If swallowed, this material may reduce the clotting ability of the blood and cause bleeding. If ingested, administer Vitamin K₁ intramuscularly or orally. Repeat as necessary based on monitoring of prothrombin times.</p>	
<p>TREATMENT FOR PET POISONING If animal eats bait, call veterinarian or 1-800-498-5743 at once.</p>	
<p>NOTE TO VETERINARIAN Anticoagulant Diphacinone: For animals ingesting bait and/or showing poisoning signs (bleeding or elevated prothrombin times), give Vitamin K₁.</p>	
<p>Have the product container or label with you when calling a poison control center or doctor, or going for treatment.</p>	
<p>For 24-hour emergency information on this product, call 1-800-498-5743 (US & Canada) or 1-651-523-0318 (all other areas).</p>	

PRECAUTIONARY STATEMENTS

HAZARDS TO HUMANS AND DOMESTIC ANIMALS

CAUTION: Harmful if swallowed or absorbed through the skin. Causes moderate eye irritation. Avoid contact with eyes, skin, or clothing. Keep away from children, domestic animals and pets.

ENVIRONMENTAL HAZARDS

This product is extremely toxic to mammals, birds and other wildlife. Dogs, cats and scavenging mammals and birds might be poisoned if they feed upon animals that have eaten this bait. Do not apply this product outdoors.

DIRECTIONS FOR USE

It is a violation of Federal law to use this product in a manner inconsistent with its labeling.

READ THIS LABEL: Read this entire label and follow all use directions and use precautions. Use only for the sites, pests, and application methods described on this label.

IMPORTANT: Do not expose children, pets or other non-target animals to rodenticides. To help to prevent accidents:

1. Store product not in use in a location out of reach of children and pets.
2. Dispose of product container, and unused, spoiled, and unconsumed bait as specified on this label.

USE RESTRICTIONS:

This bait station may be used in indoor areas accessible to children, consistent with all use restrictions and other requirements indicated on this label.

DO NOT USE THIS PRODUCT OUTDOORS OR IN AREAS ACCESSIBLE TO PETS.

This product may only be used to control house mice inside homes, and in industrial, commercial, or agricultural buildings. Do not place bait station in areas where there is a possibility of contaminating food or surfaces that come in direct contact with food, feed, or water.

SELECTION OF TREATMENT AREAS: Determine areas where house mice will most likely find and consume the bait. Generally, these areas are along walls, by gnawed openings, in corners and concealed places, between floors and walls, or in locations where house mice or their signs have been seen. Remove as much alternative food as possible.

KILLS HOUSE MICE

APPLICATION DIRECTIONS:

HOUSE MICE: While wearing barrier laminate gloves, place one Mini Bar in the bait station. See images for loading instructions. Place the bait station at highest point of activity along a wall or in corner where house mice or their signs have been seen. If additional units are to be used, place bait stations at 8 to 12-foot intervals. While wearing barrier laminate gloves, replace bait in bait station when bait is consumed or contaminated. Maintain an uninterrupted supply of fresh bait for at least 15 days or until there are no longer signs of new feeding by house mice.

FOLLOW-UP: Replace contaminated or spoiled bait immediately. Using barrier laminate gloves collect and dispose of all dead, exposed animals and leftover bait properly. To discourage reinfestation, limit sources of rodent food, water and harborage as much as possible. If reinfestation does occur, repeat treatment.

STORAGE AND DISPOSAL

STORAGE: Store only in original container in a dry place inaccessible to children and pets.

DISPOSAL: *Nonrefillable container.* Do not reuse or refill this container.

If empty: Place in trash or offer for recycling if available.

If partly filled: Call your local solid waste agency for disposal instructions. Never place unused product down any indoor or outdoor drain, place in trash or offer for recycling if available.

DISCLAIMER

DISCLAIMER: To the extent permitted by applicable law, seller makes no representation or warranty, either express or implied, for results due to misuse, improper handling or improper storage of this material. Nor does Seller assume any responsibility for injury to persons, crops, animals, soil or property arising out of misuse, improper handling or improper storage of this material.

For non-emergency (e.g., current product information),
Call: 1-800-621-8829

Manufactured by:

HACCO, Inc.
110 Hopkins Drive
Randolph, WI 53956 U.S.A.

HACCO, Inc. is a Wholly Owned
Subsidiary of Neogen[®] Corporation.

Ramik[®] is a registered trademark
of Neogen[®] Corporation.

BA220465-1119



Item No. 000800



Refillable

1



OPENING THE STATION: 1. Apply gloves. Place station on a hard surface. Position the pushkey in the slot at the front of the closed bait station as shown. With firm downward pressure, push the pushkey straight down into the slot until you hear a click. **DO NOT TURN THE PUSHKEY.**

2



2. Holding the base of station with one hand, lift its top holding on to the pushkey with your other hand.

3



LOADING THE BAIT: Place Mini Bar into the station's bait compartment marked "Place Bait Here" as shown. Do not place bait in any other location within the station.

4



CLOSING THE STATION: With downward pressure, push top down until you hear a click.

Refillable

Ramik[®] mouser RF

KILLS HOUSE MICE

FIRST AID	
If Swallowed:	<ul style="list-style-type: none"> • Call a poison control center or doctor immediately for treatment advice. • Have person sip a glass of water if able to swallow. • Do not induce vomiting unless told to do so by the poison control center or doctor.
If on Skin or Clothing:	<ul style="list-style-type: none"> • Take off contaminated clothing. • Rinse skin immediately with plenty of water for 15-20 minutes. • Call a poison control center or doctor immediately for treatment advice.
If in Eyes:	<ul style="list-style-type: none"> • Hold eye open and rinse slowly and gently with water for 15-20 minutes. • Remove contact lenses, if present, after the first 5 minutes, then continue rinsing eye. • Call a poison control center or doctor immediately for treatment advice.
<p>NOTE TO PHYSICIAN If swallowed, this material may reduce the clotting ability of the blood and cause bleeding. If ingested, administer Vitamin K₁ intramuscularly or orally. Repeat as necessary based on monitoring of prothrombin times.</p>	
<p>TREATMENT FOR PET POISONING If animal eats bait, call veterinarian or 1-800-498-5743 at once.</p>	
<p>NOTE TO VETERINARIAN Anticoagulant Diphacinone: For animals ingesting bait and/or showing poisoning signs (bleeding or elevated prothrombin times), give Vitamin K₁.</p>	
<p>Have the product container or label with you when calling a poison control center or doctor, or going for treatment.</p>	
<p>For 24-hour emergency information on this product, call 1-800-498-5743 (US & Canada) or 1-651-523-0318 (all other areas).</p>	

APPLICATION DIRECTIONS:

HOUSE MICE: While wearing barrier laminate gloves, place one Mini Bar in the bait station. See images for loading instructions. Place the bait station at highest point of activity along a wall or in corner where house mice or their signs have been seen. If additional units are to be used, place bait stations at 8 to 12-foot intervals. While wearing barrier laminate gloves, replace bait in bait station when bait is consumed or contaminated. Maintain an uninterrupted supply of fresh bait for at least 15 days or until there are no longer signs of new feeding by house mice.

FOLLOW-UP: Replace contaminated or spoiled bait immediately. Using barrier laminate gloves collect and dispose of all dead, exposed animals and leftover bait properly. To discourage reinfestation, limit sources of rodent food, water and harborage as much as possible. If reinfestation does occur, repeat treatment.

STORAGE AND DISPOSAL

STORAGE: Store only in original container in a dry place inaccessible to children and pets.

DISPOSAL: *Nonrefillable container.* Do not reuse or refill this container.

If empty: Place in trash or offer for recycling if available.

If partly filled: Call your local solid waste agency for disposal instructions. Never place unused product down any indoor or outdoor drain, place in trash or offer for recycling if available.

DISCLAIMER

DISCLAIMER: To the extent permitted by applicable law, seller makes no representation or warranty, either express or implied, for results due to misuse, improper handling or improper storage of this material. Nor does Seller assume any responsibility for injury to persons, crops, animals, soil or property arising out of misuse, improper handling or improper storage of this material.

For non-emergency (e.g., current product information), Call: 1-800-621-8829

Manufactured by:

HACCO, Inc.
110 Hopkins Drive
Randolph, WI 53956 U.S.A.

HACCO, Inc. is a Wholly Owned
Subsidiary of Neogen[®] Corporation.

Ramik[®] is a registered trademark
of Neogen[®] Corporation.



BA220465-1119

Item No. 000800



1



OPENING THE STATION: 1. Apply gloves. Place station on a hard surface. Position the pushkey in the slot at the front of the closed bait station as shown. With firm downward pressure, push the pushkey straight down into the slot until you hear a click. **DO NOT TURN THE PUSHKEY.**

2



2. Holding the base of station with one hand, lift its top holding on to the pushkey with your other hand.

3



LOADING THE BAIT: Place Mini Bar into the station's bait compartment marked "Place Bait Here" as shown. Do not place bait in any other location within the station.

4



CLOSING THE STATION: With downward pressure, push top down until you hear a click.

PRECAUTIONARY STATEMENTS

HAZARDS TO HUMANS AND DOMESTIC ANIMALS

CAUTION: Harmful if swallowed or absorbed through the skin. Causes moderate eye irritation. Avoid contact with eyes, skin, or clothing. Keep away from children, domestic animals and pets.

ENVIRONMENTAL HAZARDS

This product is extremely toxic to mammals, birds and other wildlife. Dogs, cats and scavenging mammals and birds might be poisoned if they feed upon animals that have eaten this bait. Do not apply this product outdoors.

DIRECTIONS FOR USE

It is a violation of Federal law to use this product in a manner inconsistent with its labeling.

READ THIS LABEL: Read this entire label and follow all use directions and use precautions. Use only for the sites, pests, and application methods described on this label.

IMPORTANT: Do not expose children, pets or other non-target animals to rodenticides. To help to prevent accidents:

1. Store product not in use in a location out of reach of children and pets.
2. Dispose of product container, and unused, spoiled, and unconsumed bait as specified on this label.

USE RESTRICTIONS:

This bait station may be used in indoor areas accessible to children, consistent with all use restrictions and other requirements indicated on this label.

DO NOT USE THIS PRODUCT OUTDOORS OR IN AREAS ACCESSIBLE TO PETS.

This product may only be used to control house mice inside homes, and in industrial, commercial, or agricultural buildings. Do not place bait station in areas where there is a possibility of contaminating food or surfaces that come in direct contact with food, feed, or water.

SELECTION OF TREATMENT AREAS: Determine areas where house mice will most likely find and consume the bait. Generally, these areas are along walls, by gnawed openings, in corners and concealed places, between floors and walls, or in locations where house mice or their signs have been seen. Remove as much alternative food as possible.

1 Refillable Bait Station Container
with 8 one oz. Mini Bars

Refillable

Ramik[®] mouser RF

KILLS HOUSE MICE



Net Contents: 1 Refillable Bait Station Container with 8 one oz. Mini Bars
Net Weight: 8 oz. (226.8 g)



- Child-Resistant Station
- Includes Mini Bars

**KEEP OUT OF REACH
OF CHILDREN
CAUTION**

Active Ingredient:	Diphacinone (2-Diphenylacetyl-1,3-Indandione).....	0.005%
Other Ingredients:	99.995%
Total:	100.000%
EPA Reg. No. 61282-57		
EPA Est. No. 61282-WI-01		

Use Indoors Only

This Bait Station is Resistant to Tampering by Children

KILLS HOUSE MICE

Ramik[®] mouser RF

1 Refillable Bait Station Container
with 8 one ounce Mini Bars

Refillable