



# Diatomaceous Earth Crawling Insect Killer

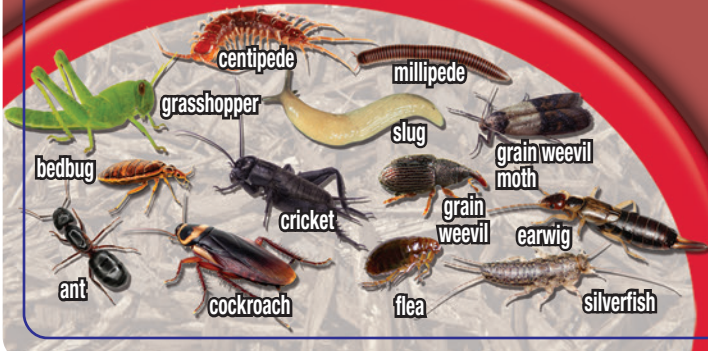
*Kills ants, cockroaches, earwigs, silverfish, beetles, slugs, millipedes, centipedes, cluster flies, fleas, carpet beetles, bedbugs, grasshoppers and other crawling insects*

*May be applied to growing crops, livestock, food and feed establishments*

**ACTIVE INGREDIENT:**  
Diatomaceous Earth, chemical composition consisting of: Silicon Dioxide... 85.00%  
**OTHER INGREDIENTS:**..... 15.00%  
**TOTAL:**..... 100.00%

EPA Est. No. 4-NY-1      EPA Reg. No. 73729-1-4

*Insects that contact or ingest will die within 48 hours*



**Keep Out Of Reach Of Children**  
**CAUTION** (See Back Booklet for Additional Precautionary Statements and First Aid)  
**Net Contents 1.3 LBS. (0.599 kg)**

# Diatomaceous Earth

## Crawling Insect Killer

- ✓ Effective and long lasting when kept dry
- ✓ Insects that contact or ingest will die within 48 hours
- ✓ Kills ants, cockroaches, earwigs, silverfish, beetles, slugs, millipedes, centipedes, cluster flies, fleas, carpet beetles, bedbugs, grasshoppers and other crawling insects
- ✓ May be applied to growing crops, livestock, food and feed establishments

Buyers Guarantee Limited to Label Claims.  
EPA Reg. No. 73729-1-4 EPA Est. No. 4-NY-1  
©Bonide Products, LLC All Rights Reserved

Distributed by:  
Bonide Products, LLC  
6301 Sutliff Road  
Oriskany, NY 13424

BN

1.3 lbs.



## DIRECTIONS FOR USE

It is a violation of Federal law to use this product in a manner inconsistent with its labeling.

## PRODUCT INFORMATION

This product is a ready-to-use insecticide which provides effective control against crawling and flying insects, pests and mites. Surfaces treated with this product will control flying insects if they land on the treated surface. This product is a mechanical insect killer. Insects cannot become immune to its action. Insects come in contact or ingest this powder and die within 48 hours.

## APPLICATION

This product is for use in and around residential, commercial and agricultural buildings, structures and their immediate surroundings, in and around food/feed handling establishments, in and around livestock and poultry houses and may be applied over the top while animals are present, on crops, and stored grain.

This product is intended for application using commercially available hand dusters, power dusters or other suitable means for application to areas where insect pests are found. Alternatively, this product can be applied as a wettable powder (WP). WP treatments are intended both for indoor and outdoor applications and can be applied in a targeted manner.

**Slurry Mixing:** When a WP application is desired or being utilized, use the following procedure:

**Mixing:**

1. Fill spray tank using 2/3 of the desired amount of water and add optional non-ionic surfactant

- according to label rate, and stir.
2. Typical Ratio is 1 lb. of this product per gallon of water in the total spray mixture. Maximum slurry solids is 1.65 lbs. per gallon of water.
  3. After this product is thoroughly blended add the remaining amount of water and stir.

**Notes:**

- Non-ionic surfactants or wetting agents are used to promote adhesion on hydrophobic surfaces.
- It is advised to mix this solution directly prior to spraying and apply the entire batch within 8 hours.
- This product will settle if left undisturbed for more than 1 hour, therefore, it is recommended to shake the container prior to restarting the application.
- When proper coverage is obtained, a visible white residue will be apparent on the treated surface.

## CROP APPLICATIONS

This product may be applied as a wettable powder to all growing crops to control insect pests and mites. Minimum application rate is 3 lbs. per acre with a maximum application rate of 70 lbs. per acre. Slurry solids should be adjusted to match the application equipment. Repeat treatments to maintain adequate control in the event of rain. It is advisable to add non-ionic surfactants or wetting agents to promote adhesion on foliage.

**Agricultural Use Requirements**- Use this product only in accordance with its labeling and with the Worker Protection Standard, 40 CFR part 170. This Standard contains requirements for the protection of agricultural workers on farms, forests, nurseries, and greenhouses, and handlers of agricultural pesticides.

**Agricultural Use Requirements Cont.** -It contains requirements for training, decontamination, notification, and emergency assistance. It also contains specific instructions and exceptions pertaining to the statements on this label about personal protective equipment (PPE) and restricted-entry interval. The requirements in this box only apply to uses of this product that are covered by the Worker Protection Standard.

This product does not have a restricted entry interval (REI) after application.

### **POULTRY AND LIVESTOCK**

For use in and around Poultry and Livestock housing structures, swine houses, cattle barns, calf hutches, loafing barns, horse stables and pet kennels to control insect pests and mites. Apply uniformly to infested areas of walls and floors, cracks, crevices, bedding, wall voids and around window and door frames. Applications are permitted when animals are present and may be used over the top of animals. Applications are permitted mid-flock while birds are present, over the top of the birds. Do not apply directly to animal feed or watering equipment. Litter should be treated when replaced and before each new batch of poultry is introduced to the facility. Repeat treatments as necessary to maintain adequate control if this product has been covered with animal waste.

#### **Litter Treatment:**

Use a handheld, power duster or powder spreader to evenly distribute 4 lbs. per 1000 square feet over the litter, to the areas underneath feed and watering equipment lines. Applications can be made up to 7.5 lbs. per 100 square feet for severe infestations.

If litter is greater than 3 inches deep, apply up to an additional 2.5 lbs. per 100 square feet per additional inch of litter.

**Wall Treatment:**

Apply as a dry powder OR wettable powder to cracks and crevices. The amount of product to be applied will vary with the site but should be in the range of 2-5 oz./100 square feet.

### STORED GRAIN

An effective addition for insect pest control, by physical action for suppressing insect damage to stored grain, including barley, buckwheat, corn, oats, rice, rye, sorghum grain, wheat, and mixtures of these grains.

Adjust moisture content of grain to not over 12% by weight, and add 1-2 lbs. of this product per ton of grain at the point of entry into storage. Up to 7 pounds of this product per ton of grain can be added in the event of severe infestation. Treated grain may be reduced to a lower grade, have reduced flowability and test weight. For best results, treat grain immediately after harvest.

### RESIDENTIAL USES (INDOOR AND OUTDOOR APPLICATIONS)

In living areas, make applications in such a manner as to avoid deposits on exposed surfaces or introducing the material into the air. Application as WP will facilitate a targeted application. Treat a small area of the surface to be treated and look for staining or other adverse reactions before making regular application.

To apply this product directly into cracks and crevices, use a bulbous duster or other suitable equipment. Apply lightly and uniformly to infested areas. The amount of product to be applied will vary with the site but should usually be in the range of 2-5 oz./100 square feet.

**Indoor use:** Lightly coat a thin layer of this product in areas where target pests are found and may hide such as cracks and crevices, behind and beneath refrigerators, cabinets, stoves, garbage cans and in and around sewer pipes and drains, window frames and in attics and basements. Dust insects directly if possible. Repeat treatment if the product is inadvertently removed. The amount of product applied will vary with the site but should usually be in the range of 2-5 oz./100 square feet.

**Fleas:** Thoroughly treat floor and bedding in and around pets' sleeping quarters. Treat surrounding cracks and crevices, baseboards, carpeting and wherever fleas are suspected.

**Carpet Beetles:** Dust along baseboards, carpet edges, under carpeting, furniture, in closets and shelving where these insects are seen or suspected.

**Bedbugs:** Dismantle bed. Use this product in joints, crevices and where rungs are inserted. See that all interior areas are dusted. Dust mattresses especially folds and edges. All cracks and crevices and around window openings in the bedroom should be treated.

**Outdoor Use:** Lightly coat a thin layer of this product in areas where these insect pests are found such as patios, outdoor sills, window and door frames. Apply around foundations, along ant trails and around sewer pipes and drains. Repeat treatment if the product is inadvertently removed. The amount of product to be applied will vary with the site but should usually be in the range of 2-5 oz./100 square feet.

#### **KILLS THE FOLLOWING:**

**Beetles:** 12-spotted Cucumber Beetles, Asparagus Beetles, Bean Beetles, Blister Beetles, Boll Weevils,

Cigarette Beetle, Colorado Potato Beetles, Confused Flour Beetles, Cucumber Beetles, Dark Mealworms, Darkling Beetles (lesser meal worm), Dried Fruit Beetles, Drugstore Beetles, Elm Leaf Beetles, Flea Beetles, Japanese Beetles, Mealworms, Mexican Bean Beetles, Pink Bollworms, Red Flour Beetles, Saw Toothed Grain Beetles, Spider Beetles, Western Yellow-striped Armyworms, Yellow Mealworms. **Moths:** Angoumois Grain Moths, Artichoke Plume Moths, Bagworms, Codling Moths, Diamondback Larvae and Moths, European Pine Tip Moths, Grape Leaf Skeletonizers, Gypsy Moths (adults & larvae), Indian Meal Moths, Mediterranean Flour Moths, Small Flying Moths, Tobacco Moths, Tussock Moths, **Weevils:** Carrot Weevils, Clover Weevils, Pepper Weevils, Rice Weevils, Weevils, **Flies, Gnats and Maggots:** Apple Maggots, Blow Flies, Cabbage Maggots, Cherry Fruit Flies, Crane Flies, Fruit Flies, Fungus Gnats, Gnats, House Flies, Maggots, Mushroom Flies, Olive Fruit Flies, Onion Maggots, Shore flies, Vinegar Flies, Whiteflies. **"Worms" Slugs and Caterpillars:** Armyworms, Beet Armyworms, Cross-striped Cabbageworms, Cankerworms, Caterpillars, Corn Earworms, Eastern Tent Caterpillars, Fire worms, Forest Tent Caterpillars, Fruit worms, Hornworms, Green Fruit Worms, Imported Cabbageworms, Navel Orange worms, Potato Tuber worms, Saltmarsh caterpillars, Slugs Tomato Budworms, Tomato Fruit worms, Tomato Hornworms, Tomato pinworms, Webworms, **"Bugs" Scale and Mites:** Billbugs, Box Elder Bugs, Clover Mites, Eriophyid Mites, Fleas, Grain Mites, Grape Mealy bugs, Green bugs, Harlequin Bugs, Lace Bugs, Leaf-footed plant bugs, Mealy Bugs, Proba bugs, Tarnished Plant Bugs, Tomato bugs, Tomato Russet Mite, Scales, Soft Scales, Squash bugs, Stink Bugs, Southern chinch bugs, Sow bugs, Vine mealy bugs, **Aphids, Borers, Leafhoppers, Leaf miners, loopers and other insects as listed:** Ants (excluding Fire, Harvester, Carpenter and Pharaoh ants), Aphids, Armored Scales, Bermudagrass Mirids, Branch and Twig Borers, Cabbage Loopers, Cadelles, Chalcids, Cheese Skippers, Cockroaches, Crickets, Earwigs, European Corn Borer,



Fruit tree Leaf rollers, Garden Symphylan, Glassy Winged Sharpshooters, Grape Leafhoppers, Grasshoppers, Green Peach Aphids, Greenhouse Thrips, Heliothis spp., Katydid, Leafhoppers, Leafminers, Leafrollers, Leaf tiers, Loopers, Lygus, Millipedes, Mole crickets, Orange Tortrix, Pacific flatheaded borers, Pear Psyllids, Potato Leafhoppers, Psyllids, Sharpshooters, Shot hole borers, Sliverfish, Skippers, Springtails, Thrips.

## **STORAGE AND DISPOSAL**

Do not contaminate water, food or feed by storage or disposal.

**STORAGE:** Store in a cool, dry area. **PESTICIDE DISPOSAL:** Wastes resulting from the use of this product may be disposed of on site or at an approved waste disposal facility. **CONTAINER DISPOSAL:** If empty: Do not reuse this container. Place in trash or offer for recycling if available. If partly filled: Call your local solid waste agency or 1-800-858-7378 for disposal instructions. Never place unused product down any indoor or outdoor drain.

### **FIRST AID**

**If in eyes:** Hold eye open and rinse slowly and gently with water for 15-20 minutes. Remove contact lenses, if present, after the first 5 minutes, then continue rinsing eye. Call a poison control center or doctor for treatment advice.

**Have the product container or label with you when calling a poison control center or doctor, or going for treatment. Call 1-800-222-1222.**

### **PRECAUTIONARY STATEMENTS**

#### **HAZARDS TO HUMANS AND DOMESTIC ANIMALS**

**CAUTION:** Causes moderate eye irritation. Avoid contact with eyes. Use adequate ventilation and avoid breathing dust. Wear a suitable dust mask approved by NIOSH/MSHA when using this product during prolonged exposure.

Manufacturer makes no warranty, expressed or implied, regarding the performance of this product in the absence of control over how it is used.