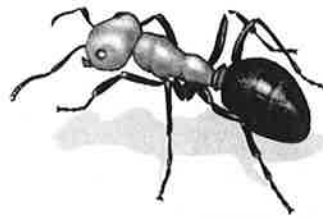


1.5"



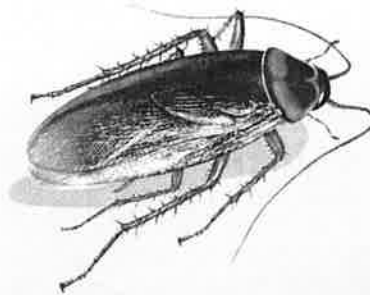
Safer[®]
BRAND

Diatomaceous EARTH



Ant & Crawling Insect Killer

Kills Cockroaches, Ants, Fleas,
Silverfish, & Earwigs,



.375" seal - No Text

.375" seal - No Text

16.5"

KEEP OUT OF REACH OF CHILDREN
CAUTION See back panel for Precautionary
Statements and First Aid
NET CONTENTS: 4 lbs. (1.8kg)

ACTIVE INGREDIENTS:	5% WT
Silicon Dioxide from Diatomaceous Earth:	85.00%
Other Elemental Oxides:	10.00%
Moisture:	05.00%
TOTAL:	100.00%

Safer[®]
BRAND

Diatomaceous
EARTH

4"

37"

1.5"



Diatomaceous EARTH

Safer® Brand Diatomaceous Earth is effective and long lasting when kept dry.
Safer® Brand Diatomaceous Earth is a mechanical insect killer. Insects cannot become immune to its action.

DIRECTIONS FOR USE:

It is a violation of Federal law to use this product in a manner inconsistent with its labeling.

Application Directions:

Safer® Brand Diatomaceous Earth is intended for application with a hand duster, power duster, or similar means of application to areas where crawling insects are found. Apply Safer® Brand Diatomaceous Earth to cracks and crevices with the use of a bulbous duster or other suitable equipment. Apply lightly and uniformly.

Indoor Use: For control of Earwigs, Millipedes, Centipedes, Silverfish, Cockroaches, and Ants: Lightly coat a thin layer of Safer® Brand Diatomaceous Earth in areas where these pests are found or may hide, such as cracks and crevices, behind and beneath refrigerators, cabinets, stoves, garbage cans, and in and around sewer pipes and drains, window frames, and in attics and basements. Dust insects directly if possible. Repeat treatment regularly.

Fleas: Thoroughly treat floor and bedding in and around pets' sleeping quarters. Treat surrounding cracks and crevices, baseboards, carpeting, and wherever fleas are suspected.

Carpet Beetles: Dust along baseboards, carpet edges, under carpeting, furniture, in closets and shelving where these insects are seen or suspected.

Outdoor Use: For control of Ants, Cockroaches, Earwigs, Centipedes, and other Crawling Insects: Lightly coat a thin layer of Safer® Brand Diatomaceous Earth in areas where these insect pests are found such as patios, window and door frames and outdoor sills. Dust around foundations, along ant trails, and around sewer pipes and drains. Repeat treatment as necessary.

STORAGE & DISPOSAL

PESTICIDE STORAGE: Store in a cool dry area away from heat or open flame and out of reach of children and pets.

PESTICIDE DISPOSAL AND CONTAINER HANDLING:

Non-refillable container. Do not reuse or refill this container.

If Empty: Place in trash or offer for recycling if available.

If Partly Filled: Call your local solid waste agency for disposal instructions. Never place unused product down any indoor or outdoor drain.

PRECAUTIONARY STATEMENTS

Hazards to Humans and Domestic Animals:

CAUTION: Causes moderate eye irritation. Avoid contact with eyes. Use adequate ventilation and avoid breathing dust. Wear a suitable dust mask when using this product during prolonged exposure.

FIRST AID	
IF IN EYES:	-Hold eye open and rinse slowly and gently with water for 15-20 minutes. -Remove contact lenses, if present, after the first 5 minutes, then continue rinsing eye. -Call a poison control center or doctor for treatment advice.
Have the product container or label with you when calling a poison control center or doctor or going for treatment. You may also contact the National Pesticide Information Center 1-800-856-7378 for emergency medical treatment advice.	

Buyer assumes all responsibility for safety and use not in accordance with label directions.

Note: Seller warrants that this product complies with the specifications expressed in this label. To the extent consistent with applicable law, Seller makes no other warranties, and disclaims all other warranties, express or implied, including but not limited to warranties of merchantability and fitness for the intended purpose. To the extent consistent with applicable law, Seller's liability or default, breach or failure under this label shall be limited to the amount of the purchase price. To the extent consistent with applicable law, Seller shall have no liability for consequential damages.

3.75" seal - No Text

3.75" seal - No Text

16.5"

Model 51703
HW 14
51703 HW9 AW02700



EPA Reg. No. 50932-12
EPA Est. No. 69208-MO-001 ①
EPA Est. No. 69287-KS-001 ②
EPA Est. No. 69827-KS-002 ③
EPA Est. No. 69287-PA-001 ④

Circled letter is first letter of lot number.

All © Property of Woodstream Corporation
© Copyright 2009 Woodstream Corporation
Manufactured for
Woodstream Corporation
69 Harris Locust Street
Lutz, PA 17543
J5001 000-1819 for information.

Kills Cockroaches, Ants, Fleas,
Silverfish, & Earwigs,

4"

37"