

FIRST AID	
IF SWALLOWED	<ul style="list-style-type: none"> Immediately call a poison control center or doctor. Do not induce vomiting unless told to do so by a poison control center or doctor. Do not give any liquid to the person. Do not give anything by mouth to an unconscious person.
IF IN EYES	<ul style="list-style-type: none"> Hold eye open and rinse slowly and gently with water for 15-20 minutes. Remove contact lenses, if present, after the first 5 minutes, then continue rinsing eye. Call a poison control center or doctor for treatment advice.
IF ON SKIN OR CLOTHING	<ul style="list-style-type: none"> Take off contaminated clothing. Rinse skin immediately with plenty of water for 15-20 minutes. Call a poison control center or doctor for treatment advice.

HOT LINE NUMBER

Have the product container or label with you when calling a poison control center or doctor, or going for treatment.

For additional information on this product (including health concerns, medical emergencies or pesticide incidents), you may call 1-888-740-8712.

NOTE TO PHYSICIAN

Contains petroleum distillate - vomiting may cause aspiration pneumonia.

**PRECAUTIONARY STATEMENTS
HAZARDS TO HUMANS & DOMESTIC ANIMALS**

CAUTION: Harmful if absorbed through skin. Causes moderate eye irritation. Avoid contact with skin, eyes or clothing. Wash thoroughly with soap and water after handling and before eating, drinking, chewing gum, using tobacco or using the toilet.

ENVIRONMENTAL HAZARDS

This product is extremely toxic to aquatic organisms, including fish and invertebrates. Do not apply directly to or near water. Drift and runoff may be hazardous to fish in water adjacent to treated areas. Do not contaminate water when disposing of equipment washwater, or rinsate. See Directions for Use for additional precautions and requirements.

This pesticide is highly toxic to bees exposed to direct treatment on blooming crops or weeds. Do not apply this product or allow it to drift to blooming crops or weeds while bees are actively visiting the treatment area.

PHYSICAL OR CHEMICAL HAZARDS

Contents under pressure. Do not use or store near heat or open flame. Do not puncture or incinerate container. Exposure to temperatures above 130°F (54°C) may cause bursting.

DIRECTIONS FOR USE

It is a violation of Federal law to use this product in a manner inconsistent with its labeling.

READ ENTIRE LABEL BEFORE EACH USE

Use Restrictions

- Except when applying to pets, livestock and clothing, do not allow adults, children, or pets to enter until vapors, mists and aerosols have dispersed, and the treated area has been thoroughly ventilated.
- Except when applying to pets, livestock and clothing, do not allow adults, children, or pets to enter the treated area until sprays have dried.
- In the home, all food processing surfaces and utensils should be covered during treatment or thoroughly washed before use. Exposed food should be covered or removed.
- Remove pets, birds and cover any water inhabited by fish (such as aquariums and ornamental fish ponds) before application. Turn off aquarium filtering systems before spraying and wait approximately 15 minutes after application before turning the filter back on.
- This product is not for use on humans. If lice infestations should occur on humans, use a product labeled for use on humans.
- Application is prohibited directly into sewers or drains, or to any area like a gutter where drainage to sewers, storm drains, water bodies, or aquatic habitat can occur. Do not allow the product to enter any drain during or after application.

- All outdoor applications must be limited to spot or crack-and-crevice treatments only except for the following permitted uses:
 - Treatment to soil or vegetation around structures
 - Application to building foundations, up to a maximum height of 3 feet
- Other than application to building foundations, all outdoor applications to impervious surfaces such as sidewalks, driveways, patios, porches and structural surfaces (such as windows, doors and eaves) are limited to spot and crack-and-crevice applications only.
- Do not water the treated area to the point of runoff.
- Do not make applications during rain.

SHAKE WELL BEFORE USING

Remove protective cap, hold container upright with nozzle away from you. Depress valve and spray from a distance of 12 to 15 inches (8 to 10 inches for clothing, furniture and bedding). Test product on an inconspicuous area before applying to check for possible staining or discoloration. Inspect again after drying. Spray until surface is slightly wet, but not to the point of runoff. Over application may cause damage. Will not stain surfaces or fabrics where water alone causes no damage.

Cockroaches, Waterbugs, Palmetto Bugs, Silverfish, Firebrats, Crickets, Scorpions, Spiders, Millipedes, Centipedes, Sowbugs and Pillbugs: Spray into hiding places such as cracks and crevices, behind sinks, cabinets, along baseboards and floors, around drains and plumbing, hitting insects with spray whenever possible. Spray to the point of dampness but not runoff. Re-treat if infestation occurs, but not more than once every two weeks.

Ants: Spray trails, nests and points of entry. Spray on ants where possible. Re-treat if infestation occurs, but not more than once every two weeks.

STORAGE AND DISPOSAL

Pesticide Storage: Store in a cool, dry area away from children and pets and away from heat, sparks and open flame. Do not transport or store below 32°F (0°C). Protect from freezing. Pesticide Disposal and Container Handling: Do Not Puncture or Incinerate. If empty: Place in trash or offer for recycling if available. If partly filled: Call your local solid waste agency for disposal instructions.

IMPORTANT: READ BEFORE USE

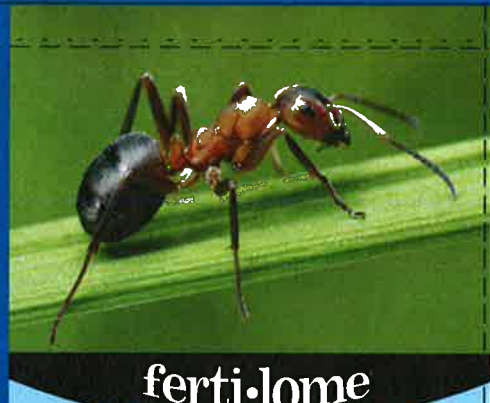
Notice: Seller warrants that this product complies with the specifications expressed in this label. To the extent consistent with applicable law, Seller makes no other warranties, and disclaims all other warranties, express or implied, including but not limited to warranties of merchantability and fitness for the intended purpose. To the extent consistent with applicable law, Seller's liability or default, breach or failure under this label shall be limited to the amount of the purchase price. To the extent consistent with applicable law, Seller shall have no liability for consequential damages.

Distributed by:



230 FM 87 • BONHAM, TEXAS 75418
EPA Reg. No. 1021-2685-7401
EPA Est. No. 11823-GA-1
EPA Est. No. 11823-GA-2
EPA Est. No. 11823-GA-3
Product Questions? 855-270-4776

10040-0716-AP



Ant & Roach Killer



- A Water-Based Aerosol
- Controls Pests For Up To 4 Weeks
- Kills: Cockroaches, Waterbugs, Palmetto Bugs, Silverfish, Firebrats, Crickets, Scorpions, Spiders, Millipedes, Centipedes, Sowbugs and Pillbugs

PRECAUCION AL CONSUMIDOR: Si usted no lee inglés, no use este producto hasta que la etiqueta le haya sido explicada ampliamente. (TO THE USER: If you cannot read English, do not use this product until the label has been fully explained to you.)

ACTIVE INGREDIENT:

Permethrin*	0.50%
OTHER INGREDIENTS:**	99.50%
TOTAL:	100.00%

* Cis/trans ratio: Max. 55% (+/-) cis and Min. 45% (+/-) trans.
** Contains petroleum distillate

**KEEP OUT OF REACH OF CHILDREN
CAUTION**

SEE BACK PANEL FOR ADDITIONAL PRECAUTIONS

NET WEIGHT 16 OZ. (454 G)