

GREEN WAY® LIQUID ANT KILLING BAIT**OPEN PLACEMENT METHOD
NOT TO BE USED IN CALIFORNIA**

Green Way® Liquid Ant Killing Bait can be used to make small, pea-sized placements and or long, thin lines in areas inaccessible to children and pets, where ants are a problem.

Outdoors: For best results place stations in shaded areas or create shade for the bait station. Avoid placing bait station where it will receive direct sunlight whenever possible.

For use around Structures: The number of bait stations to use will vary with the type of ant and the size of the colony.

For initial placement: Place one bait station every fifty feet around the structure to be treated. If any of the bait stations is emptied in less than a week, double the initial placement. Replace baits as needed until feeding activity ceases.

Listed ants are attracted to and will feed on **Green Way® Liquid Ant Killing Bait** until they die. The bait is designed to work slowly and sufficient bait should be made available for at least 14 days of continuous feeding. Replace the bait with fresh bait as needed.

Do not use sprays, foggers or any repellent chemicals or cleaners near the bait containers or placements. This may contaminate the bait and disrupt ant foraging causing the insects to cease feeding.

STORAGE AND DISPOSAL

Do not contaminate water, food or feed by storage or disposal of this product. **Pesticide Storage:** Store product in original container in a cool dry place out of reach of children. Do not allow product to freeze. **Pesticide Disposal and Container Handling:** Nonrefillable container. Do not reuse or refill this container. **If empty:** Place in trash or offer for recycling if available. **If partly filled:** Call your local solid waste agency for disposal instructions. Never place unused product down any indoor or outdoor drain.



MANUFACTURED FOR:

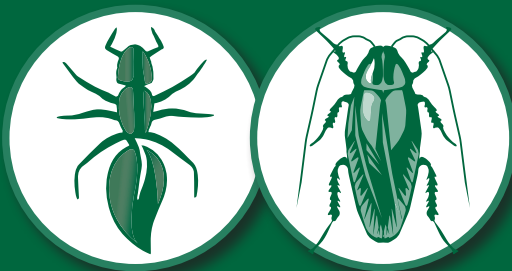
**Innovative
Pest Control
Products**

P.O. Box 143055
Gainesville, Florida 32614 USA

Use Indoors or Outdoors

Green Way

LIQUID ANT KILLING BAIT



HONEYDEW¹ FORMULA NO MESS/NO SPRAYS

**Kills Roaches and Common
Household Ants Including
Argentine and Carpenter Ants**

**KEEP OUT OF REACH OF CHILDREN
CAUTION**

ACTIVE INGREDIENT:

Disodium Octaborate Tetrahydrate 1.0%
Other Ingredients..... 99.0%

TOTAL 100.0%

Net Contents: 1 quart (32 fluid oz.)

EPA Reg. No. 73766-2
EPA Est. No. 70815-GA-001

GREEN WAY® LIQUID ANT KILLING BAIT**Honeydew¹ Formula****PRECAUTIONARY STATEMENTS
Hazards to Humans and Domestic Animals****CAUTION****ENVIRONMENTAL HAZARDS**

Do not apply directly to water.

Do not contaminate water when disposing of equipment wash waters or rinsate.

The use of any pesticide in a manner that may kill or otherwise harm an endangered species or adversely modify their habitat is a violation of Federal law.

DIRECTIONS FOR USE

It is a violation of Federal law to use this product in a manner inconsistent with its labeling.

Do not contaminate food, feed or foodstuffs.

Place baits in areas inaccessible to children and pets.

Use of this product for the control of bed bugs is prohibited.

To kill ants and roaches use indoors or outdoors near homes, apartments, condominiums, schools, hospitals, restaurants, grocery stores, food processing plants (nonfood areas), boats, cruise ships, institutional and commercial buildings, nursing homes, hotels and warehouses.

Green Way® Liquid Ant Killing Bait may be used at full strength, diluted with distilled water or other water-based, food-grade liquid 1:1 to make bait containing 0.5% active ingredient. Bait may be used in Ant Café®, Ant Café® Outdoor, Antopia® Bait Stations, KM AntPro® Bait Stations or other similar stations that are sold separately.

Place the bait station on or near ant activity. Place stations under food cabinets, sinks, stoves, refrigerators, food storage areas, attics, garages, basements, storage areas, closets. Place on exterior windowsills and in doorways to help prevent entry of ants. Some bait stations may be designed to be affixed to a wall, hung on pipes or branches, anchored in the ground or placed on a flat surface. When using bait stations, wash hands thoroughly before handling to remove any odors that may be repellent to ants, i.e., tobacco, garlic, and chemical cleaners.

Lot #

¹Honeydew refers to the excretions of plant-sucking insects that may be used as food by ants.



OPEN PLACEMENT METHOD NOT TO BE USED IN CALIFORNIA

Green Way Liquid Ant Killing Bait® can be used to make small, pea-sized placements and or long thin lines in areas inaccessible to children and pets, where ants are a problem.

Outdoors: For best results, place stations in shaded areas or create shade for the bait station. Avoid placing bait station where it will receive direct sunlight whenever possible.

For use around Structures: The number of bait stations to use will vary with the type of ant and the size of the colony.

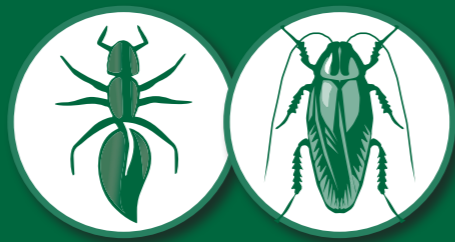
For initial placement: Place one bait station every fifty feet around the structure to be treated. If any of the bait stations is emptied in less than a week, double the initial placement. Replace baits as needed until feeding activity ceases.

Listed ants are attracted to and will feed on Green Way Liquid Ant Killing Bait® until they die. The bait is designed to work slowly, and sufficient bait should be made available for at least 14 days of continuous feeding. Replace the bait with fresh bait as needed.

Do not use sprays, foggers or any repellent chemicals or cleaners near the bait containers or placements. This may contaminate the bait and disrupt ant foraging, causing the insects to cease feeding.

USE INDOORS OR OUTDOORS / NO MESS / NO SPRAYS

Green Way® LIQUID ANT KILLING BAIT



HONEYDEW® FORMULA

Kills Roaches and Common Household Ants Including Argentine and Carpenter Ants

KEEP OUT OF REACH OF CHILDREN

CAUTION

Net Contents: 1 gal. (128 fluid oz.)

EPA Reg. No. 73766-2

EPA Est. No. 70815-GA-001

Lot#

ACTIVE INGREDIENT:

Disodium octaborate tetrahydrate 1.0%

Other Ingredients: 99.0%

TOTAL 100.0%

¹ Honeydew refers to the excretions of plant sucking insects that may be used as food by ants.



MANUFACTURED FOR:
Innovative Pest Control Products
P.O. Box 143055
Gainesville, Florida 32614 USA

Green Way® LIQUID ANT KILLING BAIT

Honeydew® Formula

PRECAUTIONARY STATEMENTS

**Hazards to Humans
and Domestic Animals**

CAUTION ENVIRONMENTAL HAZARDS

Do not apply directly to water.

Do not contaminate water when disposing of equipment wash waters or rinsate.

The use of any pesticide in a manner that may kill or otherwise harm an endangered species or adversely modify their habitat is a violation of Federal law.

DIRECTIONS FOR USE

It is a violation of Federal law to use this product in a manner inconsistent with its labeling.

Do not contaminate food, feed or foodstuffs. Place baits in areas inaccessible to children and pets.

Use of this product for the control of bed bugs is prohibited.

To kill ants and roaches use indoors or outdoors near homes, apartments, condominiums, schools, hospitals, restaurants, grocery stores, food processing plants (nonfood areas), boats, cruise ships, institutional and commercial buildings, nursing homes, hotels and warehouses.

Green Way Liquid Ant Killing Bait® may be used at full strength, diluted with distilled water or other water-based,

food-grade liquid 1:1 to make bait containing 0.5% active ingredient. Bait may be used in Ant Cafe®, Ant Café® Outdoor, Antopia® Bait Stations, KM AntPro® Bait Stations or other similar stations that are sold separately.

Place the bait station on or near ant activity. Place stations under food cabinets, sinks, stoves, refrigerators, food storage areas, attics, garages, basements, storage areas, closets. Place on exterior windowsills and in doorways to help prevent entry of ants. Some bait stations may be designed to be affixed to a wall, hung on pipes or branches, anchored in the ground or placed on a flat surface. When using bait stations, wash hands thoroughly before handling to remove any odors that may be repellent to ants, i.e., tobacco, garlic and chemical cleaners.

STORAGE AND DISPOSAL

Do not contaminate water, food, or feed by storage or disposal of this product.

Pesticide Storage: Store product in original container in a cool dry place out of reach of children. Do not allow product to freeze.

Pesticide Disposal and Container Handling: Nonrefillable container. Do not reuse or refill this container. **If empty:** Place in trash or offer for recycling if available.

If partly filled: Call your local solid waste agency for disposal instructions. Never place unused product down any indoor or outdoor drain.

