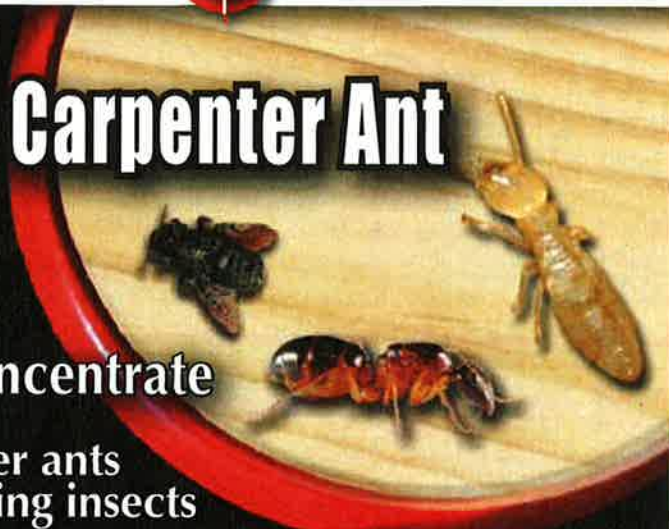


7023948



# Termite & Carpenter Ant Killer Concentrate



**Kills termites, carpenter ants  
and other wood-infesting insects**

**FOR TERMITES: OUTDOOR, POST-CONSTRUCTION,  
RESIDENTIAL USE ONLY. Do not use inside dwellings.  
For use around existing structures,  
not for pre-construction use.**

**Net Contents 16 fl. oz. (473 ml)**

datecode

<b>ACTIVE INGREDIENT:</b>	
Permethrin . . (CAS No. 52645-53-1) . . .	13.30% w/w
<b>OTHER INGREDIENTS*:</b> . . . . .	86.70%
<b>TOTAL:</b> . . . . .	100.00%

\*Contains petroleum distillate.  
EPA Est. No. 4-NY-1 EPA Reg. No. 4-349-91901

**Keep Out of Reach of Children**  
See back panel for additional **WARNING**  
Precautionary Statements and First Aid

10567

# HOMEFRONT TERMITE & CARPENTER ANT KILLER CONCENTRATE

**CONTROLS:** Subterranean Termites, Carpenter Ants, Wood-Infesting Beetles, Ants, Crickets, Earwigs, Fleas, Fire Ants, House Flies, Mosquitoes, Ticks and Wasps. **Mixture ratios vary. Read and use according to label directions.**

**APPLY:** Using sprinkler can, hand sprayer or low-pressure sprayers.

EPA Est. No. 4-NY-1 EPA Reg. No. 4-349-91901

Buyers Guarantee Limited to Label Claims.

©Bonide Products, Inc. All Rights Reserved

Distributed by  
Orgill, Inc.  
3742 Tyndale Drive  
P.O.Box 140  
Memphis, TN 38101



Pint 7023948

OR



## DIRECTIONS FOR USE

It is a violation of Federal law to use this product in a manner inconsistent with its labeling.

### General Precautions and Restrictions

For use on home lawns, flowers and ornamental trees. Do not allow adults, children or pets to enter the treated area until sprays have dried. Do not apply this product in a manner that will contact adults, children or pets, either directly or through drift. Remove pets, birds, and cover fish aquariums before use. Do not apply as a broadcast treatment to indoor surfaces at residential sites including nurseries, day care centers, schools, hospitals and nursing homes.

Not for use on plants being grown for sale or other commercial use or for commercial seed production or for research purposes. Do not water the treated area to the point of run-off. Do not make outdoor applications during rain. All outdoor applications must be limited to spot or crack-and-crevice treatments only, except for the following permitted uses:

- (1) Treatments to soil or vegetation around structures;
- (2) Applications to lawns, turf, and other vegetation;
- (3) Applications to building foundations, up to a maximum height of 3 feet.

Other than applications to building foundations, all outdoor applications to impervious surfaces such as sidewalks, driveways, patios, porches and structural surfaces (such as windows, doors, and eaves) are limited to spot and crack-and-crevice applications only. Application is prohibited directly into sewers or drains, or to any area like a gutter where drainage to sewers, storm drains, water bodies, or aquatic habitat can occur. Do not allow the product to enter any drain during or after application. Not for use in outdoor residential misting systems.

## OUTDOOR PEST CONTROL

For contact and residual spray, mix with water in the following manner:

Finished spray	Insect Control (Fluid Ounces)	Water
0.25%	2 2/3 (5 1/3 Tbs.)	1 gallon
0.25%	2/3 (4 tsps)	1 quart
0.50%	5 1/2 (10 2/3 Tbs.)	1 gallon
0.50%	1 1/3 (8 tsps.)	1 quart

For heavy infestations, use the 0.50% dilution. For lighter infestations and for maintenance purposes, use the 0.25% dilution. One gallon of finished spray is sufficient to treat 1580 linear feet with a 6 inch spray band.

### **PESTS ON OUTSIDE SURFACES OF BUILDINGS**

Use this product to control ants, Asian lady beetle, clover mites, crickets, earwigs, millipedes and sowbugs (pillbugs) on the outside surfaces of buildings. To help prevent infestation of buildings, treat the building foundation to a height of 3 feet where pests are and may find entrance. Also, apply as a spot treatment to outside surfaces of buildings, including porches, screens, window frames, eaves, patios, garages, refuse dumps, and other areas where these pests congregate or have been seen. Repeat treatment as needed to maintain effectiveness.

### **HOUSE FLIES, MOSQUITOES, CLUSTER FLIES, GNATS, FLYING MOTHS OUTDOORS**

For outdoor use only as an aid in reducing annoyance from these insects. Spray outside surfaces of screens, doors, window frames or wherever these insects may enter the room. Also treat surfaces around light fixtures on porches, in garages, and other places where these insects alight or congregate. Repeat as necessary.

### **ANTS, DEER AND LONE STAR TICKS, CRICKETS, FLEAS, CICADAS (LOCUST) AND EARWIGS, OUTDOORS**

For treatment of localized infestations of these insects in outdoor areas where there are weeds or bushy non-crop areas, spray infested areas thoroughly. For ants, thoroughly wet hills and runways. Repeat application as reinfestations warrant and as reinfestations occur.

### **WASPS, HORNETS, YELLOW JACKETS, BEES (including Carpenter Bees) OUTDOORS**

Application should be made in late evening when insects are at rest. Aim spray at nest openings in ground, bushes, and in cracks and crevices which may harbor nests, saturating nest openings and contacting as many insects as possible.

## TO CONTROL FIRE ANTS

Dilute 2 tablespoons of this product in 1 gallon of water. Apply 1 gallon of solution as a gentle rain to each fire ant mound using a sprinkler can. Thoroughly wet the mound and surrounding area to a 4 foot diameter. For best results, apply in cool weather, 65-80°F, or in early morning or late evening hours. Treat new mounds as they appear. Do not disturb the mound prior to treatment. If possible, treat all mounds in the vicinity and treat all colonies which may not as yet have constructed a mound. Larger quantities of solution can be prepared for multiple mound treatments. Equipment to deliver the diluted product as a gentle rain at the rate of 1 gallon per mound is still required. Do not use equipment that produces a pressurized spray as pressurized sprays may disturb fire ants and cause migration, reducing product effectiveness.

## SUBTERRANEAN TERMITES

**DO NOT USE INSIDE DWELLINGS.** For use around existing structure, not for pre-construction use. For post-construction treatment around residential buildings. **Mix 5 fl. oz. of this product per 1 gallon of water** (makes a 0.5% water emulsion). Apply as specified below. One treatment should last up to 5 years if treated soil is left undisturbed.

Kills and controls subterranean termites. Chemicals for soil treatment are used to establish a barrier against termites. The chemical emulsion must be adequately dispersed in the soil to provide a barrier between the wood in the structure and the termite colonies in the soil. Barriers may be established in the soil on the outside perimeter of the house by trenching using a rate of 4 gallons of emulsion per 10 linear feet per foot of depth. A complete termite barrier may require treatment with another EPA registered product to the inside perimeter of the foundation and to other interior critical areas. For these situations, contact a licensed pest control operator for treatment. Do not use under slabs, in crawl spaces, or indoors. If termites are found within the house or structure, contact a licensed pest control operator for treatment.

Remove all wood debris and wood forms. Around piers, pipes, chimney bases and along foundations of poured concrete, dig a trench 6 inches wide and 4 inches deep. For brick and block foundations, dig the trench about 12 inches deep. If footing is more than 12 inches deep, make holes with a crowbar, pipe or a rod about 1 foot apart that extend from the trench bottom to the top of the footing. Make holes closer in hard-packed clay soils. NEVER DIG BELOW THE TOP OF THE FOOTING. Apply the prepared emulsion (or solution) in the trench and to the backfill soil at a rate of 4 gallons per 10 linear feet per foot of depth. Cover treated soil with a thin layer of untreated soil.

For raised porches, terraces and entrance slabs outdoors, drill holes at one foot intervals, 6 inches from the foundation, and pour one-half gallon of emulsion (or solution) into each hole. Refill holes.

Be sure to treat the interiors of accessible hollow block foundations at same rate as above. Do not use in structural voids insulated with rigid foam. Be careful to have adequate ventilation when treating areas under structure. For severe infestations or treatment under slabs with heat ducts or radiating heat pipes, in basements and buildings with insufficient crawl space, etc., contact a licensed pest control operator or termite control service.

**NOTE:** Avoid contamination of public and private water supplies by following these precautions. Do not allow a hose or any type of faucet extension to reach into the termite chemical solution while filling or mixing this material with water. Use anti-backflow or anti-siphonage equipment on all filling equipment. These devices can be purchased at hardware or plumbing supply stores. Use of anti-backflow equipment will help ensure that the user of this chemical will not contaminate domestic water supplies. Refer to FHA (Federal Housing Administration), state and local specifications for safe distances of treatment areas from wells. Do not treat structures that contain cisterns, wells, French drains, or sump systems. Soil in the vicinity of wells, cisterns or ponds should not be treated. For those situations, contact the local Cooperative Extension Service or consult a commercial pest control service. Do not treat soil that is water saturated or frozen or in any conditions where runoff or movement from the treatment area (site) is likely to occur.

### WHEN TO REAPPLY

Reapplication for subterranean termites should only be made when there has been a disruption of the chemical barrier in the soil due to construction, excavation, landscaping, etc. Reapplication should be made as a spot treatment to those areas. Annual reapplication of the entire premises must be avoided.

### CARPENTER ANTS, CARPENTER BEES & WOOD-INFESTING BEETLES

For localized treatment in and around residential buildings. **Mix 5 fl. oz. of this product in 1 gallon of water** and apply as directed. Allow spray to dry before allowing people or pets to occupy treated areas.

**Carpenter Ants:** Adjust sprayer to deliver a coarse spray. Apply mixture around doors, windows and other points of entry. Spray into cracks and crevices where ants or their nests are suspected.

**Carpenter Bees & Wood-Infesting Beetles (Old House Borer and Powder Post):**

To protect wood and control damage by these wood-infesting insects, thoroughly apply mixture to wood using a coarse spray or using a paintbrush. Do not allow runoff to occur.

### **STORAGE & DISPOSAL**

**Pesticide Storage:** Do not store at temperatures below 40°F (4.5°C). Store product in original container in a locked storage area, inaccessible to children and pets. Store and transport in upright position.

**Pesticide Disposal & Container Handling:** *If empty* - Nonrefillable container. Do not reuse or refill this container. Place in trash or offer for recycling if available. *If partly filled* - Call your local solid waste agency for disposal instructions. Never place unused product down any indoor or outdoor drain.

### **FIRST AID**

Have the product container or label with you when calling a poison control center or doctor, or going for treatment. You may also contact the National Pesticide Information Center at 1-800-858-7378 for emergency medical treatment information.

**If in eyes:** Hold eye open and rinse slowly and gently with water for 15-20 minutes. Remove contact lenses, if present, after the first 5 minutes, then continue rinsing eye. Call a poison control center or doctor for treatment advice.

**If inhaled:** Move person to fresh air. If person is not breathing, call 911 or an ambulance, then give artificial respiration, preferably by mouth-to-mouth, if possible. Call a poison control center or doctor for further treatment advice.

**If on skin or clothing:** Take off contaminated clothing. Rinse skin immediately with plenty of water for 15-20 minutes. Call a poison control center or doctor for treatment advice.

**If swallowed:** Call poison control center or doctor immediately for treatment advice. Have person sip a glass of water if able to swallow. Do not induce vomiting unless told to do so by the poison control center or doctor. Do not give anything by mouth to an unconscious person.

**Note to Physician:** Contains petroleum distillates. Vomiting may cause aspiration pneumonia.



**PRECAUTIONARY STATEMENTS**

**HAZARDS TO HUMANS AND DOMESTIC ANIMALS - WARNING**

Causes substantial but temporary eye injury. Do not get in eyes or on clothing. Wear goggles or safety glasses. Avoid contact with skin. Prolonged or frequently repeated skin contact may cause allergic skin reactions in some individuals. Wash thoroughly with soap and water after handling and before eating, drinking, chewing gum, using tobacco or using the toilet. Remove and wash contaminated clothing before reuse.

**ENVIRONMENTAL HAZARDS**

This pesticide is extremely toxic to aquatic organisms, including fish and invertebrates. To protect the environment, do not allow pesticide to enter or run off into storm drains, drainage ditches, gutters or surface waters. Applying this product in calm weather when rain is not predicted for the next 24 hours will help to ensure that wind or rain does not blow or wash pesticide off the treatment area. Rinsing application equipment over the treated area will help avoid run off to water bodies or drainage systems. This pesticide is highly toxic to bees exposed to direct treatment on blooming crops or weeds. Do not apply this product or allow it to drift to blooming crops or weeds while bees are actively visiting the treatment area.

**PHYSICAL AND CHEMICAL HAZARDS**

Do not use or store near heat or open flame. Flashpoint minimum of 105°F (49°C).

For Information on pesticide products (including health concerns, medical emergencies, or pesticide incidents), call the National Pesticide Information Center at 1-800-858-7378

To the extent consistent with applicable law, buyer assumes all risks for use of this product when not used according to label directions or established safe practice.