



**SAFE**  
Around Children  
& Pets  
**NON-TOXIC**

SEGURO Cerca de niños y mascotas. No es tóxico

**ECOSMART**

**-THE SAFE PESTICIDE BRAND**

# HOME PEST CONTROL

**FOR INDOOR & OUTDOOR USE**

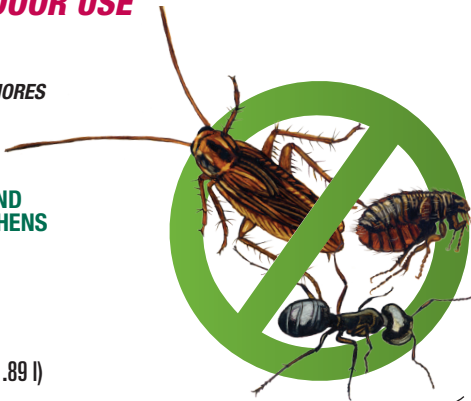
**CONTROL DE PLAGAS  
PARA EL HOGAR  
PARA USO EN INTERIORES Y EXTERIORES**

**KILLS AND REPELS  
HOME INVADING PESTS**

**USE IN ALL AREAS IN & AROUND  
YOUR HOME, INCLUDING KITCHENS  
ENVIRONMENTALLY SAFE**

**WORKS FAST!  
KILLS BY CONTACT**

**NET CONTENTS: 64 FL. OZ. (½ GAL / 1.89 l)**  
ECSM-75182-0000





**EcoSMART**  
-THE SAFE PESTICIDE BRAND-

**HOME PEST CONTROL**  
FOR INDOOR & OUTDOOR USE

Now there is an insecticide that is **safe to use around children and pets.** EcoSMART<sup>®</sup> Home Pest Control is made from a proprietary blend of essential plant oils. It kills bugs fast and repels crawling insects without any synthetic toxins or harmful residue. It's safe, it's effective. It's smart – Naturally.

To learn more about EcoSMART<sup>®</sup> and its entire line of pesticide products, please visit our web site at [www.ecosmart.com](http://www.ecosmart.com).

**LIGHT HERBAL SCENT FROM PLANT OILS.**

**KILLS AND REPELS:** Common household pests including Ants, Cockroaches, Beetles, Crickets, Fleas, Ticks and Spiders.

**DIRECTIONS FOR USE: INSTRUCCIONES DE USO:**

**SHAKE WELL BEFORE EACH USE. READ ENTIRE LABEL AND USE ACCORDINGLY.**  
**AGITE BIEN ANTES DE CADA USO. LEA TODA LA ETIQUETA Y SIGA LAS INSTRUCCIONES DE USO.**

**LA TRADUCCIÓN COMPLETA EN ESPAÑOL DE ESTA ETIQUETA PUEDE SER ENCONTRADA EN [WWW.ECOSMART.COM](http://WWW.ECOSMART.COM)**

**BEFORE YOU USE**

- Ready-to-use. Do not dilute.
- Remove sprayer from holder and pull tubing out of sprayer handle. The black connector fits in the hole on top of the cap.
- This product contains plant oils which are inherently fragrant. For people and pets who are sensitive to fragrances, test a small application before using over a larger area.
- While staining is unlikely, as with most household products it is recommended to test for possible staining on an inconspicuous area on surfaces to be sprayed. A test duration of 48 hours or more is recommended. This product is not recommended for use on vinyl siding, or window or door casements made of vinyl moulding.

**HOW TO USE – Shake Well Before Each Use**

**SPRAYING DIRECTIONS**

- Turn nozzle to ON "Spray," or ON "Stream" position, before using.
- Hold container upright while spraying. Spray about 12 inches from surface being treated.
- Spray until wet. For carpets and rugs, spray until damp.

**FOR INDOOR APPLICATIONS:**

Spray areas where pests are found, live and hide, including cracks and crevices in walls/cabinets, beneath and behind built-in appliances, sinks, cabinets, around plumbing pipes, garbage cans, window frames and doorways and in attics, basements and crawl spaces. Contact as many pests as possible. Repeat as necessary. If applying in a pantry, it is recommended to remove items from pantry to allow best access.

**FOR CONTROL OF FLEAS AND TICKS:**

Thoroughly spray around resting quarters, nearby cracks and crevices, along and behind baseboards, window and door frames and localized areas of floor and floor covering where fleas and ticks may be present. Spray until damp but not soaking. Pet bedding should be replaced with clean, fresh bedding after treating area. To control the source of flea infestations, pets should be treated by a veterinarian or with a product approved for application to animals. Repeat as necessary.

**FOR OUTDOOR APPLICATIONS:**

If applying outside as a barrier treatment, remove debris and leaf litter from around the foundation, cut back vegetation and branches that touch the foundation/house and remove or rake back deep mulch, rocks or other potential pest harborage sites next to the foundation.

Apply a 12 inch wide band around the exterior perimeter of your home. Apply up to 2 feet along the foundation, around window frames and doorways, around vents, openings where utilities enter home, and other entry points into home. Apply to problem areas such as around wood piles, storage sheds and other areas of pest infestation. Spray on ant trails and mounds. Spray until thoroughly and uniformly wet. Contact as many pests as possible. Repeat as necessary.

**PRECAUTIONARY STATEMENTS:** This product is safe for use around children and pets when used as directed.

Caution – We recommend good safety practices when using any pesticide, such as avoiding contact with eyes and skin and keeping out of the reach of children and pets. If product gets in eyes, flush with water. If on skin, wash with soap and water. If irritation persists, contact a physician.

**STORAGE AND DISPOSAL:** Turn nozzle to off position. Store in original container in a cool, dry area and avoid excess heat. Keep from freezing. Do not reuse container. Offer for recycling if available or discard in trash.

**LIMITATION OF LIABILITY:** To the extent consistent with applicable law, Kittrich makes no warranties of merchantability or of fitness for a particular purpose, nor any other express or implied warranty except as stated above. Buyer assumes all responsibility for safety and use not in accordance with label, directions and precautionary statements.

Kittrich represents that this product is a Minimum-Risk pest control product, and qualifies for exemption from EPA registration under the Federal Insecticide, Fungicide and Rodenticide Act (FIFRA).

**Active Ingredients:**

2-Phenethyl Propionate.....	5.00%
Rosemary Oil .....	0.50%
Clove Oil .....	0.50%
Thyme Oil .....	0.25%
<b>Inert Ingredients*</b> .....	<b>93.75%</b>
Total .....	<b>100.00%</b>

\*Water, Wintergreen Oil, Potassium Oleate, Vanillin, Sodium Benzoate, Polyglyceryl Oleate

Questions or Comments?  
Call **1-800-321-1741**

**EcoSMART**  
-THE SAFE PESTICIDE BRAND-

Manufactured for:  
Kittrich Corporation  
1585 W. Mission Blvd.  
Pomona, CA 91766



ECSM-33506-01

9559100124 2  
8

ECSM-75183-0000. Formula No. Kit 033. EcoSMART<sup>®</sup> and EcoSMART –The Safe Pesticide Brand<sup>®</sup> are registered trademarks of Kittrich Corporation. SAFE logo is a trademark of Kittrich Corporation.  
©2017 Kittrich Corporation. All Rights Reserved. MADE IN USA  
REV 09/16