

THE NEW AMERICAN LAWN

Insect pests can be particularly troublesome if left unchecked. Jonathan Green Organic Insect Control is safe to use around children and pets and will not harm the environment. It kills bugs fast and repels crawling insects without synthetic toxins or residue. Research shows that plants produce oils that provide natural defenses against insects. Jonathan Green Organic Insect Control has a unique combination of fresh, natural scents from plant oils which kills bugs fast and also has strong repellency characteristics while having no adverse effect on mammals, birds or fish.

KILLS AND REPELS

Ants (Including Carpenter, Red Harvester, Pavement, Odorous, Pyramid, Argentine), Armyworms, Billbugs, Brimstoneflies, Centipedes, Chiggers, Chinch Bugs, Crickets, Cutworms, Fleas, Earwigs, Firebrats, Grasshoppers, Ground Beetles, Leafhoppers, Mealybugs, Millipedes, Pillbugs, Scorpions, Spiders, Springtails, Ticks, Wireworms and other insects.

ACTIVE INGREDIENTS

Thyme Oil	2.0%	*Corn Cob,
2-Phenethyl propionate	0.6%	Wintergreen Oil
Other Ingredients*	97.4%	
Total	100.0%	

DIRECTIONS FOR USE

READ ENTIRE LABEL AND USE ACCORDINGLY.

WHERE TO USE:

Lawns, around Home Foundations (perimeter treatment), Landscapes (Ornamental and Flower Gardens).

HOW TO APPLY:

[Use higher application rates for severe infestations - re-apply as needed]

LAWNS:

Use a spreader to uniformly apply 2 to 5 lbs. over 1,000 square feet. (1,000 sq. ft. = 20 ft. x 50 ft.) Re-apply every two to four weeks or as needed.

LANDSCAPES:

(Ornamentals and Flowers): Using a handheld spreader or spread by hand (wear a protective glove and wash hands with soap and water afterwards) apply 1 to 2 lbs. evenly over each 500 sq. ft. area (500 sq. ft. = 5 ft. x 100 ft.). Re-apply every four to six weeks or as needed.

HOME FOUNDATIONS:

Using a handheld spreader or spread by hand (wear a protective glove and wash hands with soap and water afterwards) evenly apply a 2 ft. wide band next to the home foundation. Use 1 to 2 lbs. for each 500 linear ft. (500 linear ft. = 2 ft. x 250 ft.) Apply under/around all landscaping adjacent to home, especially mulch. Re-apply every two to four weeks or as needed.

NOTE:

THE GRANULES SHOULD NOT BE WATERED AFTER APPLICATION.

YOU MAY NEED TO RE-APPLY AFTER A HEAVY RAINFALL.

CHILDREN AND PETS CAN RE-ENTER THE TREATED AREA AFTER APPLICATION.

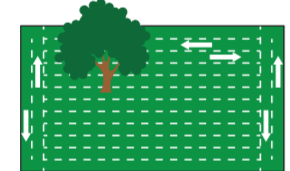
SPREADER SETTINGS

Spreader settings given are approximate and variation can occur between identical models. User should calibrate spreader by accurately weighing a few pounds into your spreader and applying to a measured area. Then adjust spreader setting if necessary to assure correct rate of application.

ROTARY SPREADERS		2 lb. Rate 5,000 sq. ft.	5.0 lb. Rate 2,000 sq. ft.	DROP SPREADERS		2 lb. Rate 5,000 sq. ft.	5.0 lb. Rate 2,000 sq. ft.
Jonathan Green				Agri-Fab		2	3
New American Lawn		3	5	Central		6	7
New American Lawn Deluxe		13 - 14	16	EZ Republic		6	7
New American Lawn Pro		13 - 14	16	Earthway		3	3
New American Hand Spreader		2	3	Ames		14	16
Agri-Fab		4	6	Ortho		6	7
Cyclone		4 - 5	6 - 7	Precision Greenline		2-1/2	3
Earthway				Red Devil			
ACE - Greenthumb				Scotts			
Agway - Fertilome		10	14	Turf Builder Classic			
Lesco		16 - F	22 - J	AccuGreen			
Ortho		4	6	1000-2000-3000		5.5	10
Precision Greenline (Red Devil)		4-1/2	7	PF4 5		6	7
Scotts Rotary Spreaders		2-1/2 - 3	4-1/2 - 5				
Scotts EasyGreen		20	23				
Spyker		4-5	6-7				

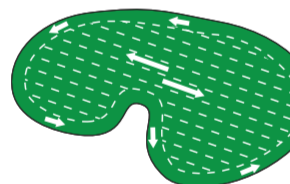
For rectangular lawns

Apply two header strips across each end for a turning area. Then apply back and forth in the longest direction.



For irregular-shaped lawns

Apply a header strip around the entire lawn for a turning area, then apply back and forth.



Note:

- Each pass should be within 5 feet of each other to ensure an overlap.
- Do not leave spreader open when making turns.
- For best results, do not apply on a windy day.
- Swath will vary due to weather conditions, product used and walking speed.
- To determine how much coverage you need, multiply the length of your lawn by its width. This equals your total square footage. Deduct any non-lawn areas (house, gardens, walkways, etc.). One bag treats up to 5,000 sq. ft.

If your spreader is not listed here, or if you bought a Jonathan Green spreader prior to 2017, please visit www.jonathangreen.com for the correct setting.

NOTE

The primary active ingredients in Jonathan Green Organic Insect Control are approved as direct food additives or classified as GRAS (Generally Recognized As Safe) by the US Food & Drug Administration.

Jonathan Green represents that this product is a Minimum-Risk pest control product and qualifies for exemption from EPA registration under the Federal Insecticide, Fungicide, and Rodenticide Act (FIFRA).

2-Phenethyl propionate is a derivative of peanut oil, but it does not contain the enzyme that triggers peanut allergies.

PRECAUTIONARY STATEMENTS

CAUTION: We recommend good safety practices when using any pesticide, such as avoiding contact with eyes and skin and keeping out of the reach of children and pets. If product gets in eyes, flush with water. If on skin, wash with soap and water. If irritation persists, contact a physician.

IMPORTANT: READ BEFORE USE:

Read the entire Directions for Use and the Warranty Disclaimer and Limitation of Liability before using this product. If terms are not acceptable, return the unopened product container at once. By using this product, user or Buyer accepts the following Warranty Disclaimer and Limitation of Liability:

LIMITATION OF LIABILITY

To the extent consistent with applicable law, Jonathan Green makes no warranties of merchantability or of fitness for a particular purpose, nor any other express or implied warranty except as stated above. Buyer assumes all responsibility for safety and use not in accordance with label directions and precautionary statements.

STORAGE AND DISPOSAL

Store in a cool, dry area and avoid excessive heat. For bags after partial use, reseal opened bag. Discard empty bag in trash.



Sign up to receive timely lawn tips
www.jonathangreen.com



My Pledge Of Satisfaction

We have made every effort in the formulation of this product to insure that you will be satisfied with the results. If, for any reason, you are not satisfied, please write and describe the problem. Our lawn specialists will make every effort to assure your success.



Distributed by Jonathan Green, Inc. POB 326, Farmingdale, NJ 07727

022021 3/6/16



ORGANIC
INSECT CONTROL
FOR LAWNS & GARDENS
Treats up to
5,000 sq. ft.



Jonathan Green
QUALITY LAWNS SINCE 1881

Treats up to 5,000 sq. ft.



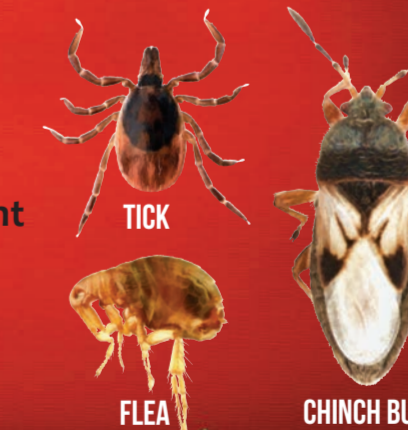
ORGANIC INSECT CONTROL

FOR LAWNS & GARDENS

Kills and repels over 100 insect pests

Safe around children, pets and the environment

May be used for perimeter home treatments



10 LBS. NET WEIGHT (4.53 Kg)



ORGANIC
INSECT CONTROL
FOR LAWNS & GARDENS

Treats up to
5,000 sq. ft.



Treats up to
5,000 sq. ft.

ORGANIC
INSECT CONTROL
FOR LAWNS & GARDENS

