

GRO • FINE[®] Crabgrass Preventer plus Lawn Food

Micro Vent holes

GRO • FINE Crabgrass Preventer plus Lawn Food

APPLY IN EARLY SPRING

30 - 0 - 4

- Easy to Use
- Controls Crabgrass and Other Annual Grasses
- Selective Herbicide Plus Fertilizer Combination
- Slow Release Nitrogen for Continuous Greening



**KEEP OUT OF REACH OF CHILDREN
CAUTION**

SEE BACK PANEL FOR ADDITIONAL PRECAUTIONARY STATEMENTS.
STOP! READ THE ENTIRE LABEL FIRST. OBSERVE ALL PRECAUTIONS AND FOLLOW DIRECTIONS CAREFULLY.

EPA Reg. No. 8378-53
EPA Est. No. 8378-IN-1

ACTIVE INGREDIENT:
Dithiopyr* 0.13%
INERT INGREDIENTS 99.87%
TOTAL 100.000%
*CAS # 97886-45-8

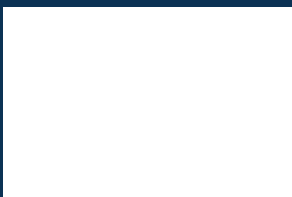
Not for use on turf being grown for sale or other commercial use, or for commercial seed production, or for research purposes.

NOTICE: Before using this product, read entire Precautionary Statements and Instructions. If the Terms and Conditions of Use are not acceptable, return the product unopened within thirty days of purchase to the place of purchase.

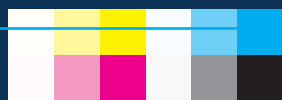
**COVERS 5,000 SQUARE FEET
NET WT. 13 LBS. (5.89 kg.)**

Sustained Uniform Release Fertilizer
SURFCOTE[™]
Continuously Provides Nutrients

GRO • FINE[®] Crabgrass Preventer plus Lawn Food



GF450E



.50"

4.00" (+/- 1/8")

Micro Vent Holes

MICRODOT

Micro Vent holes
1.50" (+/- 1/8")
From Edge of Seal



GRO • FINE® Crabgrass Preventer plus Lawn Food

Net Wt. 13 lbs. (5.89 kg) Treats 5,000 sq. ft.

GUARANTEED FERTILIZER ANALYSIS

TOTAL NITROGEN (N)	30%	F1492
30.0% Urea Nitrogen*		
SOLUBLE POTASH (K ₂ O)	4%	
Derived from: polymer-coated urea, urea, and potassium chloride.		
* 15% Slowly Available Urea Nitrogen from Polymer Coated Urea.		
CHLORINE (Cl), no more than	4%	

FIRST AID

IF IN EYES	<ul style="list-style-type: none"> Hold eye open and rinse slowly and gently with water for 15-20 minutes. Remove contact lenses, if present, after the first 5 minutes, then continue rinsing eye. Call a poison control center or doctor for treatment advice.
IF INHALED	<ul style="list-style-type: none"> Move person to fresh air. If person is not breathing, call 911 or an ambulance, then give artificial respiration, preferably by mouth-to-mouth, if possible. Call a poison control center or doctor for further treatment advice.

HOT LINE NUMBER

Have the product container or label with you when calling a poison control center or doctor, or going for treatment. You may also contact **1-800-858-7378** from 6:30 a.m. to 4:30 p.m. Pacific Time, everyday, for emergency medical treatment information.

PRECAUTIONARY STATEMENTS HAZARDS TO HUMANS and DOMESTIC ANIMALS

CAUTION: CAUSES EYE IRRITATION. HARMFUL IF INHALED. Avoid contact with eyes or clothing. Wash thoroughly with soap and water after handling. Avoid breathing dust. Remove contaminated clothing and wash before reuse. Prolonged or frequently repeated skin contact while handling this material may cause allergic reactions in some individuals.

ENVIRONMENTAL HAZARDS

This pesticide is toxic to fish and highly toxic to other aquatic organisms including oysters and shrimp. Use with care when applying to turf areas adjacent to any body of water. Drift or runoff may adversely affect aquatic organisms in adjacent aquatic sites. Do not apply when weather conditions favor drift from treated areas. To protect the environment, do not allow pesticide to enter or run off into storm drains, drainage ditches, gutters or surface waters. Applying this product in calm weather when rain is not predicted for the next 24 hours will help to ensure that wind or rain does not blow or wash pesticide off the treatment area. Sweeping any product that lands on a driveway, sidewalk, or street, back onto the treated area of the lawn or garden will help to prevent run off to water bodies or drainage systems.

DIRECTIONS FOR USE

It is a violation of Federal law to use this product in any manner inconsistent with its labeling.

GENERAL INFORMATION

This product is a combination product that provides both weed control and the required nutrients for optimum turfgrass growth in a single product.

It is a selective herbicide that can be applied up to 4 weeks later than other crabgrass preventers and will provide up to 4 months control of crabgrass.

It will also control other grass and broadleaf weeds listed on this label if applied prior to their seed germination.

This product may be applied to established lawns and ornamental turfgrasses composed of the following tolerant grass species:

Cool-Season Turfgrasses		Warm-Season Turfgrasses	
Creeping Bentgrass	Perennial Ryegrass	Bahiagrass	Centipedegrass
Fines Fescues	Tall Fescues	Bermudagrass	St. Augustinegrass
Kentucky Bluegrass		Buffalograss	Zoysiagrass
		Carpetgrass	

This product may be applied in the spring or fall prior to the weed seed germination in established lawns and ornamental turfgrass.

This product provides preemergence control of crabgrass and other weeds when applied prior to their germination.

For control of other grasses and broadleaf weeds, this product must be applied as a preventative treatment before their emergence.

Improved weed control may occur when this product is applied within a few days after mowing and further mowing is delayed until the turfgrass has been watered or receives adequate rainfall to dissolve the fertilizer granules.

RESEEDING, OVERSEEDING, OR SPRIGGING

Reseeding, overseeding, or sprigging of turfgrasses listed on this label into areas that have been previously treated with this product must be delayed until 8 weeks after application. Reseeding, overseeding, or sprigging before 8 weeks after application may injure or prevent the establishment of the newly reseeded, overseeded or sprigged turfgrass.

USE ON NEW LAWNS OF KENTUCKY BLUEGRASS, PERENNIAL RYEGRASS AND/OR FALL FESCUE

To establish a new lawn of Kentucky Bluegrass, Perennial Ryegrass and/or Fall Fescue, this product may be applied 2 weeks after the first sign of germination. For other tolerant turfgrasses listed on this label, wait until the grass is well established (2 mowings) before applying this product.

USE PRECAUTIONS

- This product should only be applied to lawns and ornamental turfgrasses that are well established. Do not apply to lawns or turfgrasses that are under stress.
- DO NOT apply more than 2.6 pounds of this product/ 1,000 sq. ft. per application and no more than 5.2 pounds of this product/ 1,000 sq. ft. per year (1,000 square feet = 100 X 10 feet).
- DO NOT use clippings from treated turf for mulching around vegetables or fruit trees.
- Keep people and pets off treated areas until dust has settled.

APPLICATION DIRECTIONS

This product will provide control of crabgrass and other grass and broadleaf weeds listed below when applied prior to germination in established lawns and ornamental turfgrasses.

Weeds Controlled by this product:

Grass Weeds:		Broadleaf Weeds:	
Annual Bluegrass	Green Foxtail	Bittercrass	Creeping Oxalis
Annual Ryegrass	Kikuyugrass (seedling)	Buttercup Oxalis	Henbit
Barnyardgrass	Perennial Ryegrass	Carolina Geranium	Parsley-piert
Crabgrass	Smutgrass (seedling)	Chickweed	Pineappleweed
Crowfootgrass	Yellow Foxtail	Common Lespedeza	Prostrate Spurge
Goosegrass		Common Purslane	Spotted Spurge
		Corn Speedwell	Yellow Woodsorrel

APPLICATION TIMING

This product may be applied either in the spring or in the fall for the control of weeds.

When this product is applied in the fall, a sequential or second application may be made the following spring to provide up to 4 months control of weeds.

If this product is applied in the fall, DO NOT reseed, overseed or sprig turfgrasses before 12 weeks after application of this product due to potential injury to newly reseeded, overseeded or sprigged turfgrasses.

LENGTH OF CONTROL

This product will provide up to 4 months of control of listed weeds when applied according to label directions.

The actual length of control will vary depending on use rate, weather conditions, conditions of the turfgrass, intensity of weed pressure, and the location or "Region" within the United States that this product is being applied.

RECOMMENDED USE RATES

Apply 2.6 pounds of product per 1,000 square feet of turfgrass.

Typically a lawn utilizes 1 to 4 pounds of nitrogen per 1,000 sq.ft. per growing season. When applied as directed, this product provides 0.78 pounds of nitrogen per 1,000 sq.ft. Contact your local Extension Service for information specific to your geographic region.

DO NOT apply more than 2.6 pounds of this product per 1,000 sq. ft. per application and no more than 5.2 pounds of this product/ 1,000 sq. ft. per year (1,000 square feet = 100 X 10 feet).

In the State of New York: Do not exceed 0.25 pounds active ingredient Dithiopyr per acre per year (4.4 lbs. product/1,000 sq. ft.). Do Not Apply More Than Once Per Year To The Same Area.

APPLICATION EQUIPMENT AND INSTRUCTIONS

This product can be applied with a drop or rotary spreader designed to apply granular herbicides. For best results, apply this product evenly and uniformly over the turfgrass area avoiding streaking, skips or overlaps. Avoid the use of spreaders that would apply this product in narrow rows or concentrated bands.

Before each application, calibrate the spreader according to the equipment manufacturer's directions. Adjust the spreader settings such that the spreader delivers the appropriate application rates of this product as recommended above. A more uniform application can be made by spreading one-half of the recommended amount of this product over the turfgrass area and then applying the remaining one-half of this product at a right angle to the previous application direction.

Check application equipment frequently to insure equipment is functioning properly and applying a uniform distribution of this product.

SPREADER SETTINGS

Apply 2.6 pounds of product per 1,000 square feet of turfgrass. One bag covers 5,000 square feet.

SPREADER	2.6 Lbs. per 1,000 sq. ft.	SPREADER	2.6 Lbs. per 1,000 sq. ft.
SCOTT'S ROTARY	5 - 6	CHAPIN (8303, 82050)	14 - 16
EARTHWAY	14 - 17	EARTHWAY (DROP)	10 - 12
AGRIFAB	2 - 4	SCOTT'S (DROP)	5 - 6
LAWNCRAFTER	2 - 4	LAWNCRAFTER (DROP)	2 - 4
CHAPIN (8000A, 8001A)	2		

STORAGE AND DISPOSAL

Do not contaminate water, foodstuffs, feed, or seed by storage or disposal.

PESTICIDE STORAGE: Store this product only in its original container in a dry, cool, secured storage area. Do not contaminate water, foodstuffs, feed, or seed by storage or disposal.

PESTICIDE DISPOSAL: As a responsible environmental practice, where possible, it is recommended that all of the contents of the bag be used, carefully following label directions and precautions.

IF EMPTY: Do not reuse this bag. Place in trash.

IF PARTLY FILLED: Call your local solid waste agency for disposal instructions. Never place unused product down any indoor or outdoor drain.

SPILL: In case of spill, sweep up and dispose of material according to Pesticide Disposal directions listed above.

CONTAINER DISPOSAL: Nonrefillable container. Do not reuse or refill this container, offer for recycling if available.

Information regarding the contents and levels of metals in this product is available:
On the Internet at <http://www.aapfco.org/metals.htm>

TERMS AND CONDITIONS OF USE

If terms of the following Warranty Disclaimer, Inherent Risks of Use, and Limitation of Remedies are not acceptable, return unopened package at once to the seller for a full refund of purchase price paid. Otherwise, use by the buyer or any other user constitutes acceptance of the terms under Warranty Disclaimer, Inherent Risks of Use and Limitations of Remedies.

WARRANTY DISCLAIMER

Seller warrants that this product conforms to the chemical description on the labels and is reasonably fit for the purposes stated on the labels when used in strict accordance with the directions, subject to the inherent risks set forth below. SELLER MAKES NO OTHER EXPRESS OR IMPLIED WARRANTY OF MERCHANTABILITY OR FITNESS FOR A PARTICULAR PURPOSE OR ANY OTHER EXPRESS OR IMPLIED WARRANTY.

INHERENT RISKS

It is impossible to eliminate all risks associated with use of this product. Plant injury, lack of performance, or other unintended consequences may result because of such factors as use of the product contrary to label instructions (including conditions noted on the label, such as unfavorable temperature, soil conditions, etc.), abnormal conditions (such as excessive rainfall, drought, tornadoes, hurricanes), presence of other materials, manner of application or other factors, all of which are beyond the control of the Seller. All such risks shall be assumed by buyer.

LIMITATION OF REMEDIES

The exclusive remedy for losses or damages resulting from this product (including claims based on contract, negligence, strict liability, or other legal theories), shall be limited to, at Seller's election, one of the following:

- Refund of purchase price paid by buyer or user for product bought, or
- Replacement of amount or product used.

Seller shall not be liable for losses or damages resulting from handling or use of this product unless Seller promptly notifies of such loss or damage in writing. In no case shall Seller be liable for consequential or incidental damages or losses.

The terms of this Warranty Disclaimer and Inherent Risks of Use above and this Limitation of Remedies cannot be varied by any written or verbal statements or agreements. No employee or sales agent of Seller or the Seller is authorized to vary or excess the terms of the Warranty Disclaimer or this Limitation of Remedies in any manner.



MANUFACTURED BY: Knox Fertilizer Company, Inc., P.O. Box 248, Knox, IN 46534

GF450E