

RESEALABLE



TEAR TO OPEN/ PRESS TO RESEAL

PATENTED &  
OTHER PATENTS PENDING

# RatX™ BAIT DISCS

## FOR THE EFFECTIVE CONTROL OF RATS AND MICE

- ✓ Formulated for Indoor & Outdoor Use
- ✓ Naturally Derived\* Rat & Mouse Control
- ✓ Safe for Use Around Livestock & Pets When Used as Directed

ACTIVE INGREDIENTS:

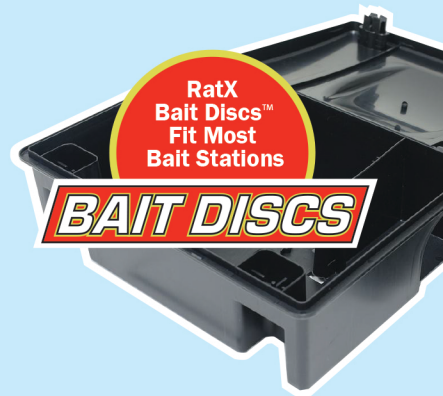
*Corn gluten meal .....	42.0%
*Sodium chloride .....	3.0%
*Citric acid .....	2.0%
*Putrescent whole egg solids .....	1.5%
*Soybean oil .....	1.0%

INERT INGREDIENTS:

*Corn cob, *Cellulose, Paraffin wax, *Fish oil, *Calcium carbonate, *Coffee grounds, *Sorbitol .....	50.5%
TOTAL .....	100.0%



PERFECT FOR BOTH  
PROFESSIONAL  
AND DIY USE



KEEP OUT OF REACH OF CHILDREN  
CAUTION

Net Weight: 1lb. /454 gm.



# FOR THE EFFECTIVE CONTROL OF RATS AND MICE

PATENTED &  
OTHER PATENTS PENDING



- ✓ Formulated for Indoor & Outdoor Use
- ✓ Naturally Derived\* Rat & Mouse Control
- ✓ Safe for Use Around Livestock & Pets When Used as Directed

## SUGGESTED BAIT LOCATIONS FOR THE EFFECTIVE CONTROL OF RATS & MICE:

- ✓ Around Ponds & Water Features
- ✓ Holes Under a Patio and in Lawns
- ✓ Access Points To Buildings or Under Garden Structures
- ✓ Near Livestock & Poultry Housing



PERFECT FOR BOTH  
PROFESSIONAL  
AND DIY USE



REORDER # : 620118

Manufactured by:  
ConSeal International, Inc.  
90 Kerry Place, Suite 2  
Norwood, MA 02062

Distributed by:  
EcoClear Products, Inc.  
4975 City Hall Blvd  
North Port, FL 34290

Customer Service: 888-511-7289

RatX Bait Discs™ are created from a unique patented blend of food-grade ingredients to increase performance and palatability. RatX Bait Discs are a novel approach to a safe and effective means to rid an area of rats and mice, and the problems associated therein when used as directed. Both factors aid rat and mouse acceptance and uptake, helping to achieve rapid eradication of rat and mouse infestations. RatX Bait Discs are weather resistant and perfect for use in outdoor bait boxes.

**DIRECTIONS FOR USE:** When using RatX Bait Discs indoors, outdoors or in sensitive areas, they should always be securely housed within tamper-resistant bait boxes to make them inaccessible to children, pets and non-target wildlife. DO NOT ALLOW PET MICE, GERBILS, HAMSTERS, GUINEA PIGS, OR OTHER PET RODENTS TO COME IN CONTACT WITH THIS PRODUCT.

Place RatX Bait Discs within bait boxes where there are signs of rat or mice activity such as fresh droppings inside or near nests and burrows, runways and rodent feeding places. RatX Bait Discs may be used indoors or outdoors. Place RatX Bait Discs within bait boxes at location points throughout the infested area. It is generally more efficient to use a larger number of small bait points compared to a smaller number of large bait points.

**FOR RAT OR MOUSE INFESTATIONS:** Place RatX Bait Discs within bait boxes 10 feet apart, reducing to 5 feet in high infestation areas. Do not move or disturb location points for several days after placing RatX Bait Discs. If no signs of rat or mouse activity are seen near the locations after 7-10 days, move the product to an area of higher rat or mouse activity.

**POST TREATMENT:** When handling, always use rubber gloves. Remove all remains of bait and bait containers after treatment and dispose of safely. Apply household disinfectants or bleach solutions at recommended concentrations and contact time to dead rats or mice, rat or mouse droppings, nests and surrounding area. Clean the area thoroughly with paper towels or a mop. Place dead rats or mice and soiled paper towels in a plastic bag and seal tightly. Place sealed bag into a second plastic bag and seal tightly. Dispose of bags into a covered trash can that is routinely emptied. Dispose of gloves when finished and thoroughly wash hands with soap and water.

**STORAGE AND DISPOSAL:** Store only in original container in a cool, dry place inaccessible to children and pets. Do not reuse empty container. Offer for recycling if available or discard in trash.

**FIRST AID:** If swallowed, rinse mouth thoroughly. Drink plenty of water. Do not induce vomiting.

This product is exempt from registration under the Federal EPA under Section 25(b) of FIFRA, and as such, is not registered with the Environmental Protection Agency. ConSeal International, Inc. represents that this product and its ingredients qualify for exemption from registration under FIFRA.



692.58

27.267



- ✓ **Formulated For Indoor & Outdoor Use**
- ✓ **Naturally Derived\* Rat & Mouse Control**
- ✓ **Safe for Use Around Livestock & Pets When Used as Directed**

PATENTED & OTHER PATENTS PENDING

# RatX™ BAIT DISCS



RatX Bait Discs™ are created from a unique patented blend of food-grade ingredients to increase performance and palatability. RatX Bait Discs are a novel approach to a safe and effective means to rid an area of rats and mice, and the problems associated therein when used as directed. Both factors aid rat and mouse acceptance and uptake, helping to achieve rapid eradication of rat and mouse infestations. RatX Bait Discs are weather resistant and perfect for use in outdoor bait boxes.

- ✓ **Formulated For Indoor & Outdoor Use**
- ✓ **Naturally Derived\* Rat & Mouse Control**
- ✓ **Safe for Use Around Livestock & Pets When Used as Directed**

### SUGGESTED BAIT LOCATIONS FOR THE EFFECTIVE CONTROL OF RATS & MICE:

- ✓ **Around Ponds & Water Features**
- ✓ **Holes Under a Patio and in Lawns**
- ✓ **Access Points To Buildings or Under Garden Structures**
- ✓ **Near Livestock & Poultry Housing**



**DIRECTIONS FOR USE:** When using RatX Bait Discs indoors, outdoors or in sensitive areas, they should always be securely housed within tamper-resistant bait boxes to make them inaccessible to children, pets and non-target wildlife. DO NOT ALLOW PET MICE, GERBILS, HAMSTERS, GUINEA PIGS, OR OTHER PET RODENTS TO COME IN CONTACT WITH THIS PRODUCT.

Place RatX Bait Discs within bait boxes where there are signs of rat or mice activity such as fresh droppings inside or near nests and burrows, runways and rodent feeding places. RatX Bait Discs may be used indoors or outdoors. Place RatX Bait Discs within bait boxes at location points throughout the infested area. It is generally more efficient to use a larger number of small bait points compared to a smaller number of large bait points.

**FOR RAT OR MOUSE INFESTATIONS:** Place RatX Bait Discs within bait boxes 10 feet apart, reducing to 5 feet in high infestation areas. Do not move or disturb location points for several days after placing RatX Bait Discs. If no signs of rat or mouse activity are seen near the locations after 7-10 days, move the product to an area of higher rat or mouse activity.

**POST TREATMENT:** When handling, always use rubber gloves. Remove all remains of bait and bait containers after treatment and dispose of safely. Apply household disinfectants or bleach solutions at recommended concentrations and contact time to dead rats or mice, rat or mouse droppings, nests and surrounding area. Clean the area thoroughly with paper towels or a mop. Place dead rats or mice and soiled paper towels in a plastic bag and seal tightly. Place sealed bag into a second plastic bag and seal tightly. Dispose of bags into a covered trash can that is routinely emptied. Dispose of gloves when finished and thoroughly wash hands with soap and water.

**STORAGE AND DISPOSAL:** Store only in original container in a cool, dry place inaccessible to children and pets. Do not reuse empty container. Offer for recycling if available or discard in trash.

**FIRST AID:** If swallowed, rinse mouth thoroughly. Drink plenty of water. Do not induce vomiting.

This product is exempt from registration under the Federal EPA under Section 25(b) of FIFRA, and as such, is not registered with the Environmental Protection Agency. ConSeal International, Inc. represents that this product and its ingredients qualify for exemption from registration under FIFRA.

Manufactured by:  
ConSeal International, Inc.  
90 Kerry Place, Suite 2  
Norwood, MA 02062

Distributed by:  
EcoClear Products, Inc.  
5581 Broadcast Court  
Sarasota, FL 34240

Customer Service:  
888-511-7289  
REORDER #: 620118-8#



## FOR THE EFFECTIVE CONTROL OF RATS & MICE

KEEP OUT OF REACH OF CHILDREN  
**CAUTION**

Net Weight: 8 lb. / 3.6 kg

**PERFECT FOR BOTH  
PROFESSIONAL & DIY USE**

<b>ACTIVE INGREDIENTS:</b>	
*Corn gluten meal .....	42.0%
*Sodium chloride .....	3.0%
*Citric acid .....	2.0%
*Putrescent whole egg solids .....	1.5%
*Soybean oil .....	1.0%
<b>INERT INGREDIENTS:</b>	
*Corn cob, *Cellulose, Paraffin wax, *Fish oil, *Calcium carbonate, *Coffee grounds, *Sorbitol .....	50.5%
TOTAL .....	100.0%

202.95

7.990



EP1905A  
DATA MATRIX