

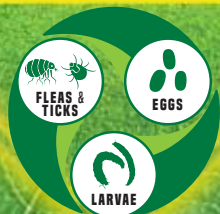
Flick!

NATURAL FLEA & TICK FOR PETS

Covers up to 5,000 sq ft



NATURAL DEFENSE
KILLS BY CONTACT GUARANTEED



MAX STRENGTH FLEA & TICK YARD SPRAY

SAFE FOR USE AROUND DOGS & CATS
CONTAINS NO PYRETHRIN, PERMETHRIN

KILLS FLEAS, TICKS AND MOSQUITOS

| ACTIVE INGREDIENTS | |
|---|---------|
| CLOVE OIL..... | 0.26% |
| LEMONGRASS OIL..... | 2.29% |
| CEDARWOOD OIL..... | 0.20% |
| CINNAMON OIL..... | 0.27% |
| SODIUM LAURYL SULFATE..... | 2.50% |
| OTHER INGREDIENTS | |
| WATER, ISOPROPYL ALCOHOL, GLYCERIN..... | 94.48% |
| TOTAL..... | 100.00% |

KEEP OUT OF REACH OF CHILDREN
CAUTION See back panel for additional precautionary statements.

32 FL. OZ (946 ML)



MAX STRENGTH FLEA & TICK YARD SPRAY

READ ENTIRE LABEL BEFORE EACH USE

KILLS FLEAS, FLEA EGGS, FLEA LARVAE, TICKS, AND MOSQUITOES BY CONTACT, WITH FRESH NATURAL SCENT

DIRECTIONS FOR USE: OUTSIDE AROUND PERIMETER OF HOME, ON LAWNS, LANDSCAPING & BACKYARD AREAS WHERE PETS PLAY

1. SHAKE WELL BEFORE EACH USE
2. Connect a garden hose to the nozzle, tighten and check to ensure both the front and back dial on the nozzle are in the vertical "OFF" position.
3. Turn the water faucet on and extend the hose to the farthest area that will be treated and work back towards the faucet.
4. To begin, aim the nozzle toward the treatment area, turn the back dial counter clockwise (to the left) to start the flow of water. Then turn the front dial counter clockwise (to the left) to start the flow of mixed product. Water will automatically begin mixing with the product.
5. To STOP spraying mixed product, turn the front dial clockwise (to the right) to the vertical "OFF" position.
6. To STOP the flow of water, turn the back dial clockwise (to the right) to the vertical "OFF" position.

For the best results, before using, clear debris away from the foundation of your home and cut back overgrown vegetation. Apply in early morning or late afternoon to avoid any leaf burning.

KEEP OUT OF REACH OF CHILDREN. PRECAUTIONARY STATEMENTS: HAZARDS TO HUMANS AND DOMESTIC ANIMALS

HUMANS: Causes moderate eye irritation. Wash hands thoroughly with soap and water after handling. Prolonged or frequent repeated skin contact may cause allergic reaction in some individuals. **DOMESTIC ANIMALS:** Product intended for use on lawn. Not to be used on pets. Do not apply product into eyes, mouth, or nose of animals. Do not use on (or cause exposure to) puppies under 12 weeks old. **FIRST AID - IF IN EYES:** Hold eye open and rinse slowly and gently with water for 15-20 minutes. Remove contact lenses, if present, after the first 5 minutes, then continue rinsing eye. Call a poison control center or doctor for treatment advice. **HOTLINE NUMBER -** Have the product container or label with you when calling a poison control center or doctor or going for treatment. You may also contact non-emergency line 1(855) 541-7387.

STORAGE AND DISPOSAL - Store only in original container in a cool, dry area inaccessible to children and pets. Place in trash or offer for recycling if available. **Naturel Promise** represents that this product qualifies for exemption from registration under the Federal Insecticide, Fungicide, and Rodenticide Act (FIFRA). This product has not been registered with the United States Environmental Protection Agency. **Naturel Promise** is committed to providing high quality products. If you have questions or comments about this product, please write: Consumer Response, P.O. Box 33 Troy, MO 63379.



MADE IN U.S.A.

PET FRIENDLY. CRUELTY FREE.
NATUREL PROMISE
PO BOX 33
TROY, MO 63379
1(855) 541-7387
NATURELPROMISE.COM