

General Pest (Ants, Cockroaches, Firebrats, Silverfish, Spiders, Mites)

Treatment: Treat attics, crawl spaces, trash closets, utility closets, behind baseboards, around the perimeter of dropped ceilings, in hollow furniture legs; under and behind bedding, appliances and vending machines; in wall voids and voids under and behind cabinets, sinks and tubs; in drawer wells, garbage chutes, pipe chases, weep holes in brick or siding, elevator pits, around drains, around electrical conduits and in cracks and crevices where insects may harbor. Focus application in areas where insects or their signs are seen.

Application tips for certain use sites follow:

1. In attics, be sure to get dust near the eaves and vent pipes where insects often first enter, as well as around any pipes or potential access points between the attic and the main structure.
2. When treating cabinetry areas, if there is no gap between the lower cabinets and the kickplate, then small holes can be drilled to access the voids. Escutcheon plates around pipes can also be pulled back to allow access to voids.
3. The bottom drawers in kitchen and bathroom cabinets can be removed and dust applied into drawer wells. No dust should be left exposed when drawers are replaced.
4. Electrical switch plate covers can be removed to allow access to voids, but dust shouldn't be applied directly in electrical boxes.
5. If there are cracks between baseboards, cabinets, doorframes, hinges, counters or trim, and walls, these cracks can be lightly dusted with product. If practical, these areas can be sealed once insect problems have been eliminated, to help prevent future problems.
6. Insects need moisture, so kitchen and bath areas and areas immediately surrounding them, and any other damp areas should be carefully inspected and treated if necessary.

Storage and Disposal

Do not contaminate water, food or feed by storage or disposal.

Storage: Store in a dry place. Do not store where children or animals may gain access.

Disposal: If Empty: Non-refillable container. Do not reuse this container. Place in trash or offer for recycling if available. **If Partly Filled:** Call your local solid waste agency or 1-800-CLEANUP which is managed as a public-private partnership.

Warranty Limitations and Disclaimer

Seller makes no warranty expressed or implied, concerning the use of this product other than as indicated on the label. Buyer accepts this material subject to these terms, and assumes all risk of usage and handling except when used or handled in accordance with this label. There are no expressed or implied warranties of merchantability or fitness for any particular purpose, except as specifically stated herein. To the extent consistent with applicable law, the manufacturer shall not be liable for any consequential damages based on the use of the product.

EPA Reg. No.: 73079-12

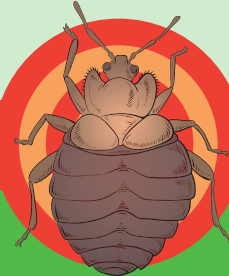
EPA Est. No.: 73079-MO-1

Manufactured by:
Maggie's Farm Ltd
1257 Bedford Ave
Kansas City, MO 64116
Call or Text: (816) 379-5387
www.maggiesfarmproducts.com

© 2017 Maggie's Farm and Green Zone are trademarks of Maggie's Farm Ltd. Green Zone is not a third party certification. V0716060116



BED BUG KILLER



**Provides Fast Control
Kills Pyrethroid-Resistant Bed Bugs
Lasts Up to Ten Years When Undisturbed**

Kills: Bed Bugs, Ants, Cockroaches, Firebrats, Silverfish, Spiders, Mites, Lice, Fleas, Ticks, and Pantry and Fabric/Clothes Beetles and Moths

Net Contents: 3 oz

Active Ingredient:	
Silicon Dioxide as Amorphous Silica.....	92.1%
Other Ingredients.....	7.9%
Total:	100.0%



**KEEP OUT OF REACH OF CHILDREN
CAUTION**



Simply Effective BED BUG KILLER

PRECAUTIONARY STATEMENTS

Hazards to Humans and Domestic Animals: CAUTION: Causes moderate eye irritation. Avoid contact with eyes or clothing. Wash thoroughly with soap and water after handling and before eating, drinking, chewing gum, using tobacco or using the toilet.

First Aid

If in Eyes: Hold eye open and rinse slowly and gently with water for 15-20 minutes. Remove contact lenses, if present, after the first five minutes, then continue rinsing eye. Call a poison control center or doctor for treatment advice.

DIRECTIONS FOR USE

It is a violation of Federal law to use this product in a manner inconsistent with its labeling.

Application Directions

Use Sites: In and around residential, multi-family, agricultural, and recreational buildings, garages, transport vehicles, and other manmade structures.

General Information: Maggie's Farm™ Simply Effective™ Bed Bug Killer is a desiccant dust that has no odor and will not stain. When pests contact Maggie's Farm™ Simply Effective™ Bed Bug Killer, the product clings to their exoskeleton and absorbs the waxy coating, causing death from dehydration.

Application Rates and Methods: Apply at a rate of 2 ounces per 100 square feet. In attics and crawlspaces, apply at a rate of 1 lb per 1000 square feet. Use the puffer bottle to apply a light, visible film. A craft or paint brush is useful for pushing dust into cracks and crevices, and into tufts and folds of mattresses and cushions.

Bed Bug Treatment: Remove bedding and take the bed apart. Treat the interior framework, joints and cracks in the bed frame. Treat the mattress and box spring, paying particular attention to tufts, folds and edges, and the interior framework of the box spring. Remove wall-mounted head boards and treat the back side. Treat picture frames, moldings, hollow furniture legs, cracks and crevices, along baseboards, and any areas with visible signs of infestation, including rugs and carpet. Treat upholstered furniture by removing or lifting (if possible) the cushions and treating the undersurface. Treat the interior framework, cracks and joints of the furniture, and the folds, tufts and edges of cushions and other upholstered areas. Do not treat toys and stuffed animals with product. Treat wall voids by removing electrical switch plate covers to allow access, but don't apply dust directly in electrical boxes. Apply about ¼ oz of dust to each accessible void.

Flea, Lice and Tick Treatment: Treat kennels, pet bedding/rest areas, floor and floor coverings, cracks behind molding and baseboards and other areas where pests may harbor.

Pantry and Fabric/Clothes Beetles and Moths: Treat cracks, crevices and along the edges of cupboards, closets, pantries, shelving units and storage. Treat voids beneath drawer units by removing the lower drawers and treating the well. Treat the voids beneath shelving units or cabinets by removing the kickplate or drilling small access holes in the kickplate. Treat under rugs and along the edges of carpets and baseboards and other infested areas to control carpet beetles.