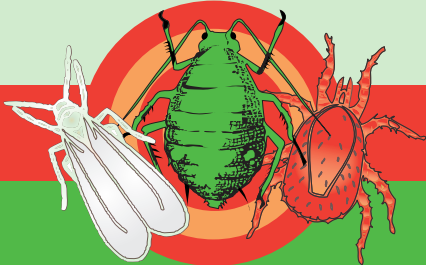




3-IN-1 GARDEN SPRAY

FOR ORGANIC GARDENING



Lethal to Garden Insects, Mites & Diseases

Kills & Repels Aphids, Caterpillars, Mites & Other Listed Pests

Prevents & Controls Black Spot, Powdery Mildew, Blight & Rust

Use on Flowers, Vegetables, Houseplants & Other Edible & Ornamental Plants

Active Ingredients:

- Thyme oil.....0.28%
- Geraniol.....0.14%
- Cinnamon oil.....0.05%
- Peppermint oil.....0.05%

Inert Ingredients ...99.48%

Total.....100.00%

*Water, Polyglyceryl oleate,
Butyl stearate, Isopropyl myristate



Keep Out Of Reach Of Children

CAUTION

Net Contents: 24 fl oz

OPEN FOR DIRECTIONS
AND PRECAUTIONS



Simply Effective™

3-IN-1 GARDEN SPRAY

FOR ORGANIC GARDENING

Maggie's Farm 3-in-1 Garden Spray is a ready-to-use product that provides three garden solutions in one: insecticide, miticide and fungicide. It kills and repels the most common garden pests and controls fungal diseases. Using natural plant oils as the active ingredients in a water-based formula, it leaves no harmful residues.

Bugs and diseases are tough, but solutions should be simple and effective. Maggie's Farm is committed to offering products that are Simply Effective. It's as simple as that!

Product Overview

Kills & Repels: Ants, aphids, beetles (leaf-feeding), boxelder bugs, caterpillars, crickets, lace bugs, leafhoppers, mealy bugs, mites, scale crawlers, stink bugs, thrips, whiteflies and other garden pests.

Fungal Diseases Controlled: Powdery mildew, black spot, leaf spot, rust, and blight.

Where To Use: For home gardening use on roses, flowers, houseplants, shrubs, vegetables, herbs and other edible/consumable and ornamental plants.

Questions/Comments: Visit our website at
www.maggiesfarmproducts.com.
Call or Text: (816) 379-5387

Read Entire Label And Use Accordingly.

Manufactured by:
Maggie's Farm Ltd
1257 Bedford Ave
Kansas City, MO 64116

**SHAKE
WELL!**



8 11249 02033 5

DIRECTIONS FOR USE

Always read label directions and precautions prior to use.

Shake well before use and periodically during use.

Ready-to-use. Do not dilute. This product can be used indoors and outdoors.

Spray Nozzle Adjustments: The spray nozzle has a wide mist setting and a narrow straight stream setting. The mist setting is best when spraying a larger area, for spraying leaves on plants and for covering a number of insects from fairly close range. The straight stream setting is best for spraying from a distance where the mist setting will not reach the target pest or location.

Insect/Mite Treatment: This product is most effective when used at the first sighting of insects and insect damage. Apply in the early morning or in the evening, not in the heat of the day. Thoroughly spray all areas of the plant, including the underside of leaves. Spray until the solution runs off the tips of the leaves. Contact as many pests as possible. Apply every 5 to 7 days when insects are present. May be used up to the day of harvest. Repeat as necessary.

Fungal Treatment: For best results, apply as a protective spray early before diseases are noticed. Apply in the early morning or in the evening, not in the heat of the day. Thoroughly spray all areas of the plant, including the underside of leaves. Spray until the solution runs off the tips of the leaves. Apply every 7 to 10 days or after rain. May be used up to the day of harvest. Repeat as necessary.

Precautions

- We recommend good safety practices when using any pesticide, such as avoiding contact with eyes and skin and avoiding directly breathing spray mist. If product gets in eyes, flush with water for at least 15 minutes. If on skin, wash with soap and water. For any persistent irritation, or if more than an incidental amount is swallowed, seek medical attention. If seeking medical treatment, have this label with you.
- Keep out of lakes, streams and ponds.
- We've tested the product on a variety of surfaces without problems, but it is possible that the plant oils could damage some plastics or finishes or could stain some fabrics, so test treat a small area first. If clean up is needed, use water and dish soap.
- We've tested the product on various types of plants without causing any burning or browning, but test treat a small area first to be certain if you're concerned about plant sensitivity, and be careful not to over-apply. Apply in the evening to minimize risk of burning or browning on sensitive plants.

Storage & Disposal: Store in a cool, dry area out of reach of children and upright in the original, closed container. Don't reuse the container. Dispose of in trash or offer for recycling if available.

Limitations of Liability: Maggie's Farm Ltd makes no warranties of merchantability or fitness for any purpose except expressed on this label. Buyer assumes all responsibility for safety and use not in accordance with label directions and precautions.

Maggie's Farm Ltd represents that this product is a minimum risk pesticide and is exempt from registration under EPA FIFRA 25(b). This product is not EPA registered.