

RESEALABLE

58300-18002_VoleX_20180621_16_58300_.pdf



TEAR TO OPEN/ PRESS TO RESEAL

PATENTED & OTHER PATENTS PENDING

VoleX™

FOR THE EFFECTIVE CONTROL OF VOLES

- ✓ **Formulated for Year-Round Use**
- ✓ **Proprietary Attractant Bait Complex**
- ✓ **Biodegradable**
- ✓ **Safe for Use Around Livestock & Pets***

*WHEN USED AS DIRECTED

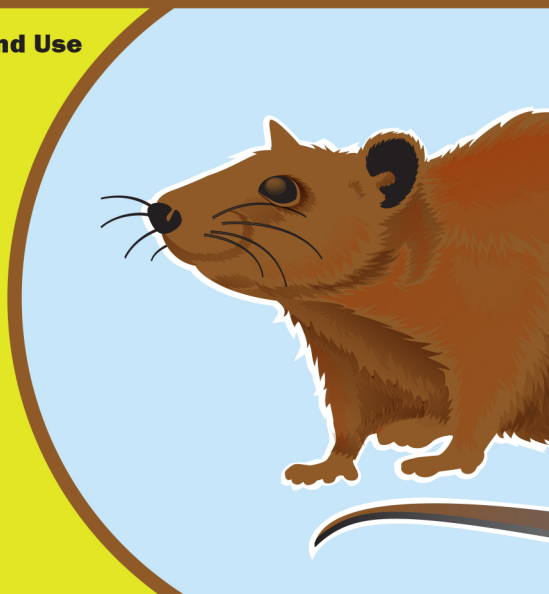
ACTIVE INGREDIENTS:

Corn gluten meal	22.0 %
Sesame	9.0 %
Sodium chloride	3.0 %
Citric acid	2.0 %

INERT INGREDIENTS:

Cellulose, Millet seed, Wheat germ oil, Paraffin wax	64.0 %
Total	100 %

**PERFECT FOR BOTH
PROFESSIONAL AND DIY USE**



**KEEP OUT OF REACH OF CHILDREN
CAUTION**

Net Weight: 8 oz. / 227 gm.



FOR THE EFFECTIVE CONTROL OF VOLES

PATENTED & OTHER PATENTS PENDING



A vole is a small rodent that thrives on small plants and plant bulbs. Voles will consume the succulent root systems of plants and burrow under plants or ground cover to eat away the root system until the plant is dead. Their excellent burrowing and tunneling skills give them access to garden areas without clear or early warning. Voles will also gnaw small trees and ground cover. To properly apply VoleX it is important to pinpoint the location of your voles. Voles spend their lives protected by ground cover or underground so the best way to locate them is to identify the damage they are causing.

SIGNS OF VOLE DAMAGE INCLUDE:

- Surface runways: Irregular paths of disrupted grass or soil, about 1-2" in wide.
- Burrow entrances: Clean round holes about 1.5 inches in diameter, often in line with surface runways
- Disruption of fruit tree production: Indicative of root damage caused by girdling
- Girdled bark/stems: Irregular gnaw marks about 1/8" wide, 3/8" long and 1/16" deep along the very bottom of trees or plants.

DIRECTIONS FOR USE: ALWAYS USE A DEDICATED MEASURING DEVICE. DO NOT USE KITCHEN UTENSILS. Protect bait points from non-target animals and children. Do not allow pet mice, gerbils, hamsters, guinea pigs or other pet rodents to come in contact with this product.

FOR OUTDOOR USE ONLY: Place bait points where there are signs of vole activity.

APPLICATION: Locate vole runways, make 1" holes every 8-10 feet and place recommended amount of VoleX directly into locations or wrap in clinging packaging film and push down the burrow with a long stick or similar item and cover with soil. Also apply to the end of each runway when possible.

Protect VoleX bait points from water damage as the baits should be kept dry. Inspect bait points frequently and replace any eaten bait or baits that have become wet and re-site in a dry location. VoleX must be placed directly into vole holes, burrows, and tunnels in nesting or feeding areas. Replenish pellets or packets as outlined above until there are either no more takes or no vole activity is seen for 2 weeks.

RECOMMENDED USAGE AMOUNT: 1/2 - 1/3 oz. or 10 - 15 gm. or 2/3 - 1 tsp. per hole or introduction.

SOUTHERN AND MIDWESTERN REGIONS: Apply VoleX making two (2) applications, 2 weeks apart, to tunnels and subterranean runways in damaged areas. Repeat in 30 days as required.

NORTHERN SNOWFALL REGIONS: First application should be made when no irrigation is present as over-irrigating can destroy the VoleX pellets. Apply the first of two applications of VoleX to infested areas during the summer months, September through November, making two (2) applications, two weeks apart, to tunnels and subterranean runways in damaged areas. Repeat in 30 days as required. The second application should be applied prior to the first snowfall and repeat the application in the spring, immediately after the first melting snows allows.

POST TREATMENT: When handling, always use rubber gloves. Remove all remains of bait and bait containers after treatment and dispose of safely. Apply household disinfectants or bleach solutions at recommended concentrations and contact time to dead voles, vole droppings, nests and surrounding area. Place dead voles and soiled paper towels in a plastic bag and seal tightly. Place sealed bag into a second plastic bag and seal tightly. Dispose of bags into a covered trash can that is routinely emptied. Dispose of gloves when finished and thoroughly wash hands with soap and water.

PRECAUTIONS: Wash hands with soap and water after handling. Avoid contact with eyes and skin. If swallowed, dilute with water, do not induce vomiting. Never give anything to an unconscious person. Product is not considered harmful to humans. Keep away from food and foodstuff.

STORAGE AND DISPOSAL: Store only in original container in a cool, dry place inaccessible to children and pets. Do not reuse empty containers. Offer for recycling if available or discard in trash.

This product is exempt from registration under the Federal EPA under section 25(b) of FIFRA, and as such, is not registered with the Environmental Protection Agency. ConSeal International, Inc. represents that this product and its ingredients qualify for exemption from registration.



- ✓ **Formulated for Year-Round Use**
- ✓ **Proprietary Attractant Bait Complex**
- ✓ **Biodegradable**
- ✓ **Safe for Use Around Livestock & Pets***

*WHEN USED AS DIRECTED

SUGGESTED BAIT LOCATIONS FOR THE EFFECTIVE CONTROL OF VOLES:

- ✓ **Lawns & Gardens**
- ✓ **Golf Courses**
- ✓ **Under a Greenhouse**
- ✓ **Abandoned & Active Vole Tunnels**
- ✓ **Near Livestock & Poultry Housing**

Manufactured by:
ConSeal International, Inc.
90 Kerry Place, Suite 2
Norwood, MA 02062

Distributed by:
EcoClear Products, Inc.
5581 Broadcraft Court
Sarasota, FL 34240

Customer Service: 888-511-7289

REORDER #: 620205

