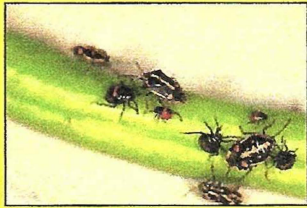


# EX-ICUTE™ / RAPID-O™



## Active Ingredients

Clove Oil .....	6%
Sesame Oil.....	5%
Rosemary Oil.....	3%
Soybean Oil.....	37%
<b>Sub Total .....</b>	<b>51%</b>
<b>Inert Ingredients</b>	
R.O. Water.....	49%
<b>Total.....</b>	<b>100%</b>

This product is exempt from registration with the federal EPA under section 225(b) of FIFRA.

**WA# 998920-18001**

Weight per gallon 8.2 lbs  
2 1/2 Gallon 2x2 1/2 Gallon  
275 Gallon Bulk

## DIRECTIONS FOR USE

Mix as directed below Ex-icute/Rapid-O. Apply enough water to cover the entire infested areas.

**FINAL MIX VOLUME: Concentrate/ Fl oz. (mL)**

1 Gallon.....	2 oz (60ml)
5 Gallon.....	20 oz (600ml, 1.25 pints)
15 Gallon.....	50 oz (1500ml, 3.12 pints)
50 Gallon.....	200 oz (6000ml, 6.25 quarts)

Apply no more than once in a five day period. Repeat application as needed. Coverage is essential to establish control. The use of a spreader/sticker may increase contact and efficacy of treatment.

## CAUTION: AVOID CONTACT WITH EYES, SKIN, OR CLOTHING.

In case of contact, immediately flush eyes or skin with water for ten minutes. Seek medical attention if irritation persists. If swallowed, immediately seek medical attention. Personal protective equipment: Applicators and other handlers of this product should wear long sleeve shirt and pants, shoes plus socks, gloves, and protective eyewear.

## KEEP OUT OF REACH OF CHILDREN

### FIRST AID:

**Eye Contact:** Flush immediately with cold clean water for at least 15 minutes, contact physician immediately.

**Skin Contact:** Thoroughly wash the affected area with soap and warm water. Flush with large quantities of water. If irritation persists call a physician.

**Inhalation:** Remove individual to fresh air.

Administer water or milk to dilute. Contact a physician or local poison control center.

If **swallowed:** Immediately seek medical attention.



**WSDA LISTED**  
Rev 6: 05-8-2018  
Product of the USA

**GUARANTEED BY A Z ENTERPRISES INC.**

**DBA Organic AG Products**

2367 Brant St., Arroyo Grande, CA 93420

Phone: (877) 964-2885

Fax: (805) 474-8531

OrganicAGProducts.com

## PRODUCT INFORMATION

Aid in the control of sucking and chewing insects and some fungal diseases such as powdery mildew, rust, and Sigatoka.

## VEGETABLES

(outdoor, greenhouse, home gardens):

Apply 2-4 oz/gal of water to control insects such as: Army Worms, Aphids, Thrips, Fruit Flies, Leaf Hoppers, Leafminer, Mealy Bugs, Scale (Red and Brown Citrus), Snails, Mites, Pepper Weevil, Potato Beetle, Stable and Deer Flies, Whitefly, Mosquitoes, Flies, Gnats, No-See-Ums, Chiggers, Ticks, Silverfish, Crickets, Moths, Cinch Bugs, Ants, Palmetto Bugs, and Caterpillars.

## HONEY BEE TREATMENT

For Varona Mites control, apply by wetting thoroughly Blue Paper Towels with EX-ICUTE water solution for Bees to walk on.

## FOR ANY & ALL CROPS, THE PESTS CONTROLLED INCLUDE BUT ARE NOT LIMITED TO THE PESTS LISTED:

### BANANAS

Sigatoka Negra (Black Sigatoka), Bacteriosis Acaros Negros, Mosca Blanca (White Flies)

### RICE

Sogata (Flying bug on rice), Acaros, Caracol (Snail), Pyricularia oryzae

### Grapes & Citrus

Sharpshooter, mites, psyllids, aphids and powdery mildew, mealy bug & scale

### COFFEE/PALM OIL/ COCOA

Apply 1 gal/100 gal water to the foliage to aid in the control of Insects, Rust & Flies, Berry borer, mites

### NUTS\*\*

(Almond, Pistachio, Walnut, Pecan, Hazelnut & Macadamia) Ants (Orchard, Fire), Aphid, Leaffooted Plant Bug, Navel Orangeworm (NOW), Scales, Shothole Borer, Spider Mites, Stink Bugs and Fungal Diseases.

### AVOCADO

Bagrada bug, Borer Beetles, Lace Bug, Spider Mites, Scales (soft & armored), Thrips, White Fly, and Fungal Diseases

### BERRIES\*\*

(Strawberry, Blueberry, Cane Berries) Lygus bug, Spider Mites, Spotted Wing Drosophila (SWD), Thrips, Tomato Bug, White Fly, and Fungal Diseases

### TREE CROPS\*\*

(Apple, Cherry, Fig, Stone Fruits, Pomegranate) Aphids, Borers, Leafhoppers, Scales, Spider Mites, Spotted Wing Drosophila (SWD), Thrips and Fungal Diseases.

### ADDITIONAL CROP GROUPS COVERED:\*\*

Greenhouse Crops, Herbs, Ornamentals, Field Crops, Miscellaneous Crops such as Taro & Dragon Fruit

\*\*Including But Not Limited To

## CROP

Alfalfa Hay/Forages

Put on at cutting time on the swather at a rate of 1oz.-3oz. per ton of hay. To improve hay quality against molds and insects. Improves rain damage and insect damage. NO feeding restrictions.

Applying EX-ICUTE to Raw Vegetables in Storage: by thermo-fogging to control insects, fungus, bacteria and sprouts.

EX-ICUTE at a rate of one gallon per 10,000 cwt for thermal fogging for 8 to 10 hrs vaporizing. Do not remain in treated areas after application. Open and thoroughly ventilate treated areas before reoccupying.

## For Control of Sprouting on Garlic, Onions and Potatoes

Initial Treatment: 2 - 5 quarts/ 1000cwt. (66.6-160 oz. liquid / 1000 cwt.; 5.2-10.5 lbs./1000 cwt.) Every 2-3 Weeks: 1.5 pints-3 pints/ 1000cwt. (24.3-47.4 oz. liquid / 1000 cwt.; 1.9-3.7 lbs./1000 cwt.)

APPLICATION METHOD --- Thermal Aerosol

## HOW EX-ICUTE/RAPID-O WORKS:

The main mode of action of this product is its ability to dissolve cell wall proteins of pests.

## EX-ICUTE/Rapid-O

Provides growers with a different mode of action to delay insect resistant.

## Precaution Statements.

Always check compatibility by spraying a small number of plants before initial application.

## CONDITIONS OF SALE

Seller warrants that the product conforms to its natural organic description and is reasonably fit for the purpose on this label when used in accordance with directions under normal conditions of use; but neither this warranty or any other warranty of merchantability of fitness for a particular purpose, expressed or implied, extends to the use of this product contrary to label instructions not reasonably foreseeable to the seller; and buyer assumes the risk of any such use.

**STORE IN COOL DRY AREA. PRODUCT LIFE IS NORMALLY FOUR TO FIVE YEARS. KEEP OUT OF DIRECT SUNLIGHT.**

**DO NOT REUSE EMPTY CONTAINERS. DISPOSE OF PER LOCAL, STATE AND FEDERAL REGULATIONS.**

## CONTROLS

Bagrada Bug (Bagrada hilaris) - stink bug & Lygus  
Apply at rate of 2 oz/gal of concentrate or 1 gal/acre in 30 gallons of water

For maintaining of Insect Control, apply at 1/2 oz/gal in 30 gallons of water

Mites on Strawberries  
Apply at rate of 2 oz/gal of water  
1/2 gal/A in 30 gallons of water

Thrips on Peppers  
Apply at rate of 4 oz/gal of water  
or 1 gal/A in 30 gallons of water

Lygus & Whitefly - Strawberries  
Apply at rate of 2 oz/gal  
or 1/2 gal/A in 30 gallons of water

Aphids  
Apply 2 oz/gal of water  
or 1/2 gal/A in 30 gal of water

**SHAKE WELL BEFORE USING**

**FOR AGRICULTURAL USE ONLY.**

