



ATHENA

SPIDER MITE CONTROL

LIQUID CONCENTRATE

Pure Acaricide

Plant oil for the control of spider mites

Spider Mite Control kills on contact. Contains oils produced by cold-pressed extraction of naturally grown Geranium, Peppermint, Cottonseed, and Rosemary. Under warm conditions, Spider Mite Control will biodegrade leaving minimal residues.

SUSTAINABLE

NON-BURNING

USE ANYTIME

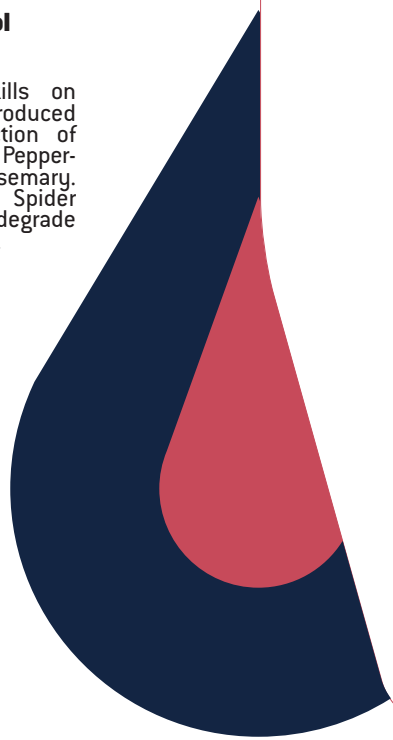
Makes 50 gallons

ACTIVE INGREDIENTS:	% by WT
Geraniol	20.00%
Peppermint oil	1.00%
Cottonseed oil	0.10%
Rosemary oil	0.01%
OTHER INGREDIENT:*	78.89%
TOTAL:	100.00%

*Canola oil

CAUTION KEEP OUT OF REACH OF CHILDREN
See Back Panel for Precautionary Statements

NET CONTENTS: 64 fl oz (1.89 L)



64oz



SPIDER MITE CONTROL

Pure Acaricide

- Effective against spider mites on food or non-food crops, including turf and ornamental plantings.
- Tested on *Tetranychus Urticae*, which attacks beans, corn, peppers, potatoes, strawberries, tomatoes, and ornamentals such as roses.
- Effective as insect repellent, broadly recommended, and used in various fields, such as forestry, horticulture, lawn care, and organic farming.

Mix Rate: The mix rate for Spider Mite Control concentrate is 1.28 fl oz (37.9 ml) per one gallon of water that may only be used as a foliar spray. SHAKE OR MIX THOROUGHLY! Reverse Osmosis water is recommended.

Avoid using during peak sunlight or intense lighting, as some plants are sensitive to oil based products. The buyer undertakes all accountability for correct usage of this product.

Plant Type	Mix Rates	Dilution Rates	Foliar Spray	Time to use
food or non-food crops, lawns, or ornamentals	1.28 fl oz (37.9 ml)/1 gal 1 gal (3.79 L)/100 gal	1:100	3.8 fl oz (111.5 ml)/1,000ft ² 1.3 gal (4.85 L)/Acre 3.17 gal (12 L)/ha	During time of spider mite occurrence

FIRST AID

IF SWALLOWED • Call a poison control center or doctor immediately for treatment advice. • Have person sip a glass of water if able to swallow. • Do not induce vomiting unless told to do so by a poison control center or doctor. • Do not give anything by mouth to an unconscious person. **IF INHALED** • Move person to fresh air. • If person is not breathing, call 911 or an ambulance, then give artificial respiration, preferable mouth-to-mouth if possible. • Call a poison control center or doctor for further treatment advice. **IF IN EYES** • Hold eye open and rinse slowly and gently with water for 15-20 minutes. Remove contact lenses, if present, after the first 5 minutes, then continue rinsing eye. • Call a poison control center or doctor for treatment advice. **IF ON SKIN OR CLOTHING** • Take off contaminated clothing. • Rinse skin immediately with plenty of water for 15-20 minutes. • Call a poison control center or doctor for treatment. **HOT LINE NUMBER:** Have the product container or label with you when calling a poison control center or doctor, or going for treatment. For emergency information call the National Pesticides Information Center at 1-800-858-7378, 6:30 AM to 4:30 PM Pacific time (PT), seven days a week. During other times, call the poison control center 1-800-222-1222.

STORAGE AND DISPOSAL

STORAGE: Do not contaminate water, food, or feed by storage and disposal. Store in a cool, dry area under lock and key. Post as a pesticide storage area. Always store pesticides in the original container. Store away from food, pet food and feed.

CONTAINER HANDLING: Nonrefillable container. Do not reuse or refill this container. Triple rinse container (or equivalent) promptly after emptying. Triple rinse as follows: Empty the remaining contents into application equipment or a container 1/4 full with water and recap. Shake for 10 seconds. Pour rinsate into application equipment or a mix tank or store rinsate for later use or disposal. Drain for 10 seconds after the flow begins to drip. Repeat this procedure two more times. Then offer for recycling if available, or puncture and dispose of in a sanitary landfill or by incineration. Do not burn unless allowed by state and local ordinances.

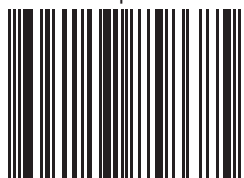
PESTICIDES DISPOSAL: Reuse of this container is prohibited. Please dispose of this recyclable container at a container collection site, which can be found by contacting your municipality for the location nearest you.

ENVIRONMENTAL HAZARDS: For terrestrial uses. Do not apply directly to water, or to areas where surface water is present or to intertidal areas below the mean high water mark. Do not contaminate water when disposing of equipment washwater or rinsate.

The product has not been registered by the United States Environmental Protection Agency. Athena Products Inc represents that this product qualifies for exemption from registration under FIFRA 25(b).
ESL25b07A REV052118

Athena Products Inc
8190 Mission Blvd, Ste B#7
Riverside, CA 92509-2999
Call toll free 1-844-333-1818

www.athenaproducts.com



6 94157 85868 5