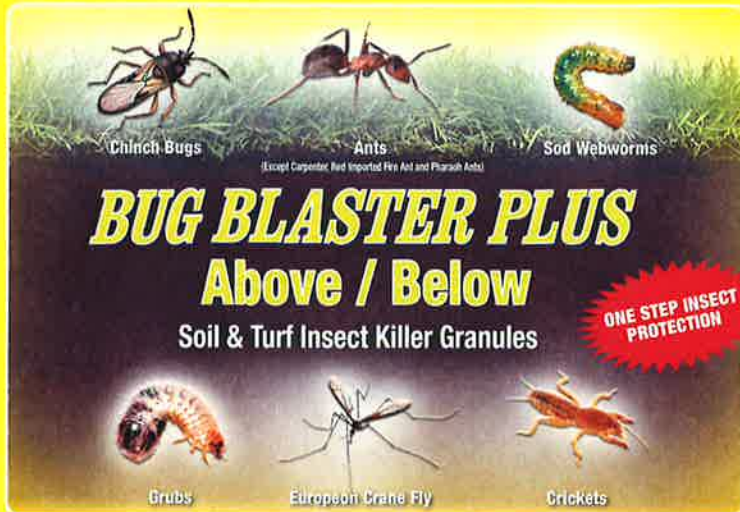


32406 Bug Blaster Plus Above / Below

Hi-Yield®

Bug Blaster Plus Above / Below

Bug Blaster Plus Above / Below



- Protects your lawn from top to bottom against listed insects
- Kills Ants*, Grubs, Mole Crickets, Chinch Bugs and other listed insects
*Except Carpenter, Red Imported Fire Ant and Pharaoh Ants
- Apply anytime between spring throughout summer
- 20 pounds covers up to 5,000 sq. ft.

KEEP OUT OF REACH OF CHILDREN

CAUTION

See Back Panel For Precautionary Statements, Directions For Use And Storage And Disposal.

ACTIVE INGREDIENTS:	
Imidacloprid	0.20%
Lamda-cyhalothrin	0.04%
OTHER INGREDIENTS	99.76%
TOTAL	100.00%

32406-0518-TP



NET WEIGHT 20 LBS. (9.1 KG)

32406

Bug Blaster Plus Above / Below

Hi-Yield®

Bug Blaster Plus Above / Below

FOR USE AROUND:
Buildings and structures for the control of listed pests, including on lawns, around the base of ornamental trees and shrubs, around residential, institutional, public, commercial, agricultural and industrial buildings and on parks, on recreational areas, and on athletic fields.

RESTRICTIONS:

- Not for sale, sale into, distribution and/or use in Nassau, Suffolk, Kings and Queens counties, New York.
- In New York State, this product may not be applied to lawns within 100 ft. of a coastal marsh or stream that drains directly into a coastal marsh.

PRODUCT FACTS
What It Does:
Helps protect your home from invading Ants, except Carpenter, Red Imported Fire Ant and Pharaoh Ants. Also kills Crickets, Chinch Bugs, Armyworms (grass and Yellow-striped), Billbugs, Cutworms, Earthworms, Grubs, Sod webworms, European Crane Flies and other listed insects.

Where to Use:
Outdoors, on Lawns and as a Band Treatment around House Foundation.

KEEP OUT OF REACH OF CHILDREN

CAUTION

FIRST AID

IF IN EYES:

- Hold eye open and rinse slowly and gently with water for 15 to 20 minutes.
- Remove contact lenses, if present, after the first 5 minutes, then continue rinsing eye.
- Call a Poison Control Center or doctor for treatment advice.

HOT LINE NUMBER
Have the product container or label with you when calling a poison control center or doctor, or going for treatment. You may also contact SafetyCall® International for emergency medical treatment at (866) 897-0055.

NOTE TO PHYSICIAN
No specific antidote is available. Treat the patient symptomatically.

PRECAUTIONARY STATEMENTS
HAZARDS TO HUMANS AND DOMESTIC ANIMALS

CAUTION: Causes moderate eye irritation. Avoid contact with eyes or clothing. Wear long sleeved shirt, long pants, shoes and socks.

ENVIRONMENTAL HAZARDS

This product is highly toxic to fish and aquatic invertebrates. This product is highly toxic to bees exposed to direct treatment or residues on blooming crops or weeds. Do not apply this product or allow it to drift to blooming crops or weeds if bees are foraging the treatment area.

Do not apply directly to water, or to areas where surface water is present or to intertidal areas below the mean high water mark. Do not contaminate water when cleaning equipment or washing hands. Runoff may be hazardous to aquatic organisms in water adjacent to treated areas.

This product contains a chemical with properties and characteristics associated with chemicals detected in groundwater. The use of this chemical in areas where such are possible, particularly where the water table is shallow, may result in groundwater contamination.

USE PRECAUTIONS FOR USE
IT IS A VIOLATION OF FEDERAL LAW TO USE THIS PRODUCT IN A MANNER INCONSISTENT WITH ITS LABELING. Apply this product only as specified on the label.

Do not apply this product in a way that will contact any person or pet, either directly or through drift. Keep people and pets out of the area during application. Keep children and pets off treated area until product has been watered in and lawn is dry. Applicators and other handlers who handle this product wear long sleeved shirt, long pants, and shoes with socks.

RESTRICTIONS:
Do not apply more than 4.6 lbs. of this product per 1,000 square feet or 200 lbs. of product (0.4 lbs. of insecticide active ingredient) per acre per year.

INFORMATION

Apply according to specific directions for pests to be treated.

This product can be used on lawns, flower beds, ground covers, ornamental trees and shrubs to control White Grubs (including larvae of Asiatic Garden Beetle, Black Turfgrass Ateletus, Chalcids, Japanese Beetle, May or June Beetle, and Oriental Beetle), Mole Crickets and European Crane Fly Larvae.

Apply this product before grubs, mole crickets or European crane fly larvae hatch and can cause any damage. Contact your County Extension Agent for the best times to apply in your area.

Pests Controlled	When to Apply	Indication of Damage
Grubs	Apply once anytime from May through mid-August.	White grubs cause widespread damage to lawns by feeding on grass roots, causing it to turn yellow, then brown and die.
European crane fly larvae	Apply once, when these insects are present in large numbers, late summer to mid-fall.	European crane fly larvae cause damage by burrowing through the soil, while some species also feed on roots, tunneling through the soil (uproot the grass causing it to dry out, become thin and weedy, turn yellow and eventually die).
Mole Crickets	Apply once anytime from mid-May through mid-June. Florida residents apply once anytime between early April through early May.	Mole crickets cause widespread damage by burrowing through the soil, while some species also feed on roots, tunneling through the soil (uproot the grass causing it to dry out, become thin and weedy, turn yellow and eventually die).

FLOWER BEDS, GROUND COVERS, ORNAMENTAL TREES AND SHRUBS

APPLICATION INSTRUCTIONS
Apply this product at the rate of 1 tablespoon per 10 square feet of planting bed (3/4 cup per 100 square feet of planting bed). Evenly spread granules to the soil over flower beds, ground cover plantings, and ornamental shrub beds and under ornamental trees. Use a hand-held spreader. Rake granules into the soil around plants. Water thoroughly after application.

APPLICATION OF THIS PRODUCT ON ORNAMENTALS
For use around flower beds, ground covers, ornamental trees and shrubs

SITE	PEST	RATE
Flower beds, ground covers, ornamental trees and shrubs	White grub larvae (such as Japanese beetle larvae, Chalcids, Asiatic garden beetle, Oriental beetle)	1 Tbsp. per 10 sq. ft. 3/4 cup per 100 sq. ft. 2-3 lbs. per 1,000 sq. ft.

LAWNS

APPLICATION INSTRUCTIONS

For control, apply prior to egg hatch of the target pests. Allow rainfall or irrigation sufficiently within 24 hours after application to move the active ingredient through the thatch.

Do not make applications when turfgrasses are waterlogged or the soil is saturated with water. Adequate dissipation of the active ingredient cannot be achieved when these conditions exist. The areas to be treated must be able to accept vertical penetration of rainfall or irrigation water. Do not mow tall or lawn areas not if after sufficient irrigation or rainfall has occurred so that uniformity of application will not be affected.

RATES OF THIS PRODUCT FOR GRUB AND SOIL INSECT CONTROL ON TURFGRASS

PEST	USE DIRECTIONS	RATE
Larvae of: European Crane Fly Annual Bluegrass weevil Green June Beetle May or June Beetle Asiatic garden beetle Japanese Beetle Billbug Northern masked chaffer and Southern masked chaffer Black Turfgrass Ateletus Oriental Beetle Cutworm (suppressor), European chaffer	For optimum control of grubs, billbugs, European crane fly and annual bluegrass weevil, make application prior to egg hatch of the target pest.	3.4 - 4.6 lbs. per 1,000 sq. ft.
Chinchbug (suppressor) Mole Crickets	For suppression of chinchbugs, make application prior to hatching of the winter nymphs. For control of mole crickets make application prior to or during the peak egg hatch period. When adults or large nymphs are present and actively tunneling, apply with a removal knapsack.	4.6 lbs. per 1,000 sq. ft.

APPLICATION EQUIPMENT

Adjust spreader to the appropriate setting to deliver the specified rate, based on the directions from the manufacturer. Make sure that the spreader works properly and spreads granules uniformly. Apply to the border and then fill in the center to ensure the entire area is covered completely. To make sure that the product is evenly distributed, walk at a steady pace making parallel passes. Do not use a spreader that applies granules in concentrated or uneven bands. Water thoroughly after application.

Apply early before grubs, mole crickets and European crane fly larvae hatch, irrigate thoroughly within 24 hours of application to form a protective zone in the soil. Do not mow until granules are watered into the soil and grass has dried. Do not apply to water saturated areas. This may decrease product effectiveness. This product can be applied over soil or mulch. Remove black plastic or other weed barrier material prior to application.

SPREADER SETTINGS

Spreader	Rate of product per 1,000 sq. ft.
1.4 lbs.	4.6 lbs.
3 lbs.	4 lbs.
3 1/2 lbs.	4 lbs.
4 lbs.	4 lbs.
4 1/2 lbs.	4 lbs.

STORAGE AND DISPOSAL

Do not contaminate water, food or feed by storage or disposal. **PESTICIDE STORAGE:** Store in a cool, dry area away that is inaccessible to children and pets. Store in original container only. **PESTICIDE DISPOSAL AND CONTAINER HANDLING:** Non-refillable container. Do not reuse or refill this container. If empty, place in trash or other for recycling if available. If partly filled, call your local solid waste agency for disposal instructions. Never place unused product down any drain (including toilet) or into sewer (including sump drain).

LIMITATION OF WARRANTY AND LIABILITY

Read the entire direction for use, conditions of warranties and limitations of liability before using this product. If terms are not acceptable, return the unopened product container at once. By using this product, user or buyer accepts the following **CONDITIONS, DISCLAIMER OF WARRANTIES, and LIMITATIONS OF LIABILITY.**

CONDITIONS: The directions for use of this product are believed to be adequate and must be followed carefully. However, it is impossible to eliminate all risk associated with the use of this product. Crop injury, malformation, or other unintended consequences may result because of such factors as weather conditions, presence of other materials, or the manner of use or application, all of which are beyond the control of VPG. To the extent consistent with applicable law, all such risks shall be assumed by the user or buyer.

DISCLAIMER OF WARRANTIES: To the extent consistent with applicable law, VPG makes no other warranties, express or implied, of merchantability or of fitness for a particular purpose or otherwise, that extend beyond the statements made on this label. No agent of VPG is authorized to make any warranties beyond those contained herein or to modify the warranties contained herein. To the extent consistent with applicable law, VPG disclaims any liability whatsoever for special, incidental or consequential damages resulting from the use or handling of this product.

LIMITATIONS OF LIABILITY: To the extent consistent with applicable law, the exclusive remedy of the user or buyer for any and all losses, injuries or damages resulting from the use or handling of this product, whether in contract, warranty, tort, negligence, strict liability or otherwise, shall not exceed the purchase price paid or at VPG election, the replacement of product.

32406-0618-TP



Manufactured By:



Valentia
Pharmaceutical
Group, Inc.

230 FM 87

BONHAM, TEXAS 75418

EPA Reg. No. 53883-395-7401

EPA Est. No. 7401-TX-01

Product Questions? 855-270-4776