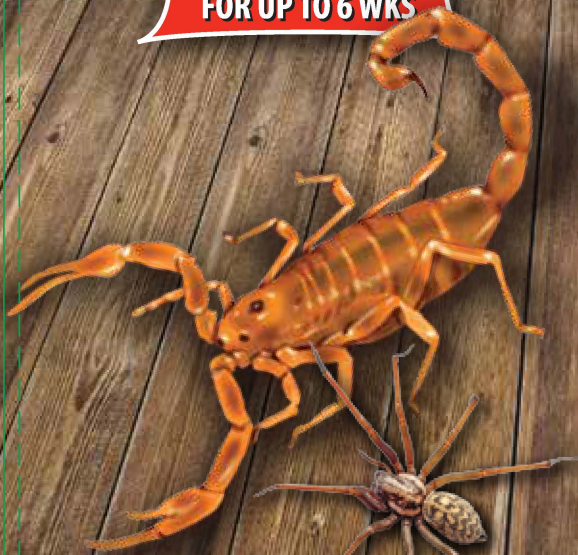


**HARRIS**

★ Since 1922 ★

# SCORPION & SPIDER KILLER

**KEEPS ON KILLING  
FOR UP TO 6 WKS****ACTIVE INGREDIENTS:**

Prallethrin [(R)-2-Methyl-4-oxo-3-(2-propynyl)cyclopent-2-enyl (1R)-cis, trans-chrysanthematate]	0.03%
Esfenvalerate [(S)-Cyano (3-phenoxyphehyl)methyl 4-chloro-alpha-(1-methylethyl) benzeneacetate]	0.05%
*N-Octyl bicycloheptene dicarboximide	0.29%
<b>OTHER INGREDIENTS:</b>	99.63%
<b>TOTAL:</b>	100.00%

\* MGK® 264, Insecticide Synergist

**KEEP OUT OF REACH OF CHILDREN  
CAUTION**

See back panel for First Aid and additional precautionary statements.

NET WT. 16 oz (453 g)

**FIRST AID****IF ON SKIN OR CLOTHING:** Take off contaminated clothing. Rinse skin immediately with plenty of water for 15 – 20 minutes. Call a poison control center or doctor for treatment advice.**IF IN EYES:** Hold eye open and rinse slowly and gently with water for 15 – 20 minutes. Remove contact lenses, if present, after the first 5 minutes. Then continue rinsing eye. Call a poison control center or doctor for treatment advice.**IF SWALLOWED:** Immediately call a poison control center or doctor. Do not induce vomiting unless told to do so by a poison control center or doctor. Do not give any liquid to the person. Do not give anything by mouth to an unconscious person.

Have the product container or label with you when calling a poison control center or doctor, or going for treatment. For information regarding medical emergencies or pesticide incidents, call 1-877-541-2016.

**PRECAUTIONARY STATEMENTS  
HAZARDS TO HUMANS AND DOMESTIC ANIMALS  
CAUTION**

Causes moderate eye irritation. Harmful if swallowed or absorbed through skin. Avoid contact with skin, eyes, or clothing. Wash thoroughly with soap and water after handling and before eating, drinking, chewing gum, or using tobacco. Remove and wash contaminated clothing before reuse. Prolonged or frequently repeated skin contact may cause allergic reaction in some individuals.

**ENVIRONMENTAL HAZARDS**

This pesticide is toxic to fish and aquatic invertebrates. Do not apply directly to or near water, or to areas where surface water is present, or to intertidal areas below the mean water mark. Do not apply when weather conditions favor drift from treated areas. Drift and run-off may be hazardous to fish in water adjacent to treated areas. Do not contaminate water when disposing of equipment washwaters. See Directions for Use for additional precautions and requirements.

**PHYSICAL OR CHEMICAL HAZARDS****Contents under pressure.** Do not use or store near heat or open flame. Do not puncture or incinerate container. Exposure to temperatures above 130°F may cause bursting. Do not apply this product in or on electrical equipment due to possibility of shock hazard.**DIRECTIONS FOR USE**

It is a violation of Federal Law to use this product in a manner inconsistent with its labeling.

Only For Use In and Around Residential Areas Such As Rooms, Apartments, Homes, Attics, Basements, Campers, Boats, Household Storage Areas, Garages, Pet Sleeping Areas, and Cabins.

**SHAKE WELL BEFORE USE****Use Information:** Use this spray as a spot or crack and crevice treatment to control Asian lady beetles, boxelder bugs, Brown Marmorated Stink Bugs (BMSB), cockroaches, fleas, silverfish, stink bugs, ticks, waterbugs, and other insects listed below. Apply this product only as a coarse spray or crack and crevice treatment to localized areas where pests are found or may occur. Spray surfaces until wet.**USE RESTRICTIONS**

- Apply this product only as specified on this label.
- Do not contaminate food or feedstuffs.
- This product is intended for indoor/limited outdoor residential use only.
- All residential outdoor applications must be limited to building surfaces and spot treatments on structures only. Broadcast surface applications are prohibited.
- Do not allow adults, children, or pets to enter the treated area until sprays have dried.
- Do not allow children or pets to contact treated surfaces until spray has dried.
- Do not apply this product in a way that will contact adults, children, or pets, either directly or through drift.
- Do not wet articles to the point of run-off or drip. Do not use treated article until spray has dried.
- Remove or cover exposed food and drinking water before application. Remove or cover dishes, utensils, food processing equipment, and food processing surfaces, or wash them before use.
- Do not water the treated area to the point of run-off. Do not make applications during rain.
- Application is prohibited directly into sewers or drains, or to any area like a gutter where drainage to sewers, storm drains, water bodies, or aquatic habitat can occur. Do not allow this product to enter any drain during or after application.
- Remove pets, birds, and cover fish aquariums before spraying.

**FOR SPOT TREATMENT:**

To Kill Ants, Asian Lady Bird Beetles, Banded Garden Spiders, Black Widow Spiders, Bold Jumping Spiders, Boxelder Bugs, Brown Marmorated Stink Bugs (BMSB), Bud Spiders, Burrowing Wolf Spiders, Carpet Beetles, Catface Spiders, Centipedes, Cigarette Beetles, Cobweb Weaver Spiders, Cockroaches, Common House Spiders, Confused Flour Beetles, Crickets, Cupboard Spiders, Daddy-Long-legs, European House Spiders, Funnel Web Spiders, Giant Wolf Spiders, Grass Spiders, Ground Spiders, Indian Meal Moths, Marbled Cellar Spiders, Parson Spiders, Rice Weevils, Sawtoothed Grain Beetles, Scorpions, Silverfish, Southern House Spiders, Sowbugs, Spiders, Woodlouse Spiders, Stink Bugs, and Yellow Sac Spiders: Spray areas where these insects are found or may hide, including dark corners of rooms and closets; cracks and crevices in walls; along baseboards and door and window frames; behind and beneath sinks, stoves, refrigerators and cabinets; and around garbage cans, plumbing, and other utility installations. Pests driven out of hiding places should be sprayed directly. For ants, spray ant trails and around doors and windows, and wherever else these pests may find entrance. For control of Black Carpet Beetles, spray along baseboards and edges of carpeting, under carpeting, rugs, and furniture and wherever these insects are seen or suspected.

**To Kill Brown Dog Ticks and Fleas:** Thoroughly apply as a spot treatment to infested areas such as pet beds and resting quarters, nearby cracks and crevices, along and behind baseboards, window and door frames, and localized areas of floor and floor coverings where these pests may be present. Pet's old bedding should be removed and replaced with clean, fresh bedding after treatment. **DO NOT SPRAY PETS WITH THIS PRODUCT.** Pets should be treated with a registered flea and tick control product prior to reentering treated areas.**FOR CRACK AND CREVICE TREATMENT:**

To Kill Ants, Asian Lady Beetles, Banded Garden Spiders, Black Widow Spiders, Bold Jumping Spiders, Boxelder Bugs, Brown Marmorated Stink Bugs (BMSB), Bud Spiders, Burrowing Wolf Spiders, Carpet Beetles, Catface Spiders, Cobweb Weaver Spiders, Cockroaches, Common House Spiders, Crickets, Cupboard Spiders, Daddy-Long-legs, European House Spiders, Fleas, Funnel Web Spiders, Giant Wolf Spiders, Grass Spiders, Ground Spiders, Marbled Cellar Spiders, Parson Spiders, Scorpions, Silverfish, Southern House Spiders, Sowbugs, Spiders, Woodlouse Spiders, Stink Bugs, and Yellow Sac Spiders: Apply spray in small amounts directly into cracks and crevices. Equipment capable of delivering a pin stream should be used in points between different interior elements of construction, between equipment and floors, openings leading to voids and hollow spaces in interior walls, equipment legs and bases where these insects hide.

Care should be taken to avoid depositing the product onto exposed surfaces or introducing the material into the air. Avoid contamination of food or food handling surfaces.

**Flies and Mosquitoes:** Use only outdoors as an aid in reducing annoyance from these insects. Apply as spot treatments to outside surfaces of window and door frames as well as other areas where these pests may enter the home. Also apply as spot treatments to dark corners and localized resting areas (such as under eaves) or porches, patios, and garages where these insects may congregate. Flies and mosquitoes coming to rest on treated surfaces will be killed.**STORAGE AND DISPOSAL**

Do not contaminate water, food, or feed by storage and disposal.

**Pesticide Storage:** Store in a cool, dry area. Always store pesticides in the original container. Store away from food and pet food.**Pesticide Disposal and Container Handling:** Do not puncture or incinerate!

Nonrefillable container. Do not reuse or refill this container.

If empty: Place in trash or offer for recycling if available.

If partly filled: Call your local solid waste agency for disposal instructions.

EPA Reg. No. 1021-1691-3

EPA Est. No. 33595-MO-4 (N) or

EPA Est. No. 11623-GA-2 (J) or

EPA Est. No. 7754-GA-1 (A) or

EPA Est. No. 58996-MO-1 (AF)

Letter in parenthesis at the end of the EPA Est. No. indicates manufacturing location and corresponds to the first letter in lot number on container.

Manufactured by:

**P.F. Harris Manufacturing Company, LLC**

P.O. Box 1922 • Cartersville, GA 30120

1-800-637-0317

ESL120111 REV110718

PRO DUCT CODE: SCORP-16A

